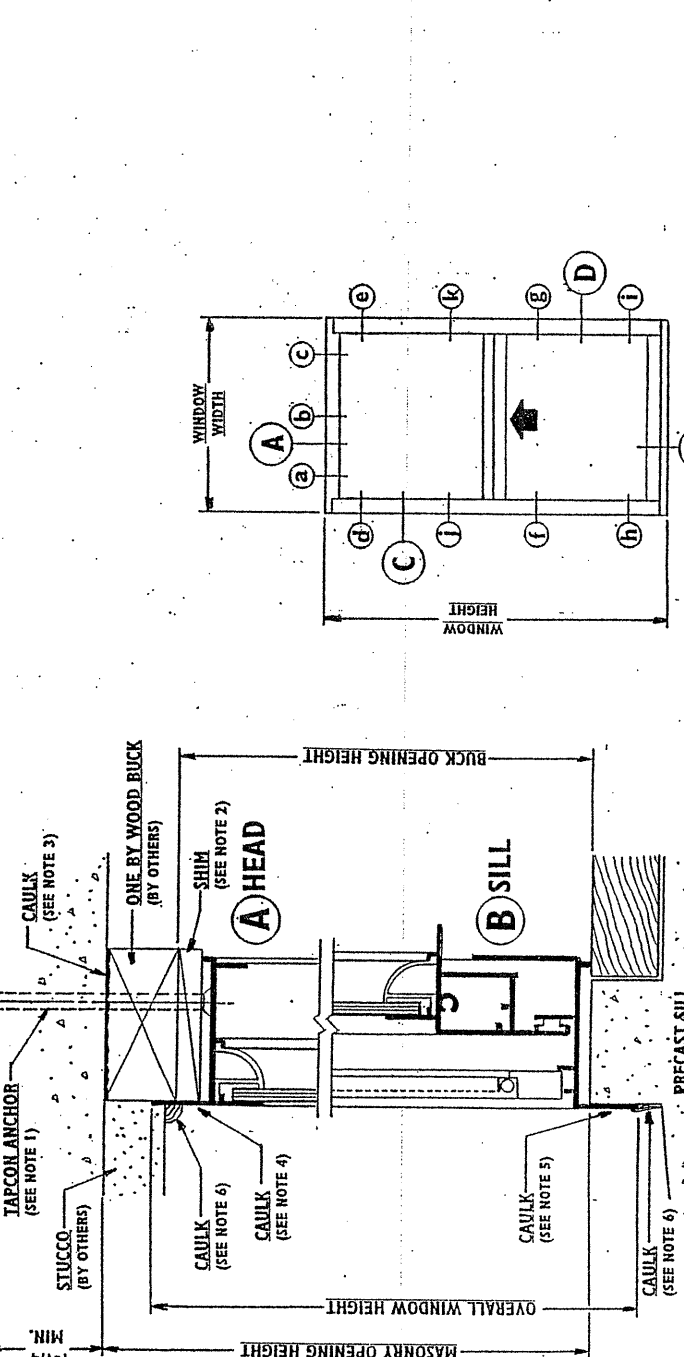
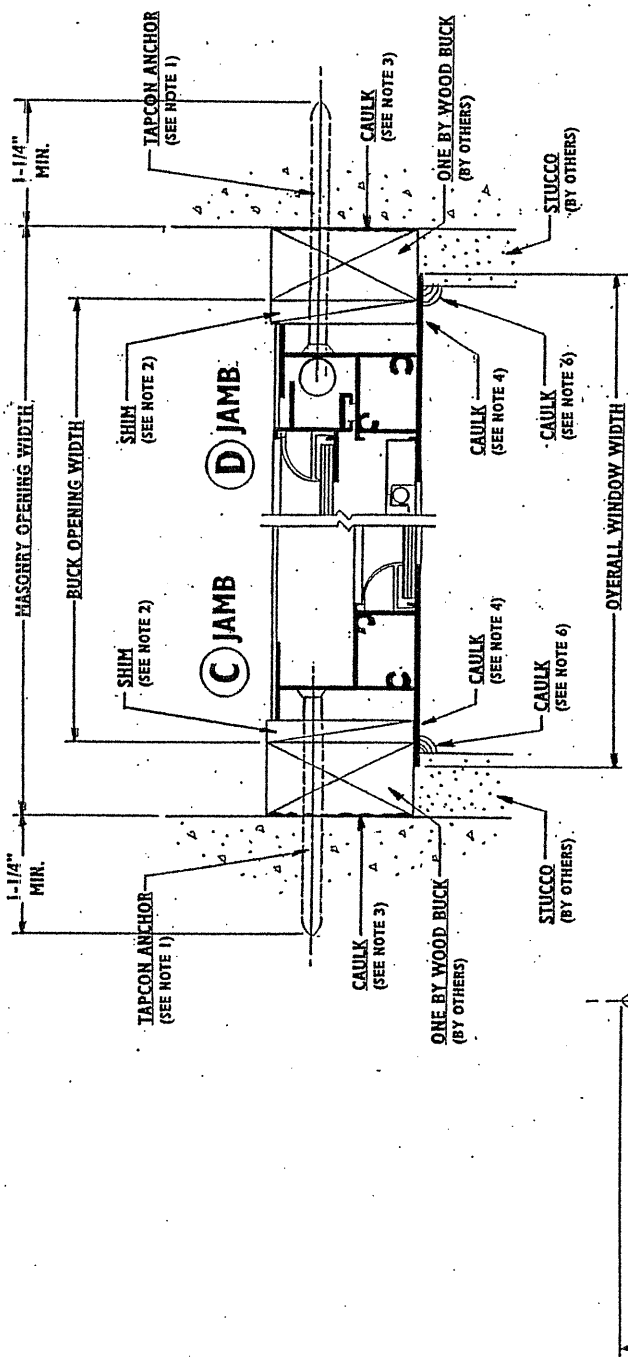


CALLOUT SIZE	TAPCON LOCATION CHART (SEE ELEVATION)			JAMBS
	OVERALL WINDOW SIZE	BUCK	HEAD	
12	19-1/8 x 26	18-1/8 x 25	30-40 PSF	41-70 PSF
13	19-1/8 x 38-3/8	18-1/8 x 37-3/8	b	b
14	19-1/8 x 50-5/8	18-1/8 x 49-5/8	b	b
15	19-1/8 x 63	18-1/8 x 62	b	b
16	19-1/8 x 76-3/4	18-1/8 x 75-3/4	b	b
17	26-1/2 x 26	25-1/2 x 25	b	b
17 3/32	26-1/2 x 38-3/8	25-1/2 x 37-3/8	b	b
17 3/16	26-1/2 x 50-5/8	25-1/2 x 49-5/8	b	b
17 1/8	26-1/2 x 63	25-1/2 x 62	b	b
17 1/4	26-1/2 x 76-3/4	25-1/2 x 75-3/4	b	b
28 3/4	32 x 28-7/16	31 x 27-7/16	b	b
28 3/8	32 x 36-7/16	31 x 35-7/16	b	b
28 3/4	32 x 40-7/16	31 x 39-7/16	b	b
28 4/8	32 x 48-7/16	31 x 47-7/16	b	b
28 5/8	32 x 60-7/16	31 x 59-7/16	b	b
22	37 x 26	36 x 25	b	b
23	37 x 38-3/8	36 x 37-3/8	b	b
24	37 x 50-5/8	36 x 49-5/8	b	b
25	37 x 63	36 x 62	b	b
26	37 x 76-3/4	36 x 75-3/4	b	b
27	37 x 84	36 x 83	b	b
34 3/8	40 x 36-7/16	39 x 35-7/16	b	b
34 3/8	40 x 40-7/16	39 x 39-7/16	b	b
34 3/8	40 x 44-7/16	39 x 43-7/16	b	b
34 3/8	40 x 48-7/16	39 x 47-7/16	b	b
34 3/8	40 x 60-7/16	39 x 59-7/16	b	b
40 3/8	48 x 36-7/16	47 x 35-7/16	b	b
40 3/8	48 x 40-7/16	47 x 39-7/16	b	b
40 3/8	48 x 44-7/16	47 x 43-7/16	b	b
40 3/8	48 x 48-7/16	47 x 47-7/16	b	b
40 3/8	48 x 60-7/16	47 x 59-7/16	b	b
40 3/8	48 x 72-7/16	47 x 71-7/16	b	b
32	53-1/8 x 26	52-1/8 x 25	b	b
33	53-1/8 x 38-3/8	52-1/8 x 37-3/8	b	b
34	53-1/8 x 50-5/8	52-1/8 x 49-5/8	b	b
35	53-1/8 x 63	52-1/8 x 62	b	b
36	53-1/8 x 76-3/4	52-1/8 x 75-3/4	b	b
37	53-1/8 x 84	52-1/8 x 83	b	b

NOTES:

1. INSTALL 3/16" DIA. TAPCON ANCHORS LOCATED AS PER CHART. TAPCON ANCHORS SHALL EMBED 1-1/4" MIN. INTO MASONRY.
2. SHIM AT TAPCON ANCHORS IF REQUIRED. SHIM NOT TO EXCEED 1/4" MAX. THICKNESS.
3. CAULK BETWEEN MASONRY AND WOOD BUCK WITH SILICONIZED ACRYLIC CAULKING OR APPROVED EQUIVALENT.
4. CAULK BEHIND HEAD AND JAMB FLANGES WITH SILICONIZED ACRYLIC CAULKING OR APPROVED EQUIVALENT.
5. CAULK BEHIND SILL FLANGE WITH VULKEM 116 ADHESIVE CAULKING OR APPROVED EQUIVALENT.
6. CAULK EXTERIOR PERIMETER OF HEAD, SILL AND JAMB FLANGES WITH SILICONIZED ACRYLIC CAULKING OR APPROVED EQUIVALENT.
7. USE NEXT SIZE LARGER FOR SIZES NOT LISTED ON CHART.
8. USE #8 SCREWS IN FACTORY SUPPLIED INSTALLATION HOLES WHICH ARE NOT DESIGNATED FOR TAPCON ANCHORS. THESE SCREWS SHALL EMBED 3/8" MIN. INTO WOOD BUCK.
9. ALL ANCHORS, SCREWS, SHIMS AND CAULKING BY OTHERS.
10. WINDOW FRAMING MATERIAL SHALL BE 6063-T5 ALUMINUM ALLOY.
11. GLASS THICKNESS SHALL MEET THE REQUIREMENTS OF ASTM E1300.
12. MILCO SERIES 1000 SINGLE HUNG WINDOW SHOWN. INSTRUCTIONS APPLY ALSO TO MILCO SERIES 5000 SINGLE HUNG WINDOW.



MILCO BUILDING PRODUCTS
Swainsboro, GA

APPROVED BY: _____
SCALE: NONE
DATE: 7/18/02

DRAWN BY: HMR
REVISED: _____

INSTALLATION INSTRUCTIONS
MILCO SERIES 1000 SINGLE HUNG WINDOW

DRAWING NUMBER: **M-1000**

ROBERT E. FISHER
WM. W. MEYERS, P.E.
Consulting Engineers
9301 N.E. 4th Ave., C-300
Miami Shores, FL 33158
(305) 768-0117 FAX (305) 768-5282

FLA. 18755
STRUCTURA
Date: 05/08/02