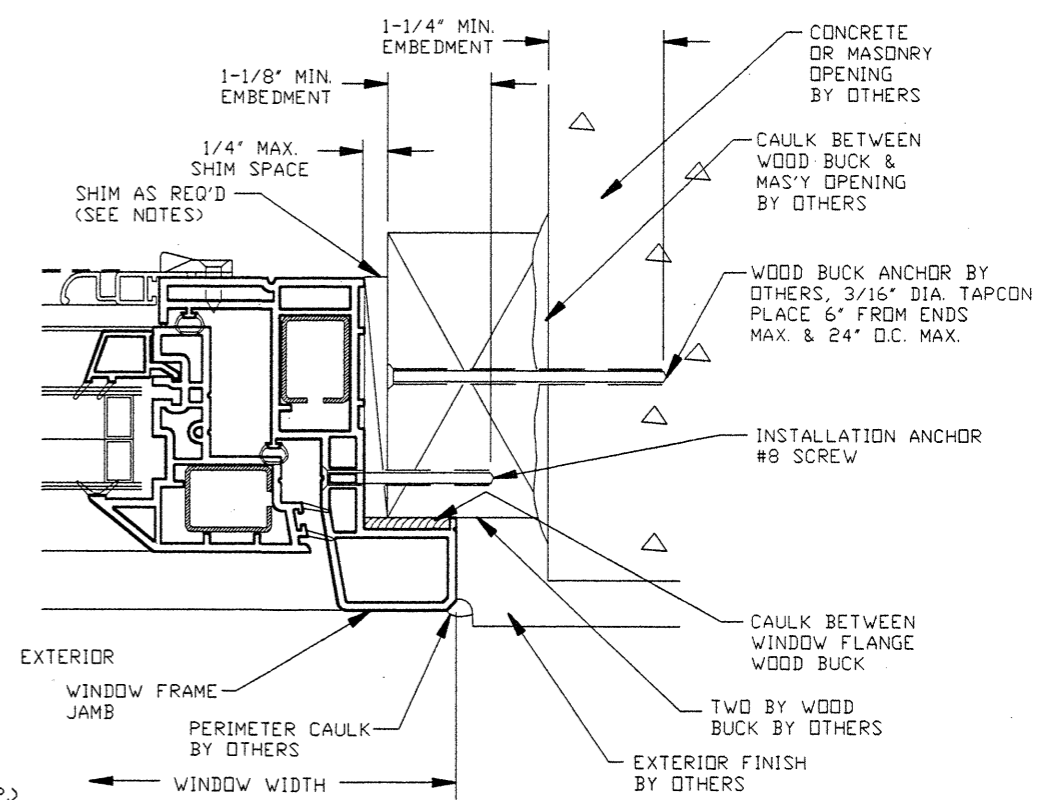
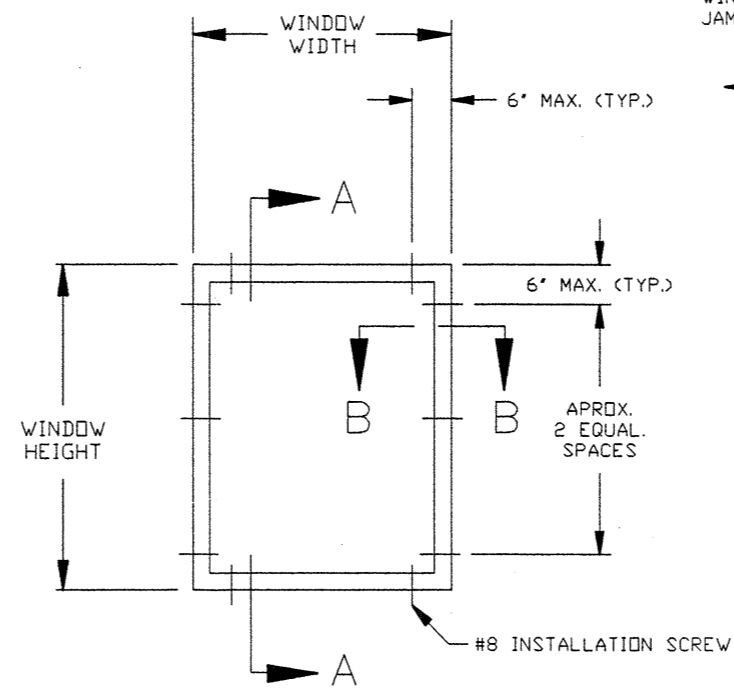


SECTION A-A



SECTION B-B



ELEVATION VIEWED FROM EXTERIOR

- NOTES:
- 1) SHIM AS REQ'D. AT EACH INSTALLATION ANCHOR W/ LOAD BEARING SHIM. MAX. ALLOWABLE SHIM STACK TO BE 1/4". USE SHIMS WHERE SPACE GREATER THAN 1/16" IS PRESENT.
 - 2) WINDOW FRAME MATERIAL: POLY VINYL CHLORIDE.
 - 3) 3/16" DIA. TAPCON FOR ATTACHMENT OF TWO BY BUCK, ANCHOR MUST BE OF SUFFICIENT LTH. TO ACHIEVE MIN. EMBEDMENT OF 1-1/4" INTO MASONRY OR CONCRETE IF APPLICABLE. TAPCONS MUST BE SPACED 6" FROM ENDS MAX. & 24" O.C. MAX.
 - 4) #8 INSTALLATION SCREWS FOR INSTALLATION OF WINDOW MUST BE OF SUFFICIENT LENGTH TO ACHIEVE MIN. EMBEDMENT OF 1-1/8" INTO TWO BY WOOD BUCK. LOCATE ANCHORS AS SHOWN ON ELEVATION.
 - 5) CAULK BEHIND WINDOW FLANGE WITH LATEX CAULK.
 - 6) USE LATEX CAULK FOR PERIMETER SEAL AROUND EXTERIOR OF WINDOW FLANGE BY OTHERS.
 - 7) GLASS THICKNESS MAY VARY PER THE REQUIREMENTS OF ASTM E1300 GLASS CHARTS. INSULATING GLASS IS SHOWN, SINGLE GLAZING ALSO QUALIFIED.
 - 8) INSTALLATION AS STATED HEREIN COMPLIES WITH THE FLORIDA BUILDING CODE. DESIGN PRESSURE CAPACITY OF WINDOW & INSTALLATION IS 40.0 PSF.

WINDOW PROS			
TITLE: CASEMENT WINDOW INSTALLATION IN MASONRY OR WOOD FRAM W/ 2 BY BUCK			
ENGINEER: MANUEL MARTINEZ	DRN: BB	DATE: 3/14/02	
DISCIPLINE: CIVIL	SCALE: N.T.S.	DWG. NO: RPLUS0011	
FL. REG. NO: 47182	REV. LETTER:	SHEET: 1 OF 2	

MM
03-2402