

SEE "FRAME CORNER DETAIL ON SHEET 3"

NO. 8 X 1 1/2" P.H. SMS WITHIN 2" OF THE CORNERS & 8" O.C. (TYP. ALL SIDES).

NAILING FIN & FRAME

8" X 8" X 2" THK. GLASS BLOCK (7 3/4" MAX. SQUARE ACTUAL SIZE)

CONTINUOUS ALUMINUM EXTRUDED SEPERATOR BETWEEN EA. BLOCK LAYER

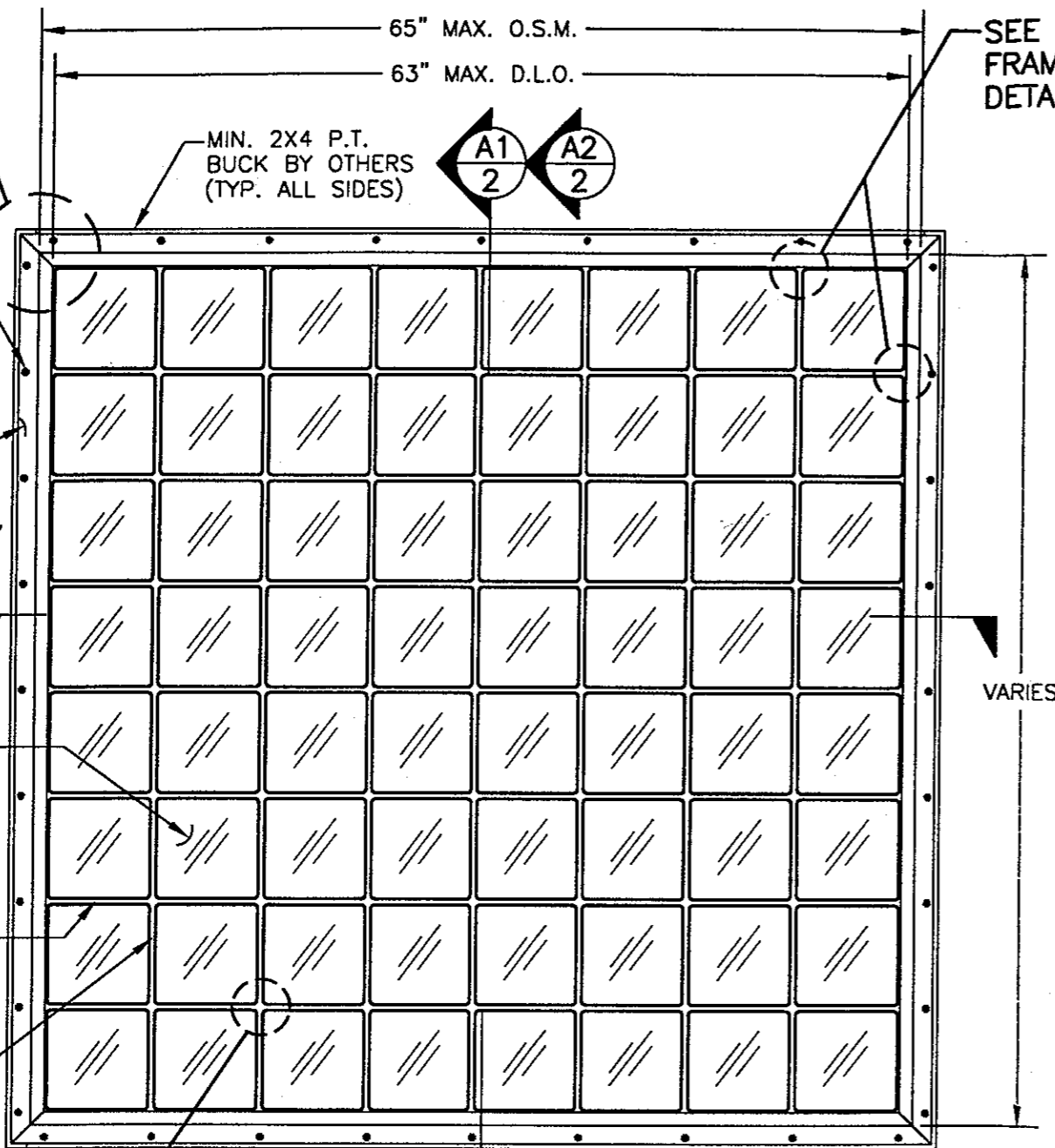
BROKEN ALUMINUM EXTRUDED SEPERATOR BETWEEN EA. BLOCK

NOTE: SEPERATORS DO NOT CONNECT. THE BROKEN SEPERATORS ONLY ACT TO SEPERATE THE BLOCK SECTIONS.

NOTE: THE DIMENSIONS SHOWN AS MAX. PERTAIN TO THE WINDOW DIMENSIONS IN THE SAME DIRECTION AS THE CONTINUOUS ALUMINUM SEPERATORS. THE OPPOSITE DIMENSIONS MAY VARY WITHIN LIMITATIONS AS SET FORTH IN THE LOAD TABLE ON SHEET 3. THE CONTINUOUS SEPERATORS MAY BE USED IN EITHER DIRECTION.

ALLOWABLE DESIGN LOADS

SEE LOAD TABLES ON SHEET 4



SEE "SEPERATOR TO FRAME CONNECTION DETAIL" ON SHT. 3

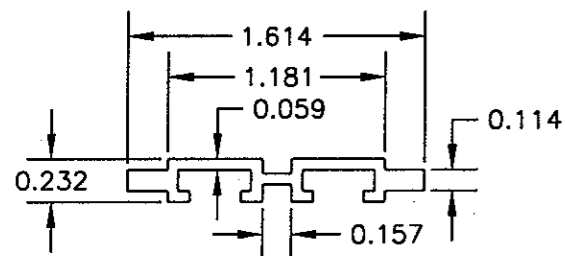
GENERAL NOTES

1. THIS GLASS BLOCK WINDOW SYSTEM HAS BEEN TESTED, ANALYZED AND APPROVED FOR DESIGN PRESSURES SHOWN ON THESE DRAWINGS.
2. BUCKING, OPENINGS & BUCKING FASTENERS MUST BE DESIGNED & INSTALLED TO WITHSTAND WIND LOADS AS DETERMINED FOR EA. APPLICATION
3. BUCKING FASTENERS MAY NOT EXCEED 16" O.C. SPACING AROUND OPENINGS REGARDLESS OF CIRCUMSTANCE.
4. ALL MATERIAL, HARDWARE & FASTENERS SHALL BE IN ACCORDANCE WITH THESE DRAWINGS & MAY NOT VARY UNLESS SPECIFICALLY MENTIONED ON THE DRAWINGS.
5. THE DETAILS & SPECIFICATIONS SHOWN HEREIN REPRESENT THE PRODUCTS PROPOSED FOR WATER INFILTRATION, AIR INFILTRATION, FORCED ENTRY & UNIFORM STATIC AIR PRESSURE TESTING IN CONFORMANCE WITH ASTM E330, ASTM E331, ASTM E283, ASTM F588 & AAMA 101-97 FOR NON-IMPACT FIXED WINDOWS.
6. THIS GLASS BLOCK WINDOW SYSTEM HAS BEEN ANALYZED & DESIGNED IN ACCORDANCE WITH AAMA & THE 2001 FLORIDA BUILDING CODE REQUIREMENTS.
7. THIS PRODUCT HAS BEEN TESTED IN ACCORDANCE WITH ALL APPLICABLE AAMA & ASTM STANDARDS FOR ALUMINUM FRAMED FIXED WINDOWS.

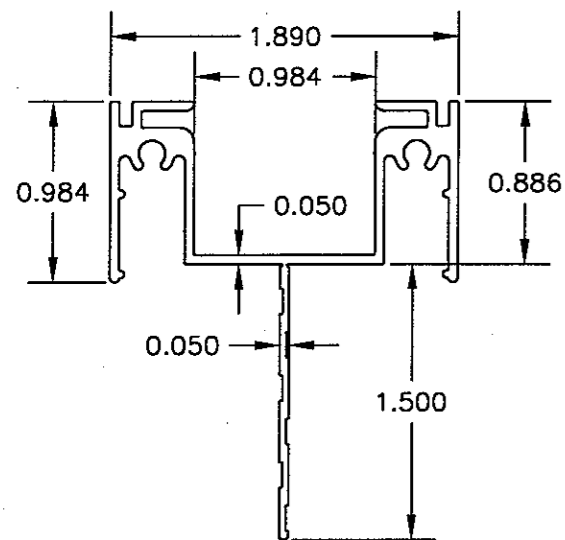
EXTERIOR ELEVATION

SCALE: 1"=1'-0"

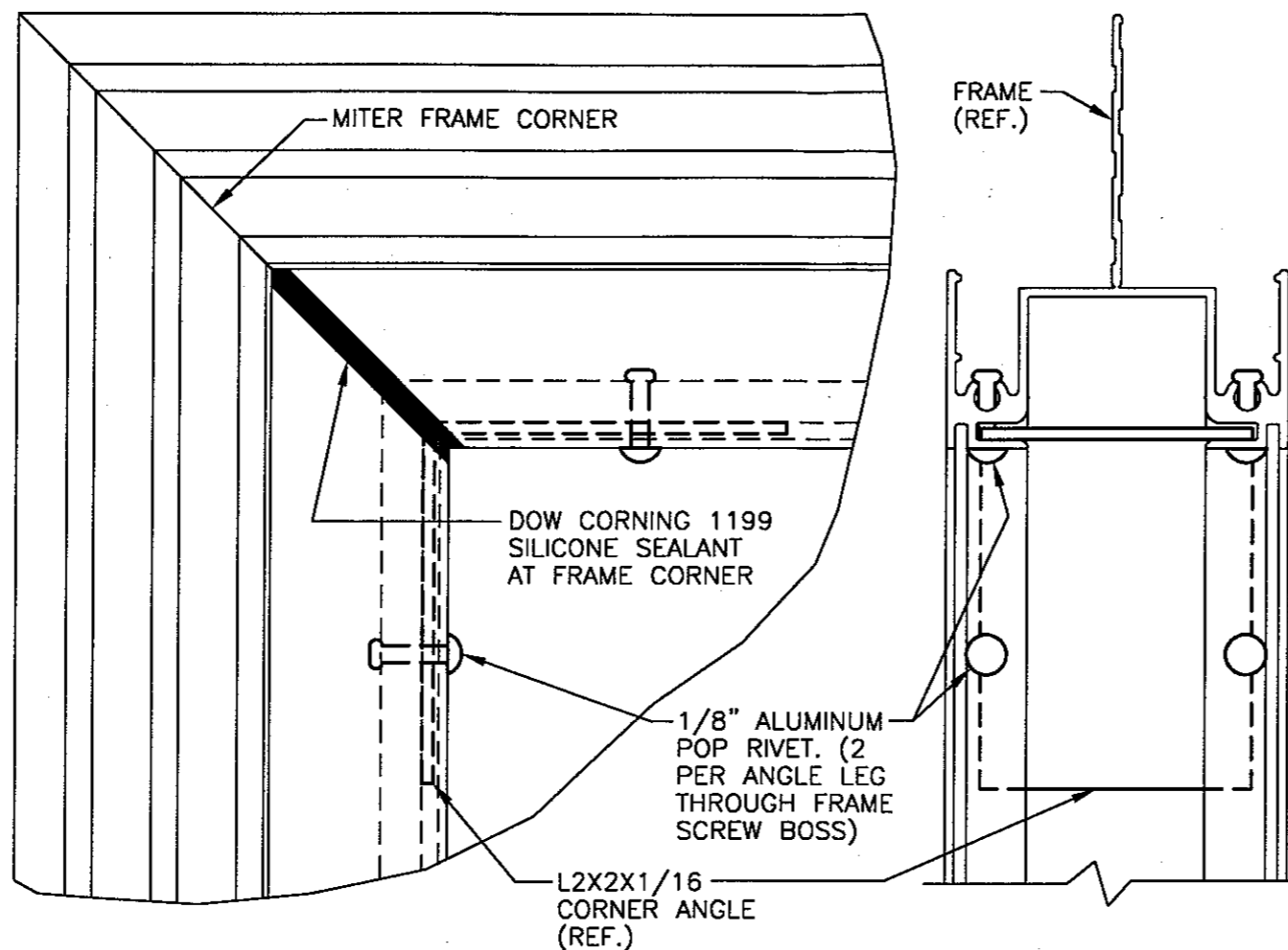
DRAWN BY: W.W.S.		CHECKED BY: W.W.S.	
PLOT: 1-12		DATE: 04/21/00	
DATE	BY	REVISION DESCRIPTION	NO.
DRAWING TITLE: NON-IMPACT GLASS BLOCK WINDOW IN ALUMINUM FRAME		MANUFACTURER: GMI GLASS MASONRY, INC.	
CONSULTANTS: W. W. SCHAEFER ENGINEERING & CONSULTING, P.A.		5000 OAKES ROAD, #F FT. LAUDERDALE, FLORIDA 33314 (954)584-8774	
600 SANDTREE DRIVE, SUITE 203B PALM BEACH GARDENS, FL 33403		PHONE: 561-775-4902 FAX: 561-775-4903	
CERTIFICATION: MAY 10 2000	WARREN W. SCHAEFER, P.E. P.E. NO. 44135		
DRAWING NO. 1006	REV.		
SHEET NO. 1 OF 4			



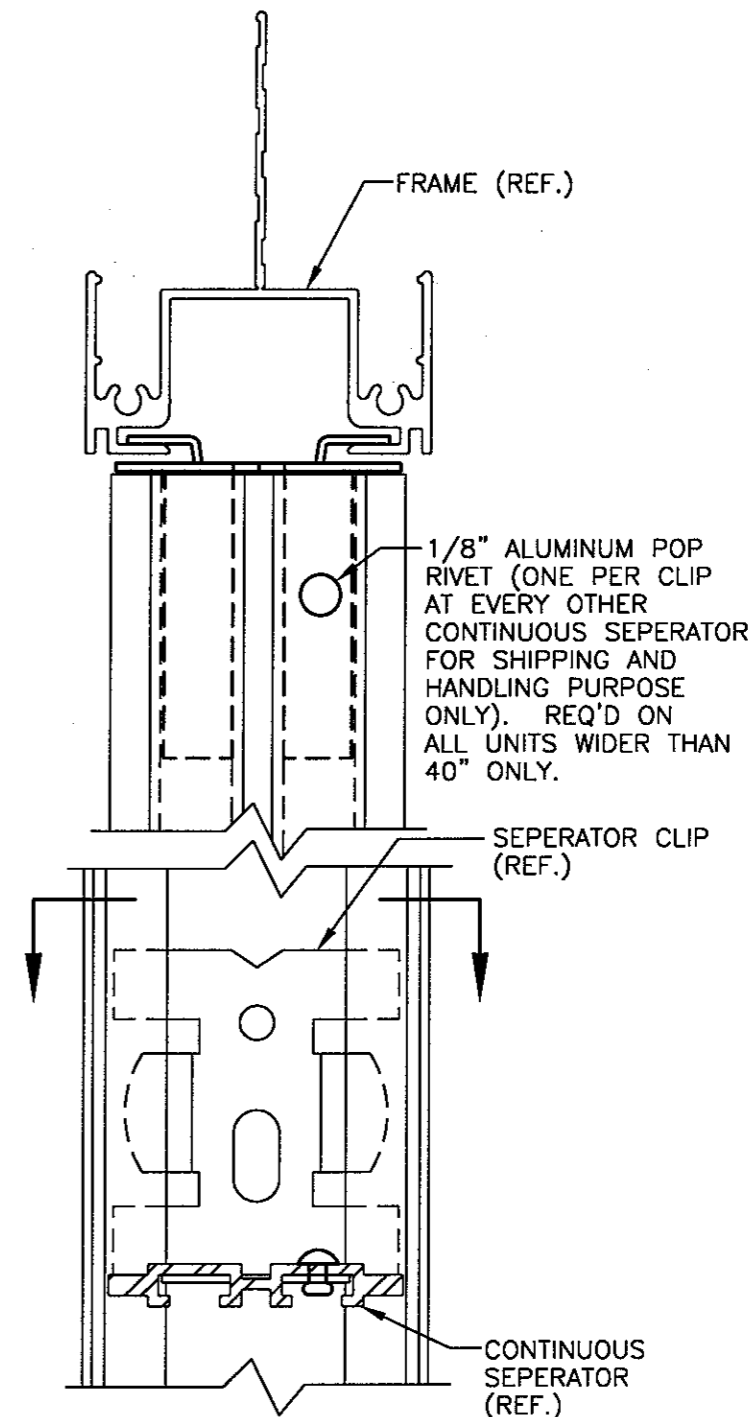
SEPERATOR
6063-T5 ALUMINUM
SCALE: FULL



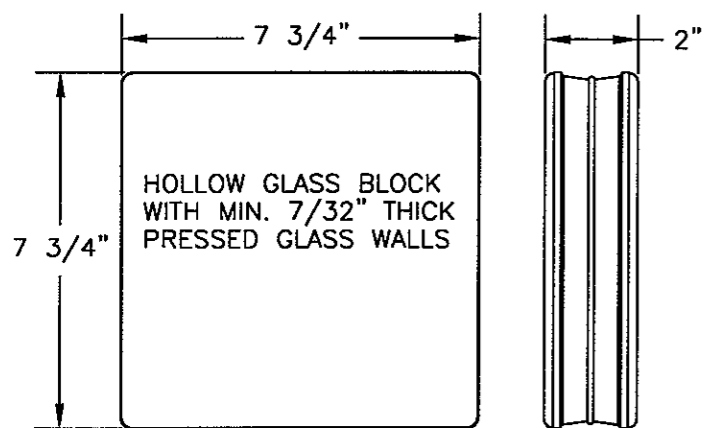
PERIMETER FRAME
6063-T5 ALUMINUM
SCALE: FULL



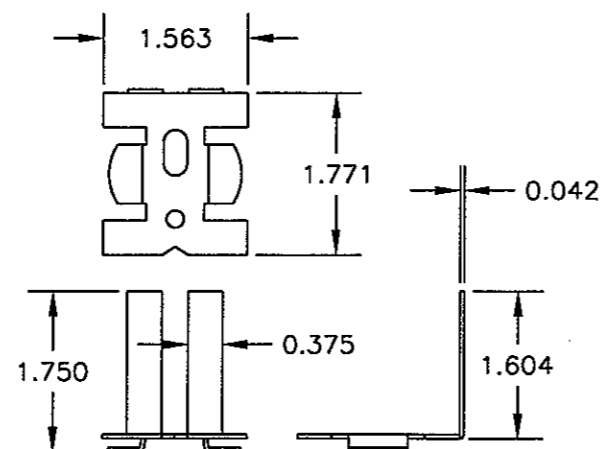
FRAME CORNER DETAIL
SCALE: FULL



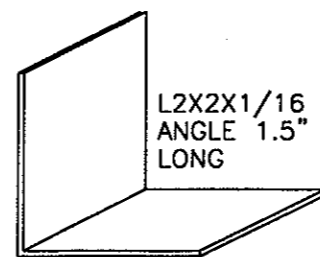
SEPERATOR TO FRAME CONNECTION DETAIL
SCALE: FULL



GLASS BLOCK
SCALE: N.T.S.
SURFACE TEXTURE VARIES
MANUFACTURED BY J. WECK CO.



SEPERATOR CLIP
ZINK PLATED STEEL
SCALE: N.T.S.



FRAME CORNER ANGLE
6063-T5 ALUMINUM
SCALE: 1/2 FULL

NO.	REVISION DESCRIPTION	BY	DATE

DRAWING TITLE: **NON-IMPACT GLASS BLOCK WINDOW IN ALUMINUM FRAME**

CONSULTANTS: **W. W. SCHAEFER ENGINEERING & CONSULTING, P.A.**
600 SANDTREE DRIVE, SUITE 203B
PALM BEACH GARDENS, FL 33403
PHONE: 561-775-4902 FAX: 561-775-4903

MANUFACTURER: **GMI GLASS MASONRY, INC.**
5000 OAKES ROAD, #F
FT. LAUDERDALE, FLORIDA 33314
(954)584-8774

CERTIFICATION: **MAY 10 2000**

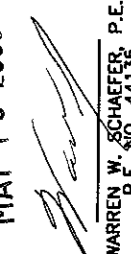
WARREN W. SCHAEFER, P.E.
P.E. NO. 44135

WIND LOAD TABLE

NOMINAL HEIGHT (IN.)	ALLOWABLE DESIGN PRESSURES (PSF)																																	
	8	16	24	32	40	48	56	64	72	80	88	96	104	112	120	128	136	144	152	160	168	176	184	192	200	208	216	224	232	240				
8	112.0	120.0	112.0	120.0	112.0	120.0	112.0	120.0	112.0	120.0	93.3	100.0	80.0	85.7	70	75																		
16	112.0	120.0	112.0	120.0	112.0	120.0	112.0	120.0	112.0	120.0	93.3	100.0	80.0	85.7	70	75																		
24	112.0	120.0	112.0	120.0	112.0	120.0	112.0	120.0	112.0	120.0	93.3	100.0	80.0	85.7	70	75																		
32	112.0	120.0	112.0	120.0	112.0	120.0	112.0	120.0	112.0	120.0	93.3	100.0	80.0	85.7	70	75																		
40	112.0	120.0	112.0	120.0	112.0	120.0	112.0	120.0	112.0	120.0	93.3	100.0	80.0	85.7	70	75																		
48	112.0	120.0	112.0	120.0	112.0	120.0	112.0	120.0	112.0	120.0	93.3	100.0	80.0	85.7	70	75																		
56	112.0	120.0	112.0	120.0	112.0	120.0	112.0	120.0	112.0	120.0	93.3	100.0	80.0	85.7	70	75																		
64	112.0	120.0	112.0	120.0	112.0	120.0	112.0	120.0	112.0	120.0	93.3	100.0	80.0	85.7	70	75																		
72	112.0	120.0	112.0	120.0	112.0	120.0	112.0	120.0	112.0	120.0	99.6	106.7	83.0	88.9	71.1	76.2	-	-																
80	112.0	120.0	112.0	120.0	112.0	120.0	112.0	120.0	112.0	120.0	89.6	96.0	74.7	80.0	-	-	-	-																
88	112.0	120.0	112.0	120.0	112.0	120.0	112.0	120.0	101.8	109.1	81.5	87.3	-	-	-	-	-	-																
96	112.0	120.0	112.0	120.0	112.0	120.0	112.0	120.0	93.3	100.0	74.7	80.0	-	-	-	-	-	-																
104	112.0	120.0	112.0	120.0	112.0	120.0	112.0	120.0	86.2	92.3	-	-	-	-	-	-	-	-																
112	112.0	120.0	112.0	120.0	112.0	120.0	112.0	120.0	106.7	114.3	80.0	85.7	-	-	-	-	-	-																
120	112.0	120.0	112.0	120.0	112.0	120.0	112.0	120.0	99.6	106.7	74.7	80.0	-	-	-	-	-	-																
128	112.0	120.0	112.0	120.0	112.0	120.0	112.0	120.0	93.3	100.0	70.0	75.0	-	-	-	-	-	-																
136	112.0	120.0	112.0	120.0	112.0	120.0	112.0	120.0	87.8	94.1	-	-	-	-	-	-	-	-																
144	112.0	120.0	112.0	120.0	112.0	120.0	112.0	120.0	83.0	88.9	-	-	-	-	-	-	-	-																
152	112.0	120.0	112.0	120.0	112.0	120.0	112.0	120.0	78.6	84.2	-	-	-	-	-	-	-	-																
160	112.0	120.0	112.0	120.0	112.0	120.0	112.0	120.0	74.7	80.0	-	-	-	-	-	-	-	-																
168	112.0	120.0	112.0	120.0	112.0	120.0	112.0	120.0	106.7	114.3	71.1	76.2	-	-	-	-	-	-																
176	112.0	120.0	112.0	120.0	112.0	120.0	112.0	120.0	101.8	109.1	-	-	-	-	-	-	-	-																
184	112.0	120.0	112.0	120.0	112.0	120.0	112.0	120.0	97.4	104.3	-	-	-	-	-	-	-	-																
192	112.0	120.0	112.0	120.0	112.0	120.0	112.0	120.0	93.3	100.0	-	-	-	-	-	-	-	-																
200	112.0	120.0	112.0	120.0	112.0	120.0	112.0	120.0	89.6	96.0	-	-	-	-	-	-	-	-																
208	112.0	120.0	112.0	120.0	112.0	120.0	112.0	120.0	86.2	92.3	-	-	-	-	-	-	-	-																
216	112.0	120.0	112.0	120.0	112.0	120.0	112.0	120.0	83.0	88.9	-	-	-	-	-	-	-	-																
224	112.0	120.0	112.0	120.0	112.0	120.0	112.0	120.0	80.0	85.7	-	-	-	-	-	-	-	-																
232	112.0	120.0	112.0	120.0	112.0	120.0	112.0	120.0	77.2	82.8	-	-	-	-	-	-	-	-																
240	112.0	120.0	112.0	120.0	112.0	120.0	112.0	120.0	74.7	80.0	-	-	-	-	-	-	-	-																
	POS	NEG	POS	NEG	POS	NEG	POS	NEG	POS	NEG	POS	NEG	POS	NEG	POS	NEG	POS	NEG	POS	NEG	POS	NEG	POS	NEG	POS	NEG	POS	NEG	POS	NEG	POS	NEG		
NOMINAL WIDTH (IN.)	8		16		24		32		40		48		56		64																			

TABLE NOTES:

1. POS = POSITIVE PRESSURE
2. NEG = NEGATIVE PRESSURE
3. WIDTH IS IN THE DIRECTION OF THE CONTINUOUS SEPERATORS.
4. "NOMINAL WIDTH & HEIGHT" IS PER NOMINAL 8" BLOCK SIZE.
5. PRESSURES MAY NOT EXCEED +112/-120 PSF REGARDLESS OF SIZE.

DRAWN BY: W.W.S.	CHECKED BY: W.W.S.
PLOT: 1=1	DATE: 04/21/00
NO.	DATE
BY	
REVISION DESCRIPTION	
DRAWING TITLE	NON-IMPACT GLASS BLOCK WINDOW IN ALUMINUM FRAME
CONSULTANTS	W. W. SCHAEFER ENGINEERING & CONSULTING, P.A. 600 SANDTREE DRIVE, SUITE 203B PALM BEACH GARDENS, FL 33403 PHONE: 561-775-4902 FAX: 561-775-4903
MANUFACTURER	GMI GLASS MASONRY, INC. 5000 OAKES ROAD, #F FT. LAUDERDALE, FLORIDA 33314 (954)584-8774
CERTIFICATION	MAY 10 2000  WARREN W. SCHAEFER, P.E. P.E. NO. 44135
DRAWING NO.	REV.
1006	
SHEET NO.	
4	OF 4