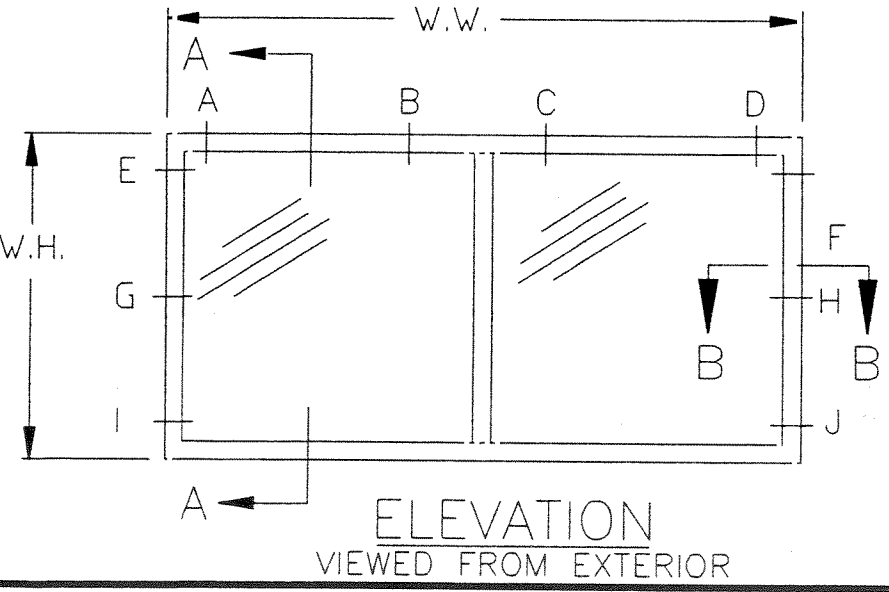


- NOTES:**
- 1) SHIM AS REQ'D. AT EACH INSTALLATION ANCHOR. MAX. ALLOWABLE SHIM STACK TO BE 1/4".
 - 2) WINDOW FRAME MATERIAL: ALUMINUM ALLOY 6063.
 - 3) INSTALLATION ANCHOR MUST BE OF SUFFICIENT LTH. TO ACHIEVE MIN. EMBEDMENT OF 1-1/4" INTO MASONRY OR CONCRETE.
 - 4) USE SILICONIZED ACRYLIC CAULK BEHIND WINDOW FLANGE AT HEAD & JAMBS. SILL MUST BE ATTACHED TO THE SUBSTRATE WITH VULKEM 116 ADHESIVE CAULK OR APPROVED EQUAL.
 - 5) USE SILICONIZED ACRYLIC CAULK FOR PERIMETER SEAL AROUND EXTERIOR OF WINDOW FLANGE.
 - 6) IF EXACT WINDOW SIZE IS NOT LISTED IN ANCHOR CHART, USE ANCHOR QUANTITY LISTED WITH NEXT LARGER SIZE, FOR THE APPROPRIATE DESIGN PRESSURE REQ'D.
 - 7) GLASS THICKNESS MAY VARY PER THE REQUIREMENTS OF ASTM E1300 GLASS CHARTS.
 - 8) LETTER DESIGNATIONS ON THE TAPCON LOCATION CHART INDICATE WHERE TAPCON ANCHORS ARE TO BE INSTALLED WHEN USING THE EXTERIOR ELEVATION AS A KEY.
 - 9) ALL FACTORY APPLIED HOLES NOT DESIGNATED FOR TAPCON ANCHOR SHOULD BE FILLED WITH #8 SCREWS OF SUFFICIENT LTH. TO PROVIDE MIN. 5/8 IN. EMBEDMENT INTO WOOD BUCK.
 - 10) APPLICATION OF VULKEM 116 ADHESIVE CAULK AT FRAME SILL MUST COMPLY WITH SEALANT MANUFACTURER'S RECOMMENDATIONS.
 - 11) ONE ADDITIONAL FIELD DRILLED & INSTALLED ANCHOR IS REQ'D. IN EACH JAMB ON THE FOLLOWING SIZES: "D25" (73 x 62), "D26" (73 x 71), "56M60M" (65 x 71), & "60M60M" (71 x 71). PLACE ANCHOR BETWEEN ANCHORS "G AND I" AND BETWEEN ANCHORS "H AND J" OVER 55 PSF ONLY.
 - 12) WHERE WINDOW IS INSTALLED IN MASONRY OPENING WITH A STRUCTURAL TWO BY WOOD BUCK, USE #10 SCREWS OF SUFFICIENT LENGTH TO ACHIEVE 1-3/8" MIN. EMBEDMENT AT ALL INSTALLATION FASTENER LOCATIONS. ON SIZES NOTED IN NOTE #11 ADD A #10 SCREW ANCHOR TO EACH JAMB FOR NOTED DESIGN PRESSURES.



TAPCON LOCATION CHART

CALL SIZE	TIP TO TIP	LOCATIONS IN HEAD			LOCATIONS IN JAMB		
		30PSF TO 35PSF	36PSF TO 55PSF	56PSF TO 70PSF	30PSF TO 35PSF	36PSF TO 55PSF	56PSF TO 70PSF
1H2	26 1/2 X 26	C	C	C	G,H	G,H	G,H
1H3	26 1/2 X 38 3/8	C	C	C	G,H	G,H	G,H
1H4	26 1/2 X 50 5/8	C	C	C	G,H	G,H	G,H,I,J
1H45	26 1/2 X 56 1/4	C	C	C	G,H	G,H	G,H,I,J
1H5	26 1/2 X 63	C	C	C	G,H	G,H,I,J	G,H,I,J
1H6	26 1/2 X 72	C	C	C	G,H	G,H,I,J	G,H,I,J
22	37 X 26	C	C	C	G,H	G,H	G,H
23	37 X 38 3/8	C	C	C	G,H	G,H	G,H
24	37 X 50 5/8	C	C	C	G,H	G,H,I,J	G,H,I,J
245	37 X 56 1/4	C	C	C	G,H	G,H,I,J	G,H,I,J
25	37 X 63	C	C	C	G,H	G,H,I,J	G,H,I,J
26	37 X 72	C	C	C	G,H,I,J	G,H,I,J	E,F,G,H,I,J
32	53 1/8 X 26	C	C	B,C	G,H	G,H	G,H
33	53 1/8 X 38 3/8	C	B,C	B,C	G,H	G,H	G,H,I,J
34	53 1/8 X 50 5/8	C	B,C	B,C	G,H	G,H,I,J	G,H,I,J
345	53 1/8 X 56 1/4	C	B,C	B,C	G,H,I,J	G,H,I,J	E,F,G,H,I,J
35	53 1/8 X 63	C	B,C	B,C	G,H,I,J	G,H,I,J	E,F,G,H,I,J
36	53 1/8 X 72	C	B,C	B,C	G,H,I,J	E,F,G,H,I,J	E,F,G,H,I,J
D22	74 X 26	C	B,C	B,C	G,H	G,H	G,H
D23	74 X 38 3/8	B,C	B,C	A,B,C,D	G,H	G,H,I,J	G,H,I,J
D24	74 X 50 5/8	B,C	B,C	A,B,C,D	G,H,I,J	G,H,I,J	E,F,G,H,I,J
D245	74 X 56 1/4	B,C	B,C	A,B,C,D	G,H,I,J	E,F,G,H,I,J	E,F,G,H,I,J
D25	74 X 63	B,C	B,C	A,B,C,D	G,H,I,J	E,F,G,H,I,J	E,F,G,H,I,J*
D26	74 X 72	B,C	B,C	A,B,C,D	G,H,I,J	E,F,G,H,I,J	E,F,G,H,I,J*
20M20M	24 X 24	C	C	C	G,H	G,H	G,H
20M30M	24 X 36	C	C	C	G,H	G,H	G,H
20M40M	24 X 48	C	C	C	G,H	G,H	G,H
20M46M	24 X 54	C	C	C	G,H	G,H	G,H,I,J
20M50M	24 X 60	C	C	C	G,H	G,H	G,H,I,J
20M60M	24 X 72	C	C	C	G,H	G,H,I,J	G,H,I,J
30M20M	36 X 24	C	C	C	G,H	G,H	G,H
30M30M	36 X 36	C	C	C	G,H	G,H	G,H
30M40M	36 X 48	C	C	C	G,H	G,H,I,J	G,H,I,J
30M46M	36 X 54	C	C	C	G,H	G,H,I,J	G,H,I,J
30M50M	36 X 60	C	C	C	G,H	G,H,I,J	G,H,I,J
30M60M	36 X 72	C	C	C	G,H,I,J	G,H,I,J	E,F,G,H,I,J
40M20M	48 X 24	C	C	B,C	G,H	G,H	G,H
40M30M	48 X 36	C	C	B,C	G,H	G,H	G,H,I,J
40M40M	48 X 48	C	C	B,C	G,H	G,H,I,J	G,H,I,J
40M46M	48 X 54	C	C	B,C	G,H	G,H,I,J	G,H,I,J
40M50M	48 X 60	C	C	B,C	G,H,I,J	G,H,I,J	E,F,G,H,I,J
40M60M	48 X 72	C	C	B,C	G,H,I,J	E,F,G,H,I,J	E,F,G,H,I,J
46M20M	54 X 24	C	C	B,C	G,H	G,H	G,H
46M30M	54 X 36	C	B,C	B,C	G,H	G,H	G,H,I,J
46M40M	54 X 48	C	B,C	B,C	G,H	G,H,I,J	G,H,I,J
46M46M	54 X 54	C	B,C	B,C	G,H,I,J	G,H,I,J	E,F,G,H,I,J
46M50M	54 X 60	C	B,C	B,C	G,H,I,J	G,H,I,J	E,F,G,H,I,J
46M60M	54 X 72	C	B,C	B,C	G,H,I,J	E,F,G,H,I,J	E,F,G,H,I,J
50M20M	60 X 24	C	B,C	B,C	G,H	G,H	G,H
50M30M	60 X 36	C	B,C	B,C	G,H	G,H	G,H,I,J
50M40M	60 X 48	C	B,C	B,C	G,H	G,H,I,J	G,H,I,J
50M46M	60 X 54	C	B,C	B,C	G,H,I,J	G,H,I,J	E,F,G,H,I,J
50M50M	60 X 60	C	B,C	B,C	G,H,I,J	G,H,I,J	E,F,G,H,I,J
50M60M	60 X 72	C	B,C	B,C	G,H,I,J	E,F,G,H,I,J	E,F,G,H,I,J
56M20M	66 X 24	C	B,C	B,C	G,H	G,H	G,H
56M30M	66 X 36	B,C	B,C	A,B,C,D	G,H	G,H	G,H,I,J
56M40M	66 X 48	B,C	B,C	A,B,C,D	G,H	G,H,I,J	G,H,I,J
56M46M	66 X 54	B,C	B,C	A,B,C,D	G,H,I,J	G,H,I,J	E,F,G,H,I,J
56M50M	66 X 60	B,C	B,C	A,B,C,D	G,H,I,J	E,F,G,H,I,J	E,F,G,H,I,J
56M60M	66 X 72	B,C	B,C	A,B,C,D	G,H,I,J	E,F,G,H,I,J	E,F,G,H,I,J*
60M20M	72 X 24	C	B,C	B,C	G,H	G,H	G,H
60M30M	72 X 36	B,C	B,C	A,B,C,D	G,H	G,H	G,H,I,J
60M40M	72 X 48	B,C	B,C	A,B,C,D	G,H	G,H,I,J	G,H,I,J
60M46M	72 X 54	B,C	B,C	A,B,C,D	G,H,I,J	G,H,I,J	E,F,G,H,I,J
60M50M	72 X 60	B,C	B,C	A,B,C,D	G,H,I,J	E,F,G,H,I,J	E,F,G,H,I,J
60M60M	72 X 72	B,C	B,C	A,B,C,D	G,H,I,J	E,F,G,H,I,J	E,F,G,H,I,J*

*ADDITIONAL ANCHORS REQ'D. SEE NOTE 11

[Handwritten Signature]
FEB 21 2002

FLORIDA EXTRUDERS INTERNATIONAL, INC
SANFORD, FLORIDA

TITLE: INSTALLATION DETAIL W/ TAPCONS
HORZ. SLIDING FLANGE WINDOW - SERIES 1000

DRAWN BY: BB APPROVED BY:
DATE: 10/23/01 SCALE: NTS DWG.: FLEX0020