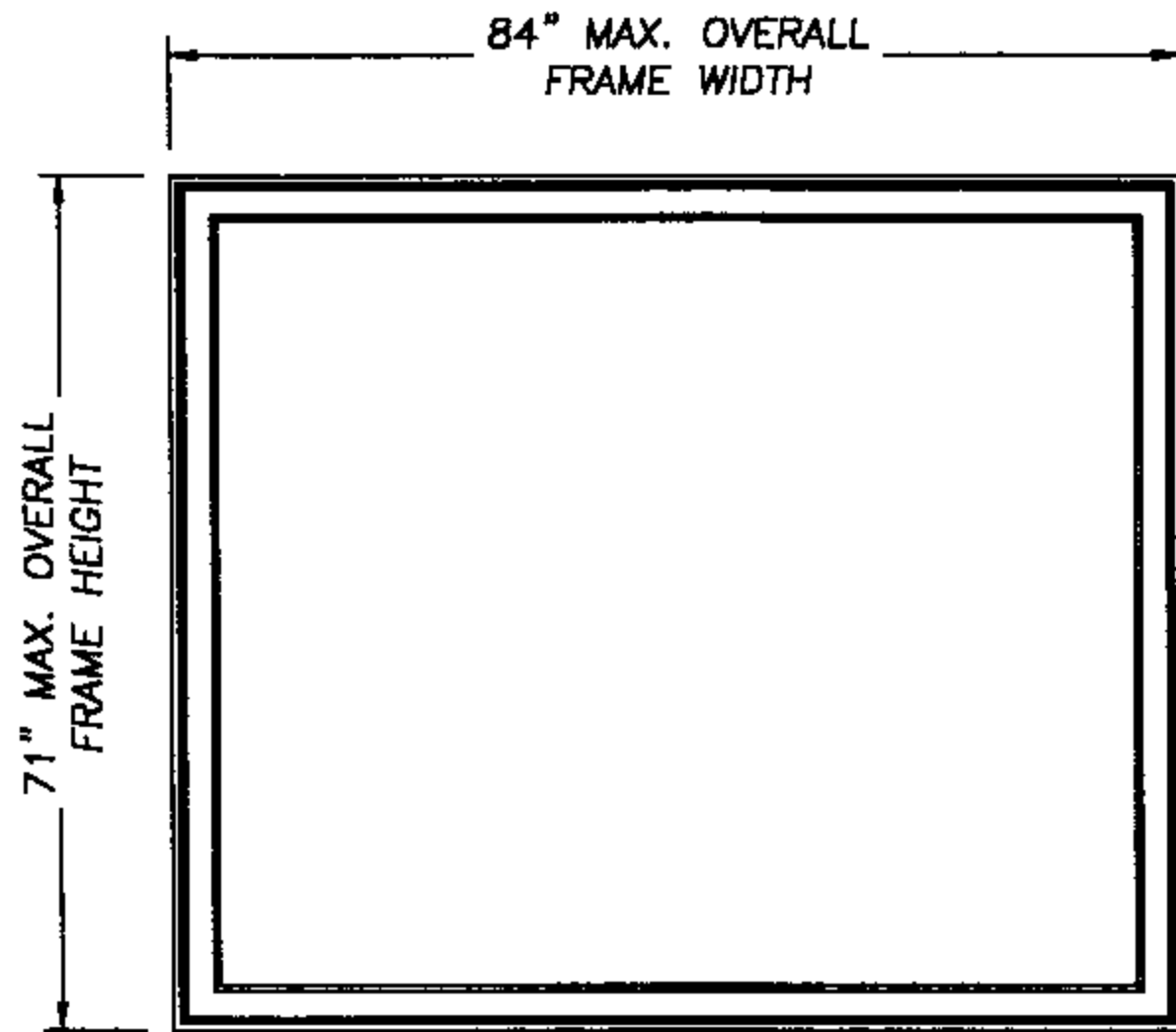


GREAT LAKES WINDOW

UNIFRAME SERIES
EXTRUDED VINYL PICTURE WINDOW



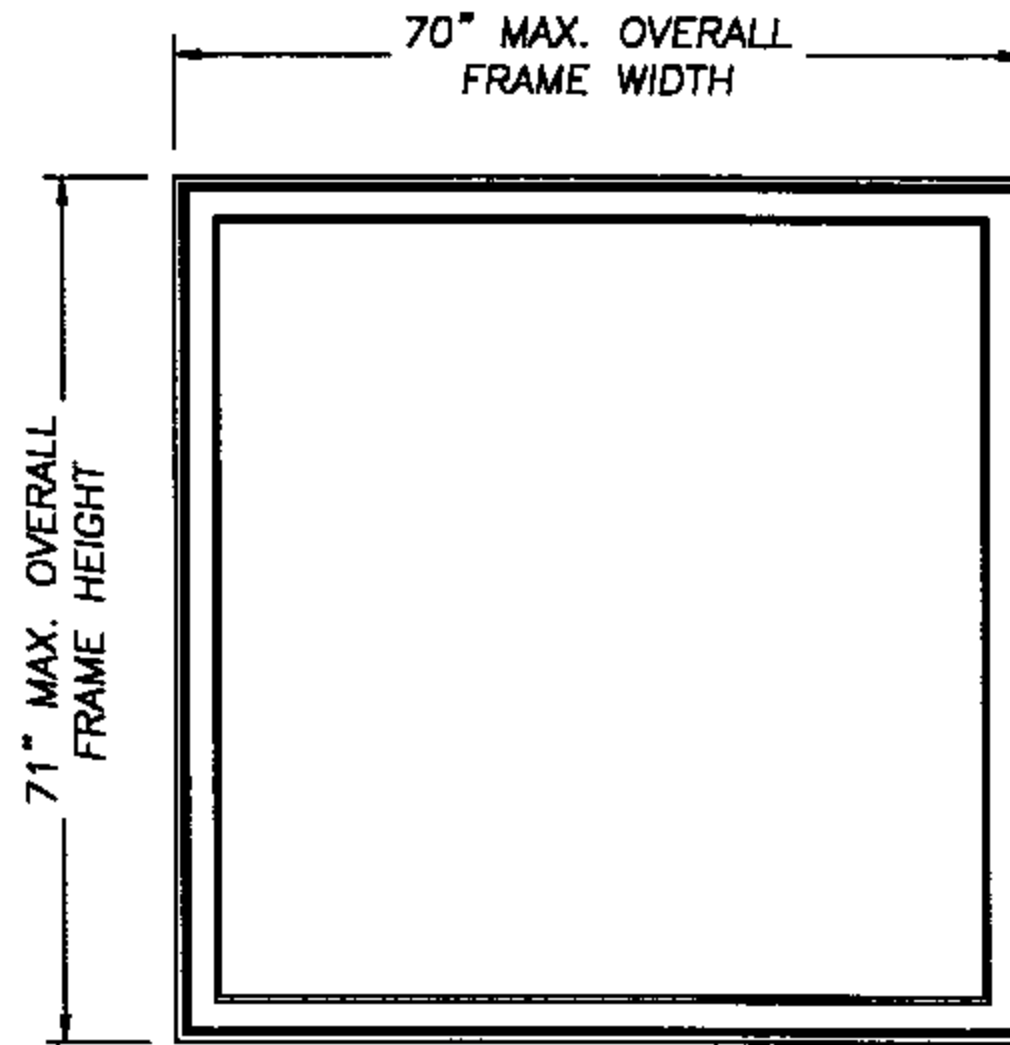
0

DESIGN PRESSURE RATING
POS. 55.0 NEG. 55.0

GLASS TABLE
7/8" INSULATED GLASS
3/16" TEMP. - AIR - 3/16" TEMP.

GENERAL NOTES

1. THIS PRODUCT IS DESIGNED TO COMPLY WITH THE FLORIDA BUILDING CODE.
2. PRODUCT ANCHORS SHALL BE AS LISTED AND SPACED AS SHOWN ON DETAILS.
3. WHEN THIS PRODUCT IS USED IN AN AREA REQUIRING WINDBORNE DEBRIS PROTECTION, FLORIDA BUILDING CODE APPROVED IMPACT RESISTANT SHUTTERS ARE REQUIRED.
4. MASONRY ANCHORING FOR 1x BUCK SEE SHEET 2 OF 3.
5. MASONRY ANCHORING FOR 2x BUCK SEE SHEET 3 OF 3.



0

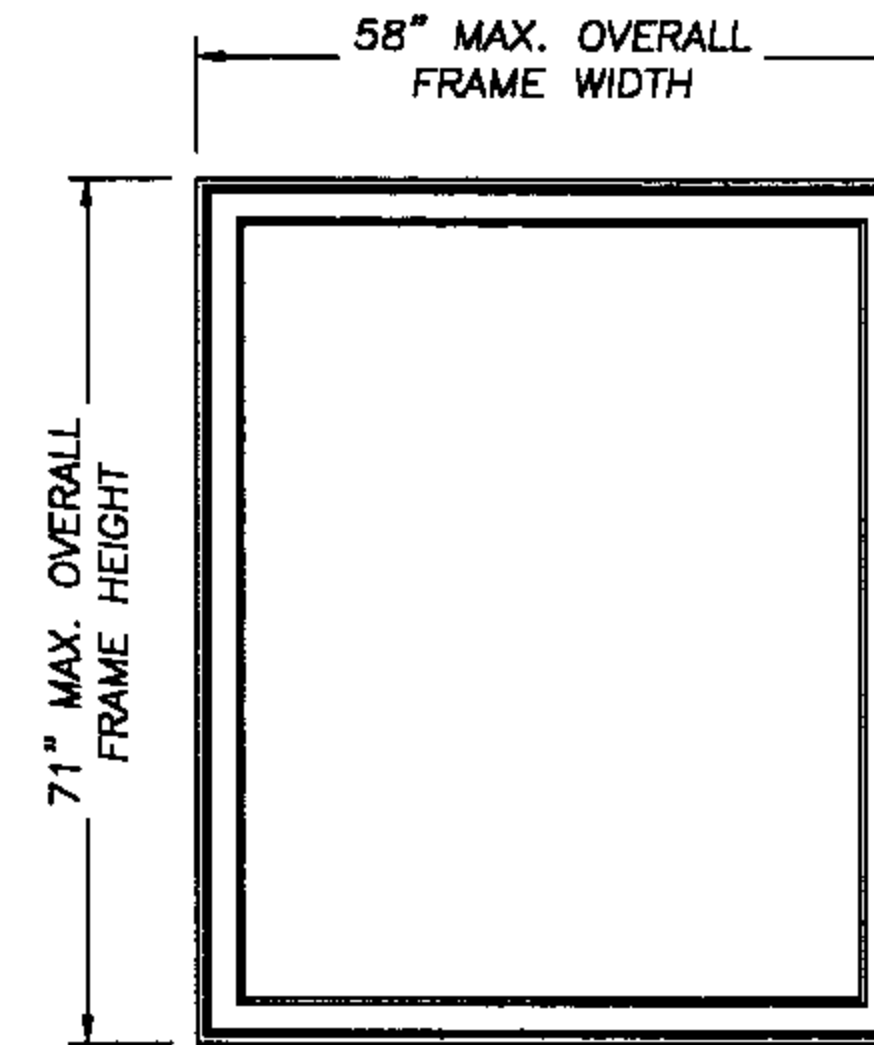
DESIGN PRESSURE RATING
POS. 65.0 NEG. 65.0

(ACHIEVED BY COMPARISON ANALYSIS)

GLASS TABLE
7/8" INSULATED GLASS
3/16" TEMP. - AIR - 3/16" TEMP.

PRODUCT DESCRIPTION

1. VINYL PICTURE WINDOW WITH MITERED AND WELDED CORNERS.
2. THE HEAD AND SIDE JAMBS ARE EXTRUDED VINYL WITH AN EXTERIOR WALL THICKNESS OF 0.070" +/- 0.008".



0

DESIGN PRESSURE RATING
POS. 53.0 NEG. 53.0

(ACHIEVED BY COMPARISON ANALYSIS)

GLASS TABLE
7/8" INSULATED GLASS
3/16" ANN. - AIR - 3/16" ANN.

Great Lakes Window
3049 Tracy Road
PO Box 1896
Toledo, Ohio 43603-1896
PH. 419.662.3505

PRODUCT: GREAT LAKES
EXTRUDED VINYL
PICTURE WINDOW
PART OR ASSEMBLY:
GENERAL NOTES &
TYPICAL ELEVATIONS

NO.	DATE	BY	REVISIONS

RW BUILDING
CONSULTANTS, INC.
813.659.9197

DATE: 6/19/02

SCALE: N.T.S.

DWG. BY: WLN

CHK. BY: RW

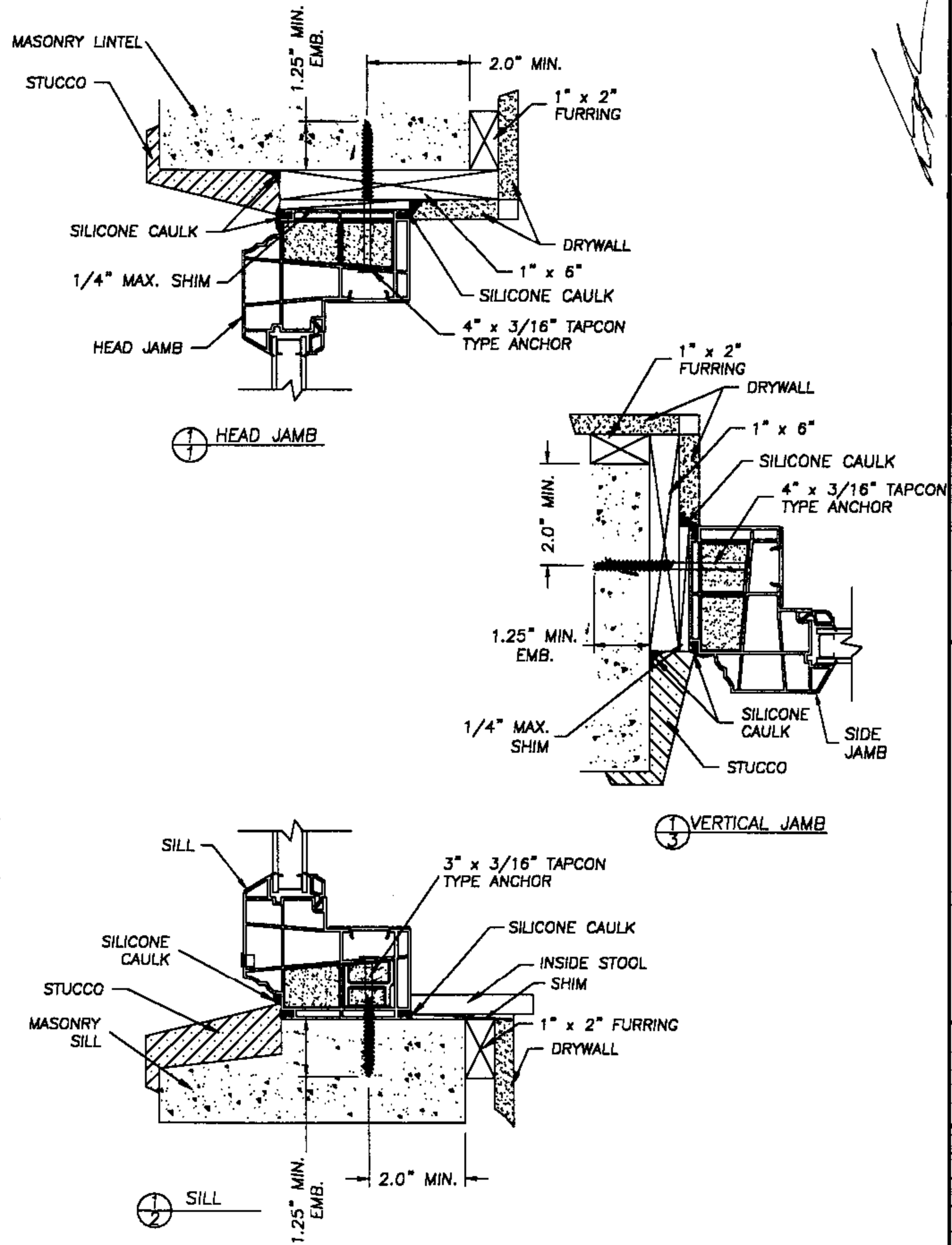
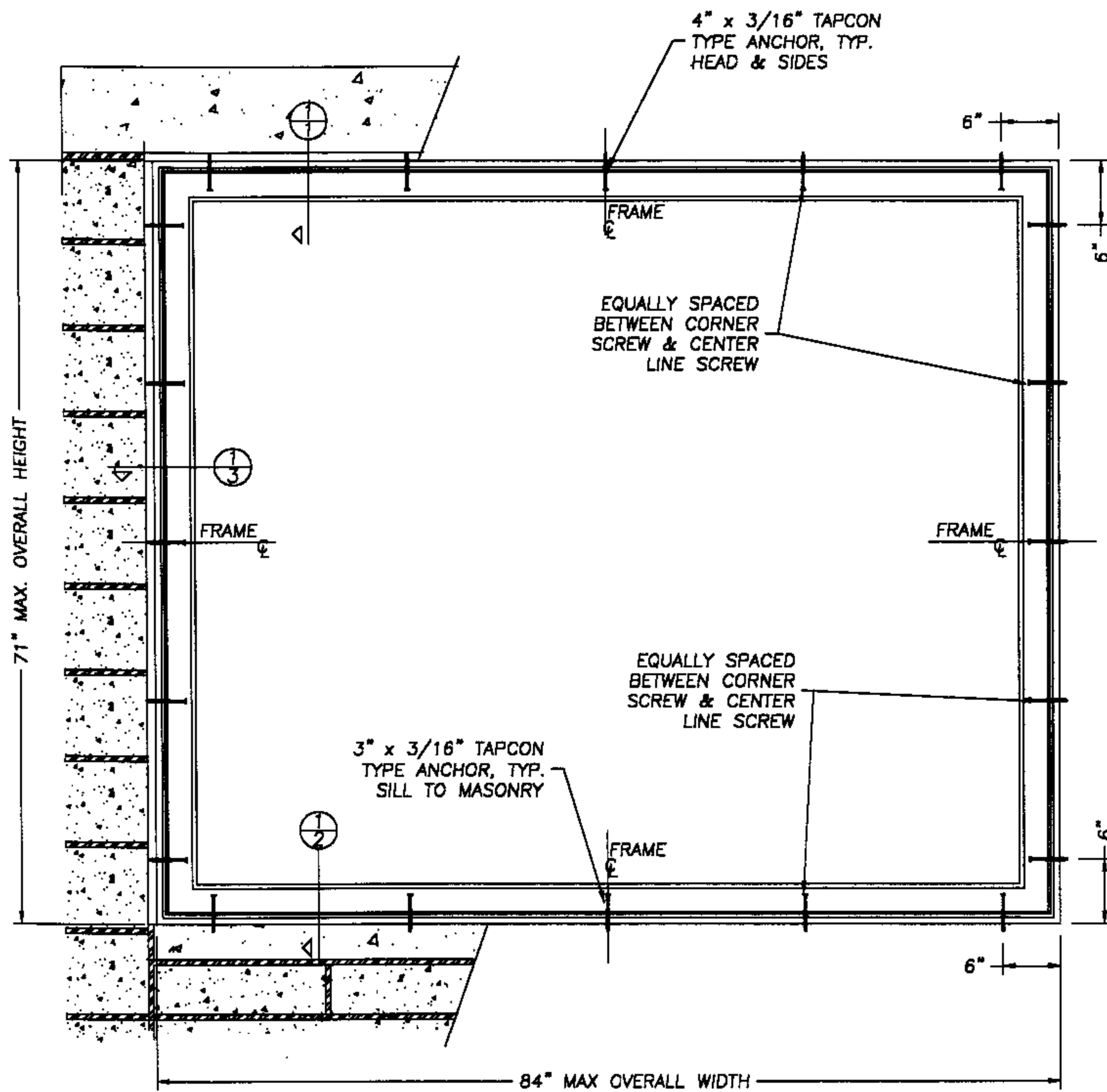
DRAWING NO.:

GL-101-OC

SHEET 1 OF 3

JULY 16, 2002

Lyndon F. Schmidt
Florida P. E. No. 43409
19506 French Lace Drive Lutz, FL 33558



NOTE:

Adjust Tapcon anchor locations, if necessary, to maintain a minimum 2.0" clearance from mortar joints.

JULY 16, 2002
Lyndon F. Schmidt
Florida P. E. No. 43409
19506 French Lace Drive
Lutz, FL 33558

Great Lakes Window
30499 Tracy Road
PO Box 4896
Toledo, Ohio 43603-1896
PH. 419.662.3505

ANCHORING CROSS SECTIONS
FOR 1X BUCK TO MASONRY
FIXED
PICTURE WINDOW

RW BUILDING
CONSULTANTS, INC.
813.659.9197

DATE: 6/19/02

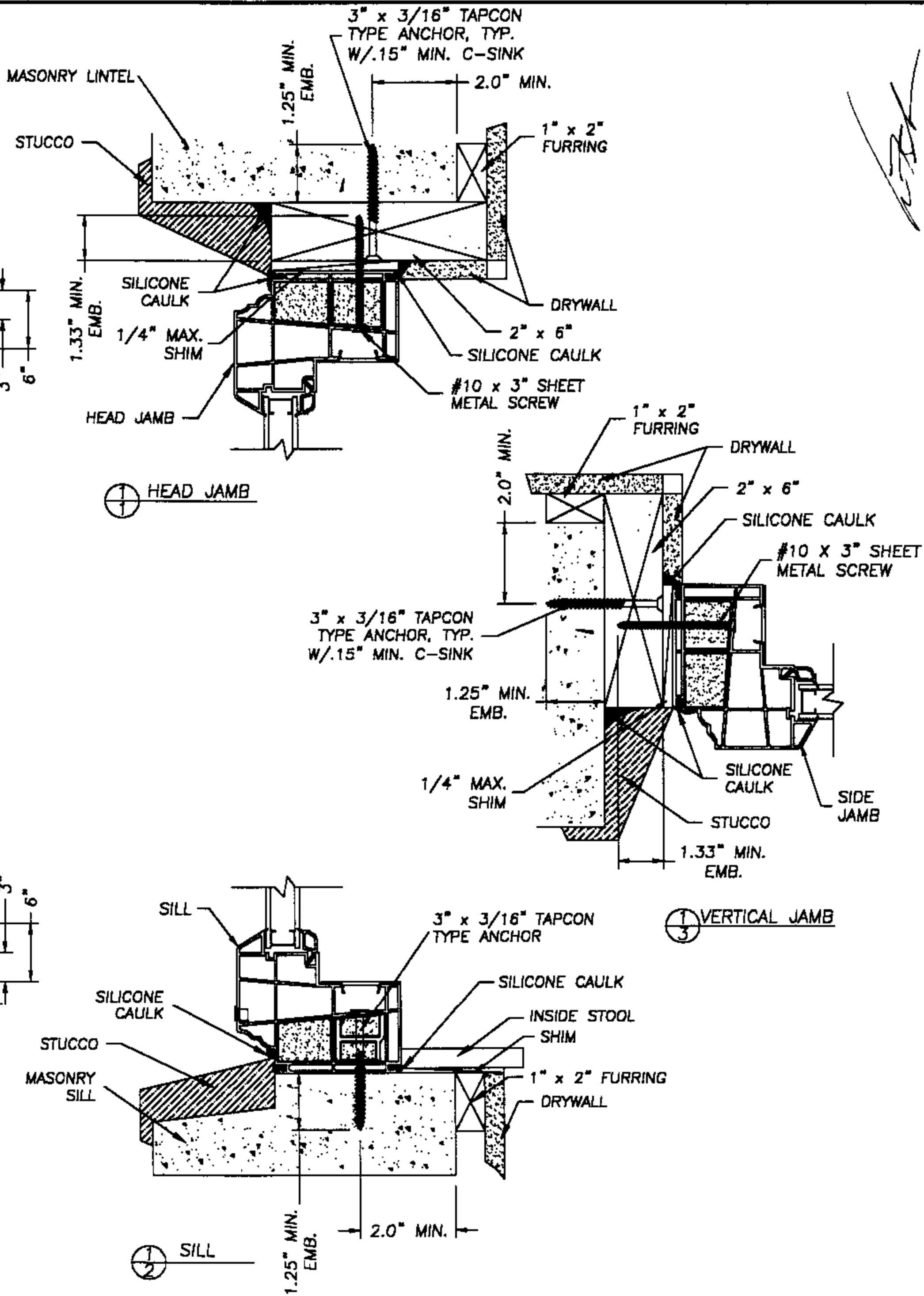
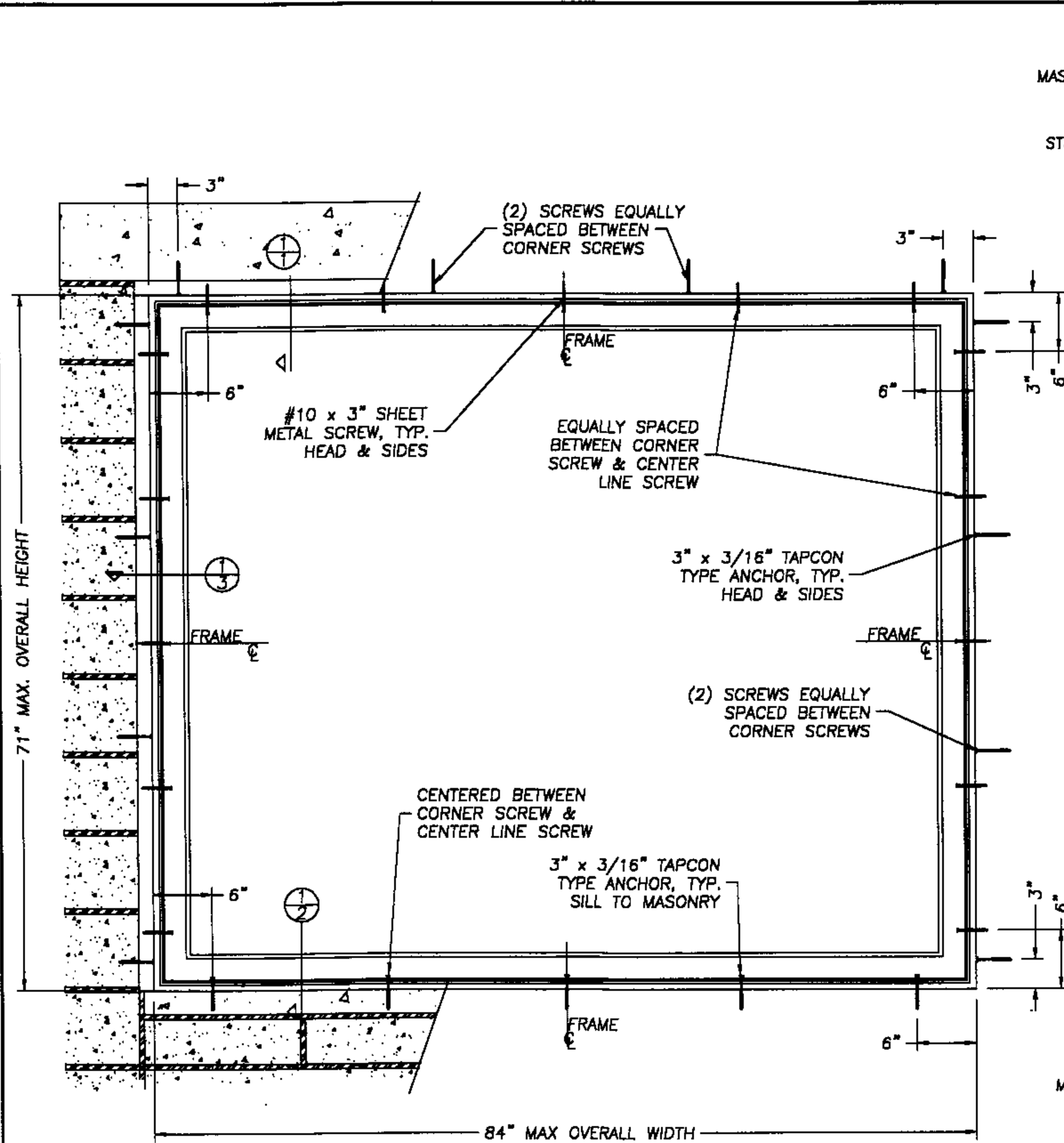
SCALE: N.T.S.

DWG. BY: WLN

CHK. BY: R.W.

DRAWING NO.:
GL-101-OC

SHEET 2 OF 3



NOTE:
Adjust Tapcon anchor locations, if necessary, to maintain a minimum 2.0" clearance from mortar joints.

JULY 16, 2002
Lyndon F. Schmidt
Florida P. E. No. 43409
19506 French Lace Drive
Lutz, FL 33558

Great Lakes Window
30499 Tracy Road
PO Box 4896
Toledo, Ohio 43603-1896
PH. 419.662.3505

ANCHORING CROSS SECTIONS
FOR 2X BUCK TO MASONRY
FIXED
PICTURE WINDOW

RW BUILDING CONSULTANTS, INC.
813.659.9197

6/19/02
SCALE: N.T.S.
DWG. BY: WLN
CHK. BY: R.W.
DRAWING NO.: GL-101-OC
SHEET 3 OF 3