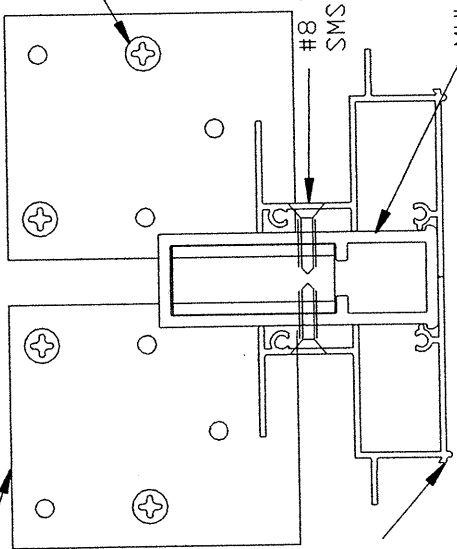


DWG NO: KJAX0059

MULLION ANCHOR BRACKET



SECTION A-A

INSTALLATION ANCHOR (TYP.)

#8 SELF TAPPING SMS (TYP.)

MULLION ANCHOR BRACKET

MULLION DIE NO. KCD-248

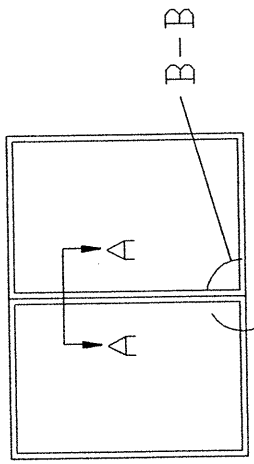
SUBSTRATE

MULLION DIE NO. KCD-248

INSTALLATION ANCHOR (TYP.)

SEE NOTES #2 & #3

DETAIL B-B



EXTERIOR ELEVATION

- NOTES:
- 1) MULLION INSTALLATION DETAILS APPLY TO ALUMINUM TUBE MULLION, DIE NO. KCD-248, WHEN USED TO MULL MARK 40 / 50 SINGLE HUNG WINDOWS SIDE BY SIDE.
 - 2) IN MASONRY CONSTRUCTION, ATTACH MULLION TO SUBSTRATE WITH FOUR (4) 3/16" DIA. CONCRETE SCREW ANCHORS OF SUFFICIENT LTH. TO ACHIEVE 1-1/4" MIN. EMBEDMENT INTO CONCRETE OR MASONRY.
 - 3) IN WOOD FRAME CONSTRUCTION, ATTACH MULLION TO SUBSTRATE USING FOUR (4) #10 SCREWS OF SUFFICIENT LTH. TO ACHIEVE 1-3/8" MIN. EMBEDMENT INTO WOOD FRAMING.
 - 4) MULLION AND ATTACHMENT ARE IN COMPLIANCE WITH THE REQUIREMENTS OF THE FLORIDA BUILDING CODE AT THE DESIGN PRESSURES SHOWN ON CHART ON BACK OF THIS SHT.

Handwritten initials and date:
HLL
03/24/02

KINCO, LTD.
JACKSONVILLE, FLORIDA

TITLE: INSTALLATION DETAILS FLANGE MARK 40 / 50 SERIES VERTICAL MULLION		DATE: 3/24/02
AREA: -----	DRN: JS	APRD: -----
VT/FT: -----	SCALE: HALF	MATL: -----
		DWG NO: KJAX0059

KINCO, LTD.

ALUMINUM MULLION, DIE #KCO-248

MARK 40 / 50 SERIES FLANGE SINGLE HUNG WINDOW

COMPARATIVE CHART IN DESIGN PRESSURE - PSF

WDW. WTH. > WDW. HGT. V	19.000	26.375	36.875	53.000
26.000	469	435	435	435
38.375	268	221	200	199
50.625	188	149	124	115
63.000	144	112	89	76
72.000	124	95	74	61
76.750	110	84	65	53
84.000	83	63	48	38
96.000	55	41	31	24

CHART APPLIES ONLY TO MULLION KCO-248 WHEN USED TO MULL MARK 40 / 50 SERIES FLANGE SINGLE HUNG WINDOWS.

READ WINDOW WIDTH AND HEIGHT IN INCHES

DESIGN PRESSURE VALUES ON THIS CHART ARE IN PSF

WINDOW WIDTHS AND HEIGHTS LISTED ABOVE ARE SINGLE WINDOW SIZES

DESIGN PRESSURE VALUES APPLY TO MULLION WHERE TWO OR MORE WINDOWS ARE INSTALLED IN A SINGLE OPENING.

ATTACH MULLION TO SUBSTRATE AS FOLLOWS:

CONCRETE OR MASONRY SUBSTRATE - ATTACH EACH END OF MULLION TO STRUCTURE USING FOUR 3/16 IN. DIA. TAPCON TYPE ANCHORS OF SUFFICIENT LENGTH TO ACHIEVE 1-1/4 IN. MIN. EMBEDMENT.

WOOD FRAME SUBSTRATE - ATTACH EACH END OF MULLION TO STRUCTURE USING FOUR #10 SCREWS OF SUFFICIENT LENGTH TO ACHIEVE 1-3/8 IN. MIN. EMBEDMENT.

PREPARED BY:

PRODUCT TECHNOLOGY CORPORATION

250 INTERNATIONAL PARKWAY

SUITE 250

HEATHROW, FLORIDA 32746

PHONE 407 805-0365 / FAX 407 805-0366

CA010450

24-Mar-2002

01-0920