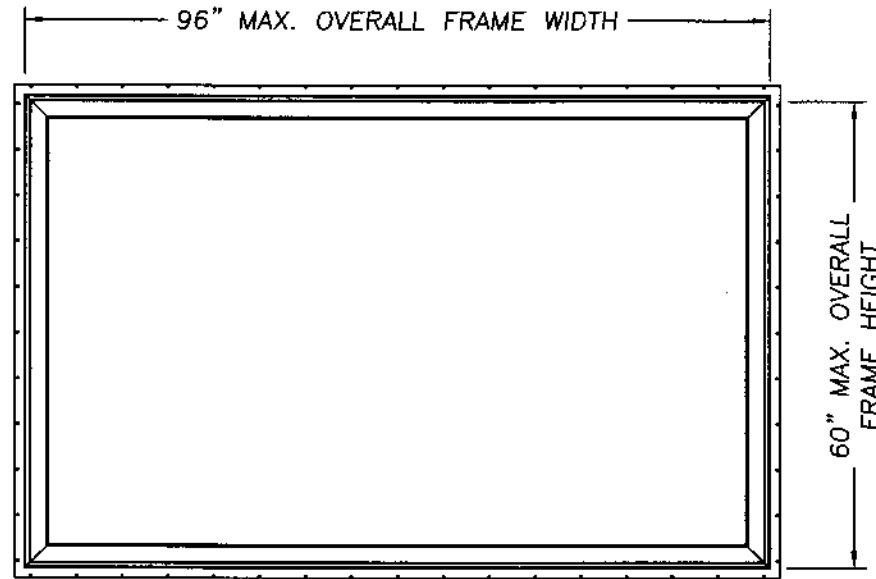


# EAGLE WINDOW & DOOR

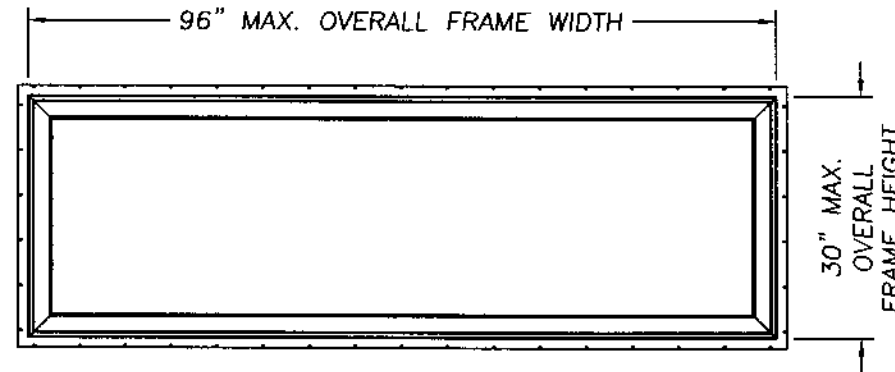
ALUMINUM CLAD FIXED CASEMENT WINDOW W/ NAILING FIN



0

DESIGN PRESSURE RATING
POS. 90.0 NEG. 90.0

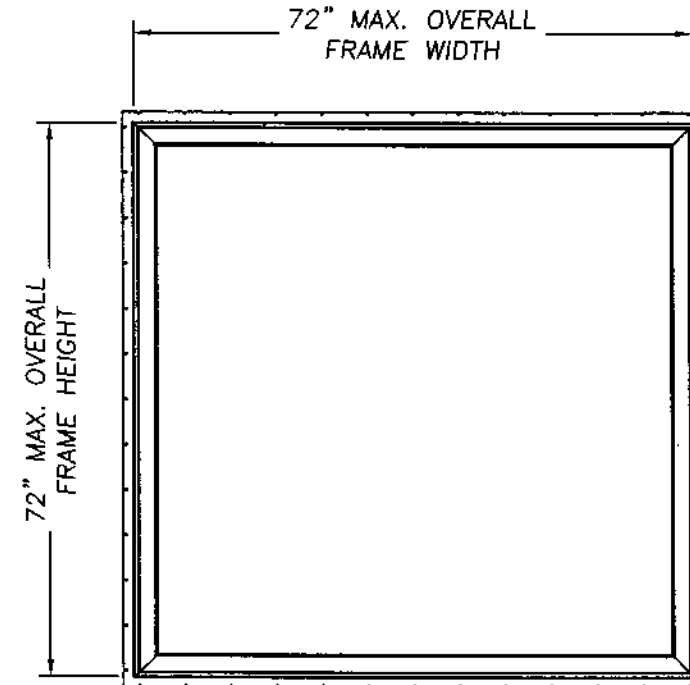
GLASS TABLE
3/4" INSULATED GLASS
3/16" TEMP. - AIR SPACE- 3/16" TEMP.



0

DESIGN PRESSURE RATING
POS. 70.0 NEG. 70.0

GLASS TABLE
3/4" INSULATED GLASS
3/16" ANN. - AIR SPACE- 3/16" ANN.



0

DESIGN PRESSURE RATING
POS. 47.0 NEG. 47.0

GLASS TABLE
3/4" INSULATED GLASS
1/4" ANN. - AIR SPACE- 1/4" ANN.

### GENERAL NOTES

- THIS PRODUCT IS DESIGNED TO COMPLY WITH THE FLORIDA BUILDING CODE.
- PRODUCT ANCHORS SHALL BE AS LISTED AND SPACED AS SHOWN ON DETAILS.
- WHEN THIS PRODUCT IS USED IN AN AREA REQUIRING WINDBORNE DEBRIS PROTECTION, FLORIDA BUILDING CODE APPROVED IMPACT RESISTANT SHUTTERS ARE REQUIRED.
- ANCHORING FOR A 2x BUCK TO MASONRY WITH NAILING FIN INSTALLATION SEE SHEET 2 OF 3.
- ANCHORING FOR WOOD STUD CONSTRUCTION WITH NAILING FIN INSTALLATION SEE SHEET 3 OF 3.

### PRODUCT DESCRIPTION

- THE 96" x 60" AND 96" x 30" FRAMES ARE LAMINATED VENEER LUMBER WITH SQUARE CUT CORNERS THAT ARE GLUED AND STAPLED.
- THE 72" x 72" FRAME IS PINE. THE SASH CORNERS ARE MORTISE AND TENON CONSTRUCTION.
- THE CLADDING CORNERS ARE MITER CUT, SECURED WITH SHEET METAL SCREWS, AND SEALED WITH SILICONE.

*Lyndon F. Schmidt*  
 September 24, 2002

Lyndon F. Schmidt  
 Florida P. E. No. 43409  
 19506 French Lace Drive Lutz, FL 33558

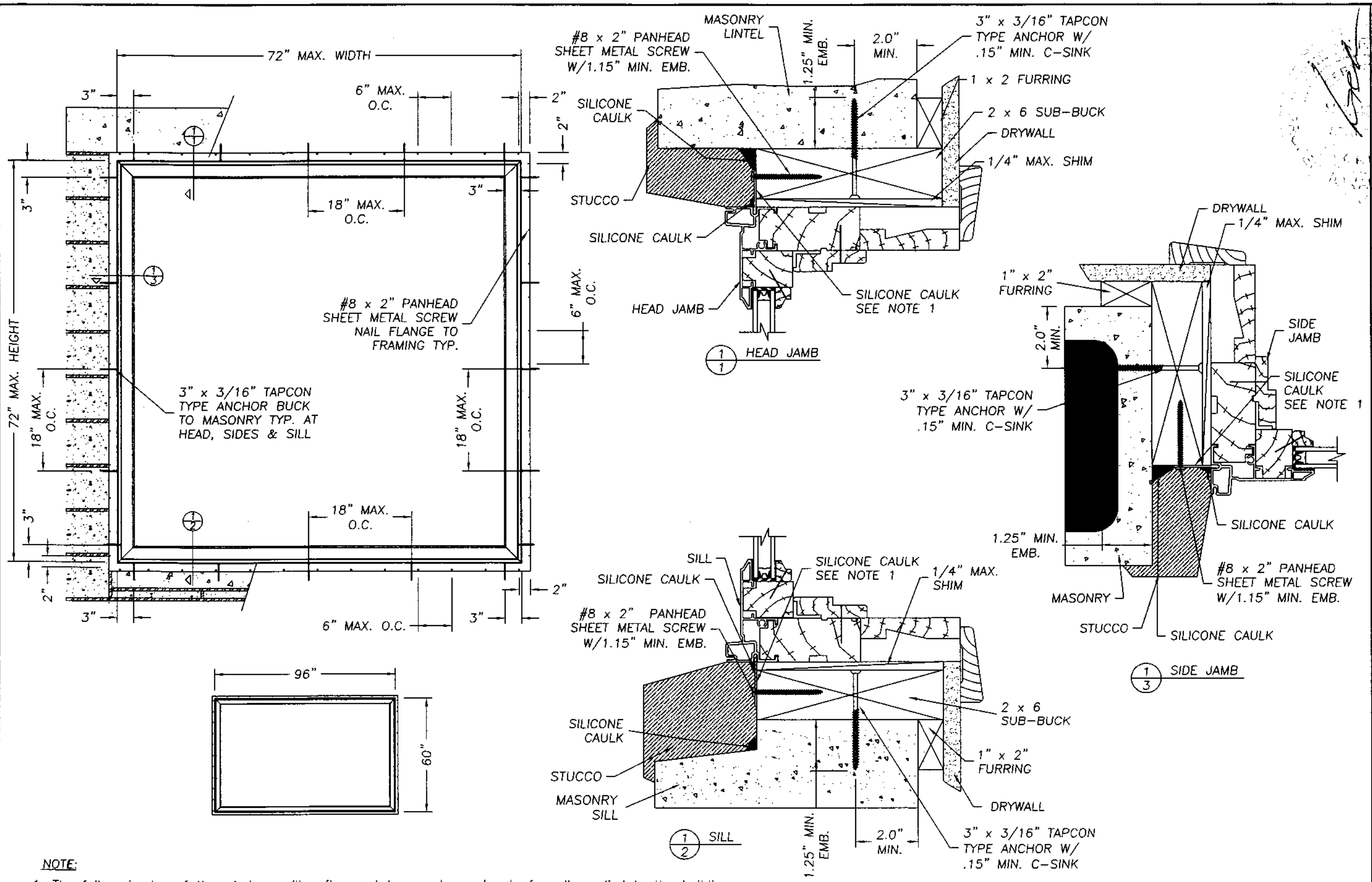
EAGLE WINDOW & DOOR, INC.  
 2045 KERPER BOULEVARD  
 DUBUQUE, IA 52004-1072  
 PH. 319.556.4408

PRODUCT:  
 EAGLE WINDOW & DOOR  
 ALUMINUM CLAD  
 FIXED CASEMENT WINDOW  
 PART OR ASSEMBLY:  
 GENERAL NOTES &  
 TYPICAL ELEVATIONS

NO.	DATE	BY	REVISIONS

**RW** BUILDING  
 CONSULTANTS, INC.  
 813.659.9197

DATE: 9/23/02  
 SCALE: N.T.S.  
 DWG. BY: WLN  
 CHK. BY: RW  
 DRAWING NO.:  
 EGL-103-OCF  
 SHEET 1 OF 3



- NOTE:**
1. The full perimeter of the window nailing fin must have a heavy bead of caulk applied to the building side before the window is placed in the opening.
  2. Adjust Tapcon anchor locations, if necessary, to maintain a minimum 2.0" clearance from mortar joints.

September 24, 2002  
 Lyndon F. Schmidt  
 Florida P. E. No. 43409  
 19506 French Lace Drive  
 Lutz, FL 33558

**EAGLE WINDOW & DOOR, INC.**  
 2045 KERPER BOULEVARD  
 DUBUQUE, IA 52004-1072  
 PH. 319.556.4408

ANCHORING CROSS SECTIONS  
 FOR 2X BUCK TO MASONRY  
 FIXED CASEMENT  
 ALUMINUM CLAD WINDOW

**RW** BUILDING  
 CONSULTANTS, INC.  
 813.659.9197

DATE: 9/23/02  
 SCALE: N.T.S.  
 DWG. BY: WLN  
 CHK. BY: RW  
 DRAWING NO.:  
 EGL-103-OCF  
 SHEET 2 OF 3

