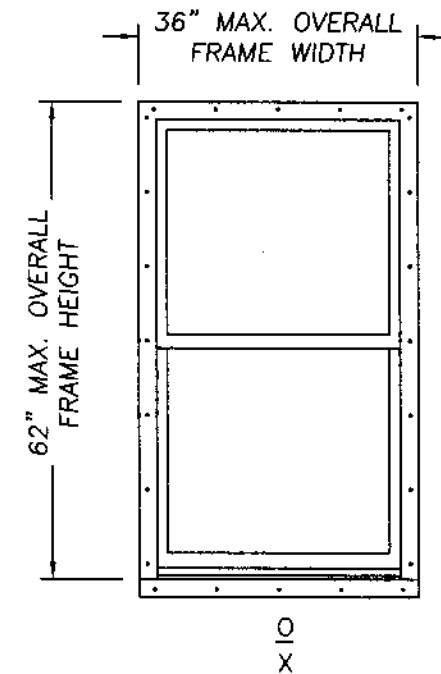
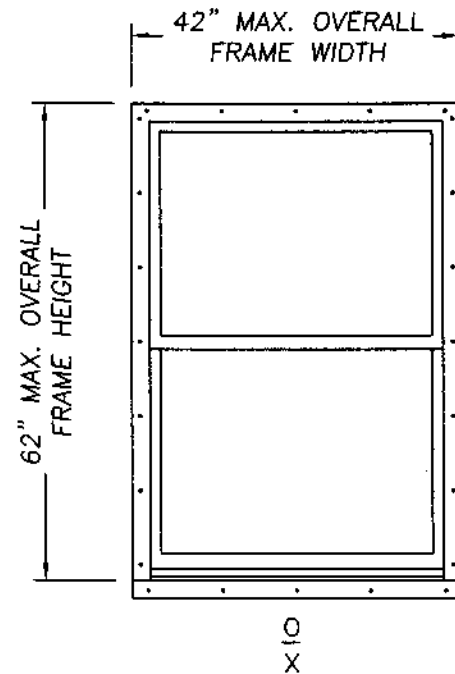
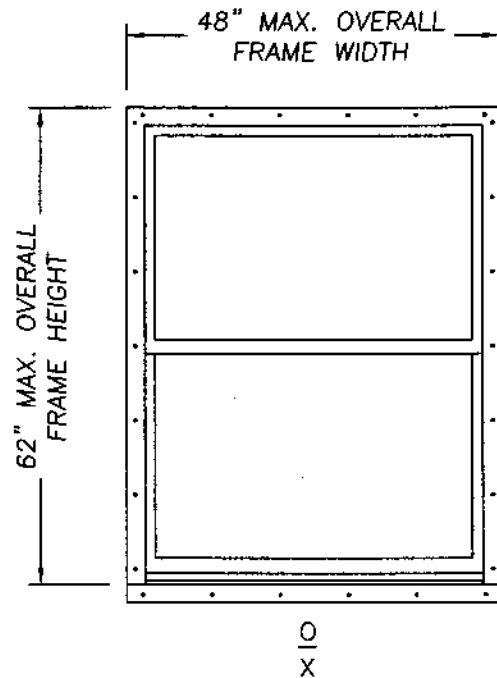
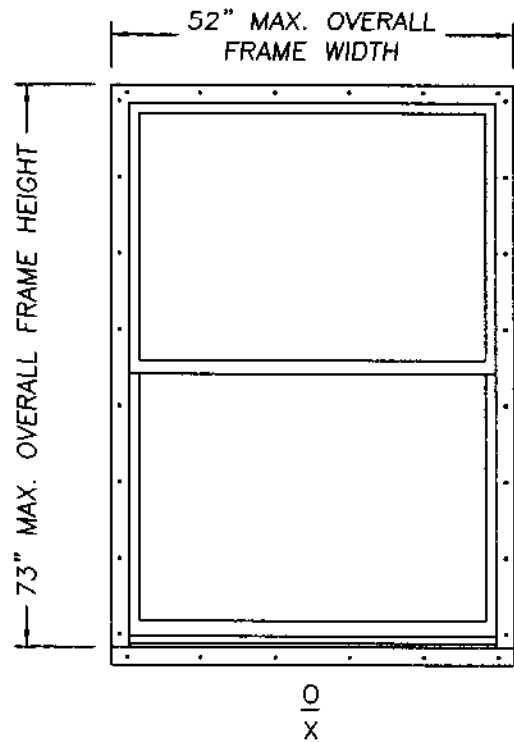


American Craftsman Windows

2100 SERIES MODEL 2160
EXTRUDED VINYL SINGLE HUNG WINDOWS W/NAILING FIN



DESIGN PRESSURE RATING
POS. 25.0 NEG. 25.0

DESIGN PRESSURE RATING
POS. 30.0 NEG. 30.0

DESIGN PRESSURE RATING
POS. 35.0 NEG. 35.0

DESIGN PRESSURE RATING
POS. 45.0 psf NEG. 45.0 psf

GLASS TABLE
5/8" INSULATED GLASS
1/8" ANN. - AIR SPACE - 1/8" ANN.

GLASS TABLE
5/8" INSULATED GLASS
1/8" ANN. - AIR SPACE - 1/8" ANN.

GLASS TABLE
5/8" INSULATED GLASS
1/8" ANN. - AIR SPACE - 1/8" ANN.

GLASS TABLE
5/8" INSULATED GLASS
1/8" ANN. - AIR SPACE - 1/8" ANN.

(ACHIEVED BY COMPARISON ANALYSIS)

(ACHIEVED BY COMPARISON ANALYSIS)

GENERAL NOTES

- THIS PRODUCT IS DESIGNED TO COMPLY WITH THE FLORIDA BUILDING CODE.
- PRODUCT ANCHORS SHALL BE AS LISTED AND SPACED AS SHOWN ON DETAILS.
- WHEN THIS PRODUCT IS USED IN AN AREA REQUIRING WINDBORNE DEBRIS PROTECTION, FLORIDA BUILDING CODE APPROVED IMPACT RESISTANT SHUTTERS ARE REQUIRED.
- MASONRY ANCHORING FOR 1x BUCK SEE SHEET 2 OF 3.
- MASONRY ANCHORING FOR 2x BUCK SEE SHEET 3 OF 3.

PRODUCT DESCRIPTION

- VINYL SINGLE HUNG WINDOW WITH MITERED AND WELDED CORNERS.
- THE HEAD AND SIDE JAMBS ARE EXTRUDED VINYL WITH AN EXTERIOR WALL THICKNESS OF 0.070" +/- 0.008".
- ALL ACTIVE SASH MEMBERS REINFORCED WITH SOLID ALUMINUM BAR STOCK.
- THE FIXED MEETING RAIL UTILIZES A ROLLED FORMED STEEL REINFORCEMENT.

Lyndon F. Schmidt
 Florida P. E. No. 45409
 19506 French Lace Drive Lutz, FL 33558

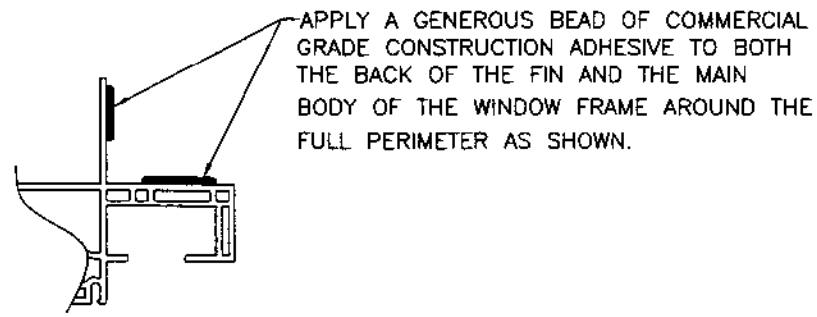
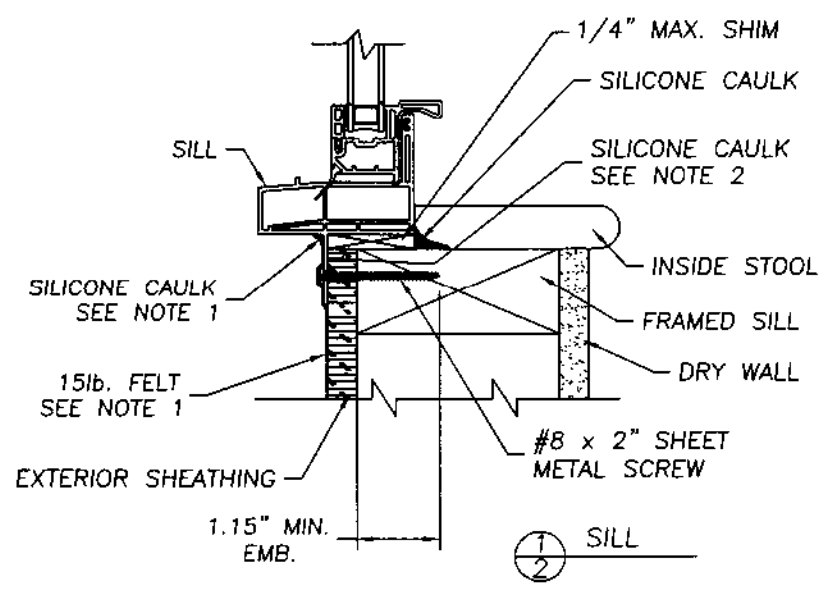
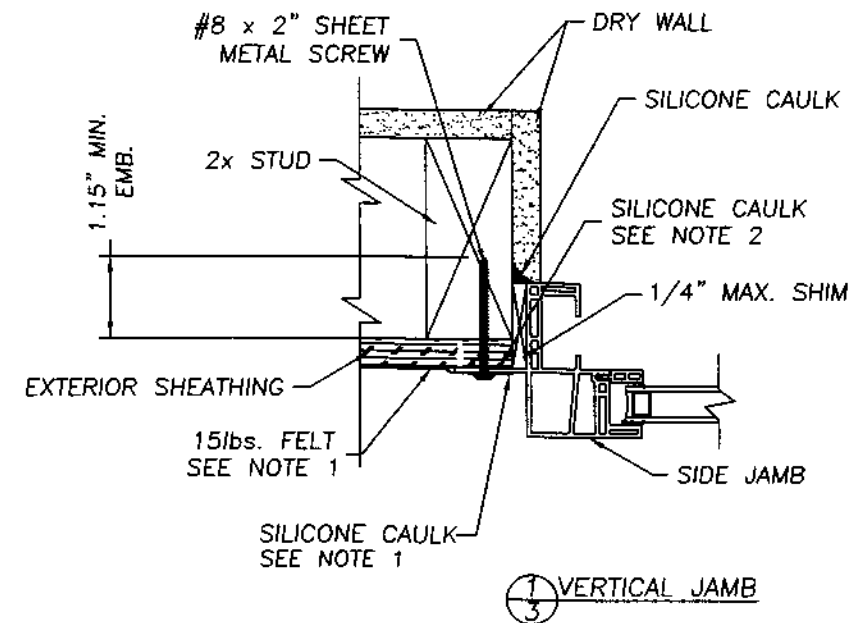
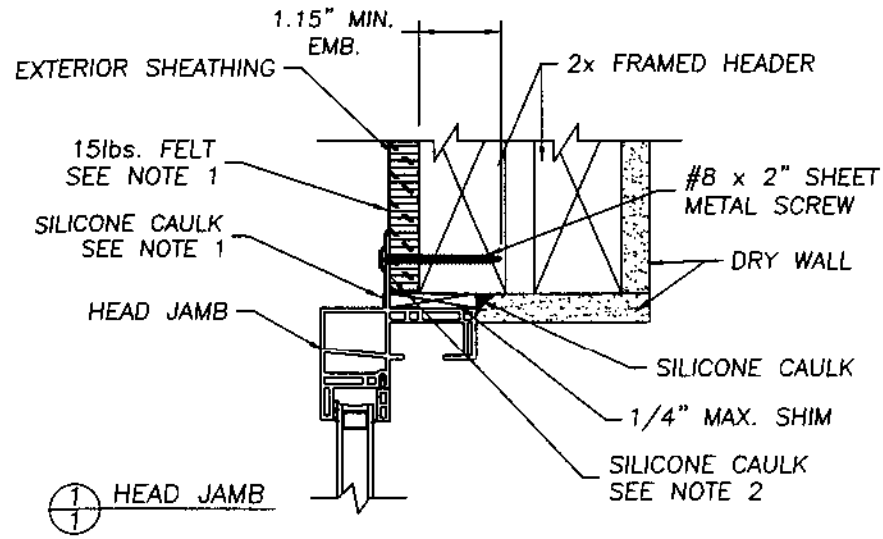
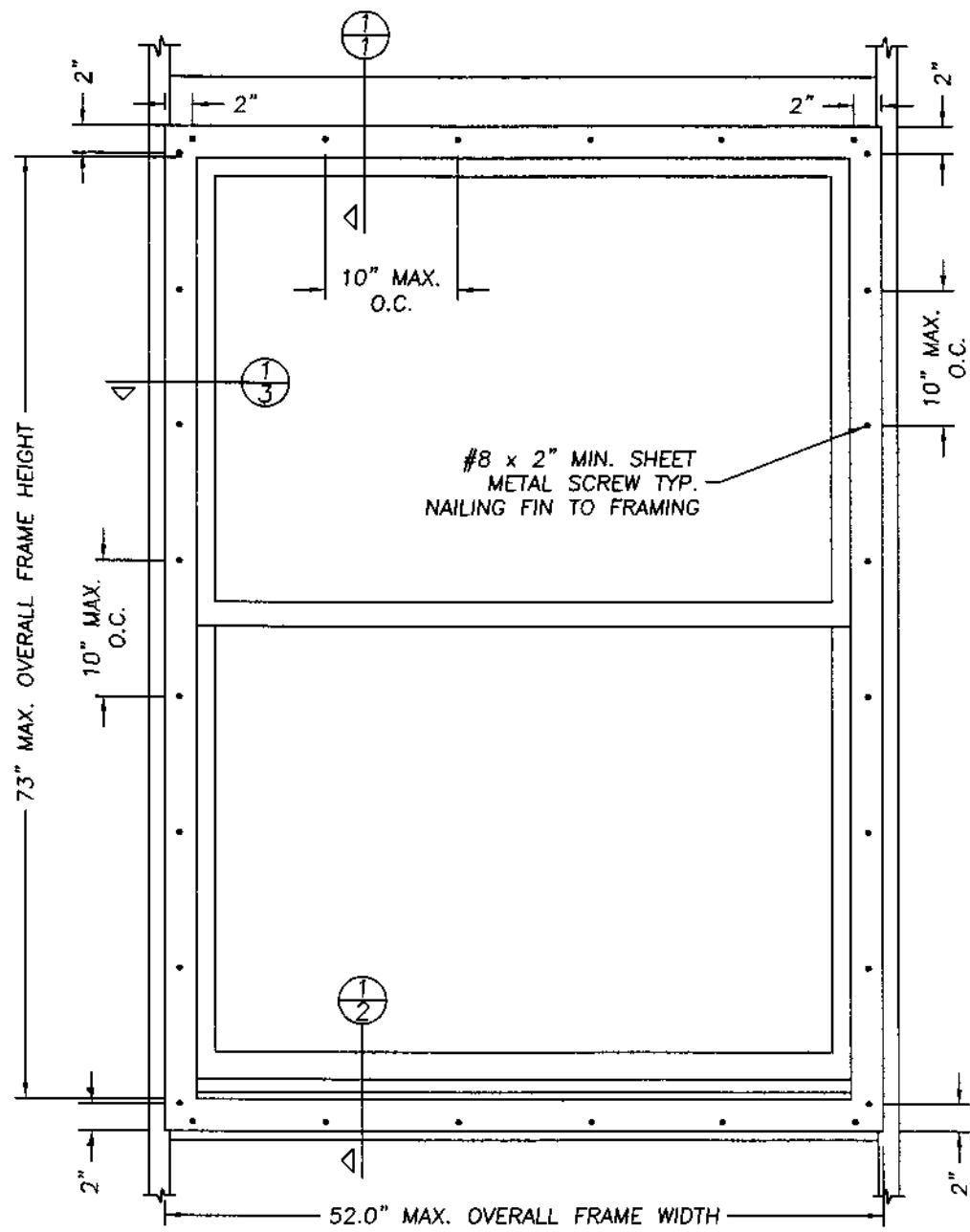
American Craftsman Windows
 P O Box 6029
 North Brunswick, NJ 08902
 PH. 800 299-9501

PRODUCT: AMERICAN CRAFTSMAN
 EXTRUDED VINYL
 SINGLE HUNG WINDOW
 PART OR ASSEMBLY:
 GENERAL NOTES &
 TYPICAL ELEVATIONS

NO.	DATE	BY	REVISIONS

RW BUILDING
 CONSULTANTS, INC.
 813.659.9197

DATE: 09/23/02
SCALE: N.T.S.
DWG. BY: TJH
CHK. BY: RW
DRAWING NO.: AC-403W-OC
SHEET 1 OF 2



NOTE:

- All loose edges of the felt paper must be sealed with silicone.
- The full perimeter of the window nailing fin must have a heavy bead of caulk applied to the building side before the window is placed in the opening.

Handwritten signature and stamp

September 24, 2002
 Lyndon F. Schmidt
 Florida P. E. No. 43409
 19506 French Lace Drive
 Lutz, FL 33558

American Craftsman Windows
 P O Box 6029
 North Brunswick, NJ 08902
 PH. 800 299-9501

ANCHORING CROSS SECTIONS
 FOR WOOD CONSTRUCTION
 SINGLE HUNG WITH NAILING FIN
 EXTRUDED VINYL WINDOW

RW BUILDING CONSULTANTS, INC.
 813.659.9197

DATE: 09/23/04
 SCALE: N.T.S.
 DWG. BY: TJH
 CHK. BY: R.W.
 DRAWING NO.: AC-403W-OC
 SHEET 2 OF 2