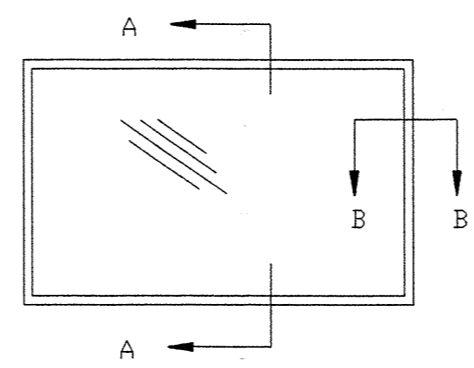
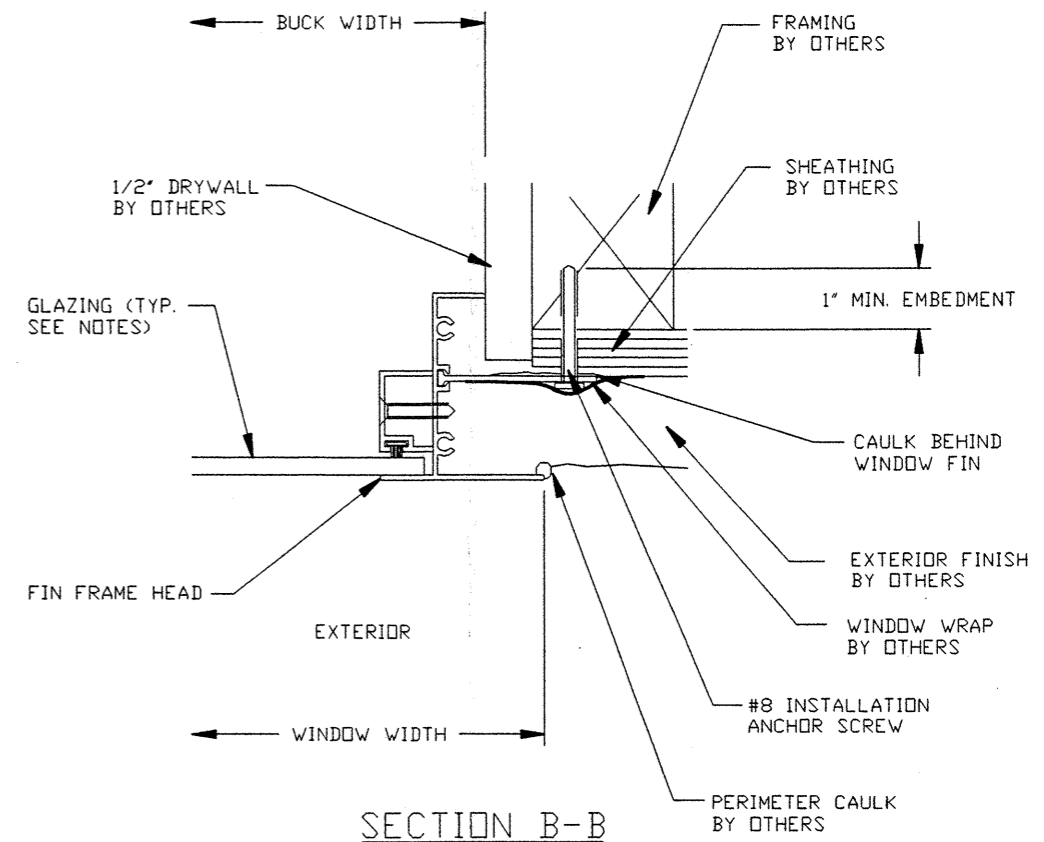


SECTION A-A



EXTERIOR ELEVATION

DESIGN PRESSURE = ±35 PSF (ANNEALED GLASS)
±70 PSF (TEMPERED GLASS)



SECTION B-B

- NOTES:
- 1) WINDOW FRAME MATERIAL: ALUMINUM ALLOY 6063.
 - 2) #8 INSTALLATION ANCHOR SCREWS MUST BE OF SUFFICIENT LENGTH TO ACHIEVE MIN. EMBEDMENT OF 1" INTO WOOD FRAME MEMBER. DESIGN PRESSURE UP TO 35 PSF PLACE INSTALLATION ANCHOR SCREWS 3" FROM END OF FIN MAX. & 24" O.C. MAX. FOR DESIGN PRESSURE FROM 36 PSF TO 70 PSF PLACE #8 SCREW ANCHORS 3" FROM END OF FIN MAX. & 18" O.C. MAX.
 - 3) CAULK BEHIND WINDOW FIN WITH LATEX CAULK.
 - 4) USE LATEX CAULK FOR PERIMETER SEAL AROUND EXTERIOR OF WINDOW FLANGE.
 - 5) IF EXACT WINDOW SIZE IS NOT LISTED IN ANCHOR CHART, USE ANCHOR QUANTITY LISTED WITH NEXT LARGER SIZE.
 - 6) GLASS THICKNESS MAY VARY PER THE REQUIREMENTS OF ASTM E1300 GLASS CHARTS. SINGLE GLAZING IS SHOWN. INSULATING GLASS ALSO QUALIFIED.
 - 7) FACTORY PUNCHED HOLES IN FIN JAMB DO NOT REQUIRE INSTALLATION SCREWS. IF APPLICABLE, INSTALLATION ANCHORS ARE ONLY REQUIRED THRU FIN AS SHOWN ON THIS SHEET.
 - 8) MAX. ALLOWABLE SIZES:
ANNEALED GLASS UNITS = 73-1/2" X 61-1/4"
TEMPERED GLASS UNITS = 84" X 72-1/2"
 - 9) INSTALLATION AS STATED HEREIN COMPLIES WITH THE FLORIDA BUILDING CODE.

CUSTOM WINDOW SYSTEMS, INC. OCALA, FLORIDA		
TITLE: SERIES 4000 ALUMINUM FIXED WINDOW FIN INSTALLATION DRAWING		
ENGINEER: MANUEL MARTINEZ	DRN: BB	DATE: 2/7/02
DISCIPLINE: CIVIL	SCALE: N.T.S.	DWG. NO: CWS0111
FL. REG. NO: 47182	REV. LETTER:	SHEET: 1 OF 1

Handwritten signature and initials