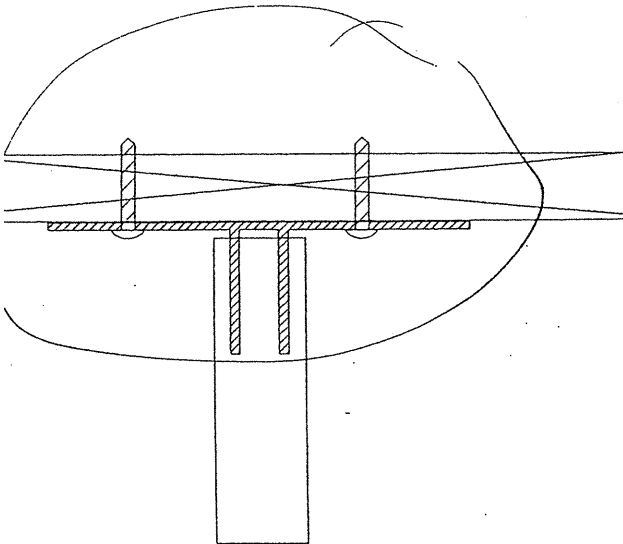
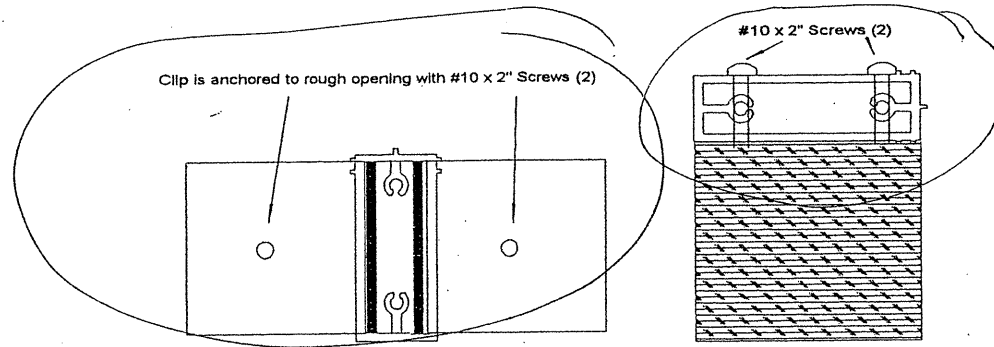
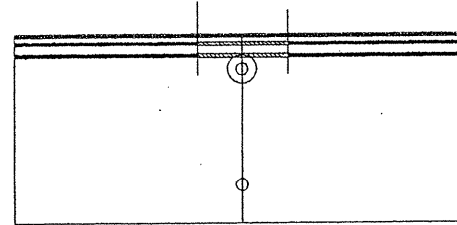
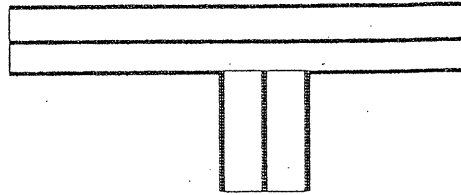


Specialty Window Mull/Clip assembly



CERTIFIED TESTING LABORATORIES
ARCHITECTURAL DIVISION
7252 NARCOOSSEE ROAD
ORLANDO, FLORIDA 32822

CTLA No. 829W-2-W3
 Date Verified: 4-5-02
 Verified By: [Signature]

Mull Fastener Requirements

3/16" x 3" FH TAPCONS or #10 x 2" PH Screws
 in each Clip.

Cross sections require 2- #10 x 2" screws



Specialty Windows of Florida, Inc.
 5520 Industrial Blvd.
 Pensacola, Florida 32583

Name:

Drawn by:

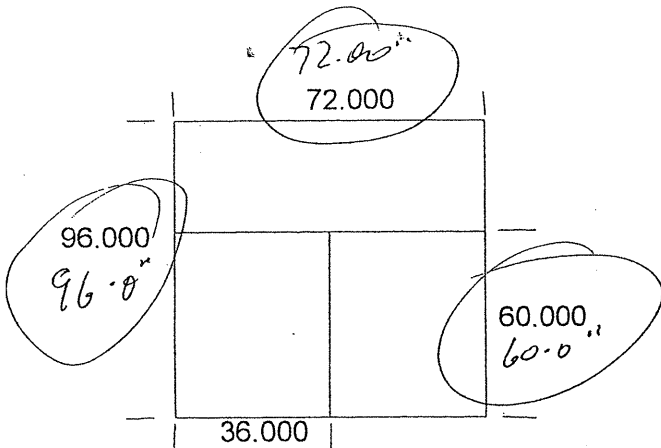
R. Bradley

Date:

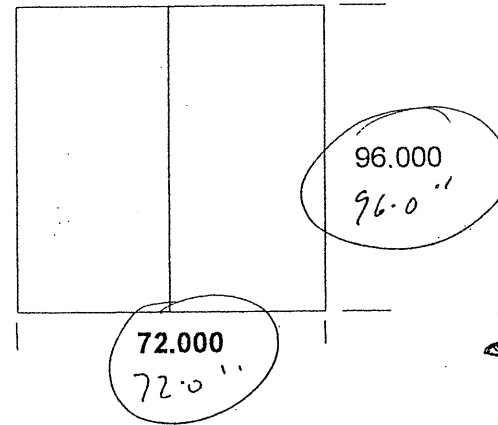
02/12/2002

Part
 DWG No. 2" or 3" Aluminum Structural Mull anchoring/assembly


Configuration #1




Configuration #2



2 1/4" or 3" Aluminum Structural Mull
2 1/4" 3"

 **CERTIFIED TESTING LABORATORIES**
ARCHITECTURAL DIVISION
7252 NARCOOSSEE ROAD
ORLANDO, FLORIDA 32822

CTLA No. 829W-2W3
 Date Verified: 4-5-02
 Verified By: [Signature]

	
Specialty Windows of Florida, 5520 Industrial Blvd. Pensacola, Florida 32583	
Name: _____	
Drawn by:	Date:
R. Bradley	02/01/2002
Part DWG No. <u>Structural Mulls</u>	