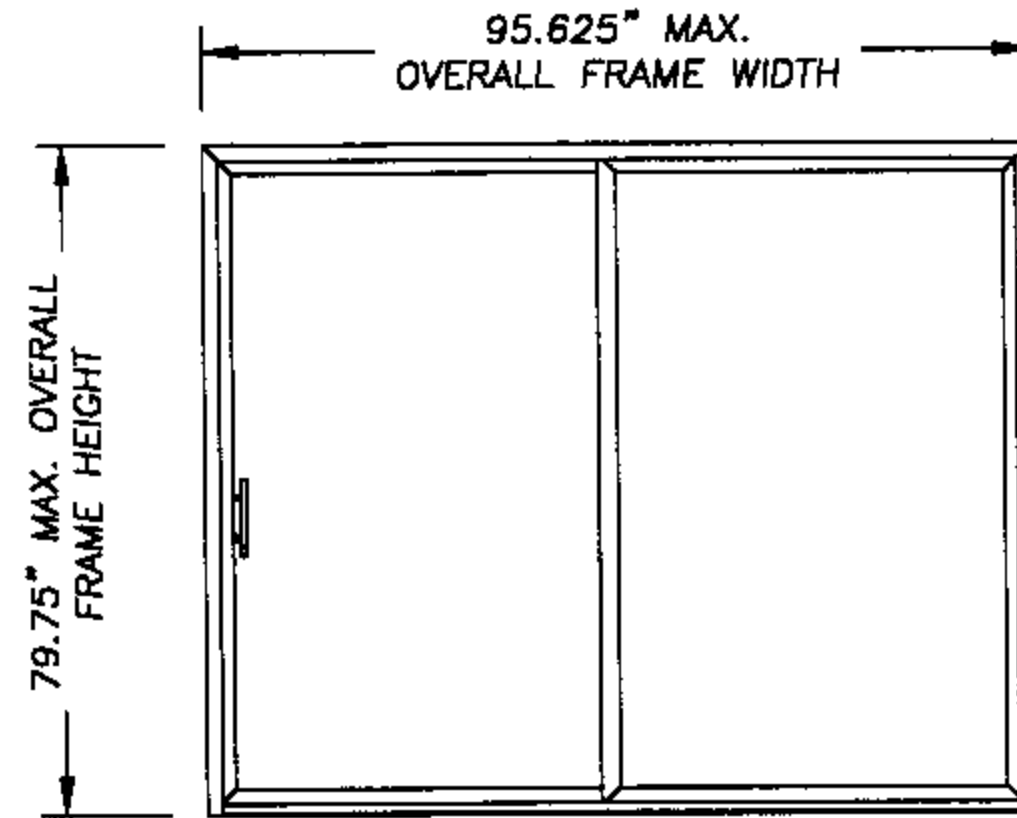
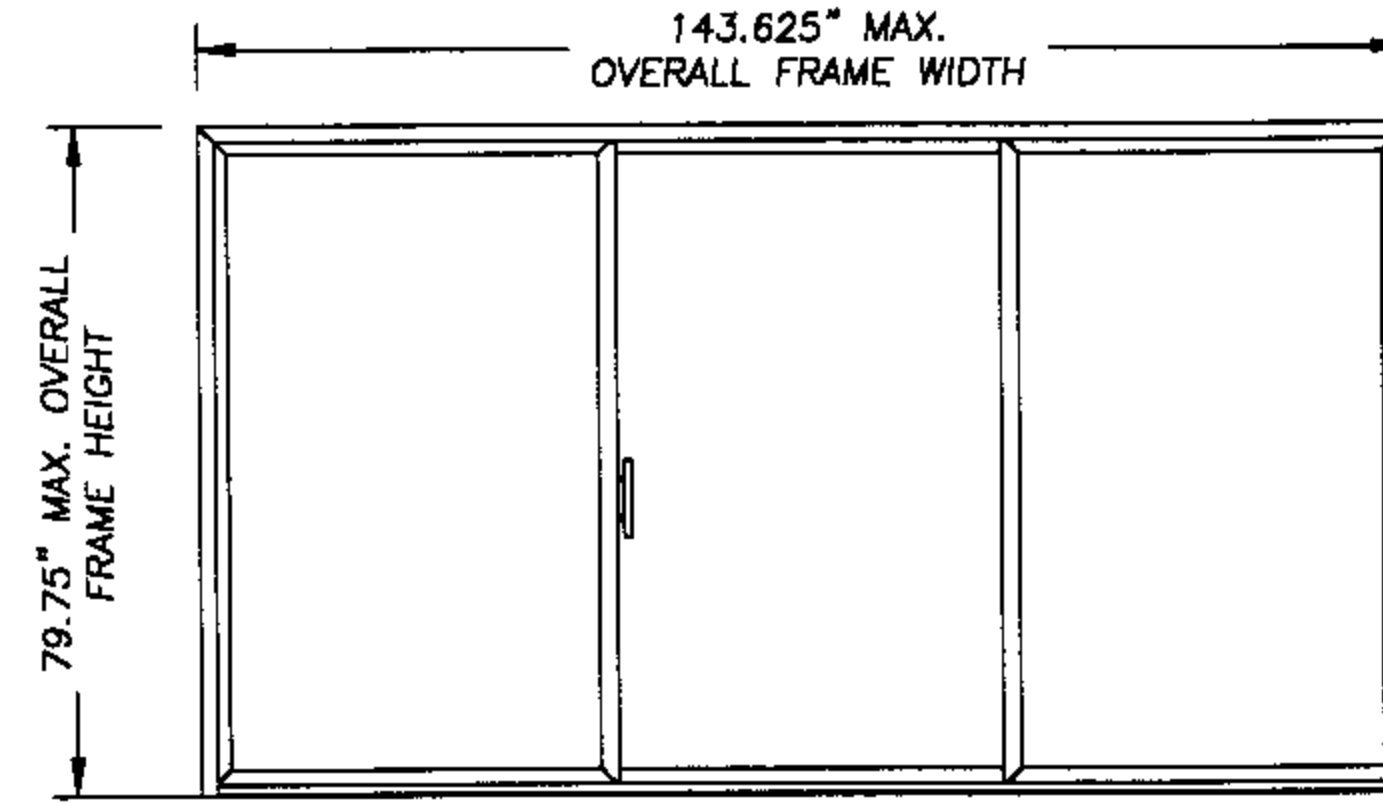


American Craftsman Series 5500 / 5600 / 5700

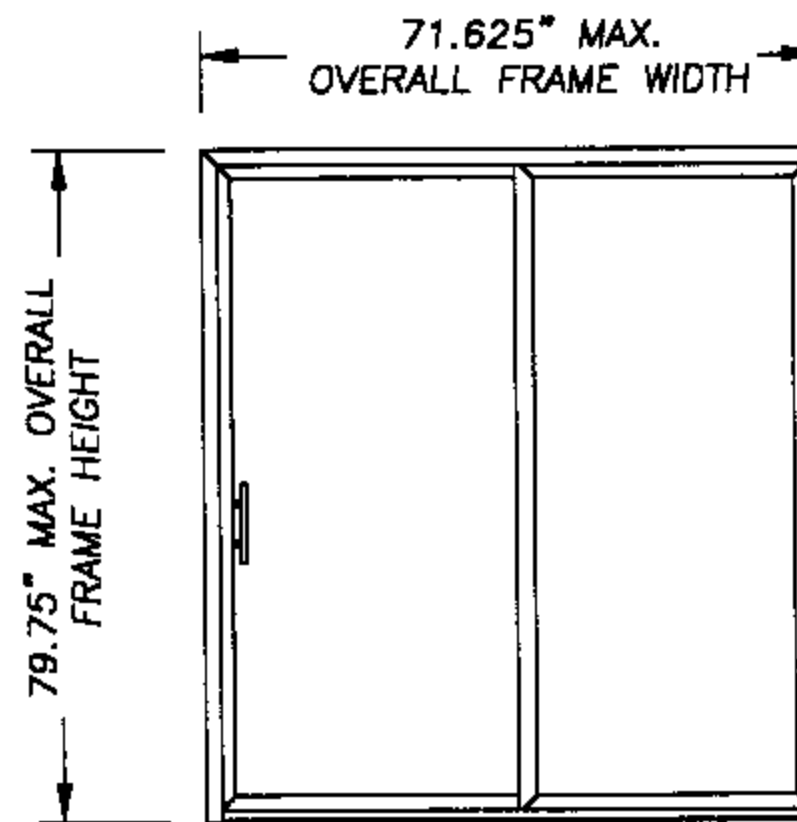
EXTRUDED VINYL PATIO DOORS
(Mfg. By Silverline Building Products)



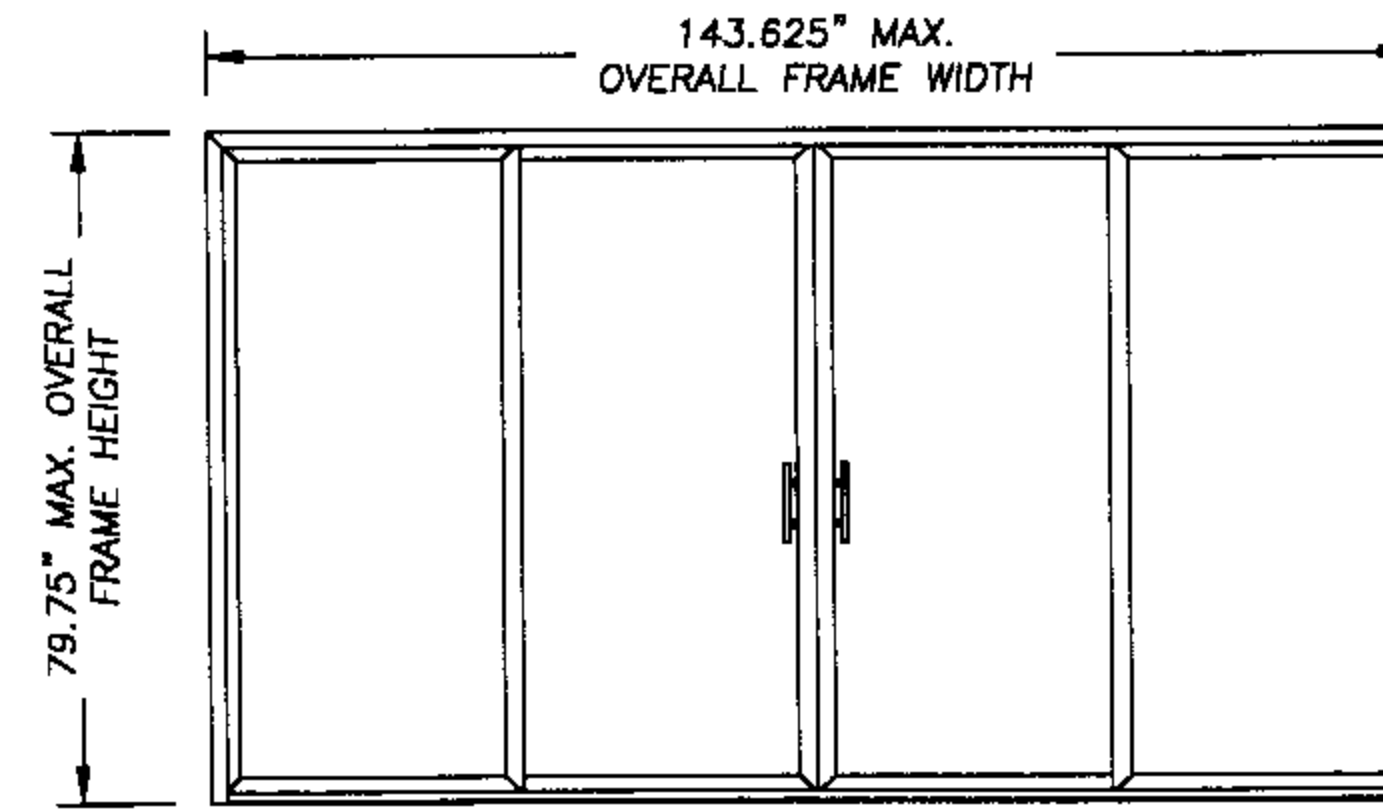
DESIGN PRESSURE RATING	
+35.0 psf	-35.0 psf



DESIGN PRESSURE RATING	
+35.0 psf	-35.0 psf



DESIGN PRESSURE RATING	
+35.0 psf	-39.0 psf



DESIGN PRESSURE RATING	
+35.0 psf	-35.0 psf

GENERAL NOTES

1. THIS PRODUCT IS DESIGNED TO COMPLY WITH THE FLORIDA BUILDING CODE.
2. PRODUCT ANCHORS SHALL BE AS LISTED AND SPACED AS SHOWN ON DETAILS.
3. WHEN THIS PRODUCT IS USED IN AN AREA REQUIRING WINDBORNE DEBRIS PROTECTION, FLORIDA BUILDING CODE APPROVED IMPACT RESISTANT SHUTTERS ARE REQUIRED.
4. MASONRY ANCHORING FOR 1x BUCK SEE SHEET 2 OF 4.
5. MASONRY ANCHORING FOR 2x BUCK SEE SHEET 3 OF 4.
6. WOOD STUD ANCHORING SEE SHEET 4 OF 4.

PRODUCT DESCRIPTION

1. VINYL SLIDING GLASS DOOR WITH WELDED MITERED CORNERS.
2. THE HEAD AND SIDE JAMBS ARE EXTRUDED VINYL WITH AN EXTERIOR WALL THICKNESS OF 0.070" +/- 0.008"
3. STEEL REINFORCEMENT CHANNEL IS USED IN THE INTERIOR AND EXTERIOR OF THE MEETING STILES.
4. THE GLASS IS 1" OVERALL, CONSISTING OF TWO LITES OF 1/8" TEMPERED TRANSPARENT GLASS.

American Craftsman Windows
P O Box 6029
North Brunswick, NJ 08902
PH. 800 299-9501

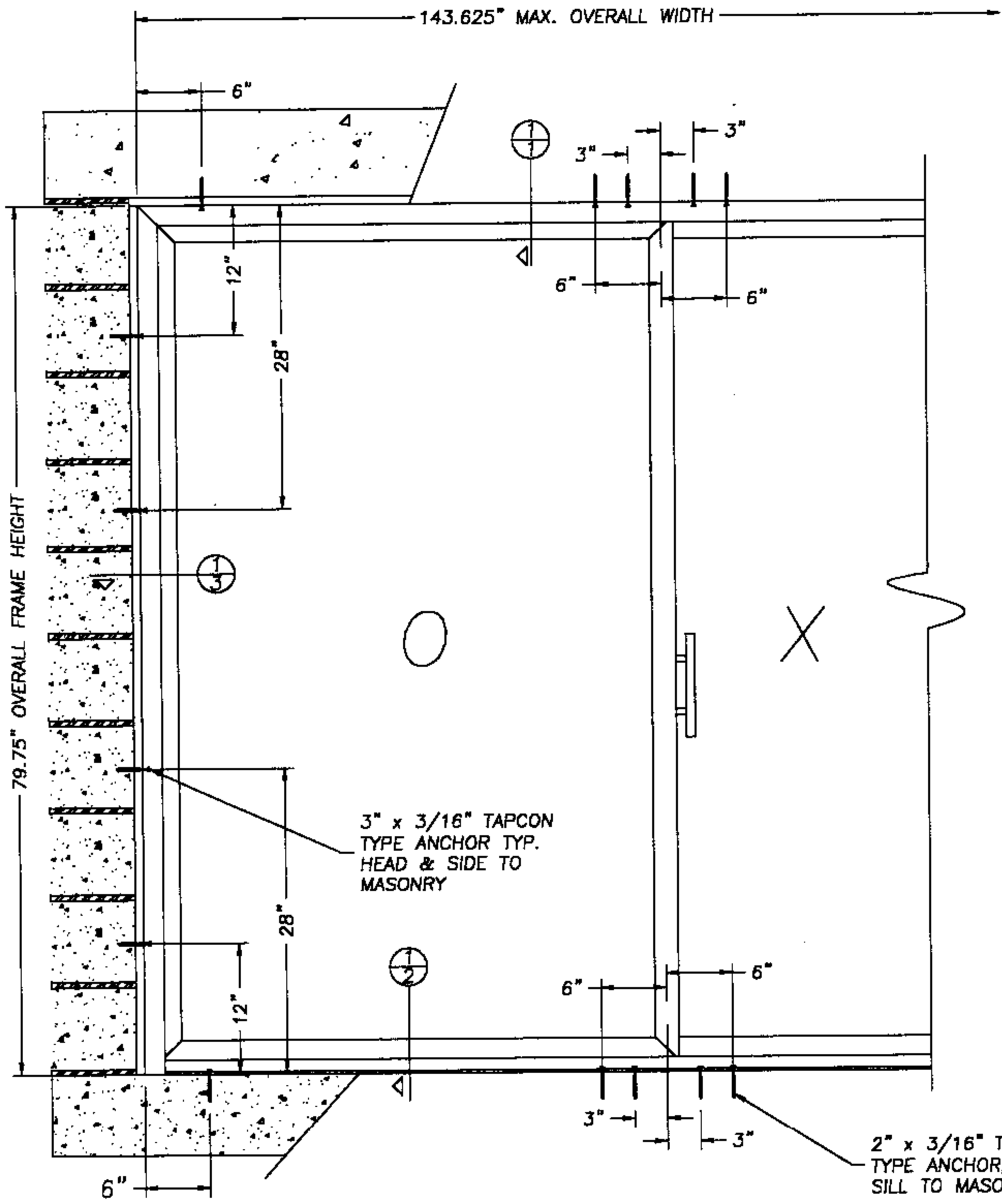
PRODUCT:
AMERICAN CRAFTSMAN
VINYL PATIO DOOR
PART OR ASSEMBLY:
GENERAL NOTES &
TYPICAL ELEVATIONS

NO.	DATE	BY	REVISIONS

RW BUILDING
CONSULTANTS, INC.
813.659.9197

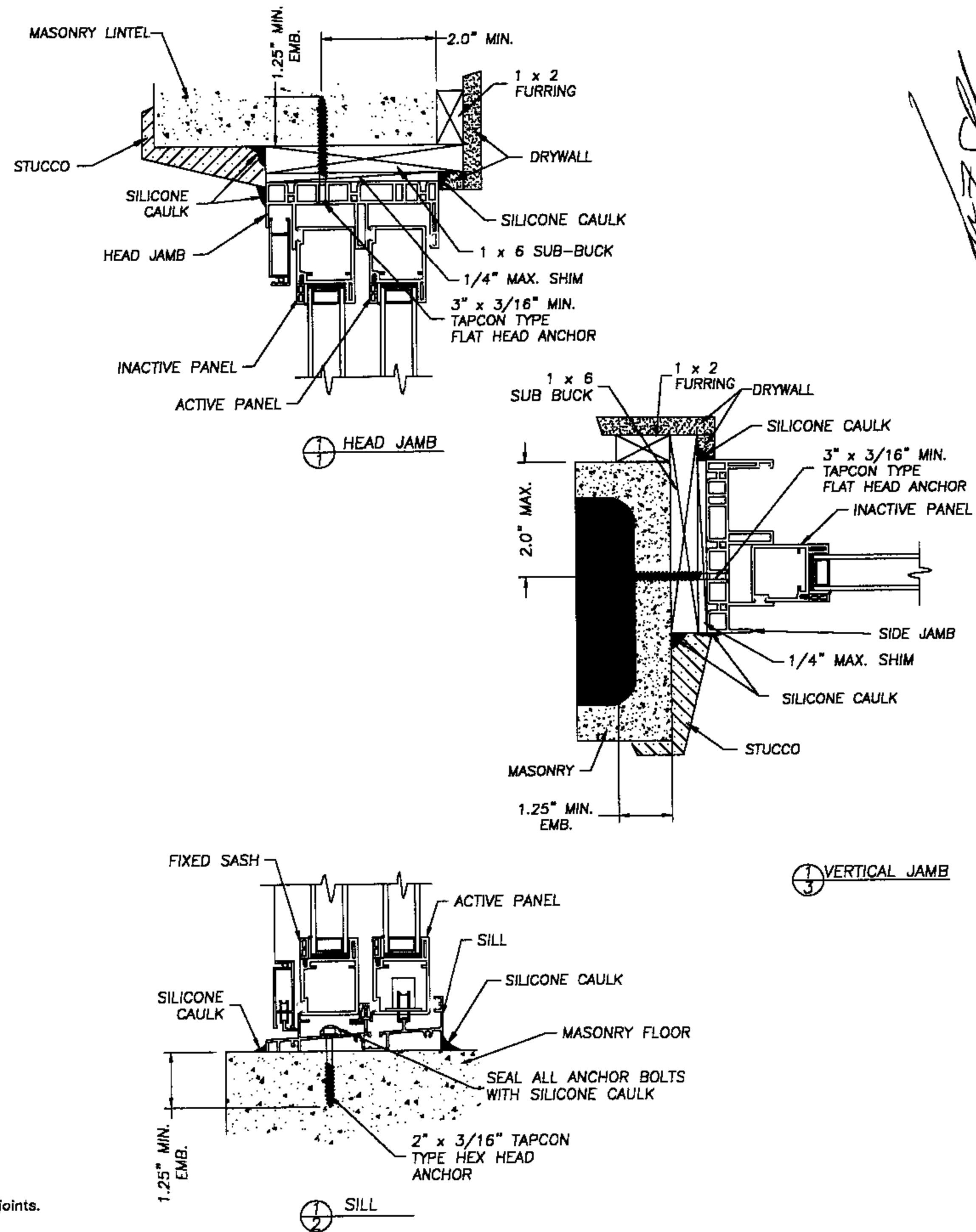
DATE: 6/18/02
SCALE: N.T.S.
DWG. BY: WLN
CHK. BY: RW
DRAWING NO.: AC-409-OC
SHEET 1 OF 4

Lyndon F. Schmidt
August 2, 2002
Lyndon F. Schmidt
Florida P. E. No. 43409
19506 French Lace Drive Lutz, FL 33558



NOTE

Adjust Tapcon anchor locations, if necessary, to maintain a minimum 2.0" clearance from mortar joints.



August 2, 2002

Lyndon F. Schmidt
Florida P. E. No. 43409
19506 French Lace Drive
Lutz, FL 33558

American Craftsman Windows
P O Box 6029
North Brunswick, NJ 08902
PH. 800 299-9501

ANCHORING CROSS SECTIONS
FOR 1X BUCK TO MASONRY
PATIO DOOR
EXTRUDED VINYL DOOR

RW BUILDING
CONSULTANTS, INC.
813.659-9197

DATE: 6/18/02

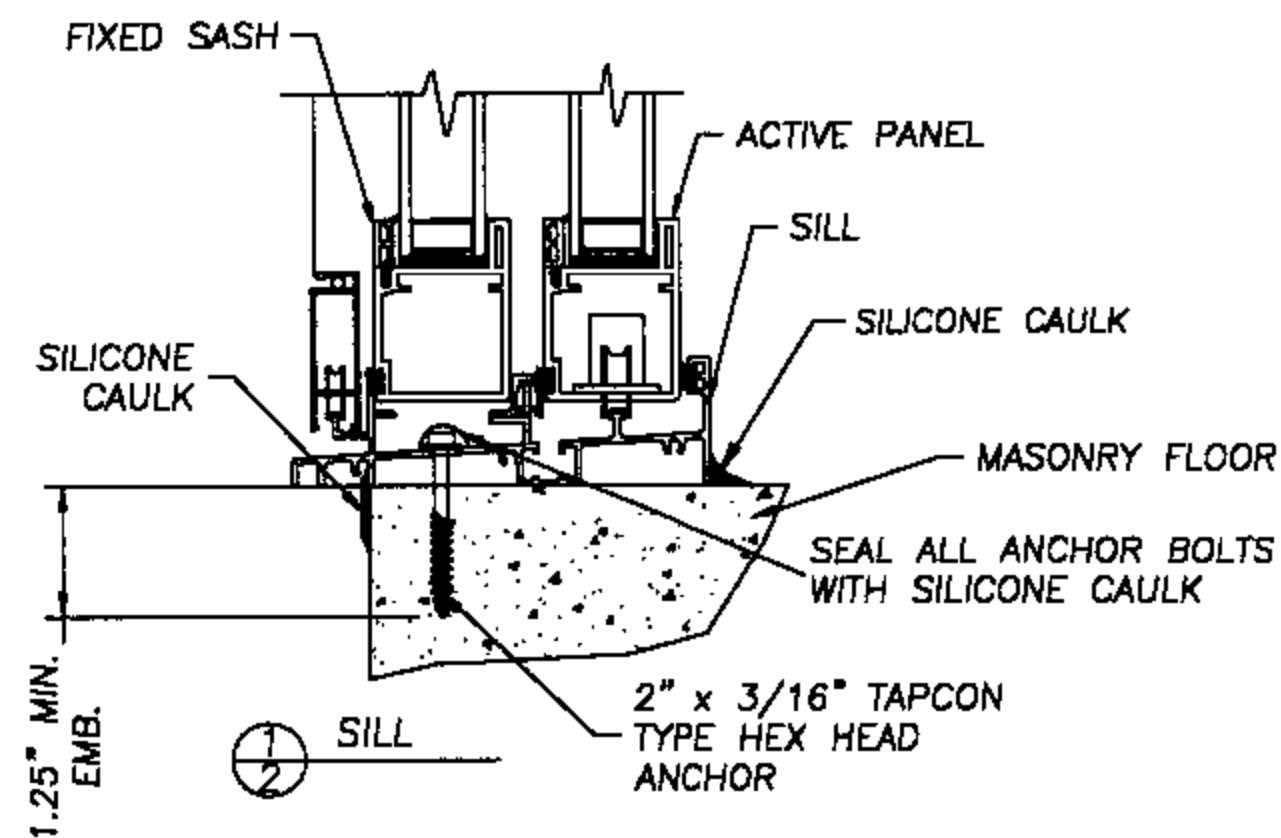
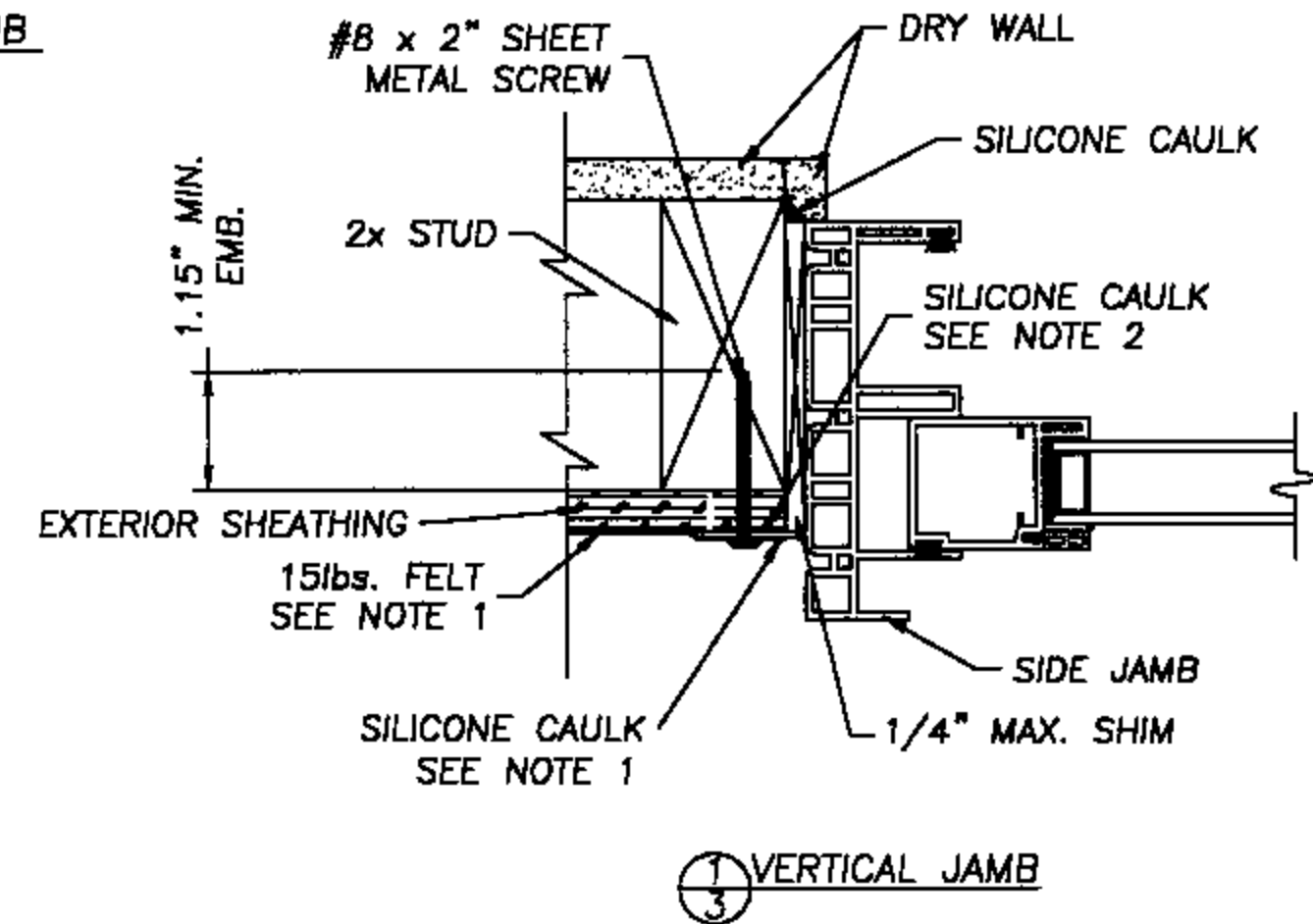
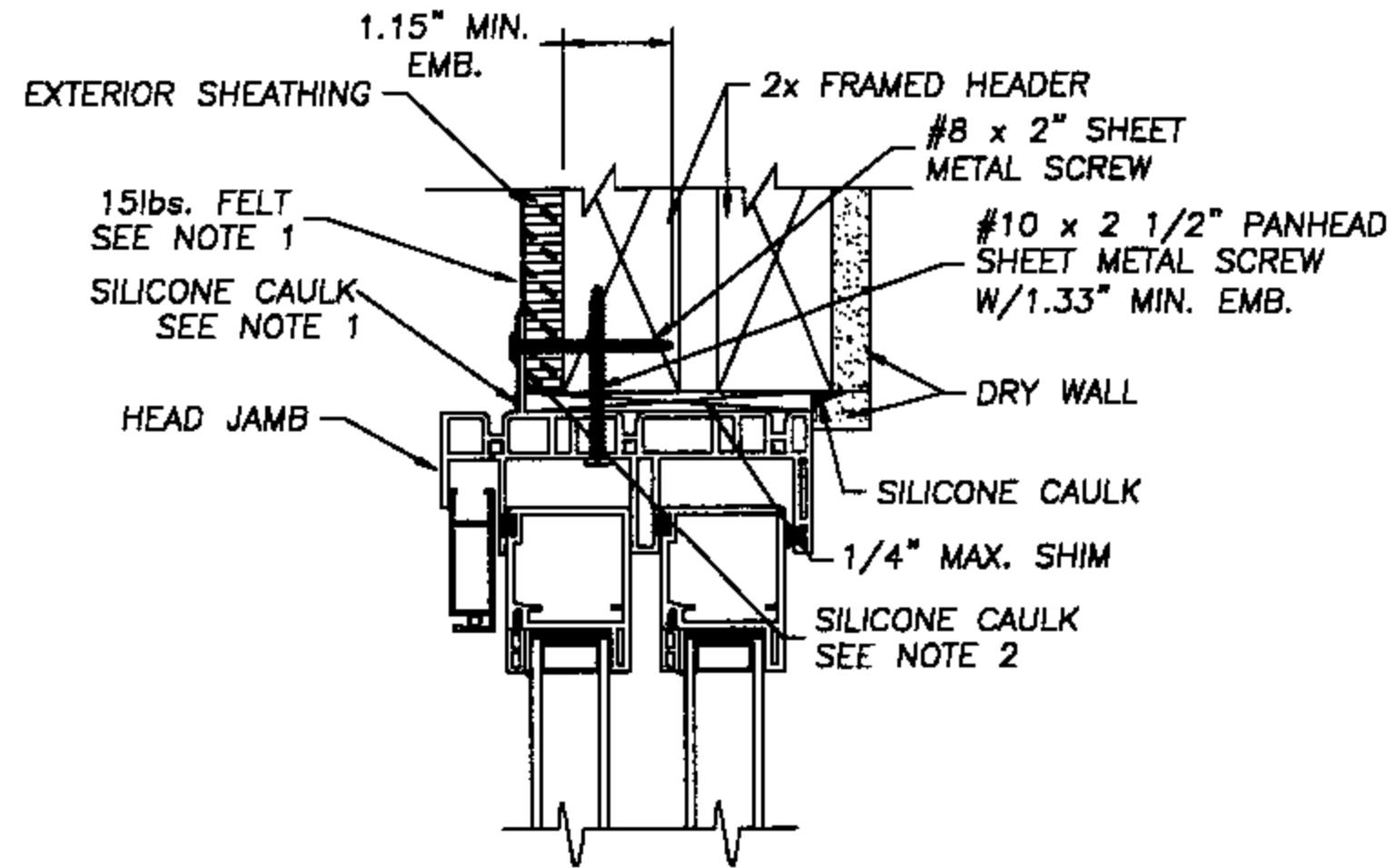
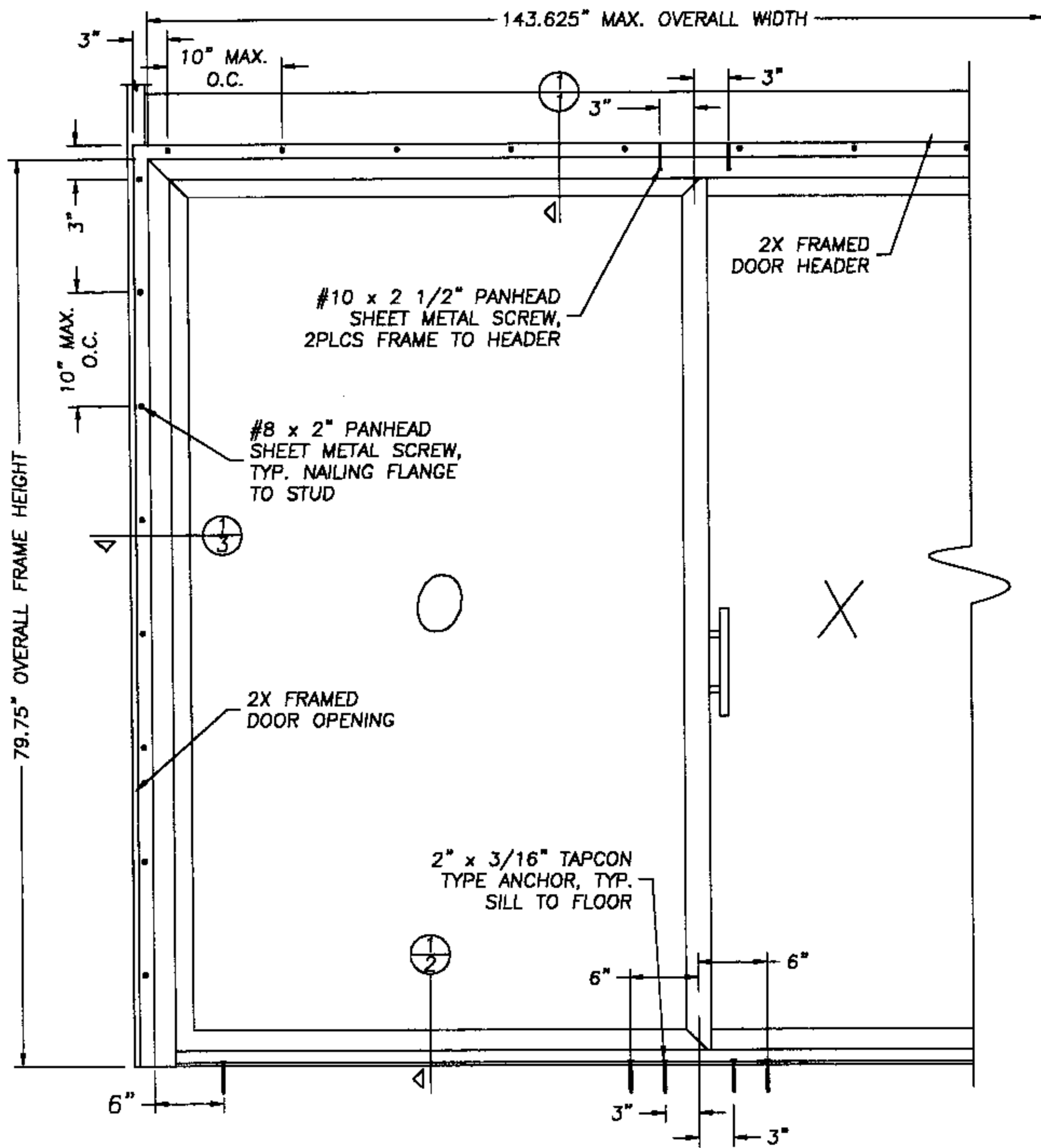
SCALE: N.T.S.

DWG. BY: WLN

CHK. BY: R.W.

DRAWING NO.:
AC-409-OC

SHEET 2 OF 4



NOTES:

1. 15lbs. felt must be used as a water barrier. The felt must cover the nailing flange and anchor screw heads. All edges of the felt paper must be sealed with silicone caulk.
2. The full perimeter of the door nailing fin must have a heavy bead of caulk applied to the building side before the unit is placed in the opening.

August 2, 2002

Lyndon F. Schmidt
Florida P. E. No. 43409
19506 French Lace Drive
Lutz, FL 33558

American Craftsman Windows
P O Box 6029
North Brunswick, NJ 08902
PH. 800 299-9501

ANCHORING CROSS SECTIONS
FOR WOOD CONSTRUCTION W/
NAILING FLANGE EXTRUDED
VINYL PATIO DOOR

RW BUILDING
CONSULTANTS, INC.
813.659-9197

DATE: 6/18/02

SCALE: N.T.S.

DWG. BY: WLN

CHK. BY: R.W.

DRAWING NO.:
AC-409-OC

SHEET 4 OF 4