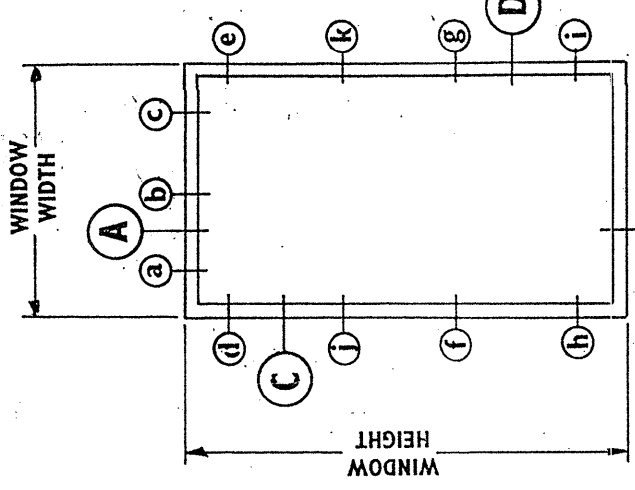
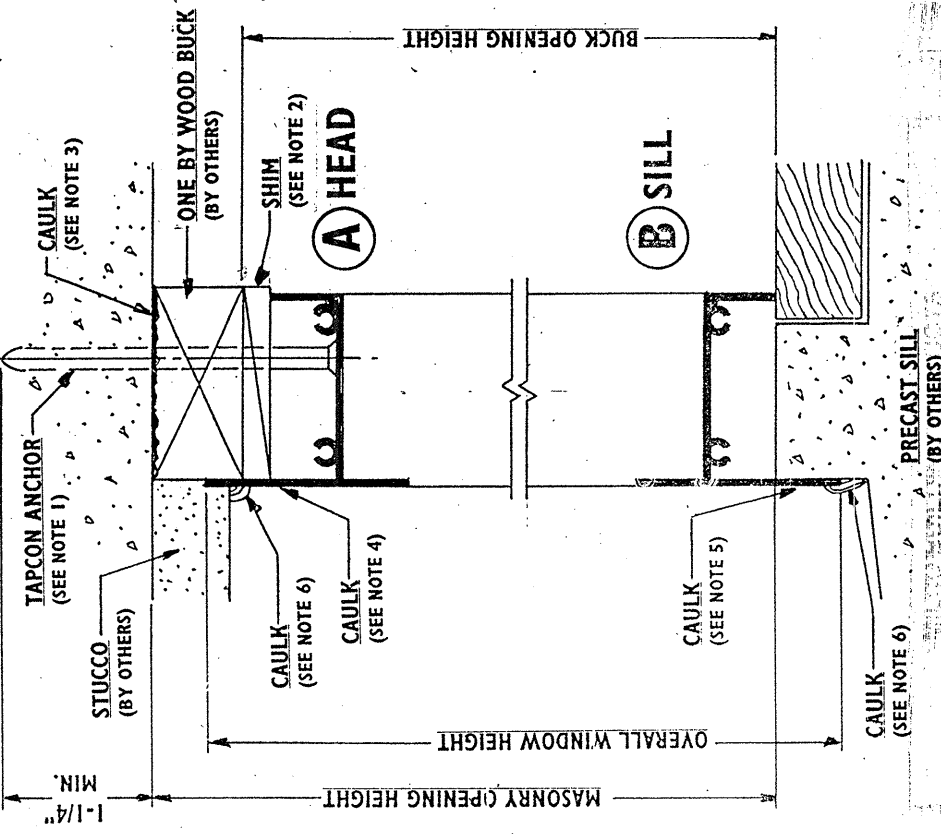
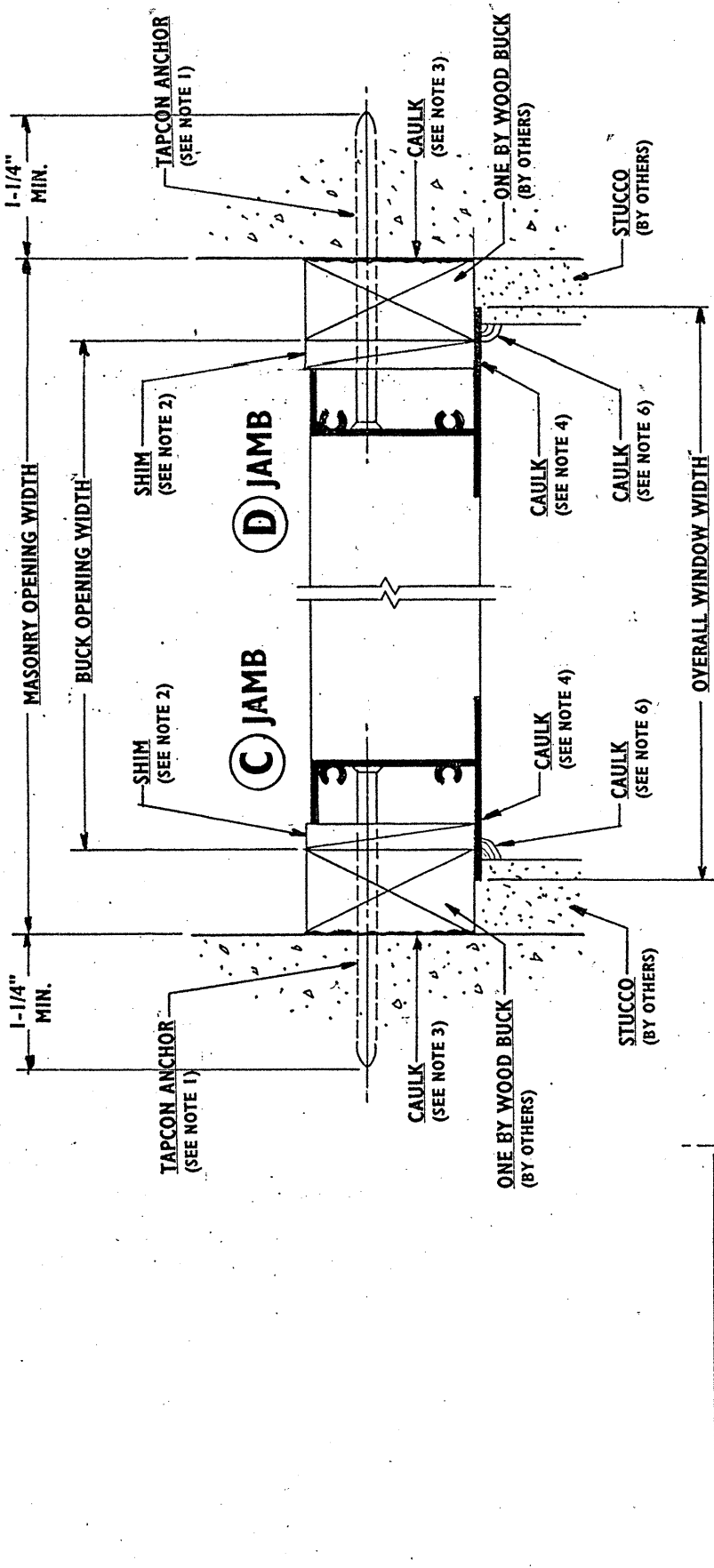


TAPCON LOCATION CHART (SEE ELEVATION)						
CALLOUT SIZE	OVERALL WINDOW SIZE	BUCK SIZE	HEAD		JAMBS	
			30-40 PSF	41-70 PSF	30-40 PSF	41-70 PSF
12	19-1/8 x 26	18-1/8 x 25	b	b	fg	fg
13	19-1/8 x 38-3/8	18-1/8 x 37-3/8	b	b	fg	fg
14	19-1/8 x 50-5/8	18-1/8 x 49-5/8	b	b	fg	fg
15	19-1/8 x 63	18-1/8 x 62	b	b	fg	fg
16	19-1/8 x 76-3/4	18-1/8 x 75-3/4	b	b	fg	fg,hi
17	26-1/2 x 26	25-1/2 x 25	b	b	fg	fg
17/2 33	26-1/2 x 38-3/8	25-1/2 x 37-3/8	b	b	fg	fg
17/2 34	26-1/2 x 50-5/8	25-1/2 x 49-5/8	b	b	fg	fg,hi
17/2 35	26-1/2 x 63	25-1/2 x 62	b	b	fg	fg,hi
17/2 36	26-1/2 x 76-3/4	25-1/2 x 75-3/4	b	b	fg	fg,hi
2824	32 x 28-7/16	31 x 27-7/16	b	b	fg	fg
2830	32 x 36-7/16	31 x 35-7/16	b	b	fg	fg
2834	32 x 40-7/16	31 x 39-7/16	b	b	fg	fg
2840	32 x 48-7/16	31 x 47-7/16	b	b	fg	fg,hi
2850	32 x 60-7/16	31 x 59-7/16	b	b	fg	fg,hi
22	37 x 26	36 x 25	b	b	fg	fg
23	37 x 38-3/8	36 x 37-3/8	b	b	fg	fg
24	37 x 50-5/8	36 x 49-5/8	b	b	fg	fg,hi
25	37 x 63	36 x 62	b	b	fg,hi	d,e,f,g,hi
26	37 x 76-3/4	36 x 75-3/4	b	b	fg,hi	d,e,f,g,hi
27	37 x 84	36 x 83	b	b	fg,j,k	fg,hi,j,k
3430	40 x 36-7/16	39 x 35-7/16	b	b	fg	fg,hi
3434	40 x 40-7/16	39 x 39-7/16	b	b	fg	fg,hi
3438	40 x 44-7/16	39 x 43-7/16	b	b	fg	fg,hi
3440	40 x 48-7/16	39 x 47-7/16	b	b	fg	fg,hi
3450	40 x 60-7/16	39 x 59-7/16	b	b	fg,hi	fg,hi
3460	40 x 72-7/16	39 x 71-7/16	b	b	fg,hi	d,e,f,g,hi
4030	48 x 36-7/16	47 x 35-7/16	b	a,c	fg	fg,hi
4034	48 x 40-7/16	47 x 39-7/16	b	a,c	fg	fg,hi
4038	48 x 44-7/16	47 x 43-7/16	b	a,c	fg	fg,hi
4040	48 x 48-7/16	47 x 47-7/16	b	a,c	fg	fg,hi
4050	48 x 60-7/16	47 x 59-7/16	b	a,c	fg,hi	fg,hi
4060	48 x 72-7/16	47 x 71-7/16	b	a,c	fg,hi	d,e,f,g,hi
32	53-1/8 x 26	52-1/8 x 25	b	a,c	fg	fg
33	53-1/8 x 38-3/8	52-1/8 x 37-3/8	b	a,c	fg	fg,hi
34	53-1/8 x 50-5/8	52-1/8 x 49-5/8	b	a,c	fg,hi	fg,hi
35	53-1/8 x 63	52-1/8 x 62	b	a,c	fg,hi	d,e,f,g,hi
36	53-1/8 x 76-3/4	52-1/8 x 75-3/4	b	a,c	fg,hi	d,e,f,g,hi
37	53-1/8 x 84	52-1/8 x 83	b	a,c	fg,hi	d,e,f,g,hi

NOTES:

1. INSTALL 3/16" DIA. TAPCON ANCHORS LOCATED AS PER CHART. TAPCON ANCHORS SHALL EMBED 1-1/4" MIN. INTO MASONRY.
2. SHIM AT TAPCON ANCHORS IF REQUIRED. SHIM NOT TO EXCEED 1/4" MAX. THICKNESS.
3. CAULK BETWEEN MASONRY AND WOOD BUCK WITH SILICONIZED ACRYLIC CAULKING OR APPROVED EQUIVALENT.
4. CAULK BEHIND HEAD AND JAMB FLANGES WITH SILICONIZED ACRYLIC CAULKING OR APPROVED EQUIVALENT.
5. CAULK BEHIND SILL FLANGE WITH YULKEM 116 ADHESIVE CAULKING OR APPROVED EQUIVALENT.
6. CAULK EXTERIOR PERIMETER OF HEAD, SILL AND JAMB FLANGES WITH SILICONIZED ACRYLIC CAULKING OR APPROVED EQUIVALENT.
7. USE NEXT SIZE LARGER FOR SIZES NOT LISTED ON CHART.
8. USE #8 SCREWS IN FACTORY SUPPLIED INSTALLATION HOLES WHICH ARE NOT DESIGNATED FOR TAPCON ANCHORS. THESE SCREWS SHALL EMBED 5/8" MIN. INTO WOOD BUCK.
9. ALL ANCHORS, SCREWS, SHIMS AND CAULKING BY OTHERS.
10. WINDOW FRAMING MATERIAL SHALL BE 6063-T5 ALUMINUM ALLOY.
11. GLASS THICKNESS SHALL MEET THE REQUIREMENTS OF ASTM E1300.



[Signature]
FLA. 18785
STRUCTURAL
 Date: 05/05/02

ROBI E. FISHER
 WM. M. MEYERS, P.E.
 Consulting Engineers
 9301 N.E. 6th Ave. C-306
 Miami Shores, FL 33158
 (305) 758-3117 557-4006 Fax 352-6287

MILCO BUILDING PRODUCTS
 Swainsboro, GA

APPROVED BY: _____
 SCALE: NONE
 DATE: 5/11/02

DRAWN BY: HMR
 REVISED: _____

INSTALLATION INSTRUCTIONS
MILCO SERIES 7000 PICTURE WINDOW

DP-50

DRAWING NUMBER
M-7000