

**EXTERIOR ELEVATION
SINGLE HUNG WINDOW**

SCALE: 3/4"=1'-0"

NIAL FIN MOUNT CONDITION IS SHOWN IN THIS ELEVATION. FOR OTHER MOUNTING OPTIONS (CLIP MOUNT), SEE DETAILS ON SHEET 2.

ALLOWABLE DESIGN PRESSURE			
MAX. FRAME WIDTH (F.W.)	MAX. FRAME HEIGHT (F.H.)	POSITIVE	NEGATIVE
35.25"	76.5"	35.0 PSF	35.0 PSF
39"	76.5"	31.6 PSF	31.6 PSF
43"	76.5"	28.7 PSF	28.7 PSF
47.5"	76.5"	25.0 PSF	25.0 PSF
35.25"	72.5"	35.0 PSF	35.0 PSF
39"	72.5"	33.3 PSF	33.3 PSF
43"	72.5"	30.3 PSF	30.3 PSF
47.5"	72.5"	26.4 PSF	26.4 PSF
35.25"	68.5"	35.0 PSF	35.0 PSF
39"	68.5"	35.0 PSF	35.0 PSF
43"	68.5"	32.1 PSF	32.1 PSF
47.5"	68.5"	27.9 PSF	27.9 PSF
35.25"	64.5"	35.0 PSF	35.0 PSF
39"	64.5"	35.0 PSF	35.0 PSF
43"	64.5"	34.0 PSF	34.0 PSF
47.5"	64.5"	29.7 PSF	29.7 PSF
43"	60.5"	35.0 PSF	35.0 PSF
47.5"	60.5"	31.6 PSF	31.6 PSF

ALL DIMENSIONS ARE +/-1/2"

MULLION NOTE:
THESE WINDOWS MAY BE MULLED TOGETHER PROVIDING THEY ARE DONE SO PER MULLION DRAWING NO. 1110 BY W. W. SCHAEFER ENGINEERING & CONSULTING, P.A. OR THE MULLIONS USED ARE CERTIFIED BY A REGISTERED ENGINEER.

CORNER CONSTRUCTION:
1. ALL CORNERS ARE MITERED AND FULLY WELDED

- GENERAL NOTES**
1. THESE WINDOW SYSTEMS HAVE BEEN TESTED, ANALYZED AND APPROVED FOR DESIGN PRESSURES NOT TO EXCEED THOSE SHOWN IN THE "ALLOWABLE DESIGN LOADS" TABLE.
 2. BUCKING, OPENINGS & BUCKING-FASTENERS MUST BE PROPERLY DESIGNED & INSTALLED TO TRANSFER WIND LOADS TO THE STRUCTURE.
 3. ALL HARDWARE & FASTENERS SHALL BE IN ACCORDANCE WITH THESE DRAWINGS & MAY NOT VARY UNLESS SPECIFICALLY MENTIONED ON THE DRAWINGS.
 4. THESE WINDOW SYSTEMS HAVE BEEN DESIGNED IN ACCORDANCE WITH & MEET THE REQUIREMENTS OF THE FLORIDA BUILDING CODE (F.B.C.).
 5. THESE WINDOWS HAVE BEEN TESTED IN ACCORDANCE WITH AAMA, NWWDA 101 AND I.S. 2-97 "VOLUNTARY SPECIFICATIONS FOR ALUMINUM, VINYL (PVC) AND WOOD WINDOWS AND GLASS DOORS." REFERENCE TEST REPORT NO.'S 06-30335.01, BY ARCHITECTURAL TESTING, INC. & 180-6106 BY STORK TWIN CITY TESTING, INC.
 6. TESTS COMPLETED INCLUDE AIR INFILTRATION PER ASTM E283-91, WATER RESISTANCE PER ASTM E547-96, UNIFORM LOAD STRUCTURAL PER ASTM 330-96 AND FORCED ENTRY PER ASTM F 588-97.
 7. THESE WINDOW SYSTEMS ARE NON-IMPACT RATED AND MUST BE SHUTTERED WHERE REQUIRED BY CODE.
 8. ALL WINDOW SIZES AND CONDITIONS SPECIFIED HAVE BEEN VERIFIED WITH THE TEST REPORTS. ALL COMPONENTS HAVE BEEN CHECKED, INCLUDING GLASS TO ASTM E-1300-00, TO SUPPORT THE LOADS AS SPECIFIED IN THE LOAD TABLE.
 9. GLASS USED WITH ALL TESTED UNITS WAS 3/4" I.G. WITH 1/8" ANNEALED GLASS PANES.

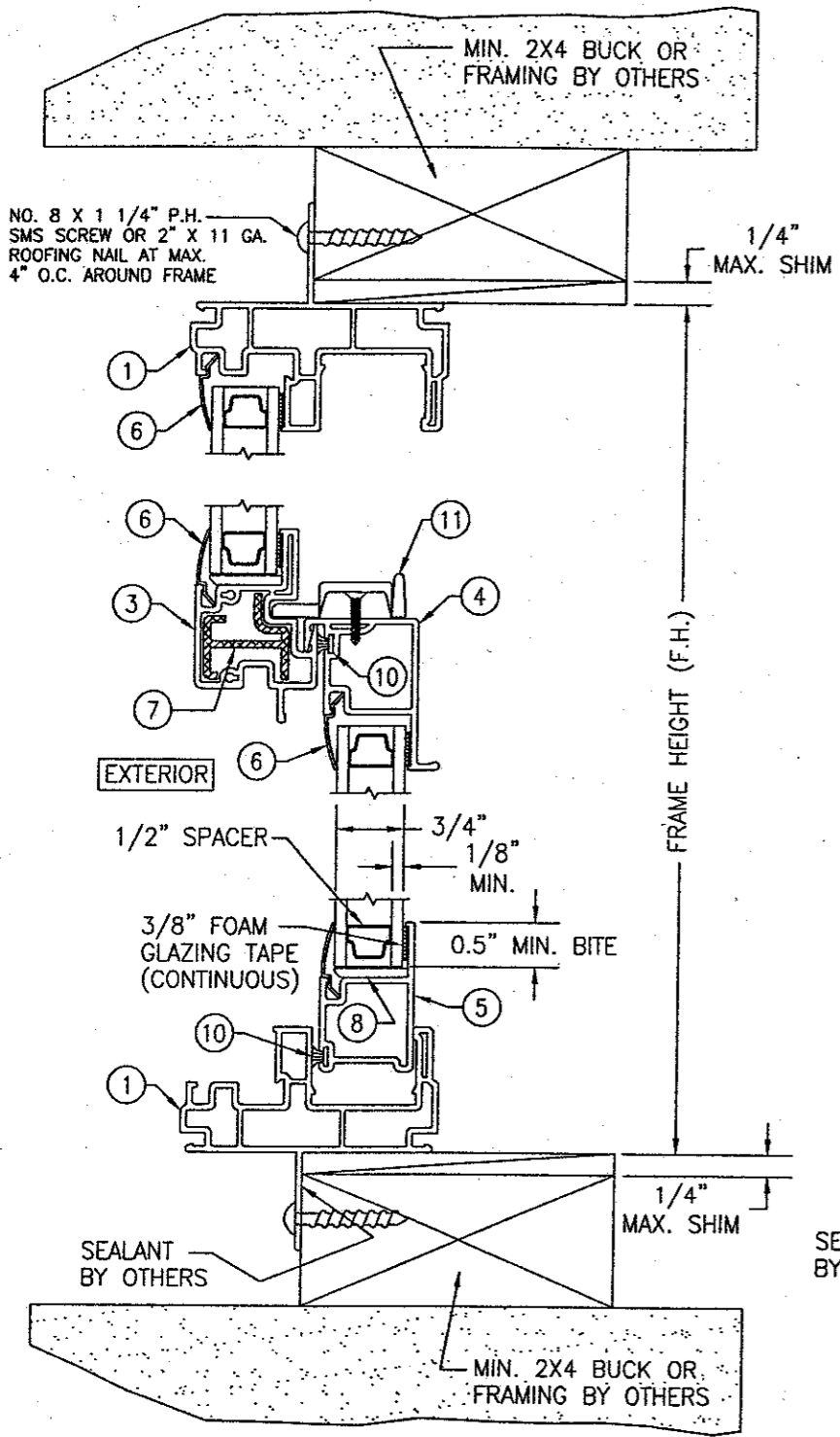
IF CLIP MOUNTED, THE CLIPS MUST BE PLACED WITHIN 6" OF THE FRAME CORNERS AND SPACED MAX. 16" O.C.

FRAME ANCHOR REQUIREMENTS TABLE			
FIN SCREWS			
OPENING TYPE (SUBSTRATE)	JAMB TO OPENING FASTENER TYPE	MINIMUM EMBEDMENT	MINIMUM EDGE DIST.
2X_ WOOD FRAME OR BUCK	2" X 11GA. ROOFING NAILS	1 7/8"	1/2"
2X_ WOOD FRAME OR BUCK	NO. 8 SMS SCREW	1 1/8"	1/2"
* SHEAR/CLIP SCREWS			
2X_ WOOD FRAME OR BUCK	NO. 8 SMS SCREW	1 1/4"	3/4"
CMU/CONCRETE	(1) 3/16" CONCRETE SCREWS	1 1/4"	2"

(1) CONCRETE SCREWS SHALL BE ITW RAMSET/RED HEAD OR ELCO TAPCONS, HILTI KWIK-CON II OR POWERS RAWL TAPPER. (HARDENED STEEL OR S.S.)

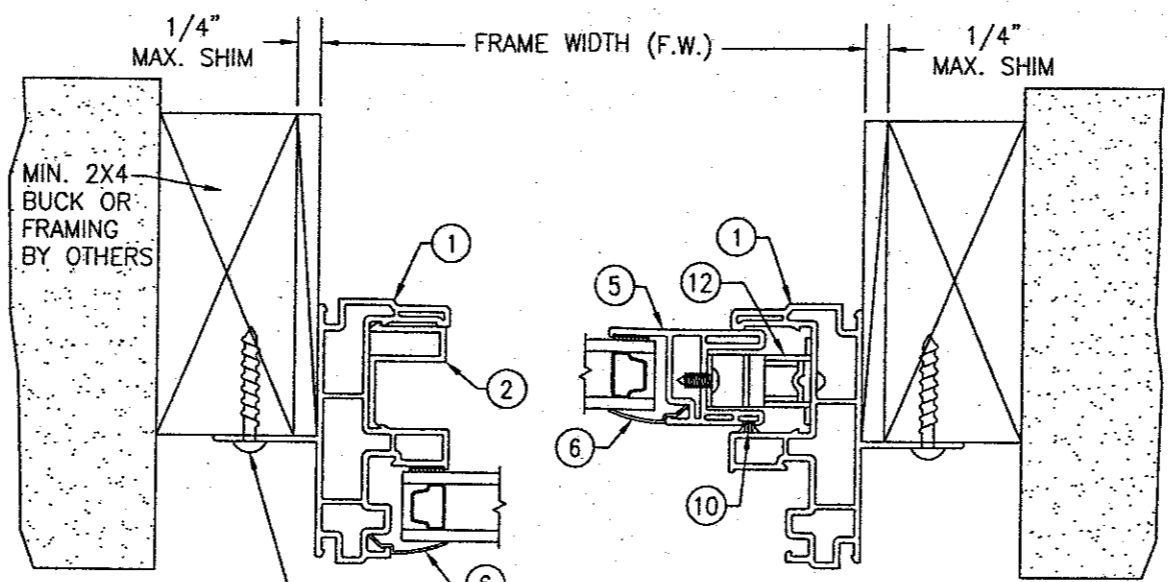
* ANCHOR NOTE: FRAME MAY BE EITHER FIN OR CLIP MOUNTED TO THE OPENING. WHEN FIN MOUNTED, THE ATTACHMENT OF THE FIN SHALL BE TO A MIN. 2X4 NO. 3 SOUTHERN PINE WOOD MEMBER (FRAMING OR BUCK). WHEN CLIP MOUNTED, THE ATTACHMENT MAY BE TO A MIN NO. 3 SOUTHERN PINE BUCK OR FRAMING MEMBER OR DIRECTLY TO A BLOCK/CONCRETE WALL (USE NO. 8 SCREWS WHEN TO WOOD AND 3/16" CONCRETE SCREWS WHEN TO BLOCK/CONCRETE). IF THE OPENING CONDITIONS REQUIRE THAT A SPACER BE USED BETWEEN THE FRAME AND SUPPORTING SUBSTRATE, THE SPACER MUST BE A CONTINUOUS WOOD MEMBER AND THE WINDOW FRAME MUST BE CLIP MOUNTED TO THE OPENING WITH THE CLIP SCREWS RUNNING THROUGH THE SPACER AND INTO THE SUPPORTING SUBSTRATE.

DRAWN BY: W.W.S.	CHECKED BY: W.W.S.
PLOT: 1=16	DATE: 07/08/02
DATE	BY
REVISION DESCRIPTION	NO.
DRAWING TITLE VINYL BUILDERS SERIES SINGLE HUNG (VBSH) NON-IMPACT WINDOWS	
MANUFACTURER HURD MILLWORK CO., INC. 575 S. WHELEN AVE. MEDFORD, WI 54451 800-433-4873	
CONSULTANTS W. W. SCHAEFER ENGINEERING & CONSULTING, P.A. 600 SANDTREE DRIVE, SUITE 203B PALM BEACH GARDENS, FL 33403 PHONE: 561-775-4902 FAX: 561-775-4903	
CERTIFICATION WARREN W. SCHAEFER, P.E. P.E. NO. 44135	
DRAWING NO. 1126	REV.
SHEET NO. 1	OF 3



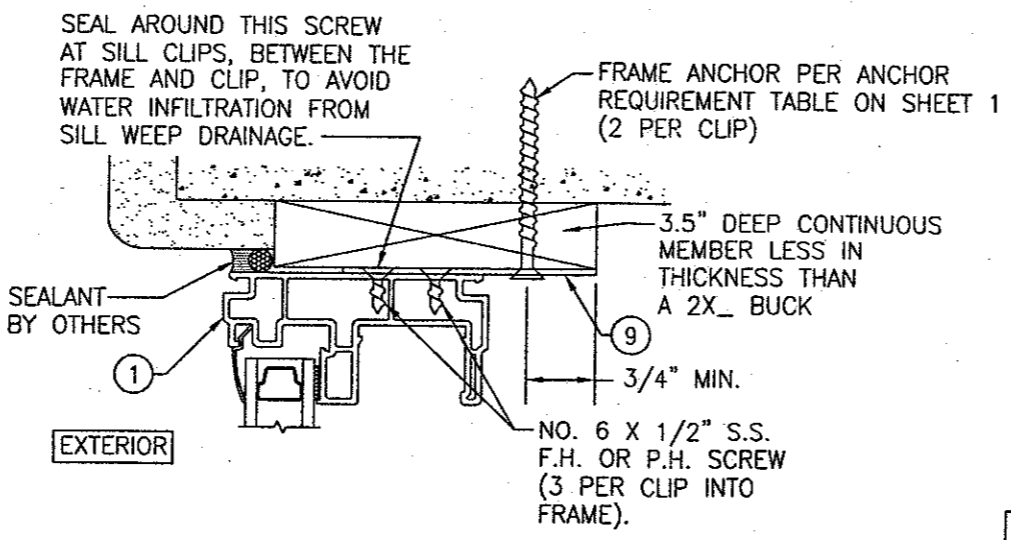
SECTION A
SCALE: 1/2 FULL

NOTE: FINISHES ARE TO BE AS REQ'D BY OTHERS.



SECTION B
SCALE: 1/2 FULL
(TOP SECTION)

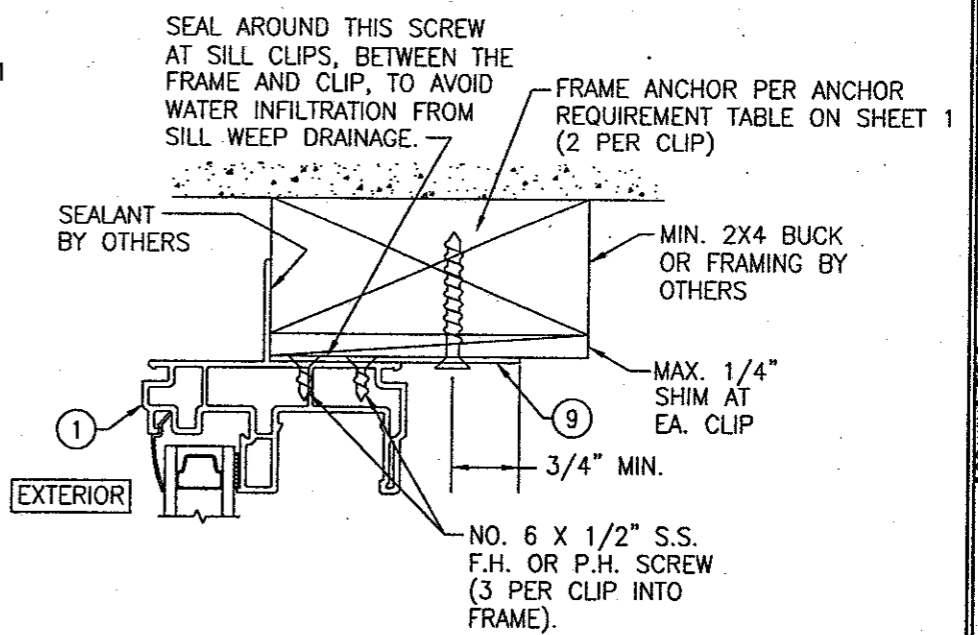
SECTION C
SCALE: 1/2 FULL
(BOTTOM SECTION)



OPTIONAL DIRECT MOUNT DETAIL

HEAD JAMB SHOWN; OTHER JAMBS SAME
SEE SECTIONS FOR DETAIL NOT SHOWN
THIS DETAIL ALSO APPLIES FOR FRAMED OR BUCKED OPENINGS WHEN A SPACER SECTION MUST BE USED TO BUILD OUT THE FRAMED/BUCKED OPENING.

NOTE: WHEN CLIP MOUNTED, THE FIN MAY BE REMOVED.

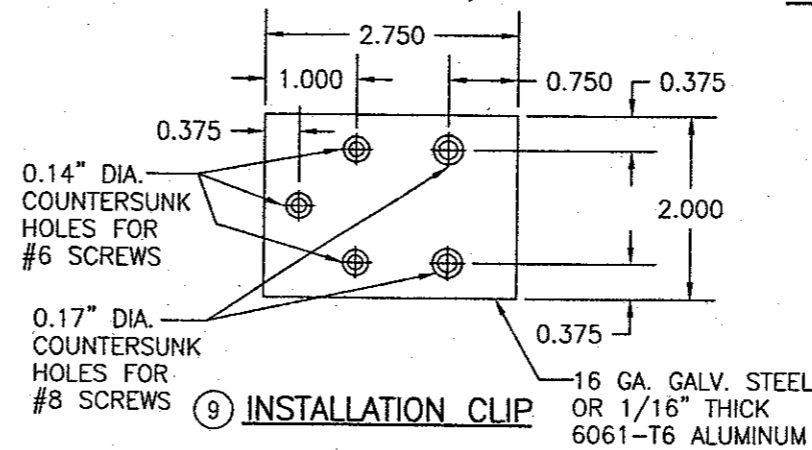
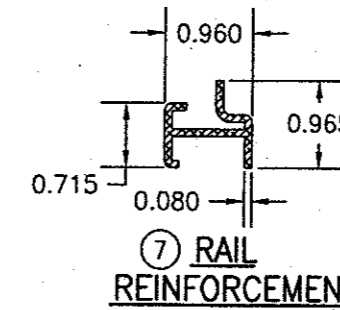
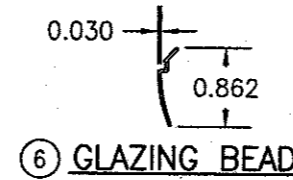
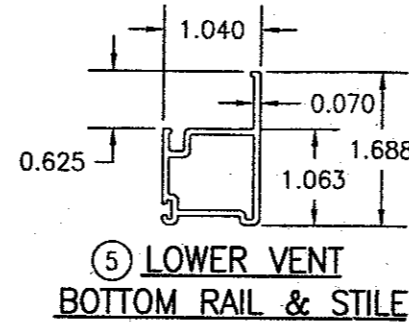
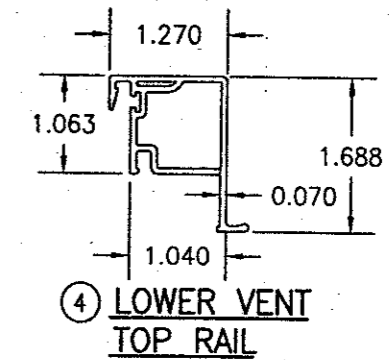
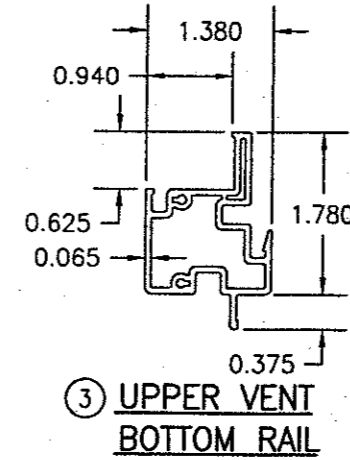
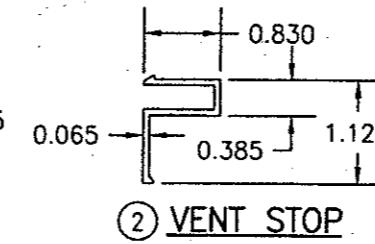
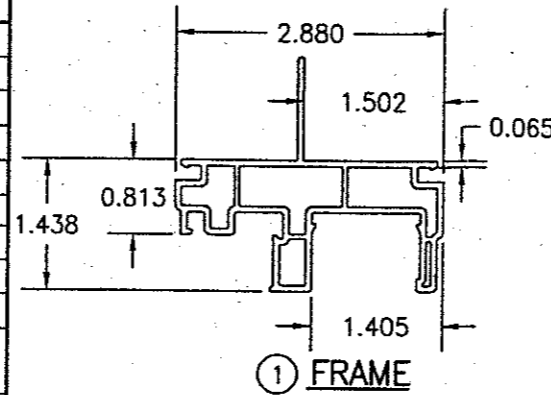


OPTIONAL CLIP MOUNT DETAIL

HEAD JAMB SHOWN; OTHER JAMBS SAME
SEE SECTIONS FOR DETAIL NOT SHOWN

DRAWN BY: W.S.		CHECKED BY: W.S.	
PLOT: 1-2		DATE: 07/08/02	
DATE	BY	REVISION DESCRIPTION	NO.
DRAWING TITLE: VINYL BUILDERS SERIES SINGLE HUNG (VBSH) NON-IMPACT WINDOWS			
CONSULTANTS: W. W. SCHAEFER ENGINEERING & CONSULTING, P.A.		MANUFACTURER: HURD MILLWORK CO., INC.	
600 SANDTREE DRIVE, SUITE 203B PALM BEACH GARDENS, FL 33403 PHONE: 561-775-4902 FAX: 561-775-4903		575 S. WHELEN AVE. MEDFORD, WI 54451 800-433-4873	
CERTIFICATION: WARREN W. SCHAEFER, P.E. P.E. NO. 44135			
DRAWING NO. 1126		REV.	
SHEET NO. 2		OF 3	

ITEM #	PART	ITEM DESCRIPTION	MANUFACTURER/NOTES
PARTS			
1	7254	FRAME	PVC
2	6571	VENT STOP	PVC
3	7255	UPPER VENT BOTTOM RAIL	PVC
4	7256	LOWER VENT TOP RAIL	PVC
5	7258	LOWER VENT STILES/BOTTOM RAIL	PVC
6	6177	GLAZING BEAD	PVC
7	7255.1	RAIL REINFORCEMENT	6063-T5 ALUMINUM
8	6555	GLASS SETTING BLOCK	PVC
9	-	INSTALLATION CLIP (WITHIN 6" OF CORNERS & MAX. 16" O.C.)	16 GA. GALVANIZED STEEL OR 1/16" 6061-T6 ALUMINUM
SEALS			
10	18725058	WEATHER SEAL	AMESBURY
HARDWARE & MISCELLANEOUS			
11	7538-186	SWEEP LOCK	ALLEN STEVENS
12	-	BALANCE ASSEMBLY	CALDWELL



DRAWN BY:	W.W.S.	CHECKED BY:	W.W.S.
PLOT:	1-2	DATE:	07/08/02
NO.	REVISION DESCRIPTION	BY	DATE

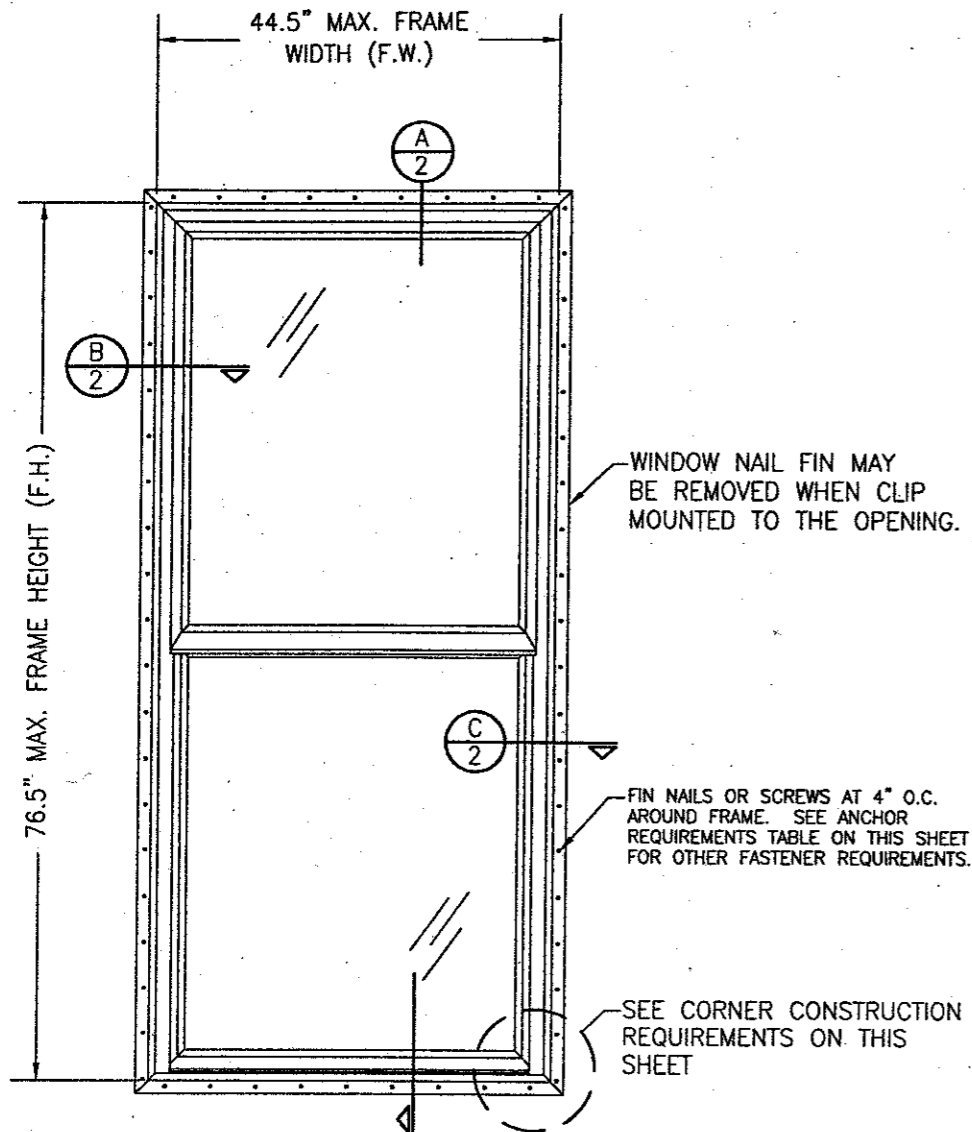
DRAWING TITLE
VINYL BUILDERS SERIES SINGLE HUNG (VBSH) NON-IMPACT WINDOWS

CONSULTANTS
W. W. SCHAEFER ENGINEERING & CONSULTING, P.A.
800 SANDTREE DRIVE, SUITE 203B
PALM BEACH GARDENS, FL 33403
PHONE: 561-775-4902 FAX: 561-775-4903

MANUFACTURER
HURD MILLWORK CO., INC.
575 S. WHELEN AVE.
MEDFORD, WI 54451
800-433-4873

CERTIFICATION
WARREN W. SCHAEFER, P.E.
P.E. NO. 44135

DRAWING NO.	REV.
1126	
SHEET NO.	
3	OF 3



**EXTERIOR ELEVATION
SINGLE HUNG WINDOW**

SCALE: 3/4"=1'-0"

NIAL FIN MOUNT CONDITION IS SHOWN IN THIS ELEVATION.
FOR OTHER MOUNTING OPTIONS (CLIP MOUNT), SEE
DETAILS ON SHEET 2.

ALLOWABLE DESIGN PRESSURE	
POSITIVE	NEGATIVE
30 PSF	30 PSF

IF CLIP MOUNTED, THE CLIPS MUST BE PLACED WITHIN 6" OF THE FRAME CORNERS AND SPACED MAX. 16" O.C.

MULLION NOTE:
THESE WINDOWS MAY BE MULLED TOGETHER PROVIDING THEY ARE DONE SO PER MULLION DRAWING NO. 1110 BY W. W. SCHAEFER ENGINEERING & CONSULTING, P.A. OR THE MULLIONS USED ARE CERTIFIED BY A REGISTERED ENGINEER.

CORNER CONSTRUCTION:
1. ALL CORNERS ARE MITERED AND FULLY WELDED

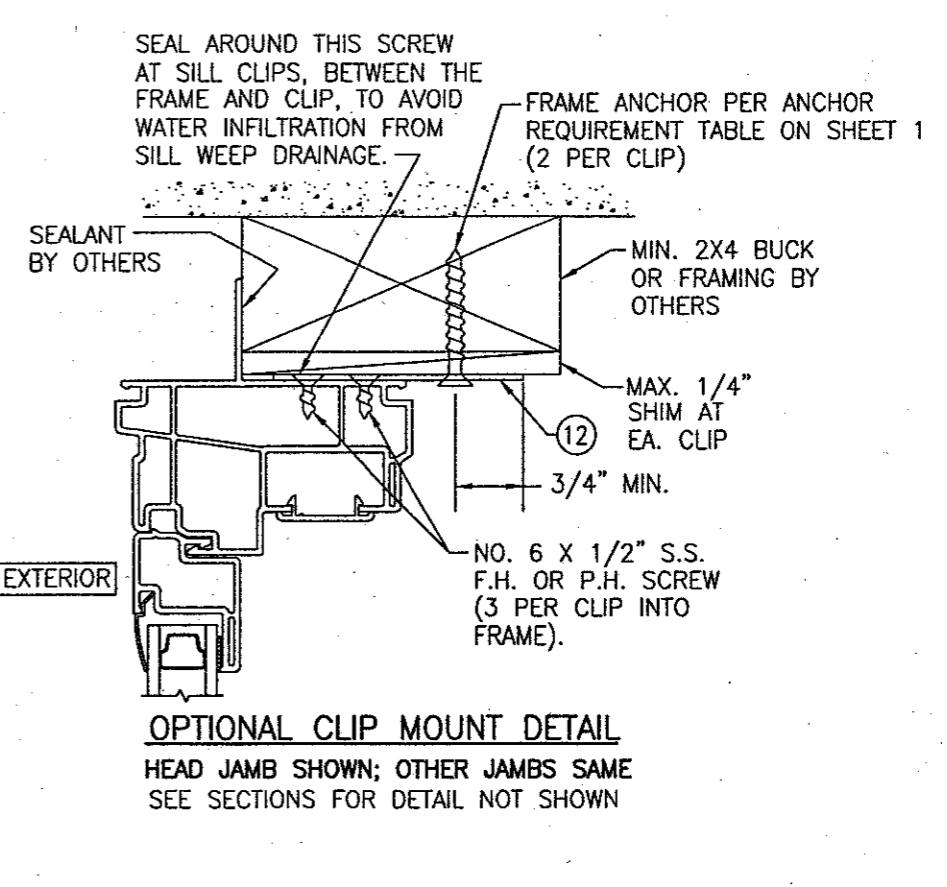
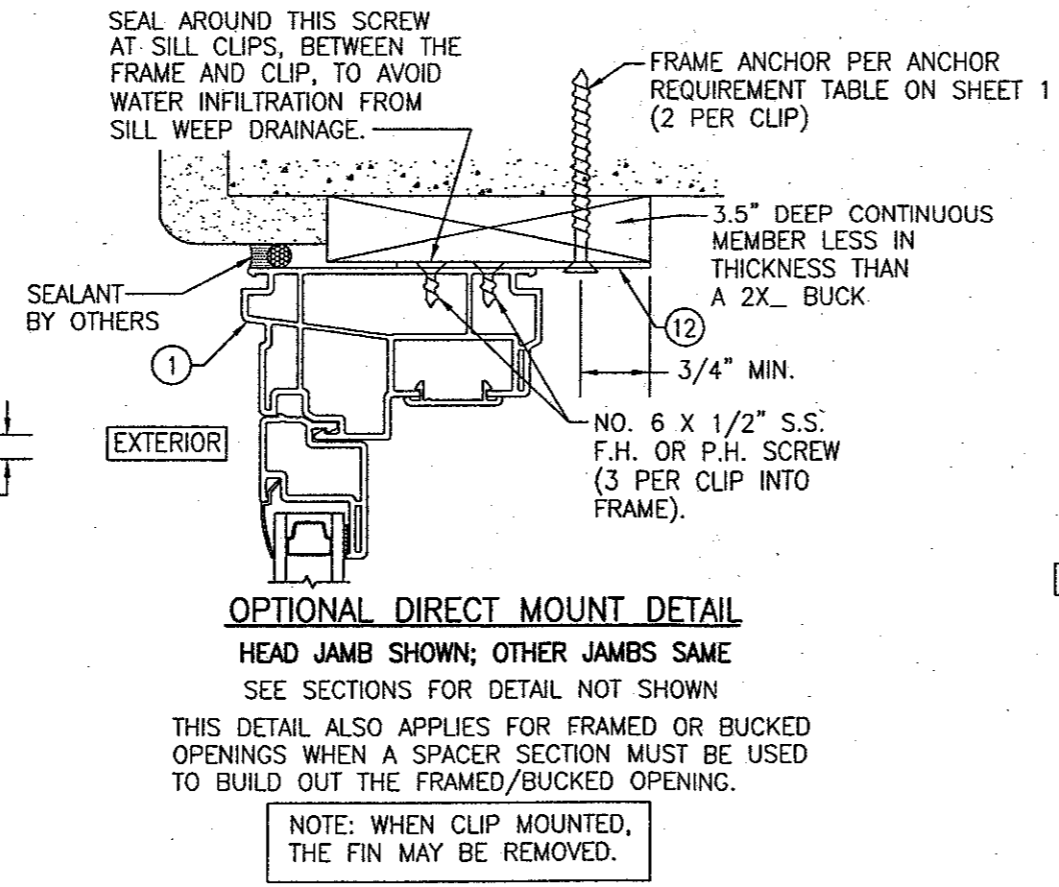
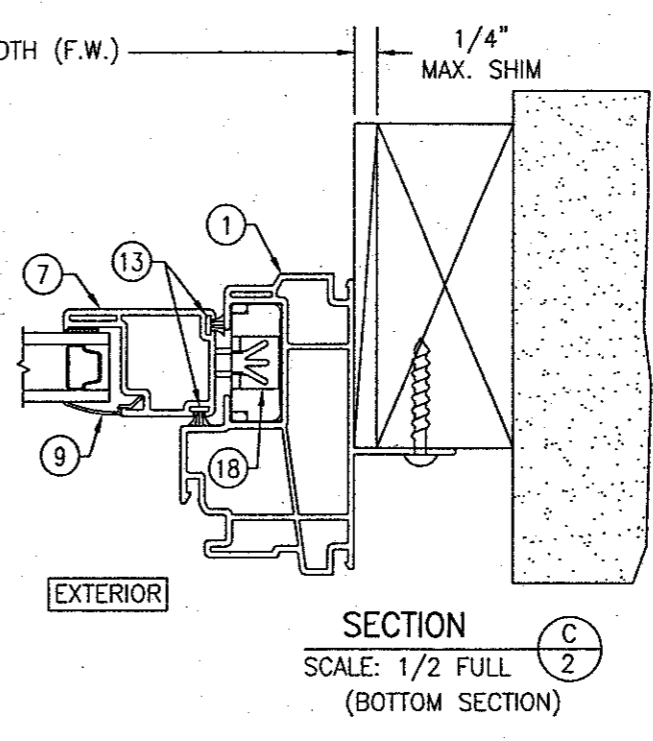
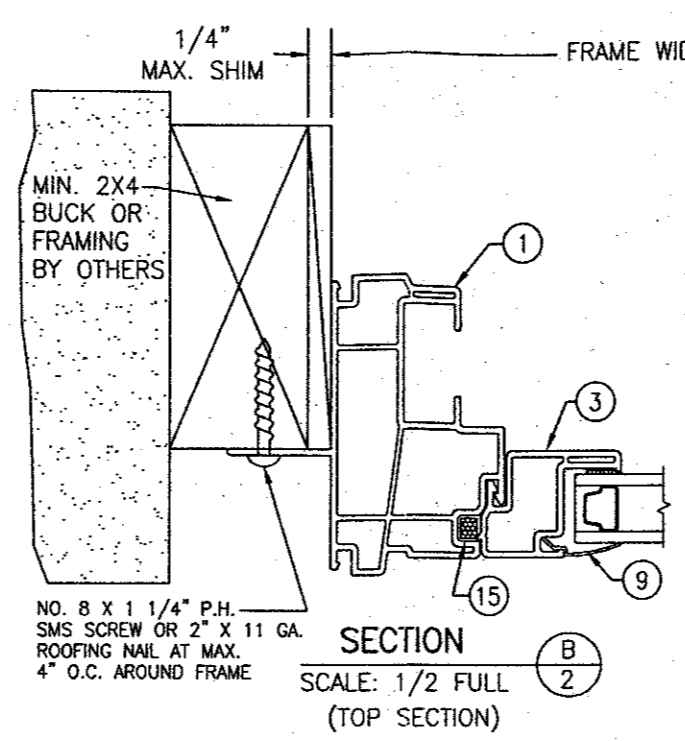
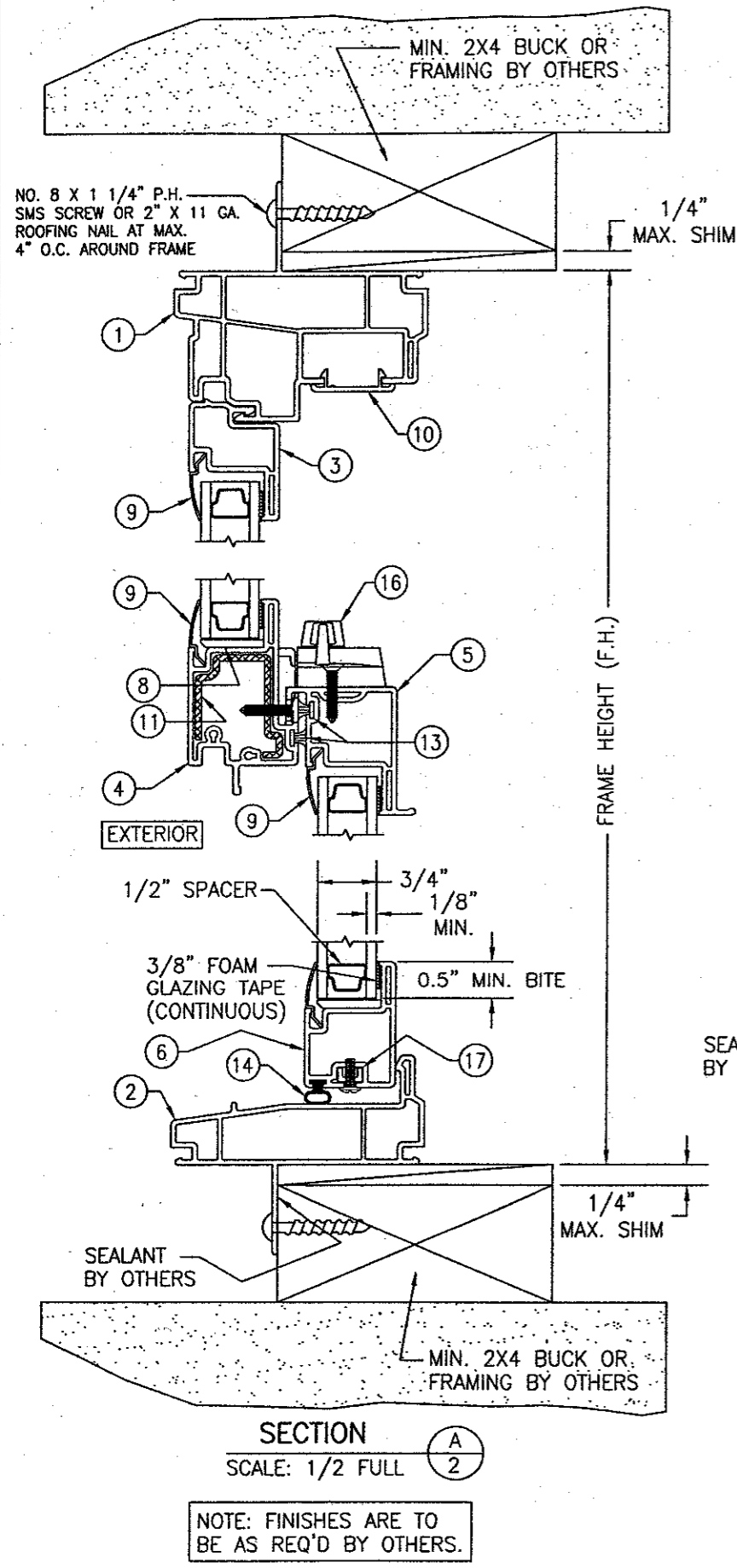
- GENERAL NOTES**
1. THESE WINDOW SYSTEMS HAVE BEEN TESTED, ANALYZED AND APPROVED FOR DESIGN PRESSURES NOT TO EXCEED THOSE SHOWN IN THE "ALLOWABLE DESIGN LOADS" TABLE.
 2. BUCKING, OPENINGS & BUCKING FASTENERS MUST BE PROPERLY DESIGNED & INSTALLED TO TRANSFER WIND LOADS TO THE STRUCTURE.
 3. ALL HARDWARE & FASTENERS SHALL BE IN ACCORDANCE WITH THESE DRAWINGS & MAY NOT VARY UNLESS SPECIFICALLY MENTIONED ON THE DRAWINGS.
 4. THESE WINDOW SYSTEMS HAVE BEEN DESIGNED IN ACCORDANCE WITH & MEET THE REQUIREMENTS OF THE FLORIDA BUILDING CODE (F.B.C.).
 5. THESE WINDOWS HAVE BEEN TESTED IN ACCORDANCE WITH AAMA, NWWDA 101 AND I.S. 2-97 "VOLUNTARY SPECIFICATIONS FOR ALUMINUM, VINYL (PVC) AND WOOD WINDOWS AND GLASS DOORS." REFERENCE TEST REPORT NO. 180-6124, BY STORK TWIN CITY TESTING, INC.
 6. TESTS COMPLETED INCLUDE AIR INFILTRATION PER ASTM E283-91, WATER RESISTANCE PER ASTM E547-96, UNIFORM LOAD STRUCTURAL PER ASTM 330-96 AND FORCED ENTRY PER ASTM F 588-97.
 7. THESE WINDOW SYSTEMS ARE NON-IMPACT RATED AND MUST BE SHUTTERED WHERE REQUIRED BY CODE.
 8. ALL WINDOW SIZES AND CONDITIONS SPECIFIED HAVE BEEN VERIFIED WITH THE TEST REPORTS. ALL COMPONENTS HAVE BEEN CHECKED, INCLUDING GLASS TO ASTM E-1300-00, TO SUPPORT THE LOADS AS SPECIFIED IN THE LOAD TABLE.
 9. GLASS USED WITH ALL TESTED UNITS WAS 3/4" I.G. WITH 1/8" ANNEALED GLASS PANES.

FRAME ANCHOR REQUIREMENTS TABLE			
FIN SCREWS			
OPENING TYPE (SUBSTRATE)	JAMB TO OPENING FASTENER TYPE	MINIMUM EMBEDMENT	MINIMUM EDGE DIST.
2X_ WOOD FRAME OR BUCK	2" X 11GA. ROOFING NAILS	1 7/8"	1/2"
2X_ WOOD FRAME OR BUCK	NO. 8 SMS SCREW	1 1/8"	1/2"
* SHEAR/CLIP SCREWS			
2X_ WOOD FRAME OR BUCK	NO. 8 SMS SCREW	1 1/4"	3/4"
CMU/CONCRETE	(1) 3/16" CONCRETE SCREWS	1 1/4"	2"

(1) CONCRETE SCREWS SHALL BE ITW RAMSET/RED HEAD OR ELCO TAPCONS, HILTI KWIK-CON II OR POWERS RAWL TAPPER. (HARDENED STEEL OR S.S.)

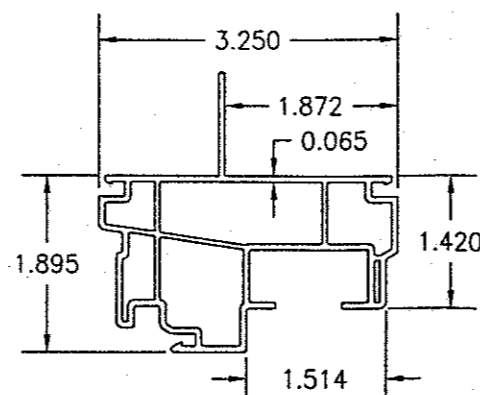
* ANCHOR NOTE: FRAME MAY BE EITHER FIN OR CLIP MOUNTED TO THE OPENING. WHEN FIN MOUNTED, THE ATTACHMENT OF THE FIN SHALL BE TO A MIN. 2X4 NO. 3 SOUTHERN PINE WOOD MEMBER (FRAMING OR BUCK). WHEN CLIP MOUNTED, THE ATTACHMENT MAY BE TO A MIN NO. 3 SOUTHERN PINE BUCK OR FRAMING MEMBER OR DIRECTLY TO A BLOCK/CONCRETE WALL (USE NO. 8 SCREWS WHEN TO WOOD AND 3/16" CONCRETE SCREWS WHEN TO BLOCK/CONCRETE). IF THE OPENING CONDITIONS REQUIRE THAT A SPACER BE USED BETWEEN THE FRAME AND SUPPORTING SUBSTRATE, THE SPACER MUST BE A CONTINUOUS WOOD MEMBER AND THE WINDOW FRAME MUST BE CLIP MOUNTED TO THE OPENING WITH THE CLIP SCREWS RUNNING THROUGH THE SPACER AND INTO THE SUPPORTING SUBSTRATE.

DRAWN BY: W.W.S.	CHECKED BY: W.W.S.
PLOT: 1-16	DATE: 07/08/02
DATE	
BY	
REVISION DESCRIPTION	
NO.	
DRAWING TITLE VINYL PREMIUM SERIES SINGLE HUNG (VPSH) NON-IMPACT WINDOWS	
MANUFACTURER HURD MILLWORK CO., INC. 575 S. HELEN AVE. MEDFORD, WI 54451 800-433-4873	
CONSULTANTS W. W. SCHAEFER ENGINEERING & CONSULTING, P.A. 600 SANDTREE DRIVE, SUITE 203B PALM BEACH GARDENS, FL 33403 PHONE: 561-775-4902 FAX: 561-775-4903	
CERTIFICATION JUL 18 2002 WARREN W. SCHAEFER, P.E. P.E. NO. 44135	
DRAWING NO. 1127	REV.
SHEET NO. 1	OF 3

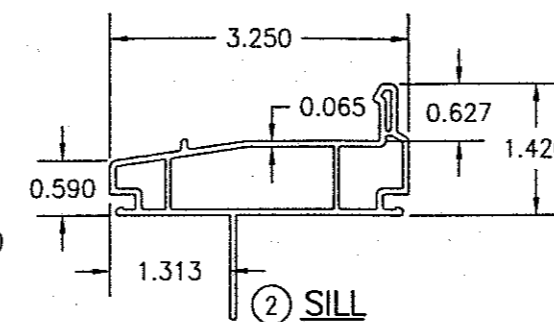


DRAWN BY: W.W.S.		CHECKED BY: W.W.S.	
PLOT: 1-2		DATE: 07/08/02	
DATE	BY	REVISION DESCRIPTION	NO.
DRAWING TITLE VINYL PREMIUM SERIES SINGLE HUNG (VPSH) NON-IMPACT WINDOWS			
MANUFACTURER HURD MILLWORK CO., INC. 575 S. WHELEN AVE. MEDFORD, WI 54451 800-433-4873			
CONSULTANTS W. W. SCHAEFER ENGINEERING & CONSULTING, P.A. 600 SANDTREE DRIVE, SUITE 203B PALM BEACH GARDENS, FL 33403 PHONE: 561-775-4902 FAX: 561-775-4903			
CERTIFICATION WARREN W. SCHAEFER, P.E. P.E. NO. 44135			
DRAWING NO. 1127		REV.	
SHEET NO. 2		OF 3	

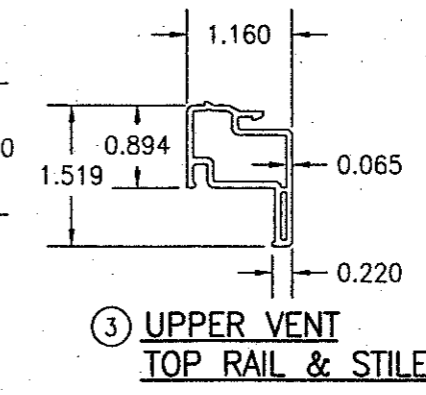
ITEM #	PART	ITEM DESCRIPTION	MANUFACTURER/NOTES
PARTS			
1	7247	FRAME	PVC
2	7248	SILL	PVC
3	7253	UPPER VENT TOP RAIL & STILE	PVC
4	7249	UPPER VENT BOTTOM RAIL	PVC
5	7250	LOWER VENT TOP RAIL	PVC
6	7252	LOWER VENT BOTTOM RAIL	PVC
7	7251	LOWER VENT STILE	PVC
8	6555	GLASS SETTING BLOCK	PVC
9	6177	GLAZING BEAD	PVC
10	7057	POCKET COVER (SILL)	PVC
11	7249.1	RAIL REINFORCEMENT	6063-T5 ALUMINUM
12	-	INSTALLATION CLIP (WITHIN 6" OF CORNERS & MAX. 16" O.C.)	16 GA. GALVANIZED STEEL OR 1/16" 6061-T6 ALUMINUM
SEALS			
13	18725058	WEATHER SEAL	AMESBURY 18758GYQB
14	32015	BULB WEATHER SEAL	AMESBURY XC-1081
15	-	FOAM INSULATION	
HARDWARE & MISCELLANEOUS			
16	-	CAM LOCK	TRUTH #17.23
17	265A	PIVOT BAR	BSI
18	728C	PIVOT SHOE	BSI



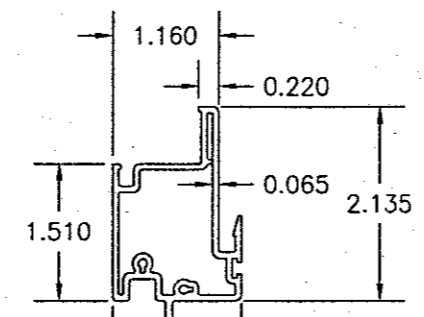
① FRAME



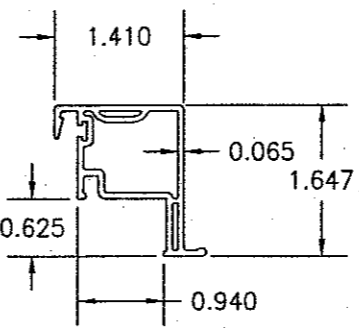
② SILL



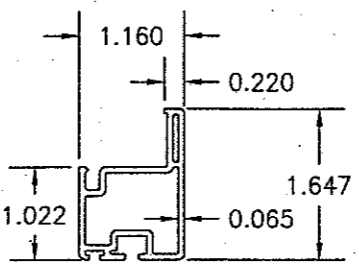
③ UPPER VENT TOP RAIL & STILE



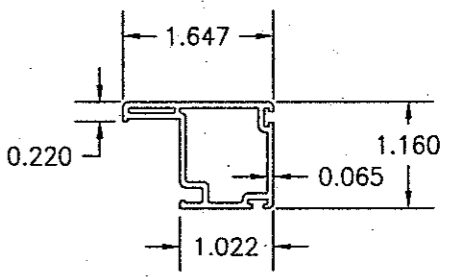
④ UPPER VENT BOTTOM RAIL



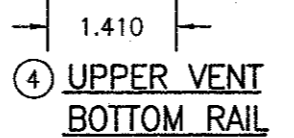
⑤ LOWER VENT TOP RAIL



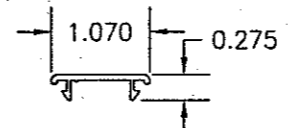
⑥ LOWER VENT BOTTOM RAIL



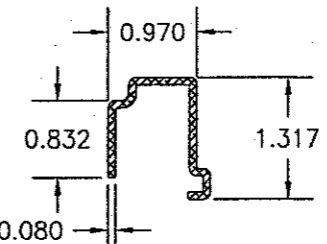
⑦ LOWER VENT STILE



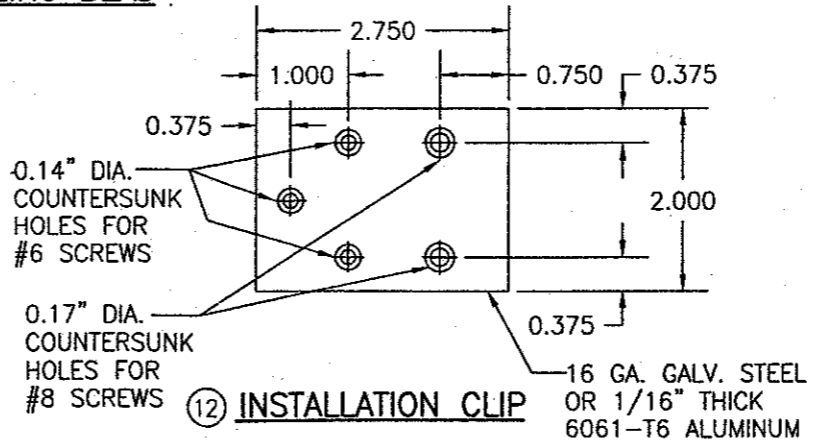
⑨ GLAZING BEAD




⑩ POCKET COVER



⑪ RAIL REINFORCEMENT



⑫ INSTALLATION CLIP

DRAWN BY: W.W.S.		CHECKED BY: W.W.S.	
PLOT: 1=2		DATE: 07/08/02	
DATE	BY	REVISION DESCRIPTION	NO.
DRAWING TITLE			
VINYL PREMIUM SERIES SINGLE HUNG (VPSH) NON-IMPACT WINDOWS			
CONSULTANTS		MANUFACTURER	
W. W. SCHAEFER ENGINEERING & CONSULTING, P.A.		HURD MILLWORK CO., INC.	
600 SANDTREE DRIVE, SUITE 203B PALM BEACH GARDENS, FL 33403 PHONE: 561-775-4902 FAX: 561-775-4903		575 S. WHELEN AVE. MEDFORD, WI 54451 800-433-4873	
CERTIFICATION			
 WARREN W. SCHAEFER, P.E. P.E. NO. 44135			
DRAWING NO.		REV.	
1127			
SHEET NO.			
3 OF 3			