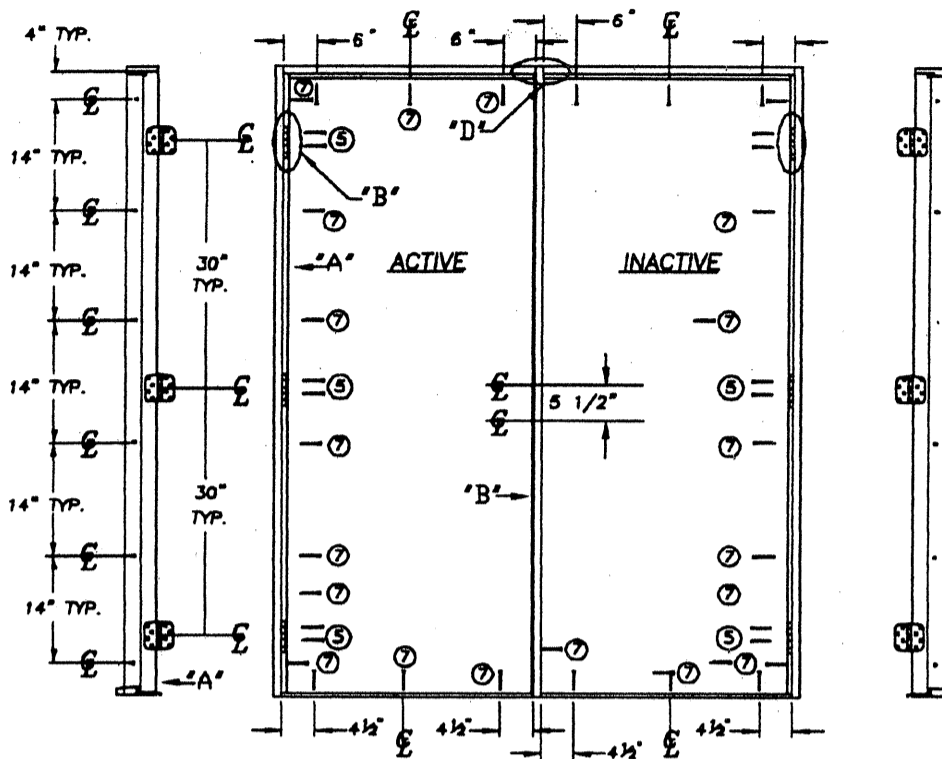
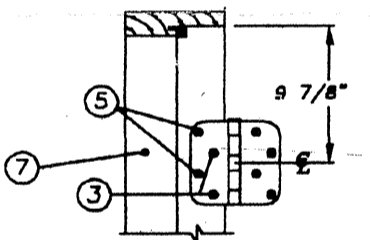


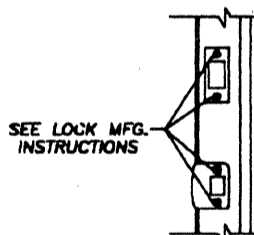
FINAL ANCHORING OF A WOOD FRAME UP TO 6'0" X 6'8"
DOUBLE OUTSWING UNIT
PRODUCT ACCEPTANCE No.: DDO223



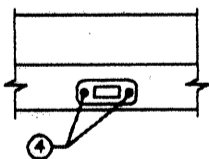
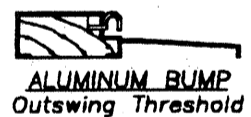
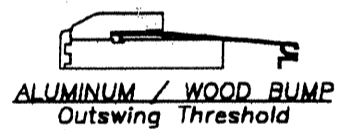
SCREW SCHEDULE	
①	#10 X 5/8" PHILLIPS FLAT HEAD
②	#10 X 1 3/4" PHILLIPS FLAT HEAD
③	#10 X 2" PHILLIPS FLAT HEAD
④	#10 X 3" PHILLIPS FLAT HEAD



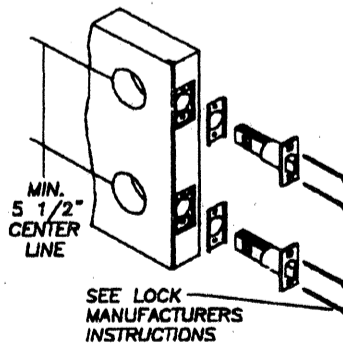
"B" HINGE DETAIL



"C" LATCH DETAIL



"D" ASTRAGAL PLATE



Size: up to 6'0" x 6'8"	Product Acceptance No: DDO-223				
	Outswing (wood jamb)		Configuration: XX		
	4'0"	4'8"	5'0"	5'4"	6'0"
Double Opaque	+74 -82	+64 -70	+60 -66	+56 -61	+50 -53
Double Glazed (Door does not meet Missile Impact) Test # 210-2024, 210-1993	+74 -74	+64 -64	+60 -60	+56 -56	+50 -50

Mfg. by: Nan Ya Plastics / Plastpro Livingston, NJ 07039