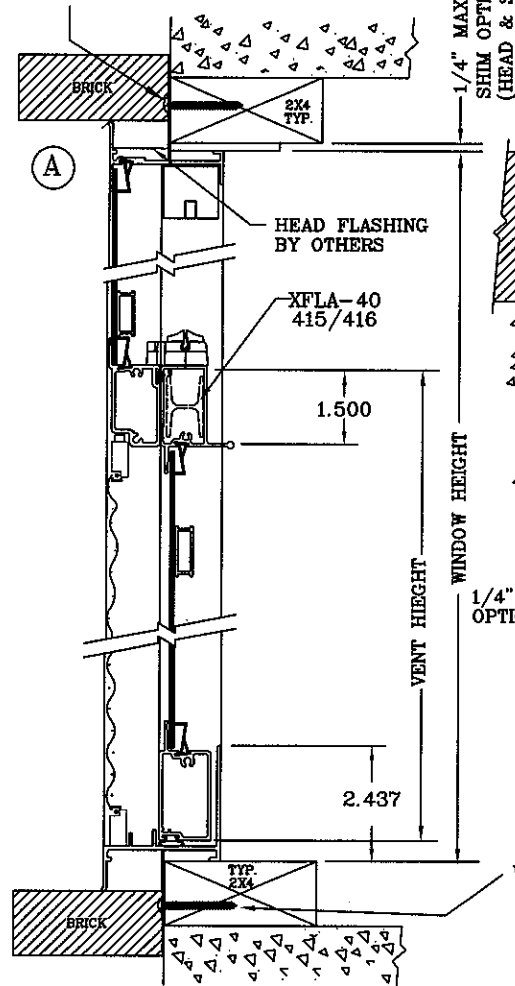
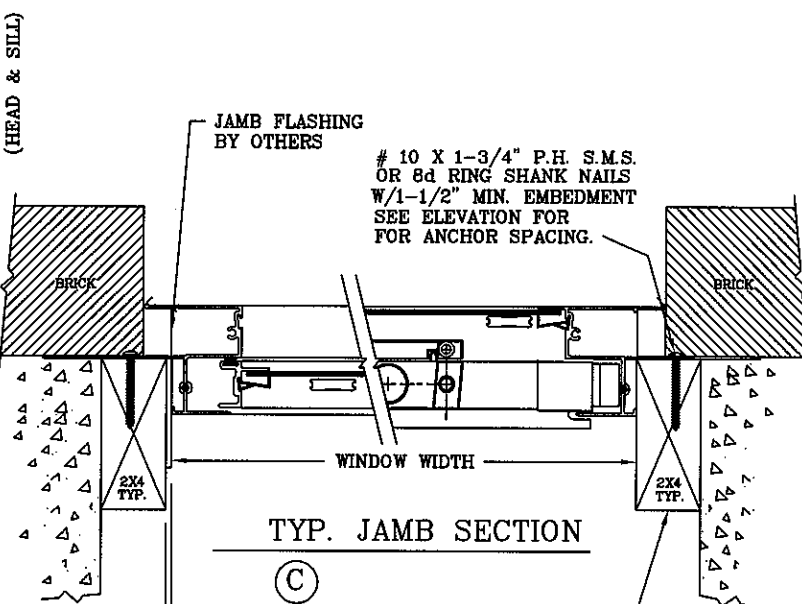


10 X 1-3/4" P.H. S.M.S.
OR 8d RING SHANK NAILS
W/1-1/2" MIN. EMBEDMENT
SEE ELEVATION FOR ANCHOR SPACING.



HEADER AND SILL SECTION



TYP. JAMB SECTION

2 BY BUCK SHALL BE SECURELY FASTENED TO TRANSFER LOAD TO STRUCTURAL SUBSTRATE.

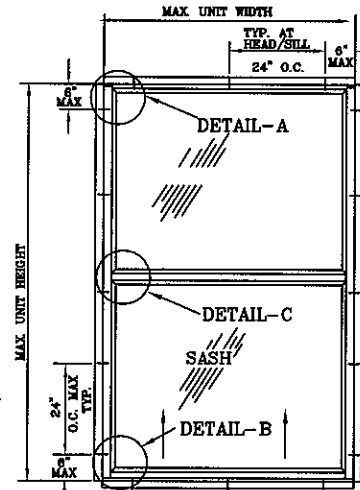
10 X 1-3/4" P.H. S.M.S.
OR 8d RING SHANK NAILS
W/1-1/2" MIN. EMBEDMENT
SEE ELEVATION FOR ANCHOR SPACING.

W.A. Davis Jr.
9/3/02

W.A. DAVIS JR. P.E.
FL REG. ENG. # 25539
DATE: 9/3/02

- NOTES:
- 1) SHIMS ARE OPTIONAL, MAX SHIM STACK 1/4".
 - 2) ALL ALUMINUM EXTRUSIONS ARE ALLOY 6063-T5 OR T6 WITH TYPICAL WALL THICKNESS OF 0.062".
 - 3) USE HIGH QUALITY CAULK BEHIND WINDOW FIN.
 - 4) GLASS THICKNESS BASED ON ASTM E 1300 GLASS CHARTS, AND MAY VARY DEPENDING ON SIZE.
 - 5) THE RESPONSIBILITY FOR SELECTION OF NORANDEX PRODUCTS TO MEET ANY APPLICABLE LOCAL LAWS, BUILDING CODES, ORDINANCES OR OTHER SAFETY REQUIREMENTS REST SOLELY WITH THE ARCHITECT, BUILDING OWNER OR CONTRACTOR.
 - 6) EQUAL FASTENERS AT HEAD AND SILL ARE REQUIRED.
 - 7) WOOD BUCKS NOT BY NORANDEX MUST SUSTAIN IMPOSED LOADS. CONTRACTOR IS RESPONSIBLE FOR MAINTAINING STRUCTURAL INTEGRITY OF THE WINDOW OPENING AND ANY WOOD FRAMING AROUND WINDOW HEADER.

WINDOW DIMENSIONS		FASTENER SCHEDULE					
WIDTH (INCHES)	HEIGHT (INCHES)	NO. ANCHORS HEAD/SILL			NO. ANCHORS JAMB		
		±35 (PSF)	±45 (PSF)	±60 (PSF)	±35 (PSF)	±45 (PSF)	±60 (PSF)
18-1/8"	26"	2	2	2	2	2	2
25-1/2"		2	2	2	2	2	2
36"		2	3	3	2	2	2
52-1/8"	38-1/4"	3	3	3	2	2	2
18-1/8"		2	2	2	2	3	3
25-1/2"		2	2	2	2	3	3
36"	50-5/8"	2	3	3	2	3	3
52-1/8"		3	3	3	2	3	3
18-1/8"		2	2	2	3	3	3
25-1/2"	63"	2	2	2	3	4	4
36"		2	3	3	3	4	4
52-1/8"		3	3	3	3	4	4
18-1/8"	76-3/4"	2	2	2	5	5	5
25-1/2"		2	2	2	5	5	5
36"		2	3	3	5	5	5
52-1/8"		3	3	3	5	5	5



438/416 SINGLE HUNG
FOR BRICK APPLICATION
INSTALLATION DETAIL AND
FASTENER SCHEDULE

SERIES: 438/416
ALUMINUM SINGLE HUNG
NORANDEX
4005 30th STREET WEST
BRADENTON, FL 34207
PHONE: (941) 766-1891

NO.	DATE	REVISIONS DESCRIPTION

DATE: 7/31/02
SCALE: N.P.S.
DWG. BY: RLB
CHK. BY:
DWG. NO.: MAR-015