

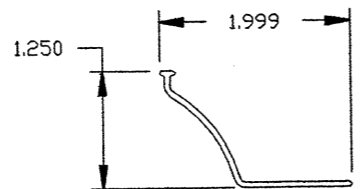
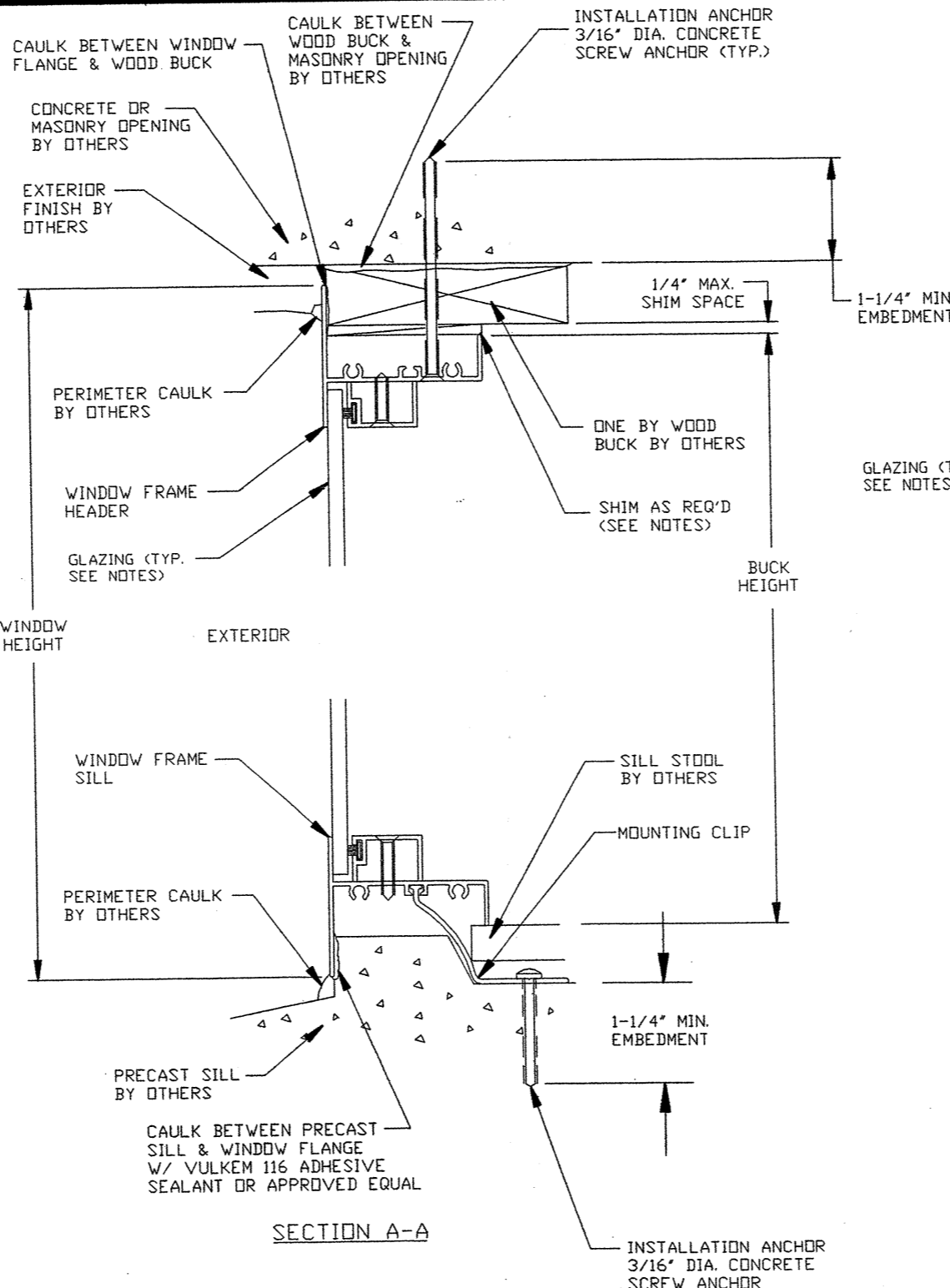
ANCHOR QUANTITY CHART

WINDOW SIZE IN INCHES	MIN. QUANTITY OF 3/16" DIA. CONCRETE ANCHORS REQ'D. FOR INSTALLATION	
	@ HEAD	@ EA. JAMB
24 X 24	2	1
24 X 30	2	1
24 X 36	2	1
24 X 42	2	1
24 X 48	2	1
24 X 54	2	1
24 X 60	2	2
24 X 66	2	2
24 X 72	2	2
30 X 24	2	1
30 X 30	2	1
30 X 36	2	1
30 X 42	2	1
30 X 48	2	1
30 X 54	2	2
30 X 60	2	2
30 X 66	2	2
30 X 72	2	2
36 X 24	2	1
36 X 30	2	1
36 X 36	2	1
36 X 42	2	1
36 X 48	2	2
36 X 54	2	2
36 X 60	2	2
36 X 66	2	2
36 X 72	2	2
42 X 24	2	1
42 X 30	2	1
42 X 36	2	1
42 X 42	2	1
42 X 48	2	2
42 X 54	2	2
42 X 60	2	2
42 X 66	2	2
42 X 72	2	2
48 X 24	2	1
48 X 30	2	1
48 X 36	2	1
48 X 42	2	1
48 X 48	2	2
48 X 54	2	2
48 X 60	2	2
48 X 66	2	2
48 X 72	2	3

ANCHOR QUANTITY CHART

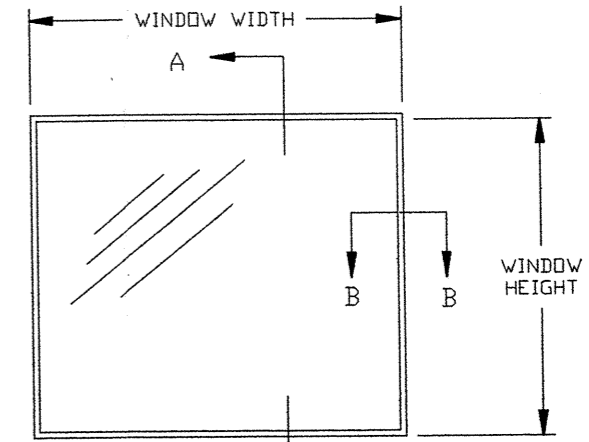
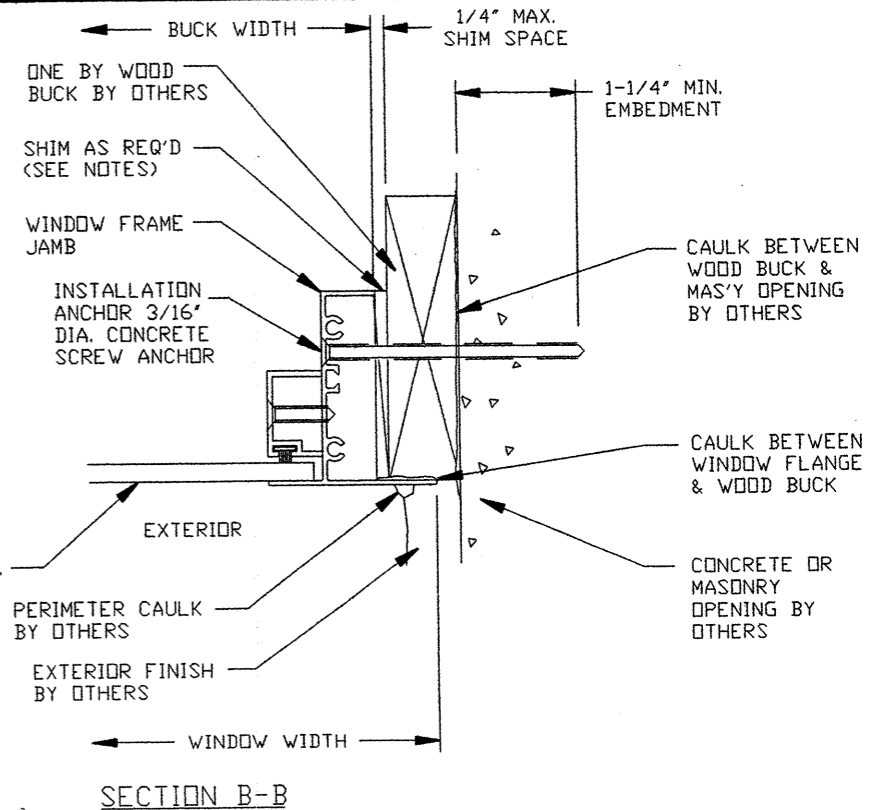
WINDOW SIZE IN INCHES	MIN. QUANTITY OF 3/16" DIA. CONCRETE ANCHORS REQ'D. FOR INSTALLATION	
	@ HEAD	@ EA. JAMB
54 X 24	1	1
54 X 30	2	1
54 X 36	2	1
54 X 42	2	1
54 X 48	2	2
54 X 54	2	2
54 X 60	2	2
54 X 66	2	2
54 X 72	2	3
60 X 24	2	1
60 X 30	2	1
60 X 36	2	1
60 X 42	2	1
60 X 48	2	2
60 X 54	2	2
60 X 60	2	2
60 X 66	2	3
60 X 72	2	3
72 X 24	2	1
72 X 30	2	1
72 X 36	2	1
72 X 42	2	1
72 X 48	2	2
72 X 54	2	2
72 X 60	3	2
72 X 66	3	3
72 X 72	3	3
84 X 24	2	1
84 X 30	2	1
84 X 36	3	1
84 X 42	3	1
84 X 48	3	2
84 X 54	4	2
84 X 60	4	2
84 X 66	4	3
84 X 72	4	3

- NOTES:**
- 1) SHIM AS REQ'D. AT EACH INSTALLATION ANCHOR WITH LOAD BEARING SHIM. MAX ALLOWABLE SHIM STACK TO BE 1/4". USE SHIMS WHERE SPACE IS GREATER THAN 1/16".
 - 2) WINDOW FRAME MATERIAL: ALUMINUM ALLOY 6063.
 - 3) CONCRETE SCREW ANCHORS MUST BE OF SUFFICIENT LENGTH TO ACHIEVE MIN. 1-1/4" INTO MASONRY OR CONCRETE.
 - 4) LOCATE CONCRETE INSTALLATION ANCHORS AS FOLLOWS:
WHERE ANCHOR QUANTITY CHART INDICATES 1 CONCRETE INSTALLATION ANCHOR REQ'D. IN JAMBS, LOCATE ANCHOR AT MID POINT OF FRAMING MEMBER SPAN.
WHERE ANCHORS QUANTITY CHART INDICATES 2 INSTALLATION ANCHORS ARE REQ'D. IN HEAD & JAMBS, LOCATE ANCHORS WITHIN 6" OF CORNER OF FRAMING MEMBER.
WHERE ANCHOR QUANTITY CHART INDICATES 3 OR 4 INSTALLATION ANCHORS ARE REQ'D. IN HEAD & JAMBS LOCATE ANCHORS WITHIN 6 IN. OF EACH CORNER OF FRAMING MEMBER & EQUALLY SPACE BETWEEN.
 - 5) USE LATEX CAULK BEHIND WINDOW FLANGE AT HEAD & JAMBS. SILL MUST BE ATTACHED TO SUBSTRATE WITH VULKEM 116 ADHESIVE CAULK OR APPROVED EQUAL.
 - 6) USE LATEX CAULK FOR PERIMETER SEAL AROUND EXTERIOR OF WINDOW FLANGE.
 - 7) IF EXACT WINDOW SIZE IS NOT LISTED IN ANCHOR CHART, USE ANCHOR QUANTITY LISTED WITH NEXT LARGER SIZE.
 - 8) GLASS THICKNESS MAY VARY PER THE REQUIREMENTS OF ASTM E1300 GLASS PARTS. INSULATING GLASS IS SHOWN, SINGLE GLAZING ALSO QUALIFIED.
- ALL FACTORY APPLIED HOLES NOT DESIGNATED FOR CONCRETE SCREW ANCHOR SHOULD BE FILLED WITH #8 SCREWS OF SUFFICIENT LENGTH TO PROVIDE MIN. OF 5/8" EMBEDMENT INTO WOOD BUCK. MAX. ALLOWABLE SPACING BETWEEN #8 SCREWS IS 24" O.C.



* MOUNTING CLIP TO BE 1-1/2" WIDE WITH WALL THICKNESS OF .058

MOUNTING CLIP



DESIGN PRESSURE CAPACITY
W/ ANNEALED GLASS = ± 35.0 PSF
W/ TEMPERED GLASS = ± 70.0 PSF

CUSTOM WINDOW SYSTEMS, INC. OCALA, FLORIDA		
TITLE: SERIES 4000 FLANGE ALUMINUM FIXED WINDOW INSTALLATION DETAILS ONE BY WOOD BUCK		
ENGINEER: MANUEL MARTINEZ	DRN: BB	DATE: 2/22/02
DISCIPLINE: CIVIL	SCALE: N.T.S.	DWG. NO: CWS0117
FL. REG. NO: 47182	REV. LETTER:	SHEET: 1 OF 1