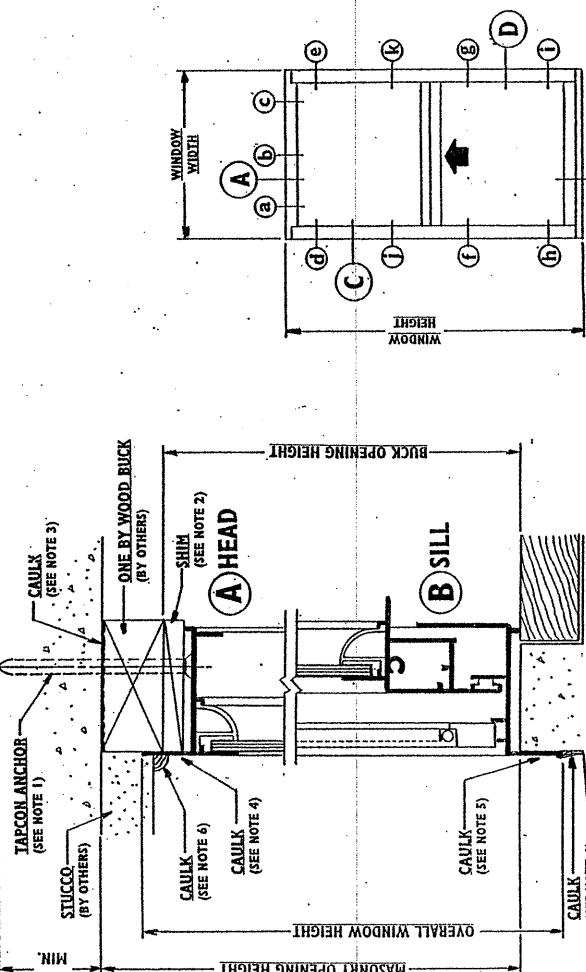
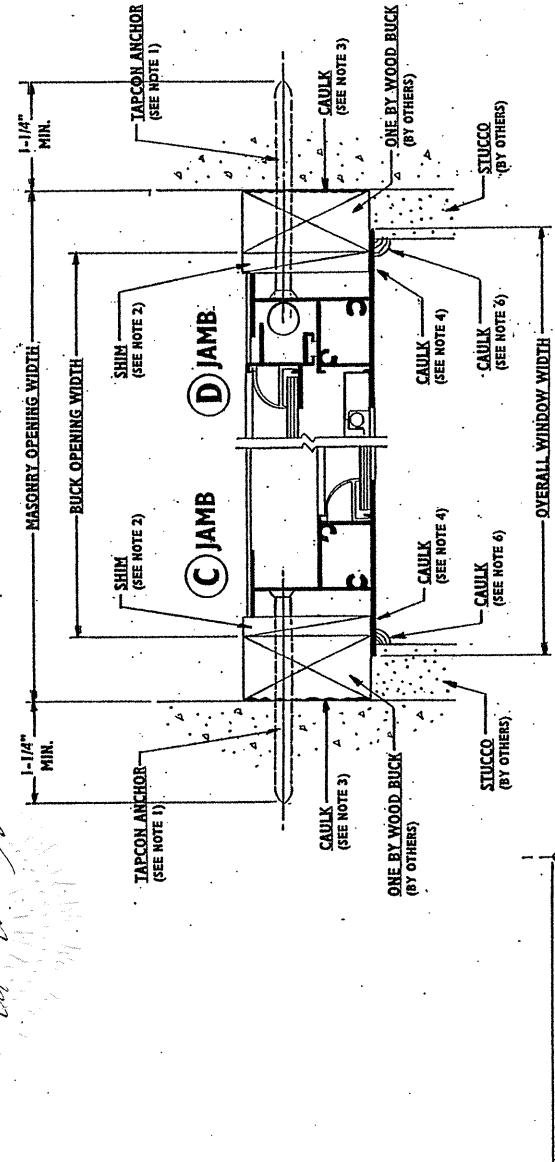


ROBT. E. FISHER  
 WM. M. MEYERS, P.E.  
 Consulting Engineers  
 9301 N.E. 6th Ave. C-301  
 Miami Shores, FL 33138  
 (305) 758-3117 557-4006 Fax 352-6282

Date: 04/15/04  
 FLA. 18755  
 STRUCTURAL

CALLOUT SIZE	TAPCON LOCATION CHART (SEE ELEVATION)		HEAD	JAMBS
	OVERALL WINDOW SIZE	BUCK SIZE		
12	19-1/8 x 26	18-1/8 x 25	30-40 PSF	41-70 PSF
13	19-1/8 x 36-3/8	18-1/8 x 37-3/8	30-40 PSF	41-70 PSF
14	19-1/8 x 50-5/8	18-1/8 x 49-5/8	30-40 PSF	41-70 PSF
15	19-1/8 x 63	18-1/8 x 62	30-40 PSF	41-70 PSF
16	19-1/8 x 76-3/4	18-1/8 x 75-3/4	30-40 PSF	41-70 PSF
17	25-1/2 x 26	25-1/2 x 25	30-40 PSF	41-70 PSF
17 3/4	26-1/2 x 50-5/8	25-1/2 x 49-5/8	30-40 PSF	41-70 PSF
17 3/8	26-1/2 x 63	25-1/2 x 62	30-40 PSF	41-70 PSF
17 3/4	26-1/2 x 76-3/4	25-1/2 x 75-3/4	30-40 PSF	41-70 PSF
2824	32 x 46-7/16	31 x 45-7/16	30-40 PSF	41-70 PSF
2834	32 x 60-7/16	31 x 59-7/16	30-40 PSF	41-70 PSF
2840	32 x 74-1/8	31 x 73-1/8	30-40 PSF	41-70 PSF
2850	32 x 88-1/4	31 x 87-1/4	30-40 PSF	41-70 PSF
22	37 x 24	36 x 23	30-40 PSF	41-70 PSF
23	37 x 38-3/8	36 x 37-3/8	30-40 PSF	41-70 PSF
24	37 x 52-3/8	36 x 51-3/8	30-40 PSF	41-70 PSF
25	37 x 66-3/4	36 x 65-3/4	30-40 PSF	41-70 PSF
26	37 x 80-7/8	36 x 79-7/8	30-40 PSF	41-70 PSF
27	37 x 94	36 x 93	30-40 PSF	41-70 PSF
3430	40 x 36-7/16	39 x 35-7/16	30-40 PSF	41-70 PSF
3434	40 x 50-7/16	39 x 49-7/16	30-40 PSF	41-70 PSF
3438	40 x 64-7/16	39 x 63-7/16	30-40 PSF	41-70 PSF
3440	40 x 78-7/16	39 x 77-7/16	30-40 PSF	41-70 PSF
3450	40 x 92-7/16	39 x 91-7/16	30-40 PSF	41-70 PSF
3460	40 x 106-7/16	39 x 105-7/16	30-40 PSF	41-70 PSF
4030	48 x 32-7/16	47 x 31-7/16	30-40 PSF	41-70 PSF
4034	48 x 46-7/16	47 x 45-7/16	30-40 PSF	41-70 PSF
4038	48 x 60-7/16	47 x 59-7/16	30-40 PSF	41-70 PSF
4050	48 x 74-7/16	47 x 73-7/16	30-40 PSF	41-70 PSF
32	53-1/8 x 26	52-1/8 x 25	30-40 PSF	41-70 PSF
33	53-1/8 x 36-3/8	52-1/8 x 37-3/8	30-40 PSF	41-70 PSF
34	53-1/8 x 50-5/8	52-1/8 x 49-5/8	30-40 PSF	41-70 PSF
35	53-1/8 x 63	52-1/8 x 62	30-40 PSF	41-70 PSF
36	53-1/8 x 76-3/4	52-1/8 x 75-3/4	30-40 PSF	41-70 PSF
37	53-1/8 x 84	52-1/8 x 83	30-40 PSF	41-70 PSF

- NOTES:
- INSTALL 3/16" DIA. TAPCON ANCHORS LOCATED AS PER CHART. TAPCON ANCHORS SHALL EMBED 1-1/4" MIN. INTO MASONRY.
  - SHIM AT TAPCON ANCHORS IF REQUIRED. SHIM NOT TO EXCEED 1/4" MAX. THICKNESS.
  - CAULK BETWEEN MASONRY AND WOOD BUCK WITH SILICONIZED ACRYLIC CAULKING OR APPROVED EQUIVALENT.
  - CAULK BEHIND HEAD AND JAMB FLANGES WITH SILICONIZED ACRYLIC CAULKING OR APPROVED EQUIVALENT.
  - CAULK BEHIND SILL FLANGE WITH VULKEM 116 ADHESIVE CAULKING OR APPROVED EQUIVALENT.
  - CAULK EXTERIOR PERIMETER OF HEAD, SILL AND JAMB FLANGES WITH SILICONIZED ACRYLIC CAULKING OR APPROVED EQUIVALENT.
  - USE NEXT SIZE LARGER FOR SIZES NOT LISTED ON CHART.
  - USE #8 SCREWS IN FACTORY SUPPLIED INSTALLATION HOLES WHICH ARE NOT DESIGNATED FOR TAPCON ANCHORS. THESE SCREWS SHALL EMBED 5/8" MIN. INTO WOOD BUCK.
  - ALL ANCHORS, SCREWS, SHIMS AND CAULKING BY OTHERS.
  - WINDOW FRAMING MATERIAL SHALL BE 6063-T5 ALUMINUM ALLOY.
  - MILCO SERIES-1000 SINGLE HUNG WINDOW SHOWN. INSTRUCTIONS APPLY ALSO TO MILCO SERIES 5000 SINGLE HUNG WINDOW.



MILCO BUILDING PRODUCTS  
 Swainsboro, GA

APPROVED BY: \_\_\_\_\_  
 DRAWN BY: HMR

SCALE: NONE  
 DATE: 2/18/02

INSTALLATION INSTRUCTIONS  
 MILCO SERIES 1000 SINGLE HUNG WINDOW

DRAWING NUMBER  
**M-1000**

ELEVATION  
 AS VIEWED FROM EXTERIOR