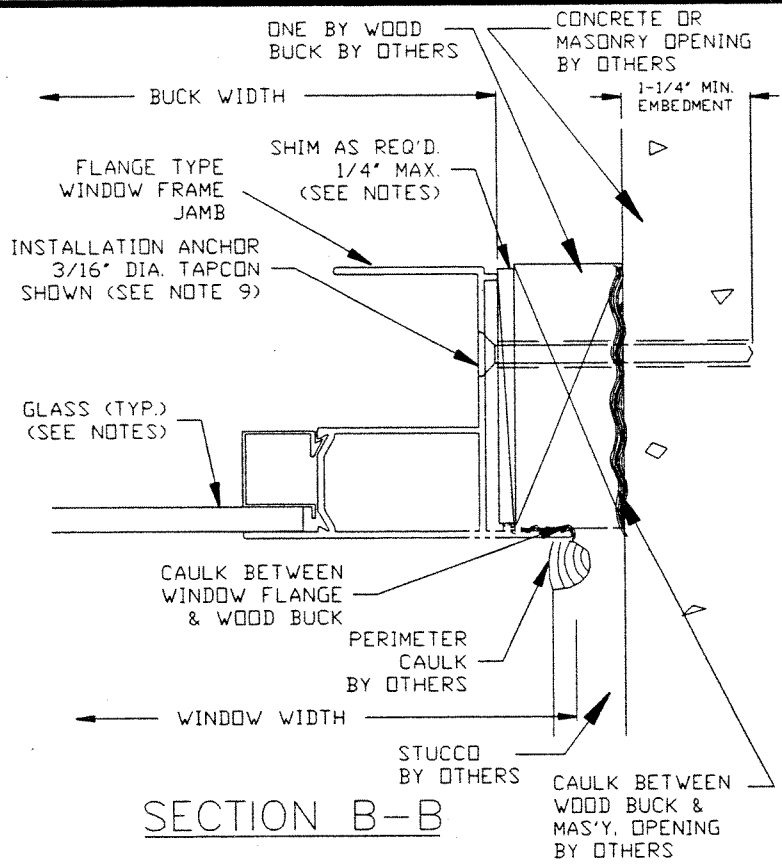
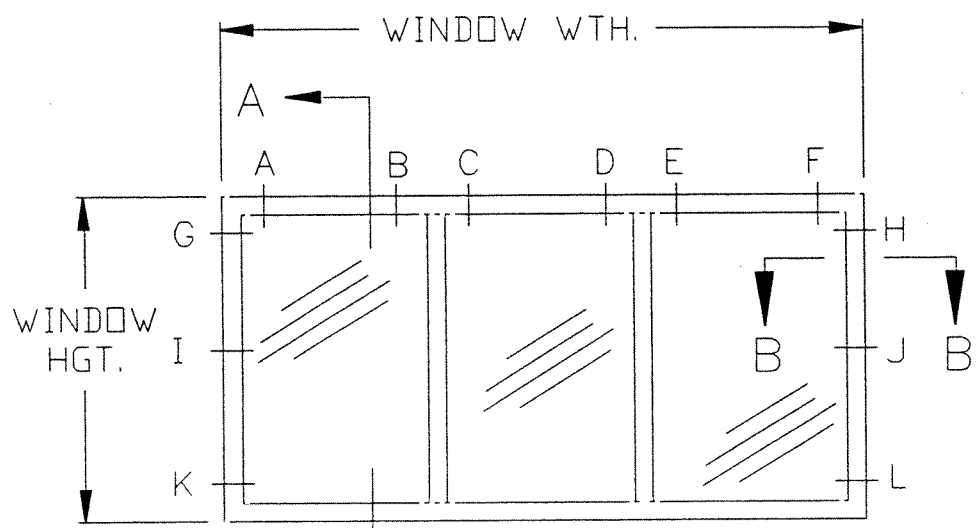


SECTION A-A



SECTION B-B



ELEVATION VIEWED FROM EXTERIOR

TAPCON LOCATION CHART					
CALL SIZE	TIP TO TIP	LOCATIONS IN HEAD		LOCATIONS IN JAMB	
		UP TO 50 PSF	51PSF TO 70PSF	UP TO 50PSF	51PSF TO 70PSF
D22	74 X 26	C,D	C,D	I,J	I,J
D23	74 X 38 3/8	C,D	B,C,D,E	I,J,K,L	I,J,K,L
D24	74 X 50 5/8	C,D	B,C,D,E	I,J,K,L	G,H,I,J,K,L
D32	106 1/4 X 26	C,D	B,C,D,E	I,J	I,J,K,L
D33	106 1/4 X 38 3/8	B,C,D,E	B,C,D,E	I,J,K,L	I,J,K,L
D34	106 1/4 X 50 5/8	B,C,D,E	A,B,C,D,E,F	I,J,K,L	G,H,I,J,K,L
T22	111 X 26	C,D	B,C,D,E	I,J	I,J
T23	111 X 38 3/8	B,C,D,E	A,B,C,D,E,F	I,J,K,L	I,J,K,L
T24	111 X 50 5/8	B,C,D,E	A,B,C,D,E,F	I,J,K,L	I,J,K,L
M2	120 X 26	B,C,D,E	B,C,D,E	I,J,K,L	I,J,K,L
M3	120 X 38 3/8	B,C,D,E	A,B,C,D,E,F	I,J,K,L	I,J,K,L
M4	120 X 50 5/8	A,B,C,D,E,F	A,B,C,D,E,F	G,H,I,J,K,L	I,J,K,L
6020	72 X 24	C,D	C,D	I,J	I,J
6030	72 X 36	C,D	B,C,D,E	I,J	I,J,K,L
6040	72 X 48	C,D	B,C,D,E	I,J,K,L	I,J,K,L
7020	84 X 24	C,D	C,D	I,J	I,J
7030	84 X 36	B,C,D,E	B,C,D,E	I,J,K,L	I,J,K,L
7040	84 X 48	B,C,D,E	B,C,D,E	I,J,K,L	I,J,K,L
8020	96 X 24	C,D	B,C,D,E	I,J	I,J,K,L
8030	96 X 36	B,C,D,E	B,C,D,E	I,J,K,L	I,J,K,L
8040	96 X 48	B,C,D,E	A,B,C,D,E,F	I,J,K,L	G,H,I,J,K,L
9020	108 X 24	C,D	B,C,D,E	I,J	I,J,K,L
9030	108 X 36	B,C,D,E	B,C,D,E	I,J,K,L	I,J,K,L
9040	108 X 48	B,C,D,E	A,B,C,D,E,F	I,J,K,L	I,J,K,L
10020	120 X 24	C,D	B,C,D,E	I,J	I,J,K,L
10030	120 X 36	B,C,D,E	A,B,C,D,E,F	I,J,K,L	I,J,K,L
10040	120 X 48	B,C,D,E	A,B,C,D,E,F	I,J,K,L	I,J,K,L

- NOTES:
- 1) SHIM AS REQ'D. AT EACH INSTALLATION ANCHOR. MAX. ALLOWABLE SHIM STACK TO BE 1/4".
  - 2) WINDOW FRAME MATERIAL: ALUMINUM ALLOY 6063.
  - 3) TAPCON INSTALLATION ANCHOR MUST BE OF SUFFICIENT LTH. TO ACHIEVE MIN. EMBEDMENT OF 1-1/4" INTO MASONRY OR CONCRETE.
  - 4) USE SILICONIZED ACRYLIC CAULK BEHIND WINDOW FLANGE AT HEAD & JAMBS. SILL MUST BE ATTACHED TO THE SUBSTRATE WITH VULKEM 116 ADHESIVE CAULK OR APPROVED EQUAL.
  - 5) USE SILICONIZED ACRYLIC CAULK FOR PERIMETER SEAL AROUND EXTERIOR OF WINDOW FLANGE.
  - 6) IF EXACT WINDOW SIZE IS NOT LISTED IN ANCHOR CHART, USE ANCHOR QUANTITY LISTED WITH NEXT LARGER SIZE, FOR THE APPROPRIATE DESIGN PRESSURE REQ'D.
  - 7) GLASS THICKNESS MAY VARY PER THE REQUIREMENTS OF ASTM E1300 GLASS CHARTS.
  - 8) LETTER DESIGNATIONS ON THE TAPCON LOCATION CHART INDICATE WHERE TAPCON ANCHORS ARE TO BE INSTALLED WHEN USING THE EXTERIOR ELEVATION AS A KEY.
  - 9) ALL FACTORY APPLIED HOLES NOT DESIGNATED FOR TAPCON ANCHOR SHOULD BE FILLED WITH #8 SCREWS OF SUFFICIENT LTH. TO PROVIDE MIN. 5/8 IN. EMBEDMENT INTO WOOD BUCK.
  - 10) APPLICATION OF VULKEM 116 ADHESIVE CAULK AT FRAME SILL MUST COMPLY WITH SEALANT MANUFACTURER'S RECOMMENDATIONS.
  - 11) WHERE WINDOW IS INSTALLED IN MASONRY OPENING WITH A STRUCTURAL TWO BY BUCK, USE #10 SCREWS OF SUFFICIENT LENGTH TO ACHIEVE 1-3/8" MIN. EMBEDMENT AT ALL INSTALLATION FASTENER LOCATIONS.

FLORIDA EXTRUDERS INTERNATIONAL, INC.  
SANFORD, FLORIDA

TITLE: INSTALLATION DETAIL W/ TAPCONS HORZ. SLIDING  
FLANGE WINDOW XDX CONFIGURATION- SERIES 1000

DRAWN BY: BB APPROVED BY:

DATE: 10/23/01 SCALE: NTS DWG.: FLEX0022

*[Handwritten Signature]*  
FEB 21 2002