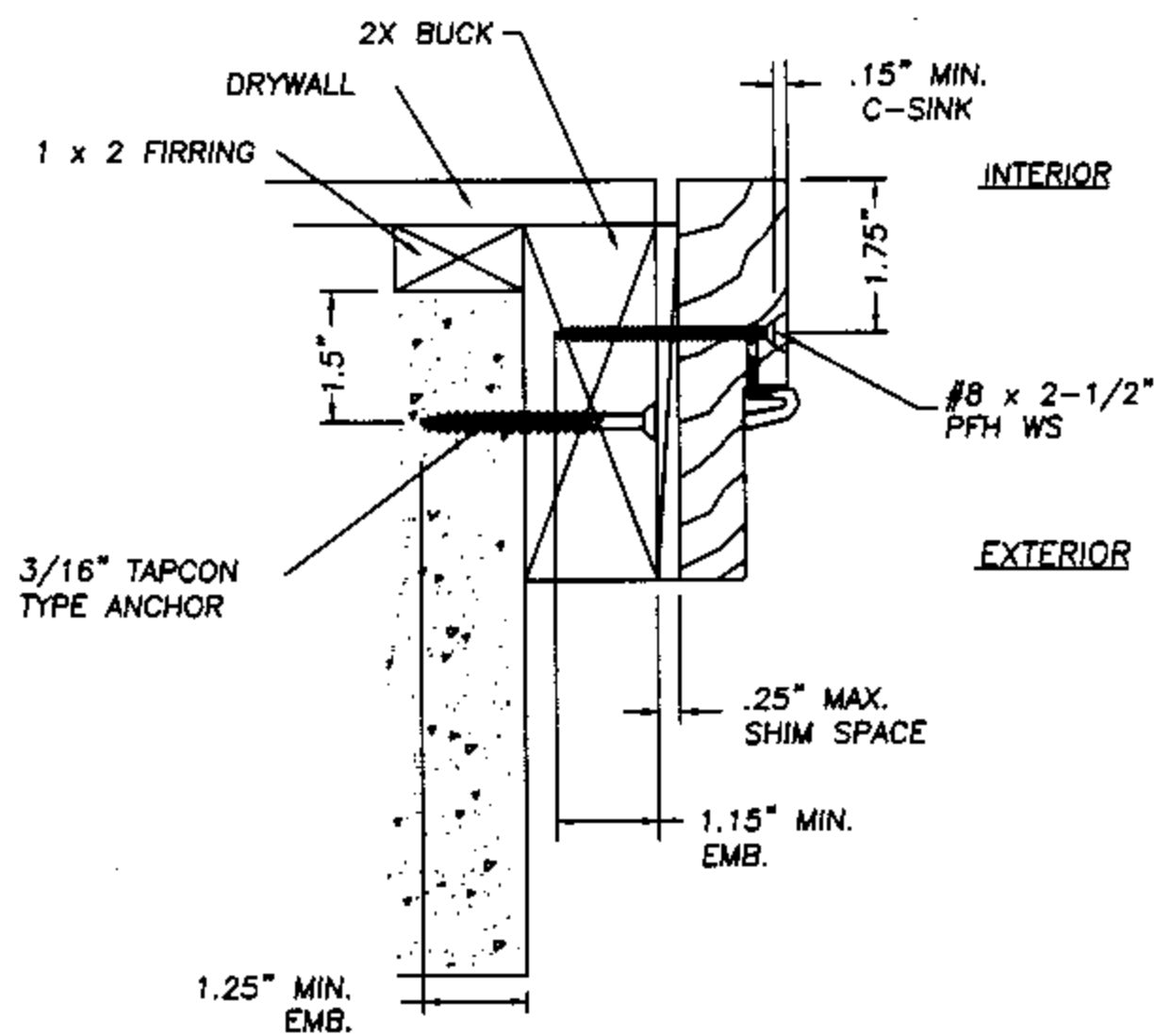
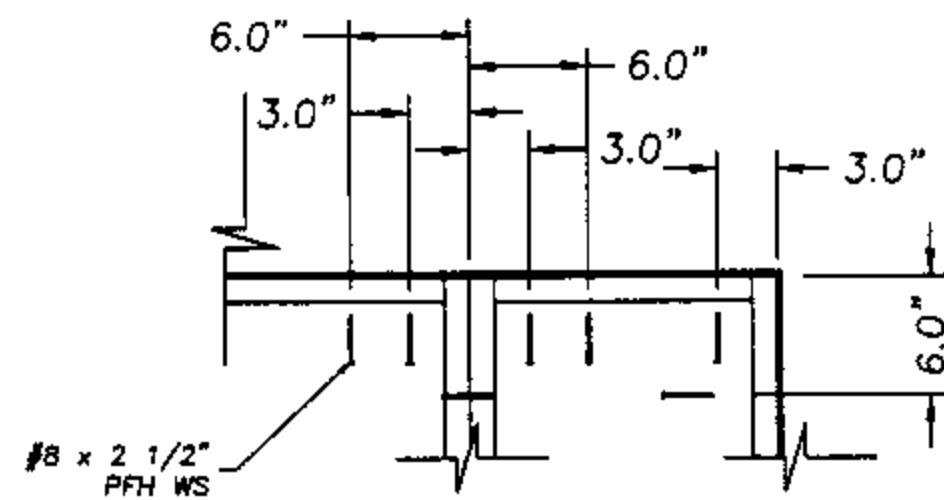


HEAD JAMB TO 2X SUB-BUCK

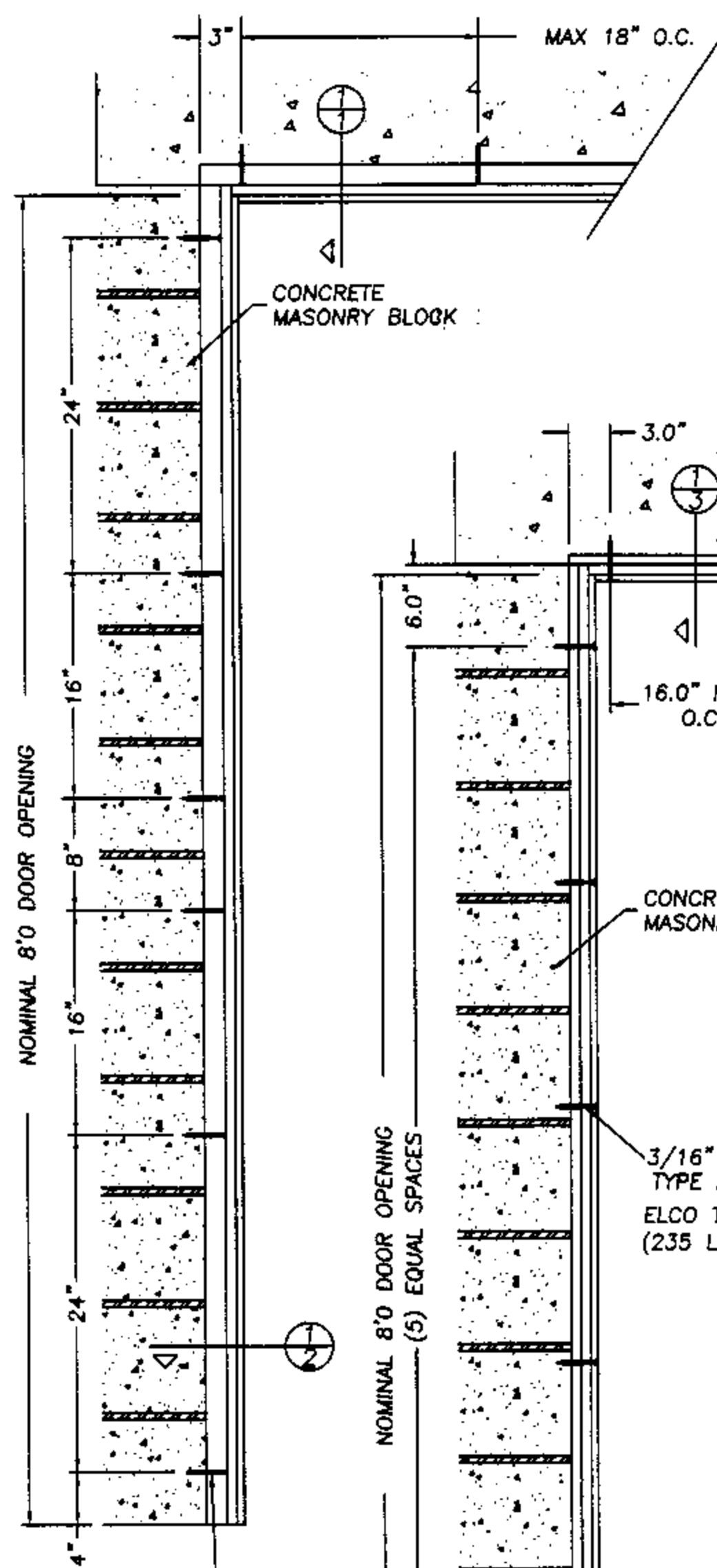


VERTICAL SIDE JAMB TO 2X SUB-BUCK

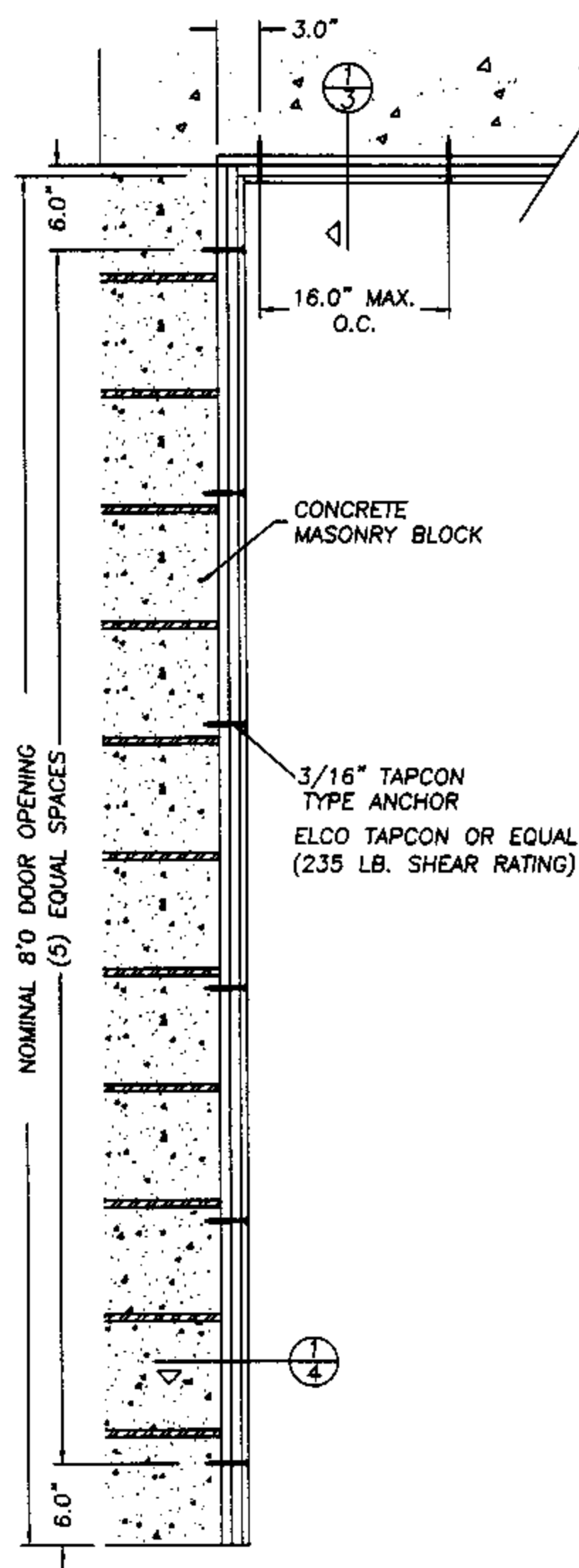


ANCHORING OF SIDELITE TO 2X BUCK

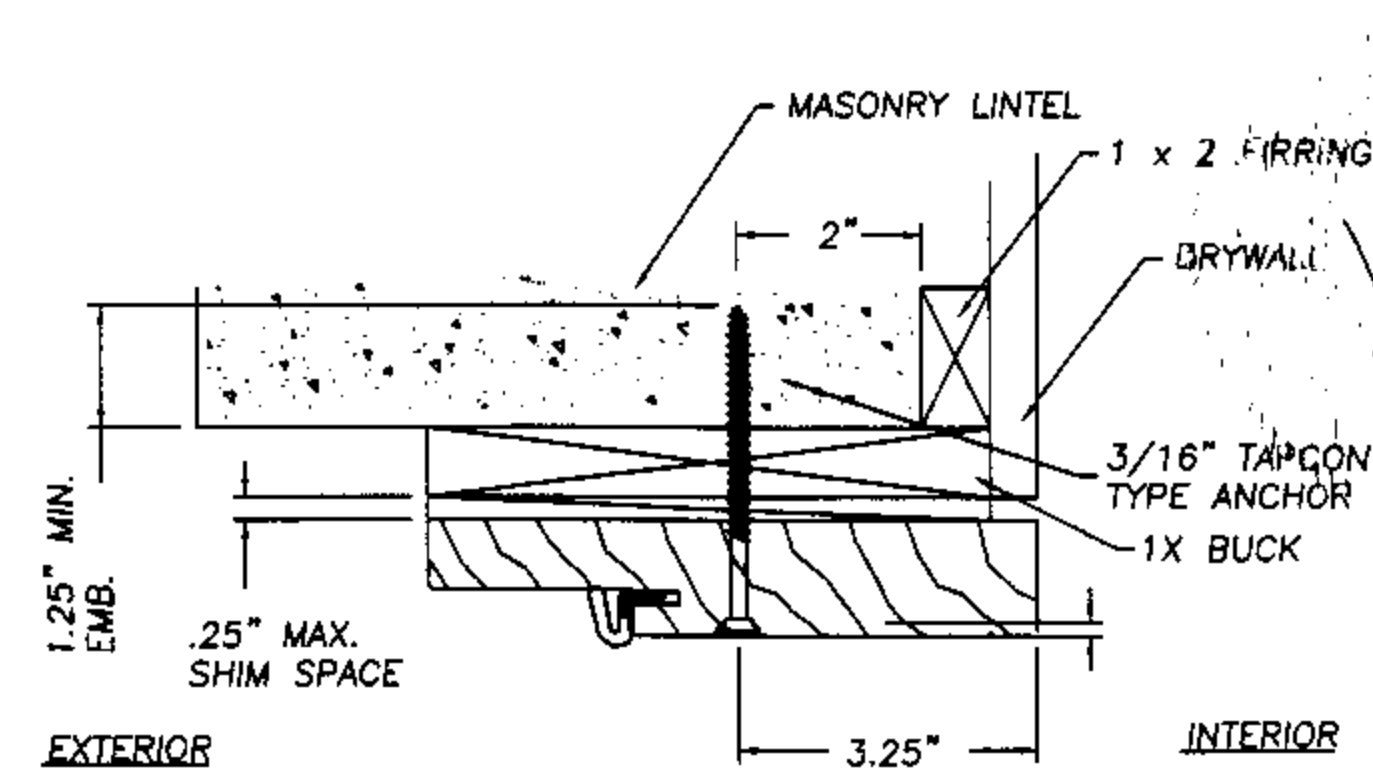
- NOTE:
1. When using a 1X sub-buck a 6-9/16" jamb is required to allow for min. edge spacing for Tapcon type anchors.
  2. A minimum clearance of 2.0" for all anchoring screws to mortar joints must be maintained.



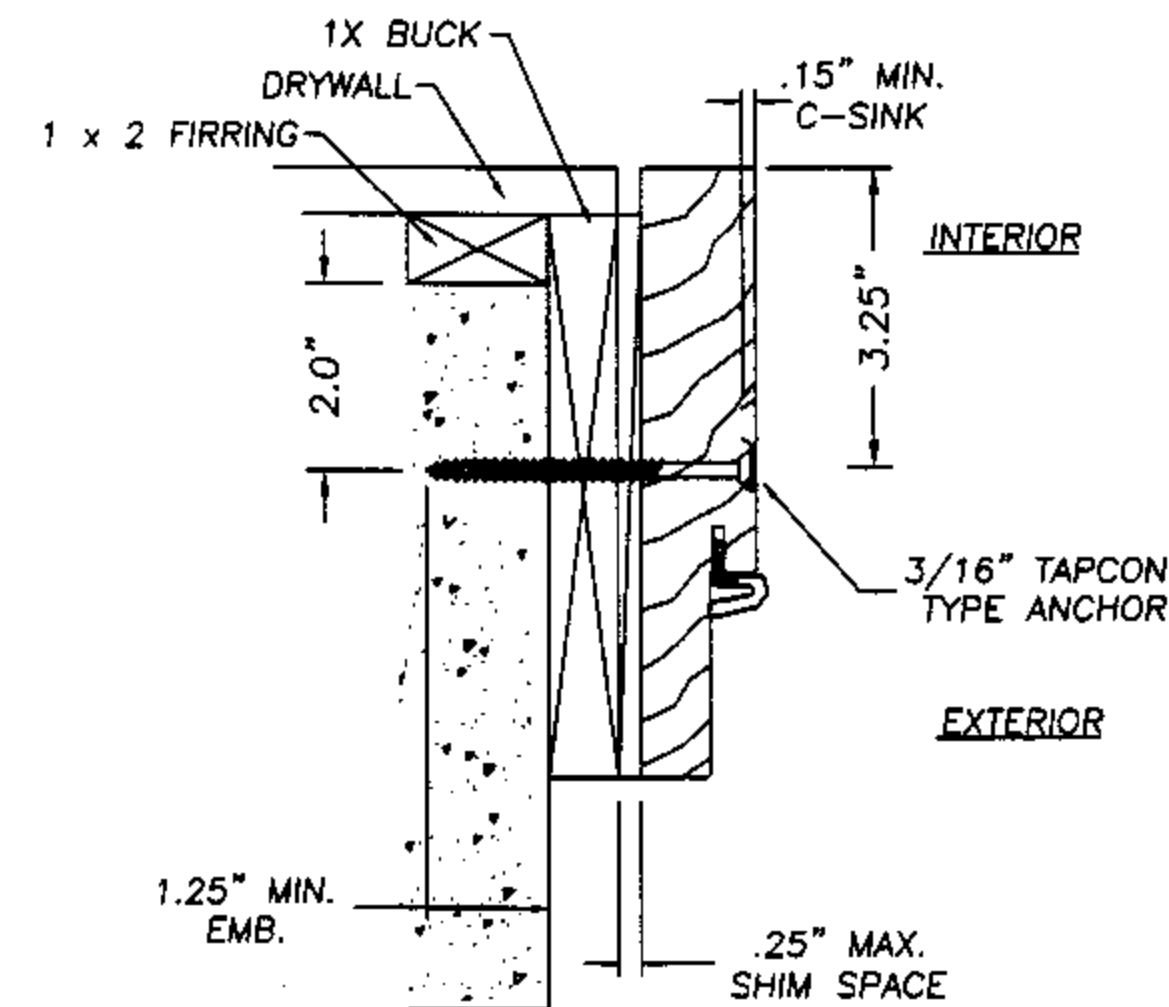
2 X INSTALLATION



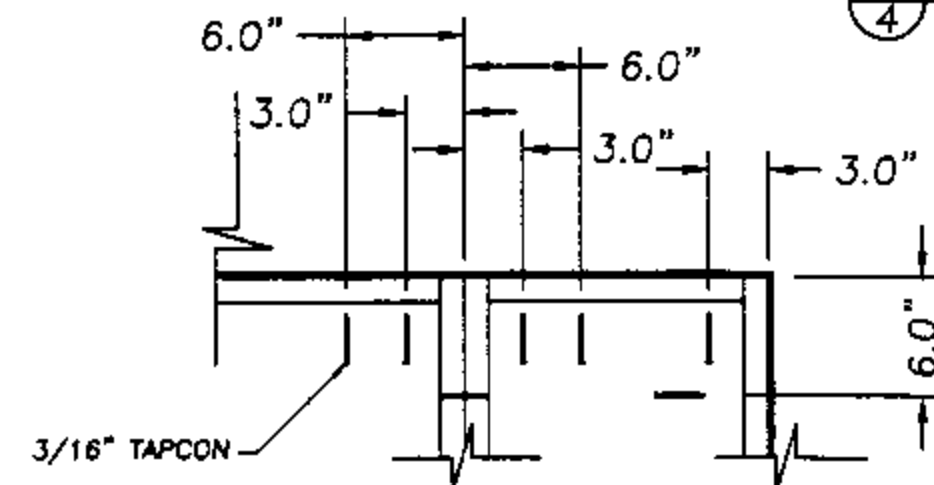
1 X INSTALLATION



HEAD JAMB TO 1X SUB-BUCK



VERTICAL SIDE JAMB TO 1X SUB-BUCK



ANCHORING OF SIDELITE THROUGH 1X BUCK

JUNE 28, 2002  
 Lyndon F. Schmidt  
 Florida P. E. No. 43409  
 19506 French Lake Drive  
 Lutz, FL 33558

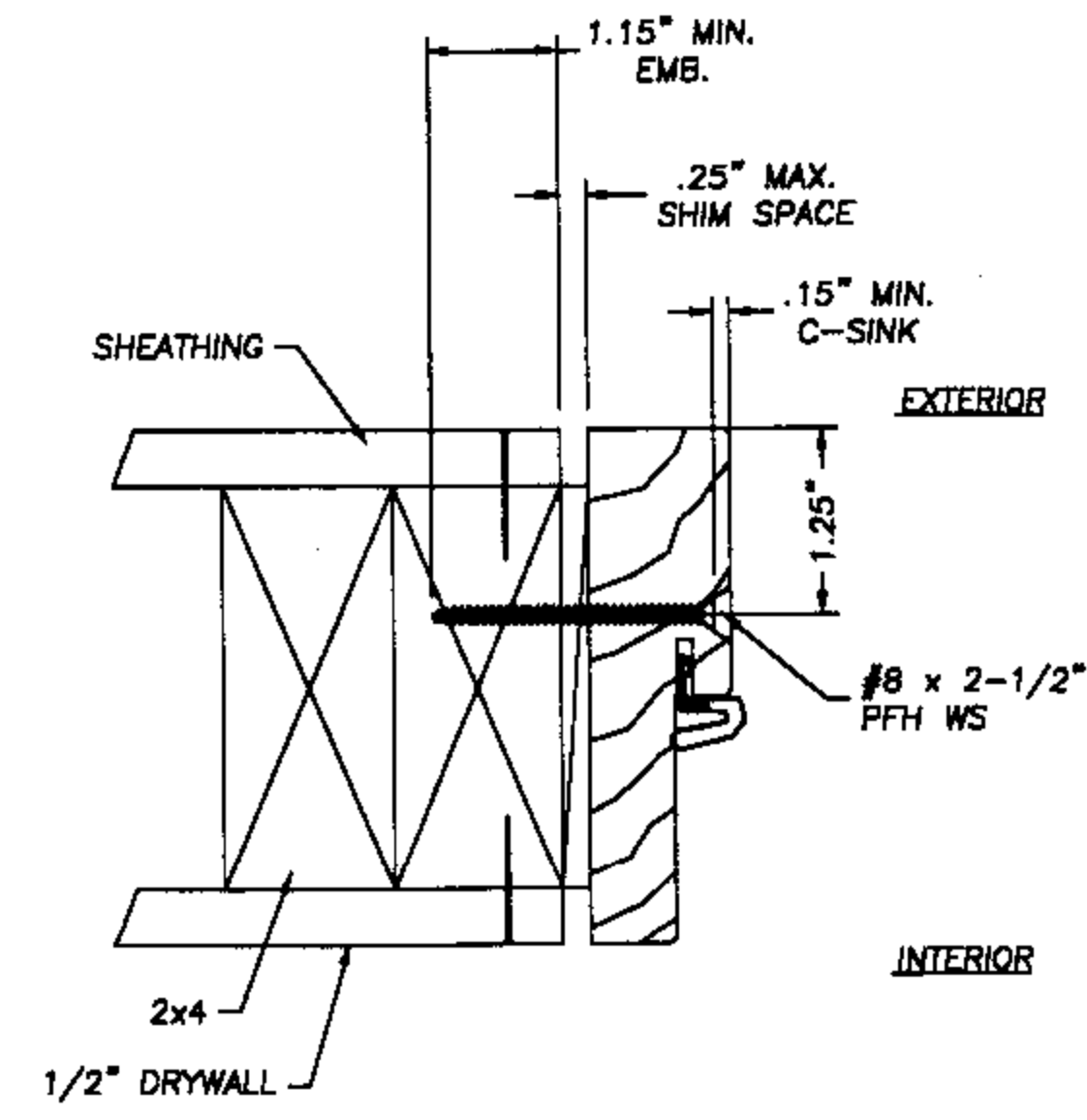
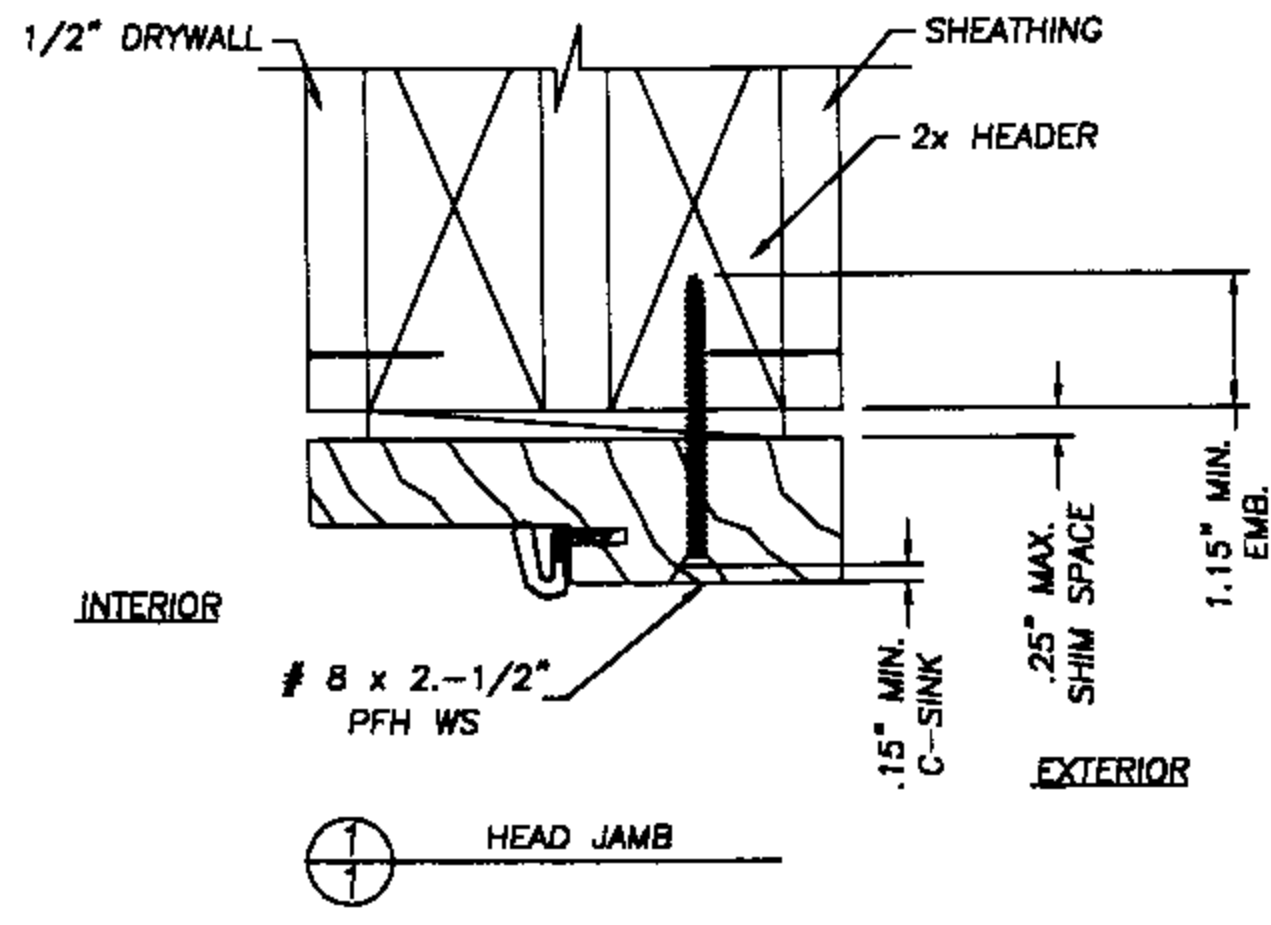
JELD-WEN, INC.  
 31725 HIGHWAY 97 NORTH  
 CHILOQUIN, OR. 97624  
 PH. 541.783.2057

ANCHOR CROSS SECTIONS  
 MASONRY 8'0  
 OUT-SWING WOOD FRAME

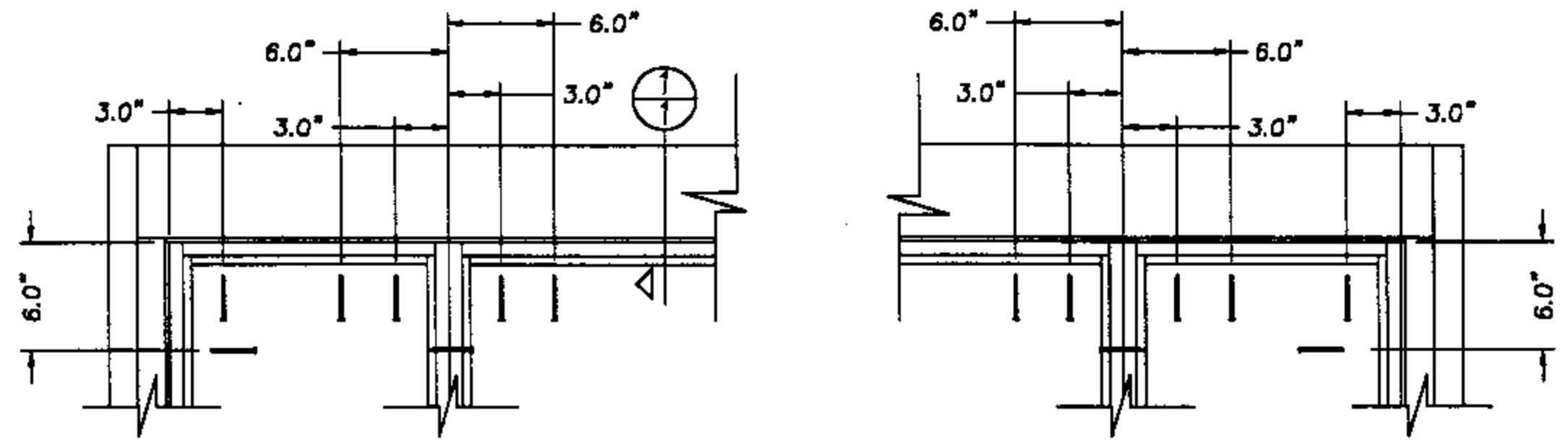
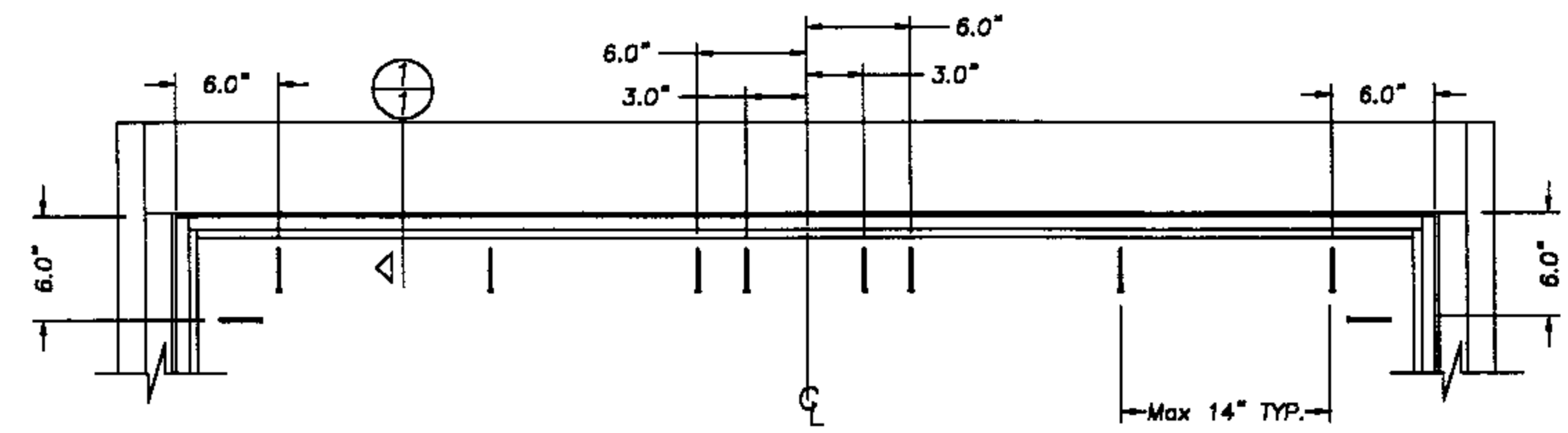
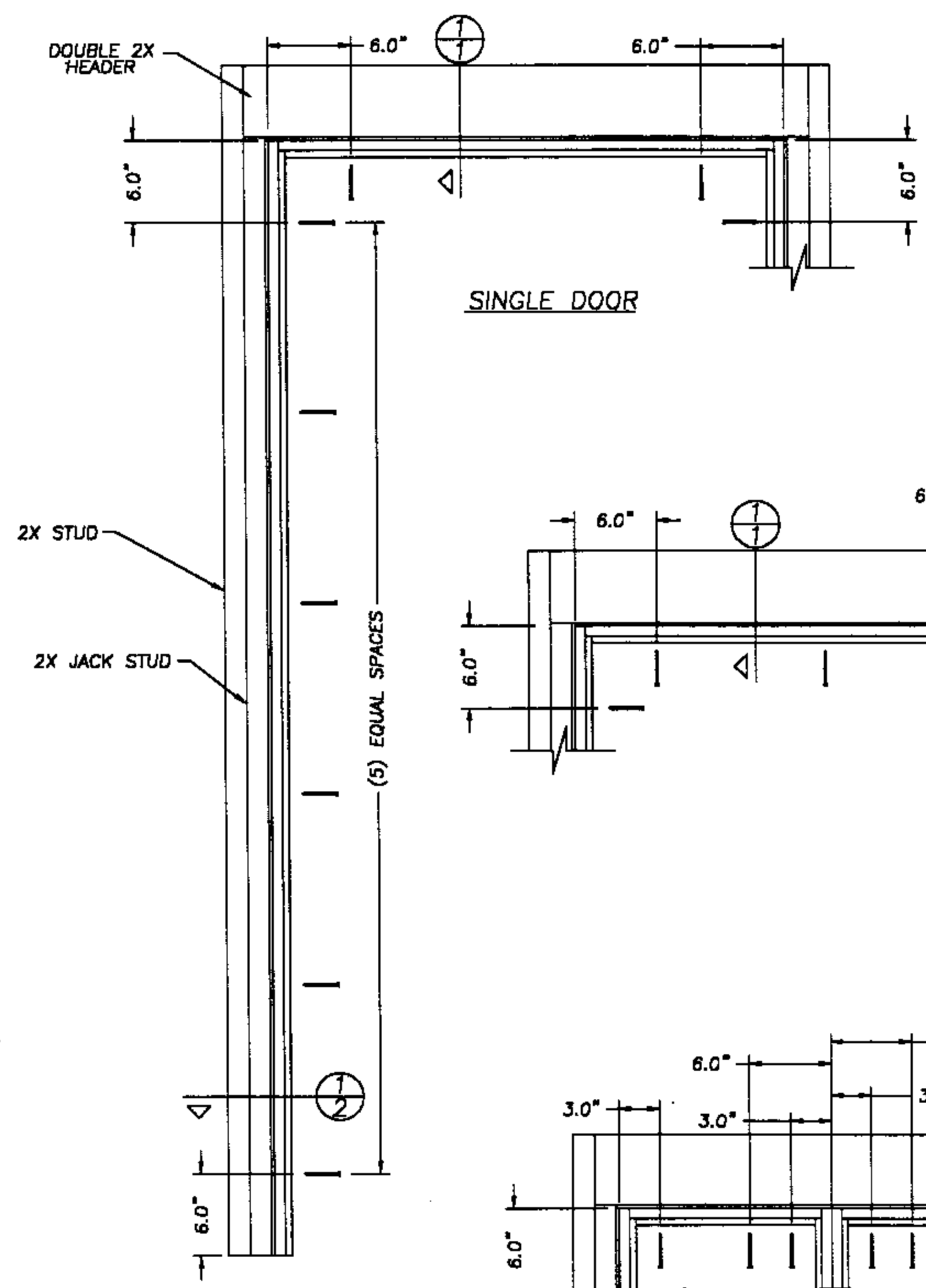
RW BUILDING CONSULTANTS, INC.  
 813.659.9197

DATE: 6/12/02  
 SCALE: NTS  
 DWG. BY: WLN  
 CHK. BY: RW  
 DRAWING NO.: JW-106-OC

SHEET 2 OF 3



1  
2 VERTICAL SIDE JAMB



JUNE 28, 2002  
Lyndon F. Schmidt  
Florida P. E. No. 43409  
19506 French Lace Drive  
Lutz, FL 33558

JELD-WEN, INC.  
31725 HIGHWAY 97 NORTH  
CHILOQUIN, OR. 97624  
PH. 541.783.2057

ANCHOR CROSS SECTIONS  
OUT-SWING  
WOOD FRAME

RW BUILDING CONSULTANTS, INC.  
813.659.9197

DATE: 6/12/02  
SCALE: NTS  
DWG. BY: WLN  
CHK. BY: RW  
DRAWING NO.: JW-106-OC  
SHEET 3 OF 3