

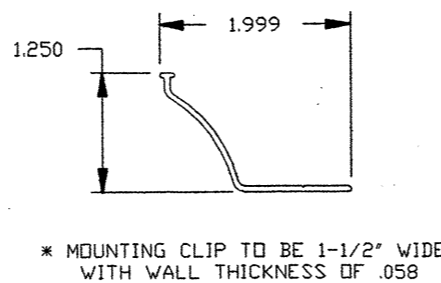
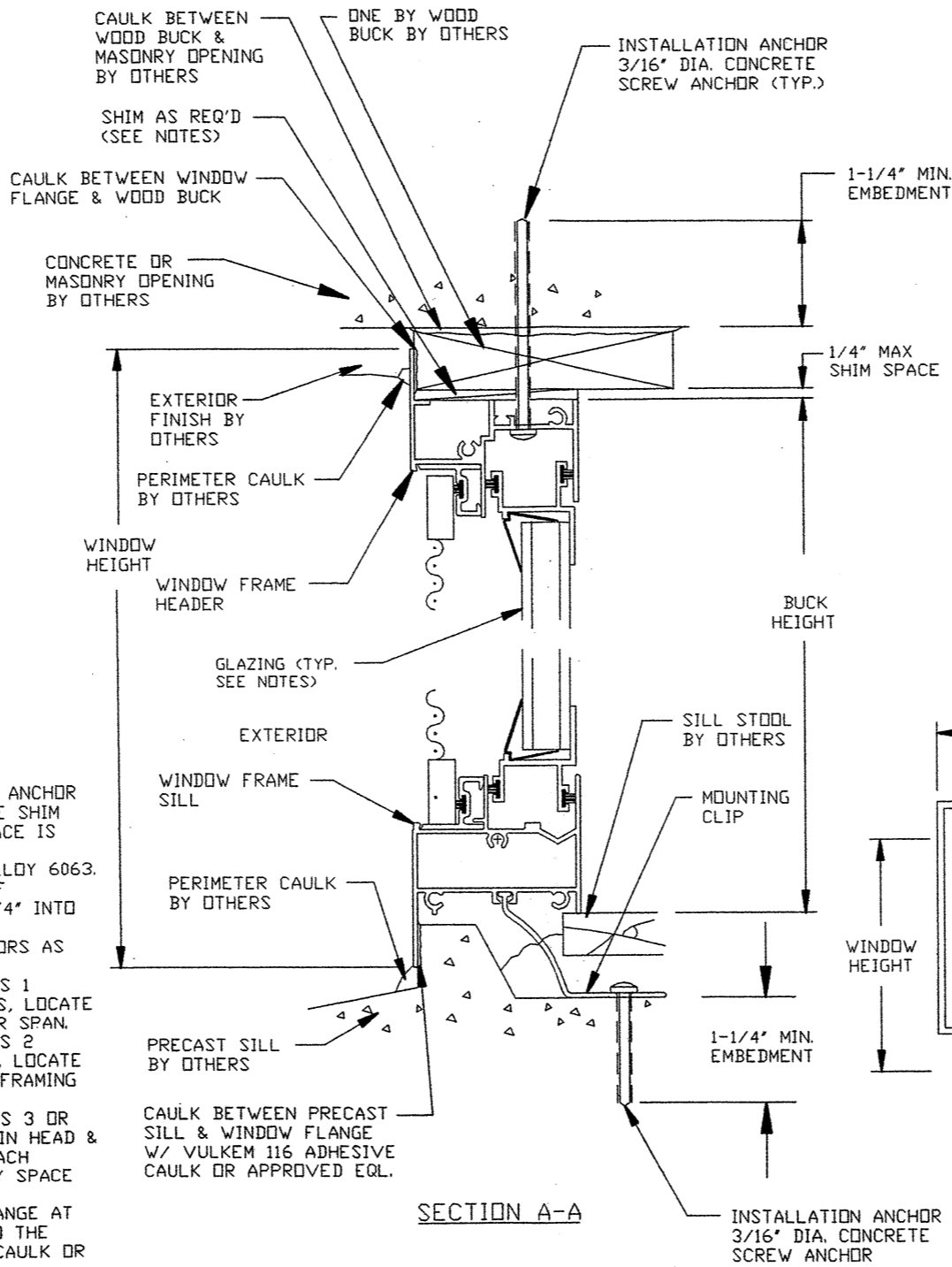
**ANCHOR QUANTITY CHART
OX & XO**

WINDOW SIZE IN INCHES	MIN. QUANTITY OF 3/16" DIA. CONCRETE ANCHORS REQ'D. FOR INSTALLATION	MIN. QUANTITY OF 3/16" DIA. CONCRETE ANCHORS REQ'D. FOR INSTALLATION
WIDTH X HEIGHT	@ HEAD & SILL	@ EA. JAMB
24 X 24	2	1
24 X 30	2	1
24 X 36	2	2
24 X 42	2	2
24 X 48	2	2
24 X 54	2	2
24 X 60	2	3
24 X 66	2	3
24 X 72	2	3
30 X 24	2	1
30 X 30	2	1
30 X 36	2	2
30 X 42	2	2
30 X 48	2	2
30 X 54	2	3
30 X 60	2	3
30 X 66	2	3
30 X 72	2	3
36 X 24	2	1
36 X 30	2	1
36 X 36	2	2
36 X 42	2	2
36 X 48	2	2
36 X 54	2	3
36 X 60	2	3
36 X 66	2	3
36 X 72	2	3
42 X 24	2	1
42 X 30	2	1
42 X 36	2	2
42 X 42	2	2
42 X 48	2	2
42 X 54	2	3
42 X 60	2	3
42 X 66	2	3
42 X 72	2	3
48 X 24	2	1
48 X 30	2	1
48 X 36	2	2
48 X 42	2	2
48 X 48	2	2
48 X 54	2	3
48 X 60	2	3
48 X 66	2	3
48 X 72	2	3
54 X 24	2	1
54 X 30	2	1
54 X 36	2	2
54 X 42	2	2
54 X 48	2	2
54 X 54	2	3
54 X 60	2	3
54 X 66	2	3
54 X 72	2	3
60 X 24	3	1
60 X 30	3	1
60 X 36	3	2
60 X 42	3	2
60 X 48	3	2
60 X 54	3	3
60 X 60	3	3
60 X 66	3	3
60 X 72	3	3
72 X 24	3	1
72 X 30	3	1
72 X 36	3	2
72 X 42	3	2
72 X 48	3	2
72 X 54	3	3
72 X 60	3	3
72 X 66	3	3
72 X 72	3	3

**ANCHOR QUANTITY CHART
XOX**

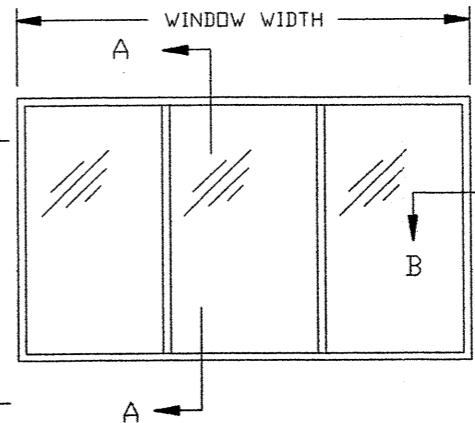
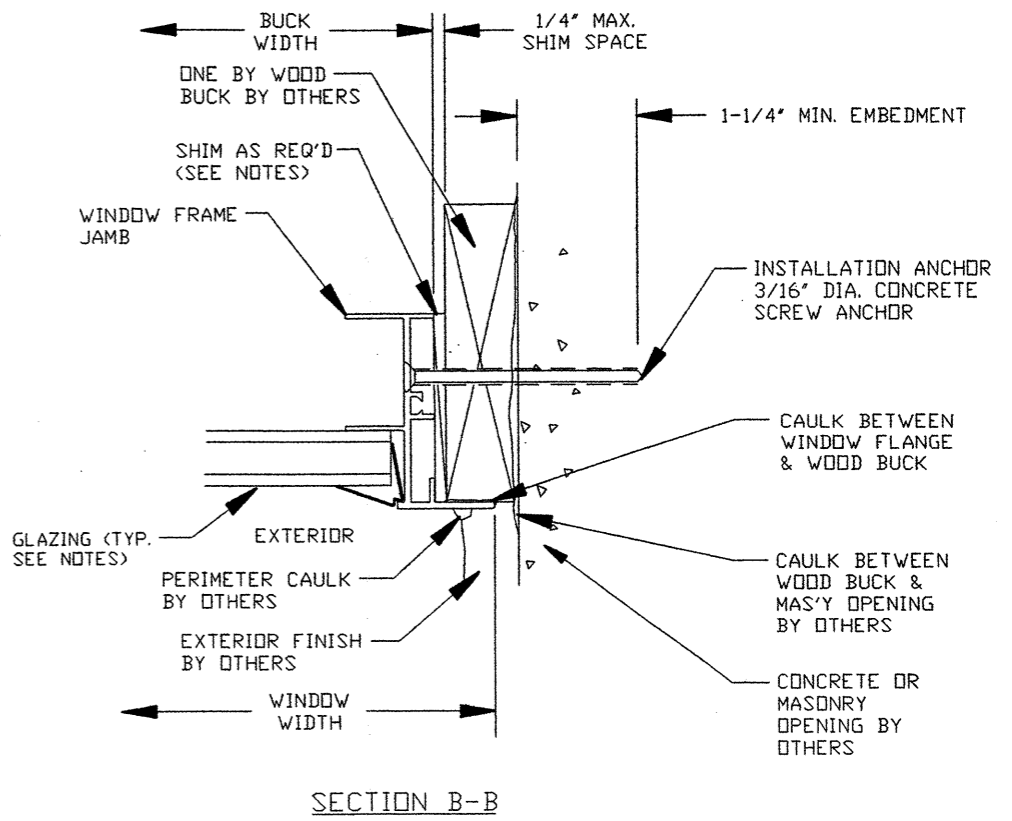
WINDOW SIZE IN INCHES	MIN. QUANTITY OF 3/16" DIA. CONCRETE ANCHORS REQ'D. FOR INSTALLATION	MIN. QUANTITY OF 3/16" DIA. CONCRETE ANCHORS REQ'D. FOR INSTALLATION
WIDTH X HEIGHT	@ HEAD & SILL	@ EA. JAMB
48 X 24	2	2
48 X 36	2	2
48 X 48	2	2
48 X 60	2	2
60 X 24	3	3
60 X 36	3	3
60 X 48	3	3
60 X 60	3	3
72 X 24	3	3
72 X 36	3	3
72 X 48	3	3
72 X 60	3	3
84 X 24	4	4
84 X 36	4	4
84 X 48	4	4
84 X 60	4	4
96 X 24	4	4
96 X 36	4	4
96 X 48	4	4
96 X 60	4	4
108 X 24	5	5
108 X 36	5	5
108 X 48	5	5
108 X 60	5	5
120 X 24	5	5
120 X 36	5	5
120 X 48	5	5
120 X 60	5	5

NOTES:
 1) SHIM AS REQ'D. AT EACH INSTALLATION ANCHOR WITH LOAD BEARING SHIM. MAX ALLOWABLE SHIM STACK TO BE 1/4". USE SHIMS WHERE SPACE IS GREATER THAN 1/16".
 2) WINDOW FRAME MATERIAL: ALUMINUM ALLOY 6063.
 3) CONCRETE SCREW ANCHORS MUST BE OF SUFFICIENT LENGTH TO ACHIEVE MIN. 1-1/4" INTO MASONRY OR CONCRETE.
 4) LOCATE CONCRETE INSTALLATION ANCHORS AS FOLLOWS:
 WHERE ANCHOR QUANTITY CHART INDICATES 1 CONCRETE INSTALLATION ANCHOR IN JAMBS, LOCATE ANCHOR AT MID POINT OF FRAMING MEMBER SPAN.
 WHERE ANCHOR QUANTITY CHART INDICATES 2 INSTALLATION ANCHORS IN HEAD & JAMBS, LOCATE ANCHORS WITHIN 6" OF EACH CORNER OF FRAMING MEMBER.
 WHERE ANCHOR QUANTITY CHART INDICATES 3 OR MORE INSTALLATION ANCHORS ARE REQ'D. IN HEAD & JAMBS, LOCATE ANCHORS WITHIN 6" OF EACH CORNER OF FRAMING MEMBER AND EQUALLY SPACE BETWEEN.
 5) USE LATEX CAULK BEHIND WINDOW FLANGE AT HEAD, JAMBS. SILL MUST BE ATTACHED TO THE SUBSTRATE WITH VULKEM 116 ADHESIVE CAULK OR APPROVED EQL.
 6) USE LATEX CAULK FOR PERIMETER SEAL AROUND EXTERIOR OF WINDOW FLANGE. 6) IF EXACT WINDOW SIZE IS NOT LISTED IN ANCHOR CHART, USE ANCHOR QUANTITY LISTED WITH NEXT LARGER SIZE.
 7) GLASS THICKNESS MAY VARY PER THE REQUIREMENTS OF ASTM E1300 GLASS CHARTS. INSULATING GLASS IS SHOWN, SINGLE GLAZING ALSO QUALIFIED.
 8) ALL FACTORY APPLIED HOLES NOT DESIGNATED FOR CONCRETE SCREW ANCHOR SHOULD BE FILLED WITH #8 SCREWS OF SUFFICIENT LENGTH TO PROVIDE MIN. OF 5/8" EMBEDMENT INTO WOOD BUCK.

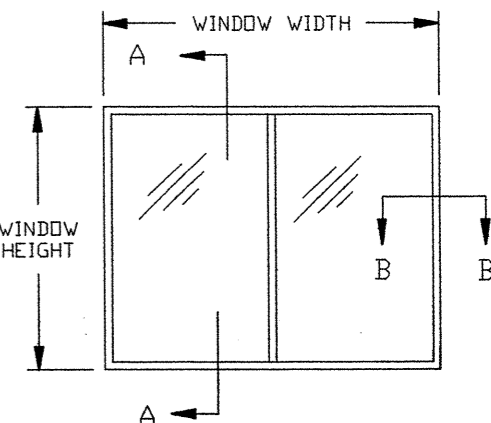


* MOUNTING CLIP TO BE 1-1/2" WIDE WITH WALL THICKNESS OF .058

MOUNTING CLIP



**EXTERIOR ELEVATION
XOX CONFIGURATION**



**EXTERIOR ELEVATION
XO & OX CONFIGURATION**

**DESIGN PRESSURE
CAPACITY = ±40.0 PSF**

**CUSTOM WINDOW SYSTEMS, INC.
OCALA, FLORIDA**

TITLE: SERIES 7000 FLG. HR ALUMINUM WINDOW INSTALLATION DETAILS ONE BY BUCK		
ENGINEER: MANUEL MARTINEZ	DRN: BB	DATE: 2/22/02
DISCIPLINE: CIVIL	SCALE: N.T.S.	DWG. NO: CWS0116
FL. REG. NO: 47182	REV. LETTER:	SHEET: 1 OF 1