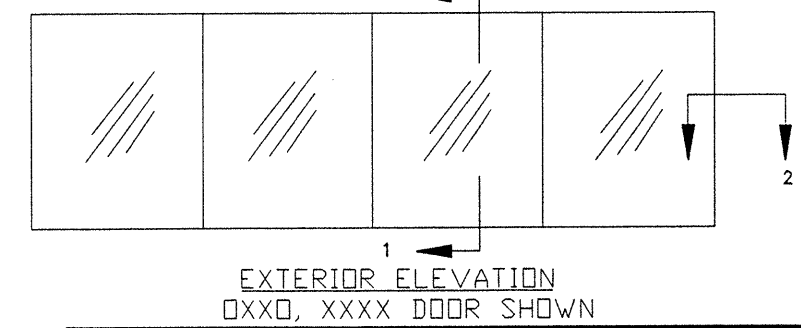


		CONCRETE SCREW ANCHOR CHART								
CALL SIZE	OVERALL SIZE	@ HEAD & @ SILL			IN EA. JAMB			IN HOOK STRIP		
		UP TO 45 PSF	46 PSF TO 60 PSF	61 PSF TO 70 PSF	UP TO 45 PSF	46 PSF TO 60 PSF	61 PSF TO 70 PSF	UP TO 45 PSF	46 PSF TO 60 PSF	61 PSF TO 70 PSF
5068	OX, OX, XX	3	3	3	3	3	3	4	4	4
6068	OX, OX, XX	4	4	4	3	3	6	3	4	5
8068	OX, OX, XX	5	5	5	3	3	6	3	4	5
10068	OX, OX, XX	6	6	7	3	3	6	3	4	5
9068	OXO	6	6	6	3	3	6	3	4	5
12068	OXO	7	7	9	3	3	6	3	4	5
15068	OXO	9	10	11	3	3	6	3	4	5
10068	OXOX, XXXX	6	6	7	3	3	6	3	4	5
12068	OXOX, XXXX	7	7	8	3	3	6	3	4	5
16068	OXOX, XXXX	9	10	12	3	3	6	3	4	5
20068	OXOX, XXXX	11	14	16	3	3	6	3	4	5
5080	OX, OX, XX	3	3	3	6	6	6	4	5	6
6080	OX, OX, XX	4	4	4	6	6	6	4	5	6
8080	OX, OX, XX	5	5	5	6	6	6	4	6	6
10080	OX, OX, XX	6	6	7	6	6	6	4	6	6
9080	OXO	6	6	6	6	6	6	4	6	6
12080	OXO	7	8	9	6	6	6	4	6	6
15080	OXO	9	11	13	6	6	6	4	6	6
10080	OXOX, XXXX	6	6	7	6	6	6	4	6	6
12080	OXOX, XXXX	7	8	9	6	6	6	4	6	6
16080	OXOX, XXXX	9	12	14	6	6	6	4	6	6
20080	OXOX, XXXX	12	16	18	6	6	6	4	6	6

- NOTES:
- 1) SHIM AS REQ'D. AT EA. SET OF INSTALLATION ANCHORS USING LOAD BEARING SHIM. MAX. ALLOWABLE SHIM STACK TO BE 1/4". USE SHIMS WHERE SPACE GREATER THAN 1/16" IS PRESENT.
  - 2) DOOR MATERIAL: ALUMINUM ALLOY 6063.
  - 3) 3/16" DIA. CONCRETE SCREW ANCHOR MUST BE OF SUFFICIENT LENGTH TO ACHIEVE MIN. EMBEDMENT OF 1-1/4" INTO MASONRY OR CONCRETE. (TYP. LENGTH 2-3/4")
  - 4) MAX ALLOWABLE SPACING @ HEAD & SILL BETWEEN CONCRETE SCREW ANCHORS TO BE 24" O.C.
  - 5) ALL FACTORY APPLIED INSTALLATION HOLES NOT DESIGNED FOR CONCRETE SCREW ANCHOR SHOULD BE FILLED WITH #10 SCREWS OF SUFFICIENT LENGTH TO PROVIDE MIN. 5/8" EMBEDMENT INTO WOOD BUCK.
  - 6) USE LATEX CAULK OR EQUIVALENT FOR PERIMETER SEAL AROUND EXTERIOR OF DOOR BY OTHERS.
  - 7) IF EXACT DOOR SIZE IS NOT LISTED IN ANCHOR CHART, USE ANCHOR QUANTITY LISTED WITH NEXT LARGER SIZE, FOR THE APPROPRIATE DESIGN PRESSURE REQ'D.
  - 8) FOR POCKET DOOR SIZES USE CLOSEST BYPASS DOOR SIZE & CONFIGURATION TO FINISHED OPENING. PLACE CONCRETE SCREW ANCHORS IN FRONT OF HOOK STRIP AS SHOWN.
  - 9) GLASS THICKNESS MAY VARY PER REQUIREMENTS OF ASTM E1300 GLASS CHARTS. SINGLE GLAZING IS SHOWN, INSULATING GLASS ALSO QUALIFIED.
  - 10) JAMB, SILL CORNERS AND ALL ANCHORS THROUGH SILL ARE TO BE SEALED WITH A SMALL JOINT SEAM SEALER.
  - 11) ALL INSTALLATION ANCHORS MUST BE MADE OF CORROSION RESISTANT MATERIALS.
  - 12) NOT ALL CONFIGURATIONS LISTED ABOVE ARE SHOWN ON THIS DRAWING, HOWEVER, INSTALLATION SECTIONS 1, SECTION 2, & HOOK STRIP DETAIL APPLY TO INSTALLATION OF ALL CONFIGURATIONS.
  - 13) KINCO SERIES MARK 2, SLIDING GLASS DOOR IS SHOWN. THIS PRINT ALSO APPLIES TO SERIES MARK 3, MARK 4 & MARK 5.



**KINCO, LTD.**  
JACKSONVILLE, FLORIDA

TITLE: SLIDING GLASS DOOR W/ONE BY WOOD BUCK  
OX / XX / OXO / OXOX & XXXX INSTALLATION DETAIL

ENGINEER: MANUEL MARTINEZ	DRN: BB	DATE: 12/4/01
DISCIPLINE: CIVIL	SCALE: N.T.S.	DWG. NO: KJAX0077
FL. REG. NO: 47182	REV. LETTER:	SHEET: 1 OF 1