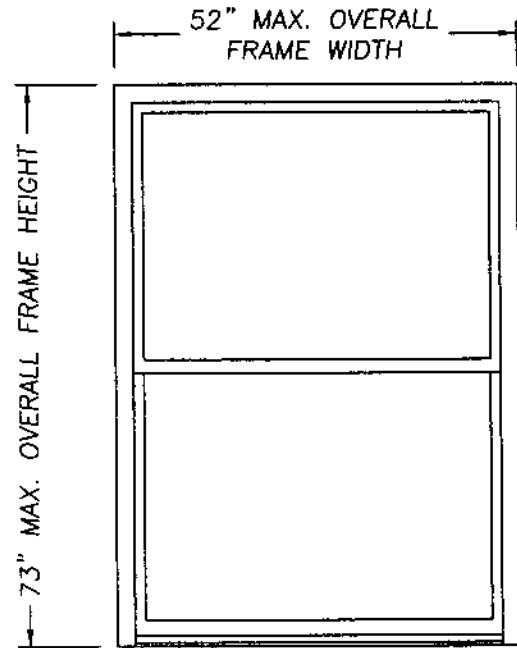
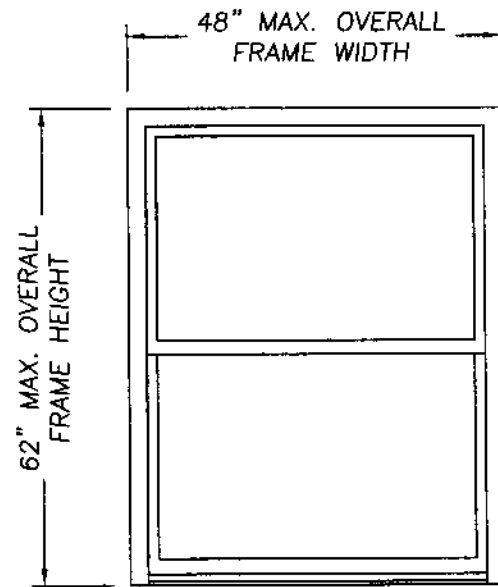


Silverline Building Products Corp.

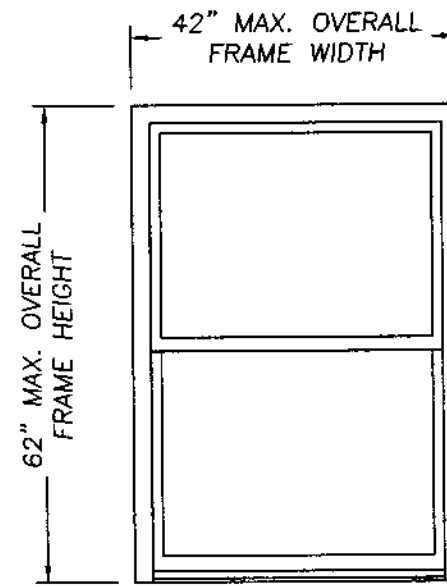
SILVERLINE 2100 SERIES MODEL 2110
EXTRUDED VINYL SINGLE HUNG WINDOWS



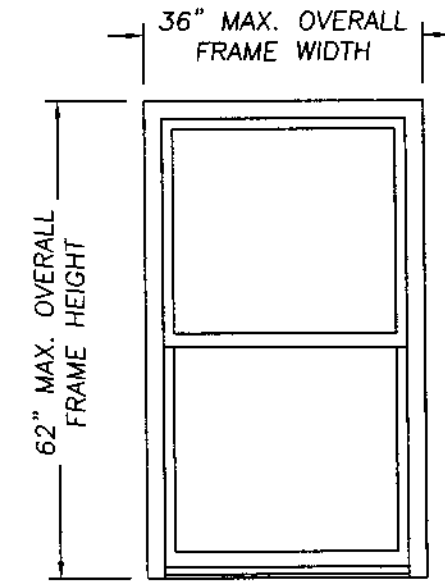
0
x



0
x



0
x



0
x

DESIGN PRESSURE RATING
POS. 25.0 NEG. 25.0

GLASS TABLE
5/8" INSULATED GLASS
1/8" ANN. - AIR SPACE - 1/8" ANN.

DESIGN PRESSURE RATING
POS. 30.0 NEG. 30.0

GLASS TABLE
5/8" INSULATED GLASS
1/8" ANN. - AIR SPACE - 1/8" ANN.

(ACHIEVED BY COMPARISON ANALYSIS)

DESIGN PRESSURE RATING
POS. 35.0 NEG. 35.0

GLASS TABLE
5/8" INSULATED GLASS
1/8" ANN. - AIR SPACE - 1/8" ANN.

(ACHIEVED BY COMPARISON ANALYSIS)

DESIGN PRESSURE RATING
POS. 45.0 psf NEG. 45.0 psf

GLASS TABLE
5/8" INSULATED GLASS
1/8" ANN. - AIR SPACE - 1/8" ANN.

GENERAL NOTES

- THIS PRODUCT IS DESIGNED TO COMPLY WITH THE FLORIDA BUILDING CODE.
- PRODUCT ANCHORS SHALL BE AS LISTED AND SPACED AS SHOWN ON DETAILS.
- WHEN THIS PRODUCT IS USED IN AN AREA REQUIRING WINDBORNE DEBRIS PROTECTION, FLORIDA BUILDING CODE APPROVED IMPACT RESISTANT SHUTTERS ARE REQUIRED.
- MASONRY ANCHORING FOR 1x BUCK SEE SHEET 2 OF 3.
- MASONRY ANCHORING FOR 2x BUCK SEE SHEET 3 OF 3.

PRODUCT DESCRIPTION

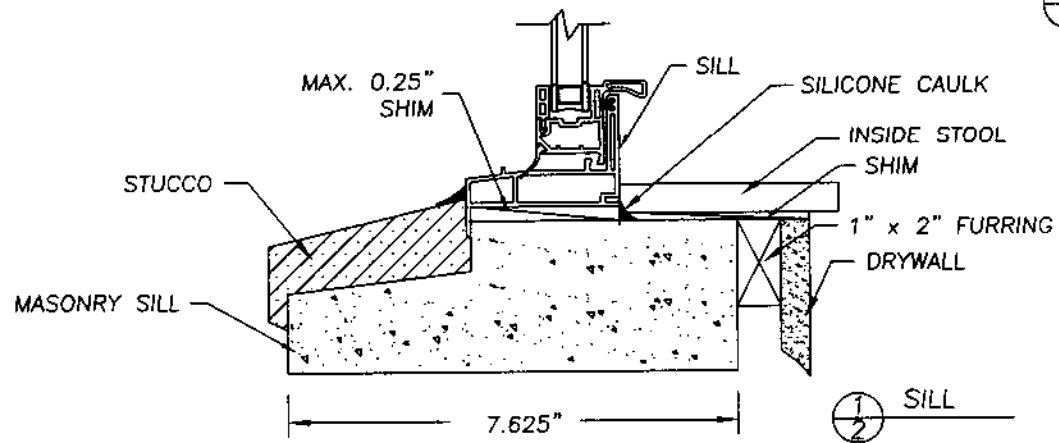
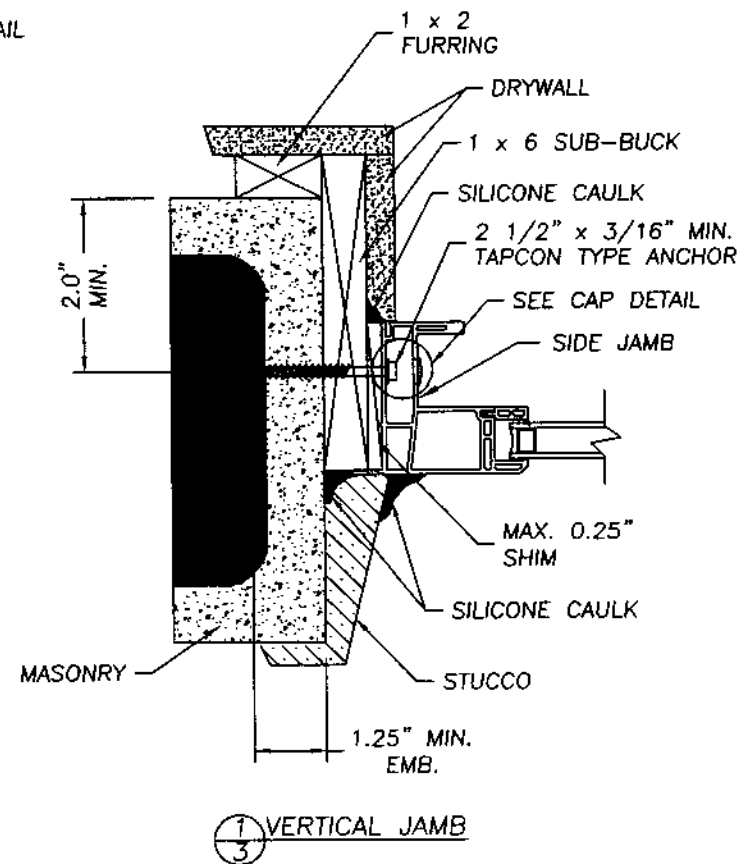
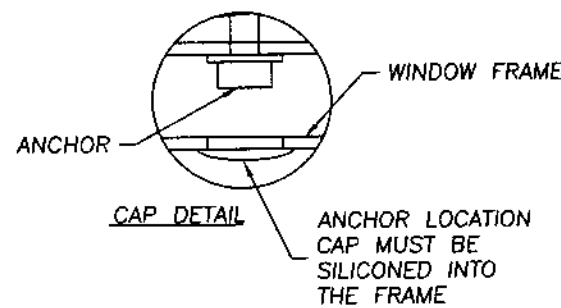
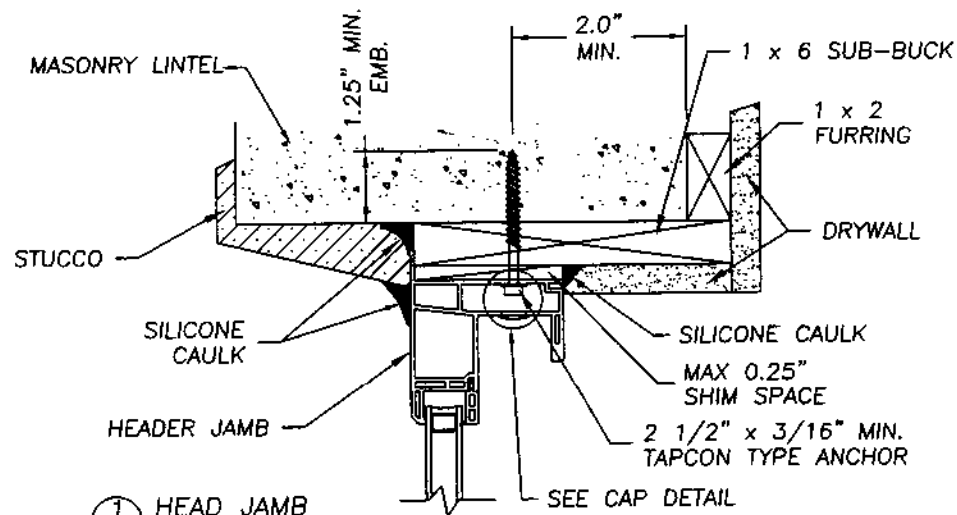
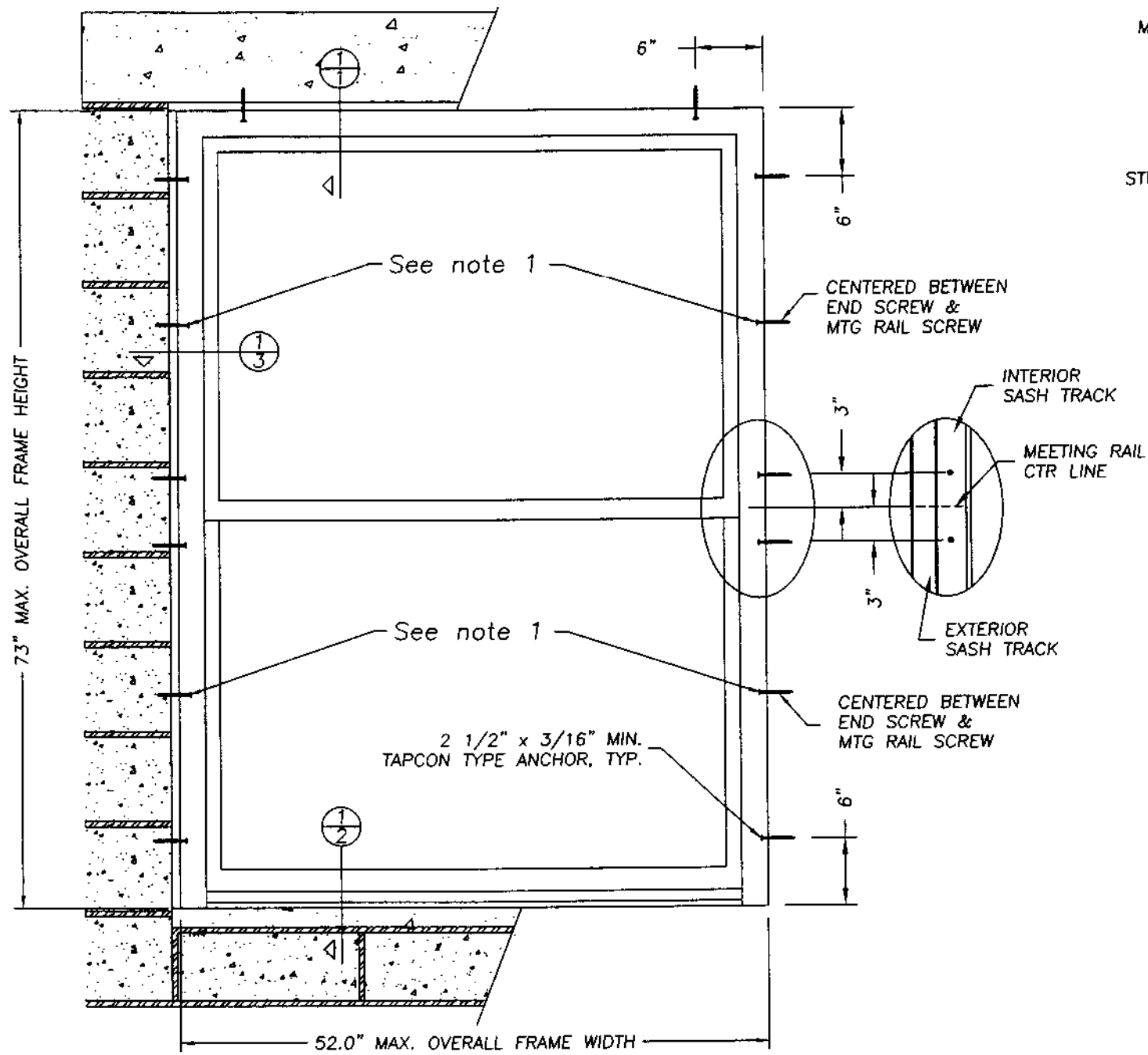
- VINYL SINGLE HUNG WINDOW WITH MITERED AND WELDED CORNERS.
- THE HEAD AND SIDE JAMBS ARE EXTRUDED VINYL WITH AN EXTERIOR WALL THICKNESS OF 0.070" +/- 0.008".
- ALL ACTIVE SASH MEMBERS REINFORCED WITH SOLID ALUMINUM BAR STOCK.
- THE FIXED MEETING RAIL UTILIZES A ROLLED FORMED STEEL REINFORCEMENT.

Lyndon F. Schmidt
 Florida P. E. No. 43409
 19506 French Lace Drive Lutz, FL 33558

Silverline Building Products Corp.
 One Silverline Drive
 North Brunswick, NJ 08902
 PH. 732.435.1000

PRODUCT:	SILVERLINE EXTRUDED VINYL SINGLE HUNG WINDOW		
PART OR ASSEMBLY:	GENERAL NOTES & TYPICAL ELEVATIONS		
NO.	DATE	BY	REVISIONS

 RW BUILDING CONSULTANTS, INC. 813.659.9197
DATE: 09/23/02
SCALE: N.T.S.
DWG. BY: TJH
CHK. BY: RW
DRAWING NO.: SL-403-OC
SHEET 1 OF 3



APPLY A GENEROUS BEAD OF COMMERCIAL GRADE CONSTRUCTION ADHESIVE TO BOTH THE BACK OF THE FLANGE AND THE MAIN BODY OF THE WINDOW FRAME AROUND THE FULL PERIMETER AS SHOWN.

NOTE:

1. When installing a window that is 60" or less in overall height, eliminate the installation of this screw.
2. Adjust Tapcon anchor locations, if necessary, to maintain a minimum 2.0" clearance from mortar joints.

September 24, 2002

Lyndon F. Schmidt
Florida P. E. No. 43489
19506 French Lace Drive
Lutz, FL 33558

Silverline Building Products Corp.
One Silverline Drive
North Brunswick, NJ 08902
PH. 732.435.1000

ANCHORING CROSS SECTIONS
FOR 1X BUCK TO MASONRY
SINGLE HUNG W/OUT NAILING FIN
EXTRUDED VINYL WINDOW

RW BUILDING
CONSULTANTS, INC.
813.659.9197

DATE: 09/23/02

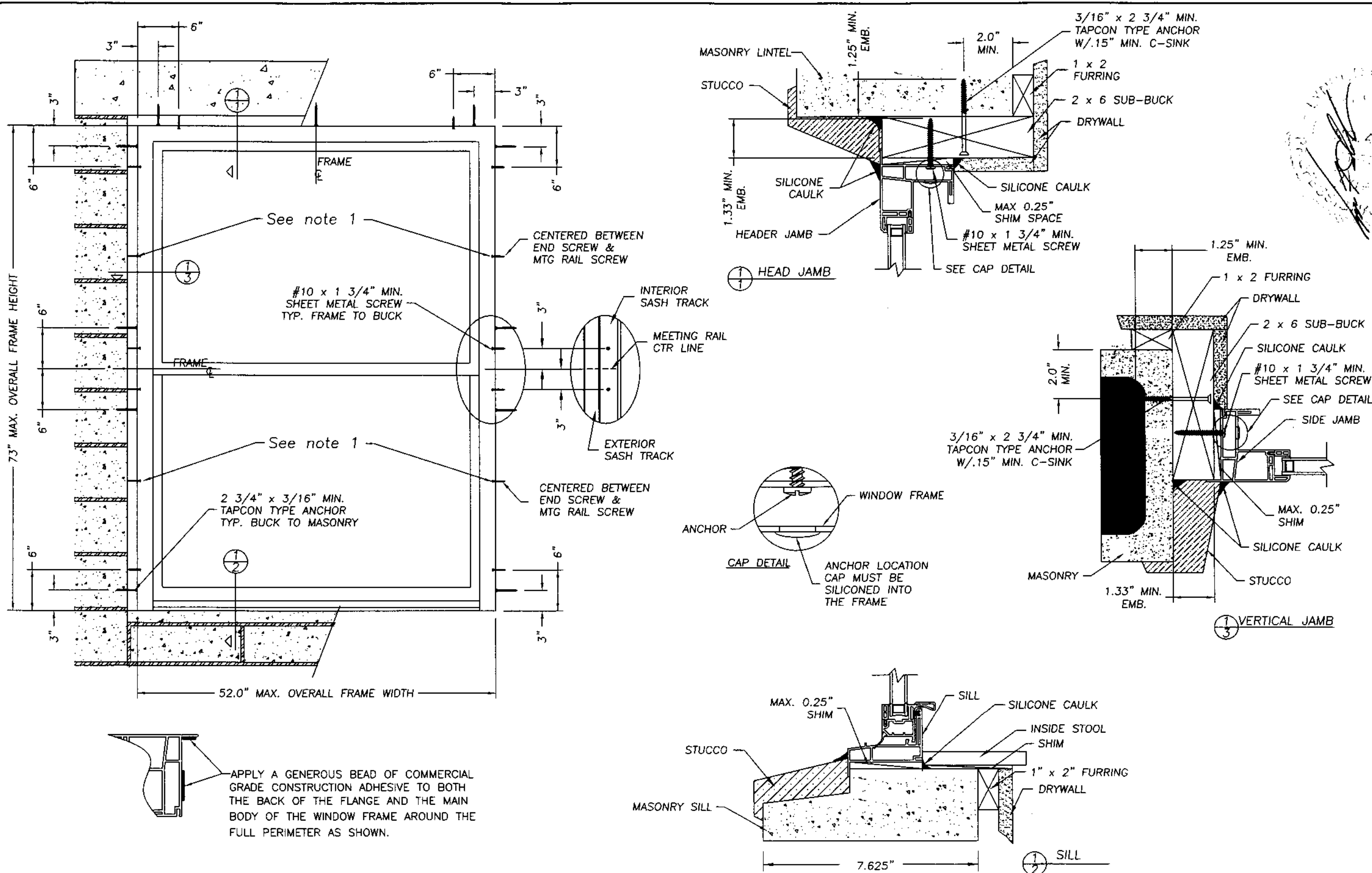
SCALE: N.T.S.

DWG. BY: TJH

CHK. BY: R.W.

DRAWING NO.:
SL-403-OC

SHEET 2 OF 3



APPLY A GENEROUS BEAD OF COMMERCIAL GRADE CONSTRUCTION ADHESIVE TO BOTH THE BACK OF THE FLANGE AND THE MAIN BODY OF THE WINDOW FRAME AROUND THE FULL PERIMETER AS SHOWN.

- NOTE:**
1. When installing a window that is 60" or less in overall height, eliminate the installation of this screw.
 2. Adjust Tapcon anchor locations, if necessary, to maintain a minimum 2.0" clearance from mortar joints.

September 24, 2002
 Lyndon F. Schmidt
 Florida, P. E. No. 43409
 19506 French Lace Drive
 Lutz, FL 33558

Silverline Building Products Corp.
 One Silverline Drive
 North Brunswick, NJ 08902
 PH. 732.435.1000

ANCHORING CROSS SECTIONS
 FOR 2X BUCK TO MASONRY
 SINGLE HUNG W/OUT NAILING FIN
 EXTRUDED VINYL WINDOW

RW BUILDING CONSULTANTS, INC. 813.659.9197
DATE: 09/23/02
SCALE: N.T.S.
DWG. BY: TJH
CHK. BY: R.W.
DRAWING NO.: SL-403-OC
SHEET 3 OF 3