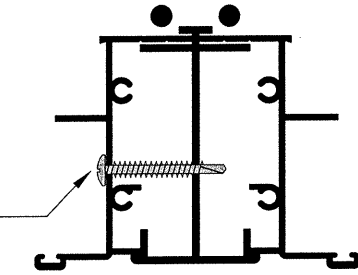


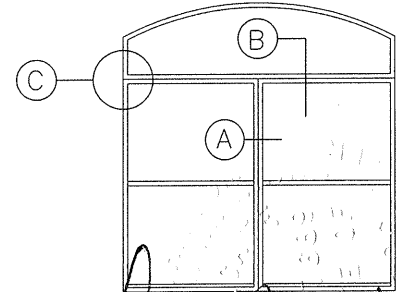
#10 X 2" Panhead
Philips
Machine Screw
w/Nut



#8 X 1/4"
Panhead Philips
Self-drilling Screw

(A) Vertical Mullbar

(B) Horizontal Mullbar



Vertical Design Loads (± psf)

Mull Height → Win. Width ↓	37"	45"	53.125"	60"	74"	79.5"	90"	110"
24"	+/-80.0	+/-80.0	+/-80.0	+/-80.0	+/-80.0	+/-80.0	+/-80.0	+/-80.0
30 3/8"	+/-80.0	+/-80.0	+/-80.0	+/-80.0	+/-80.0	+/-80.0	+/-80.0	+/-80.0
36"	+/-80.0	+/-80.0	+/-80.0	+/-80.0	+/-80.0	+/-80.0	+/-80.0	+/-80.0
42"	+/-80.0	+/-80.0	+/-80.0	+/-80.0	+/-80.0	+/-80.0	+/-80.0	+/-80.0
50.625"	+/-52.7	+/-47.9	+/-45.5	+/-45.0	+/-45.0	+/-45.0	+/-45.0	+/-45.0
60"	+/-44.6	+/-40.3	+/-37.9	+/-37.1	+/-37.0	+/-37.0	+/-37.0	+/-37.0

James B. Whittum
MAR 06 2002
James B. Whittum, P.E.
 FL # 0027689
 7519 Oakvista Cir.
 Tampa, Florida 33634
 813-889-7977

Horizontal Design Loads (± psf)

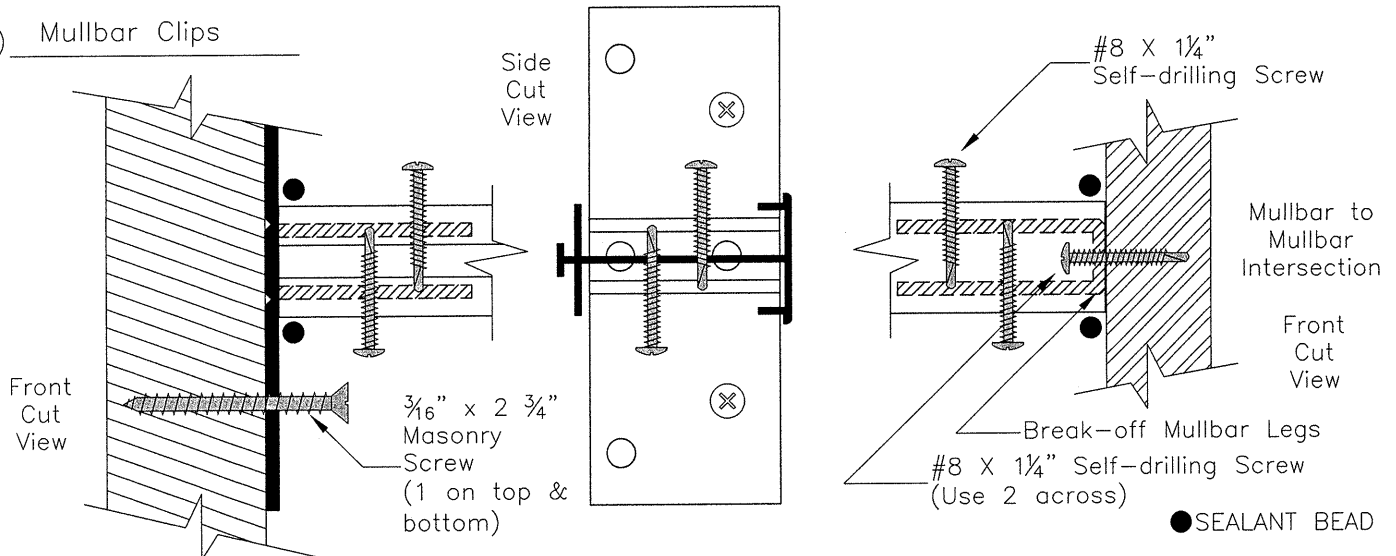
Mull Span → Win. Height ↓	37"	45"	53.125"	60"	74"
24"	+/-80.0	+/-80.0	+/-80.0	+/-70.2	+/-35.7
30 3/8"	+/-80.0	+/-80.0	+/-80.0	+/-59.4	-
36"	+/-80.0	+/-80.0	+/-80.0	+/-53.5	-
42"	+/-80.0	+/-80.0	+/-76.5	+/-49.4	-
50.625"	+/-80.0	+/-80.0	+/-73.3	+/-46.1	-
60"	+/-80.0	+/-80.0	+/-73.1	+/-45.0	-
63"	+/-80.0	+/-80.0	+/-73.1	+/-45.0	-
72"	+/-80.0	+/-80.0	+/-73.1	+/-45.0	-
84"	+/-80.0	+/-80.0	+/-73.1	+/-45.0	-
96"	+/-80.0	+/-80.0	+/-73.1	+/-45.0	-

Mullbar Screw Schedule

Mullbar	Orientation	Color/Part #	# of Bags	Bag Contents
948	Horizontal	White (2CBFLW)	1 if under 72"	#8 X 1-1/4" Self-Drilling Screw (2)
		Bronze (2CBFLB)	2 if under 72"	
		Mill (2CBFLM)		
948	Vertical	29MULM-2	1 if under 52"	#8 X 1-1/4" Self-Drilling Screw (2) #10 x 2" Bolt w/Nut (2)
948	Vertical	29MULM-3	1 if 52" and over	#8 X 1-1/4" Self-Drilling Screw (4) #10 x 2" Bolt w/Nut (2)

Mullbar design pressures calculated using beam analysis [$I = 175(F)L^2/76.8(E)$], a deflection maximum of the length divided by 175, without window frame members, inertia of 0.461 and a maximum design pressure of ±80.0 psf.

(C) Mullbar Clips



Suggested installation only. Since local building codes vary, the applicable method of installation is the responsibility of the building contractor.