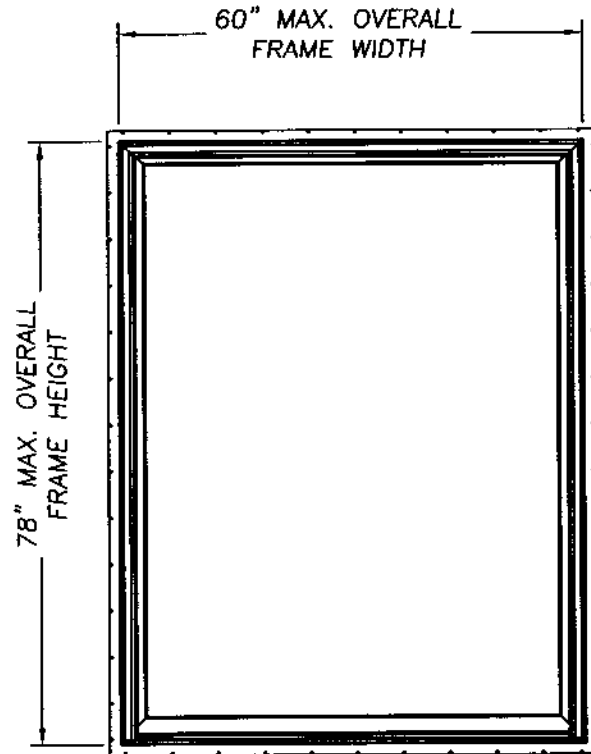


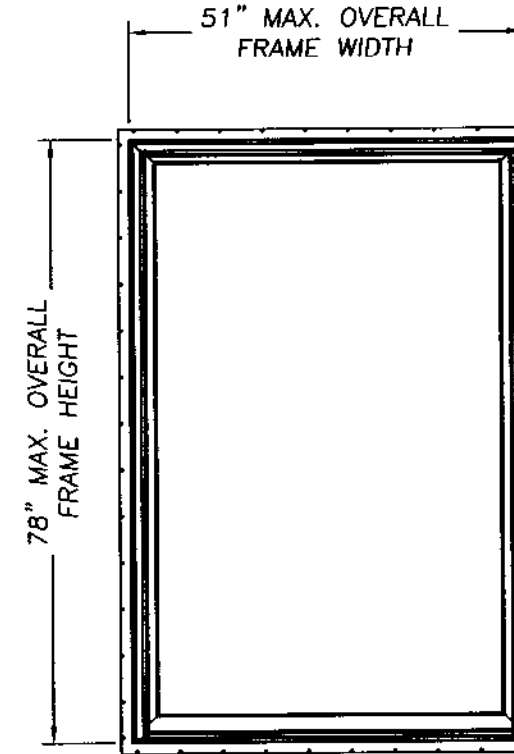
EAGLE WINDOW & DOOR

ALUMINUM CLAD FIXED DOUBLE HUNG WINDOW W/ NAILING FIN



DESIGN PRESSURE RATING
POS. 40.0 NEG. 40.0

GLASS TABLE
3/4" INSULATED GLASS
3/16" ANN. - AIR SPACE- 3/16" ANN.



DESIGN PRESSURE RATING
POS. 40.0 NEG. 47.0

GLASS TABLE
3/4" INSULATED GLASS
3/16" ANN. - AIR SPACE- 3/16" ANN.

GENERAL NOTES

1. THIS PRODUCT IS DESIGNED TO COMPLY WITH THE FLORIDA BUILDING CODE.
2. PRODUCT ANCHORS SHALL BE AS LISTED AND SPACED AS SHOWN ON DETAILS.
3. WHEN THIS PRODUCT IS USED IN AN AREA REQUIRING WINDBORNE DEBRIS PROTECTION, FLORIDA BUILDING CODE APPROVED IMPACT RESISTANT SHUTTERS ARE REQUIRED.
4. MASONRY ANCHORING FOR 2x BUCK SEE SHEET 2 OF 3.
5. ANCHORING TO STUD SEE SHEET 3 OF 3.

PRODUCT DESCRIPTION

1. ALUMINUM CLAD WINDOW WITH SASH CORNERS MORTISE AND TENON CONSTRUCTION.
2. THE WOOD FRAME IS LAMINATED VENEER LUMBER WITH SQUARE CUT CORNERS. THE CLADDING CORNERS ARE MITER CUT.
3. ALL UNITS UTILIZE AN EXTRUDED PVC NAILING FIN WHICH IS PRESS FIT INTO THE FRAME.

Lyndon F. Schmidt
 September 24, 2002

Lyndon F. Schmidt
 Florida P. E. No. 43409
 19506 French Lace Drive Lutz, FL 33558

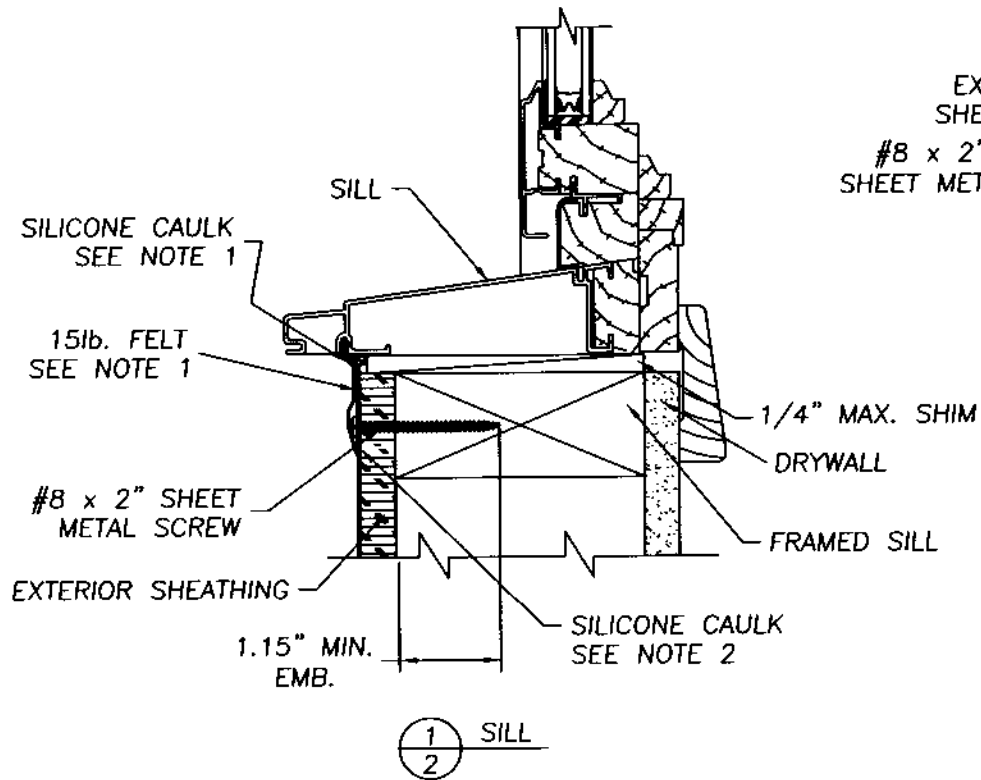
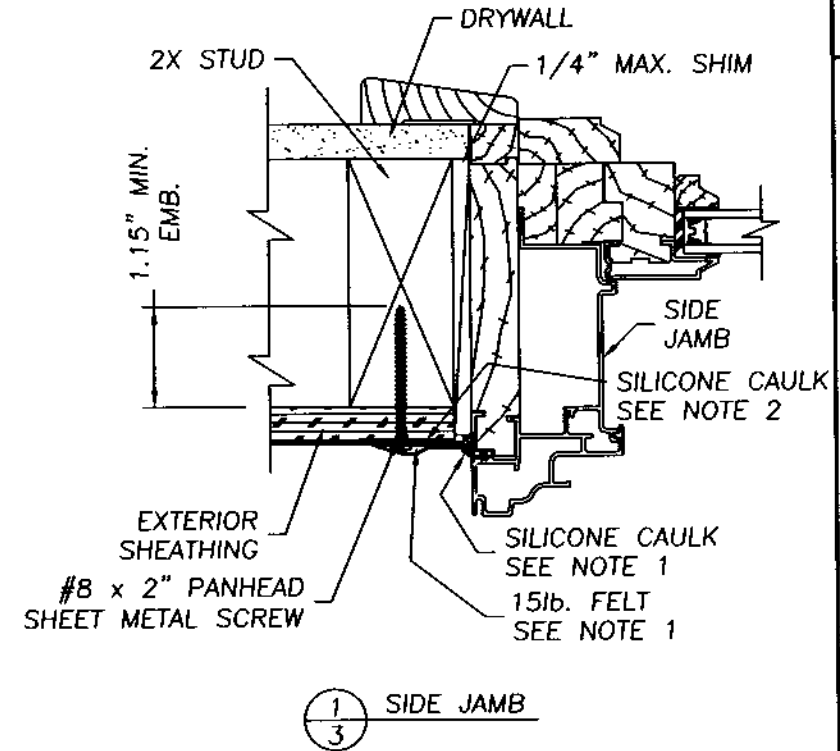
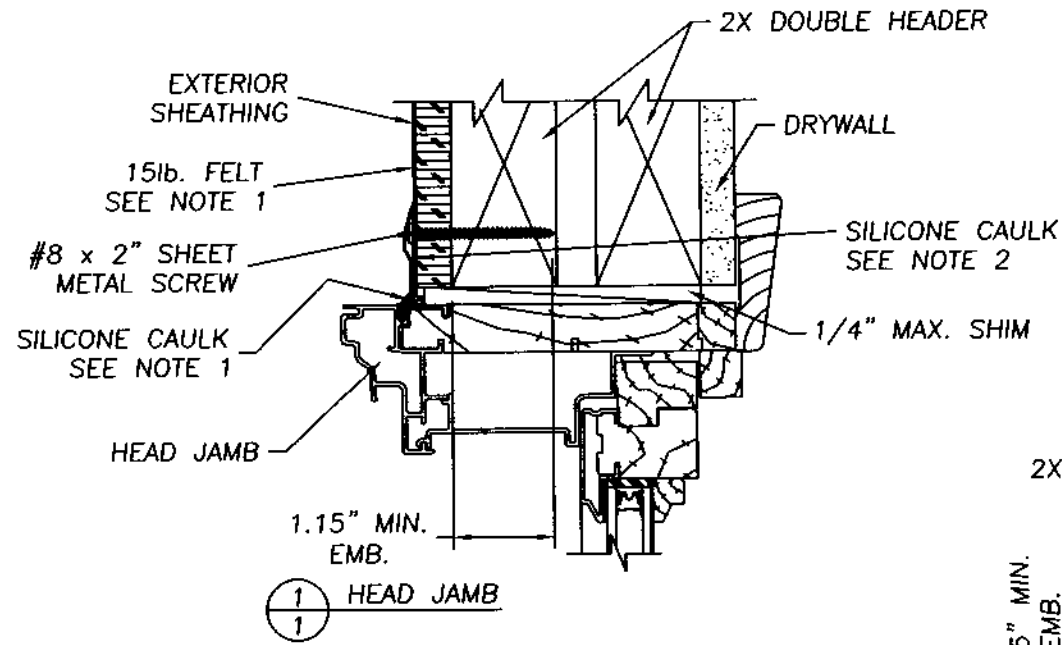
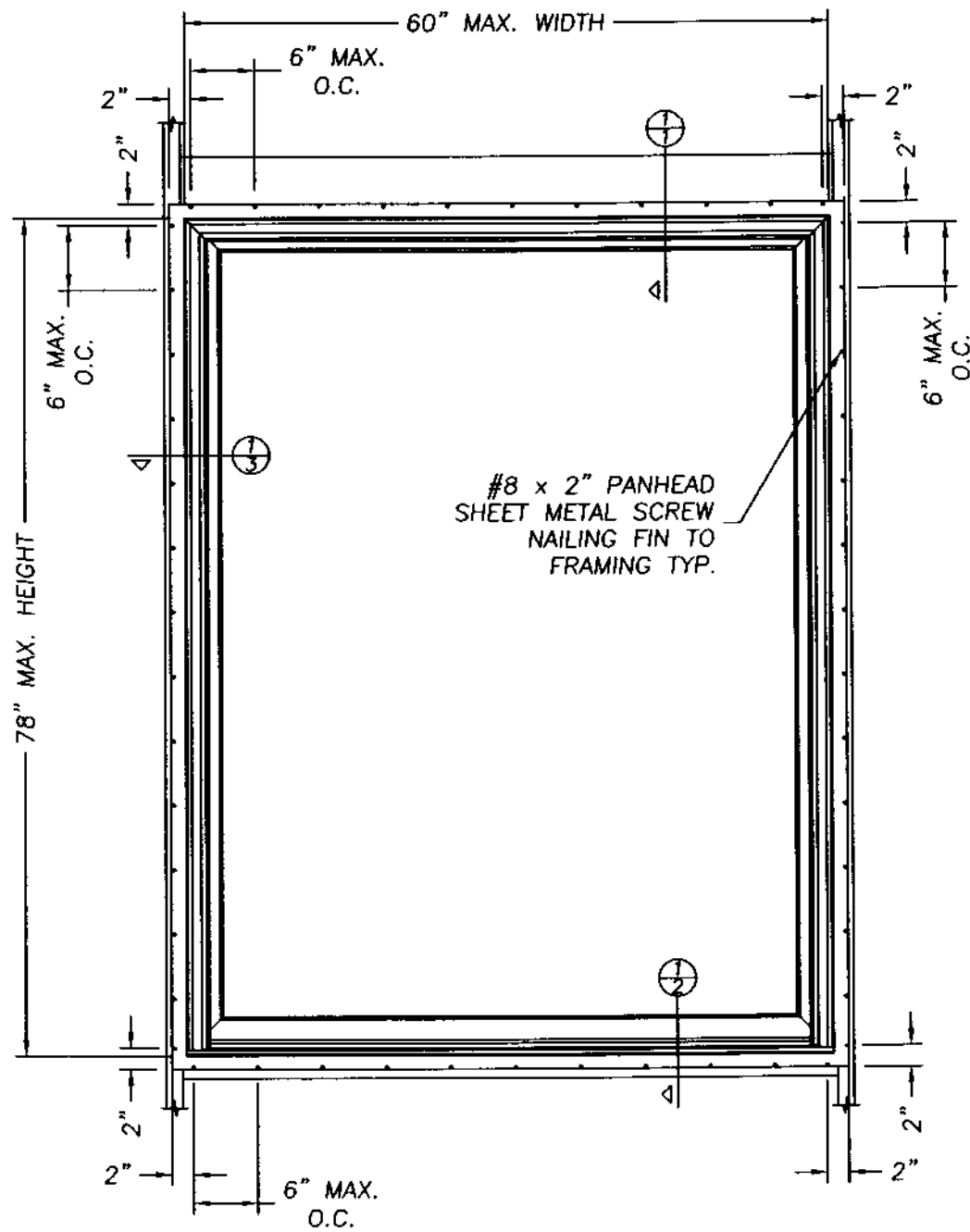
EAGLE WINDOW & DOOR, INC.
 2045 KERPER BOULEVARD
 DUBUQUE, IA 52004-1072
 PH. 319.556.4408

PRODUCT:
 EAGLE WINDOW & DOOR
 ALUMINUM CLAD
 FIXED DOUBLE HUNG WINDOW
 PART OR ASSEMBLY:
 GENERAL NOTES &
 TYPICAL ELEVATIONS

NO.	DATE	REVISIONS	BY

RW BUILDING
 CONSULTANTS, INC.
 813.659.9197

DATE: 9/23/02
 SCALE: N.T.S.
 DWG. BY: WLN
 CHK. BY: RW
 DRAWING NO.:
 EGL-102-OC
 SHEET 1 OF 3



NOTE:

1. 15lbs. felt must be used as a water barrier. The felt must cover the nailing fin and anchor screw heads. All loose edges of the felt paper must be sealed with silicone caulk.
2. The full perimeter of the window nailing fin must have a heavy bead of caulk applied to the building side before the window is placed in the opening.

September 24, 2002

Lyndon F. Schmidt
 Florida P. E. No. 43409
 19506 French Lace Drive
 Lutz, FL 33558

EAGLE WINDOW & DOOR, INC.
 2045 KERPER BOULEVARD
 DUBUQUE, IA 52004-1072
 PH. 319.556.4408

ANCHORING CROSS SECTIONS
 FOR WOOD CONSTRUCTION
 ALUMINUM CLAD DOUBLE
 HUNGE PICTURE WINDOW

RW BUILDING
 CONSULTANTS, INC.
 813.659.9197

DATE: 9/23/02

SCALE: N.T.S.

DWG. BY: WLN

CHK. BY: RW

DRAWING NO.:
 EGL-102-OC

SHEET 3 OF 3