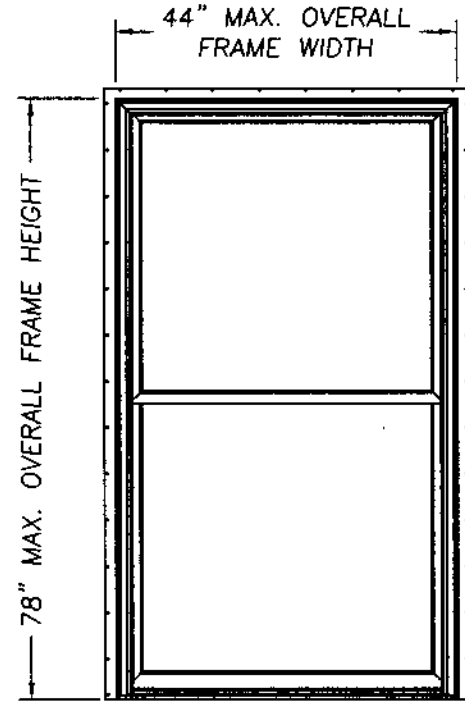


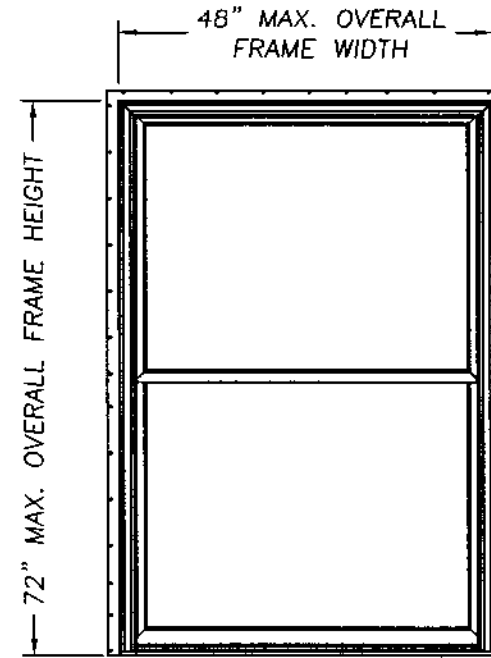
EAGLE WINDOW & DOOR

ALUMINUM CLAD DOUBLE HUNG TILT WOOD WINDOW W/ NAILING FIN



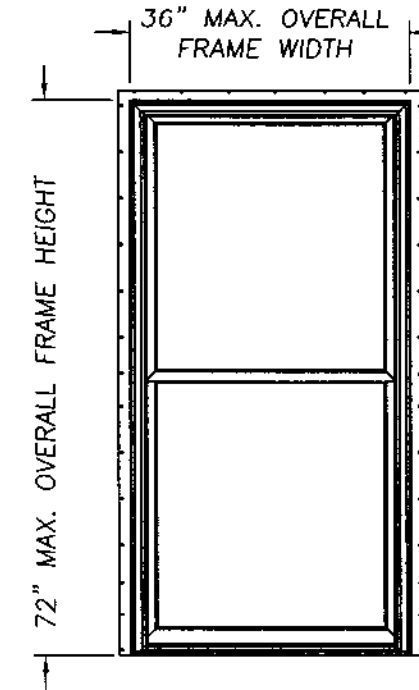
DESIGN PRESSURE RATING
POS. 47.0 NEG. 47.0

GLASS TABLE
5/8" INSULATED GLASS
1/8" ANN. - AIR SPACE- 1/8" ANN.



DESIGN PRESSURE RATING
POS. 47.0 NEG. 47.0

GLASS TABLE
5/8" INSULATED GLASS
1/8" ANN. - AIR SPACE- 1/8" ANN.



DESIGN PRESSURE RATING
POS. 60.0 NEG. 60.0

GLASS TABLE
5/8" INSULATED GLASS
1/8" ANN. - AIR SPACE- 1/8" ANN.

GENERAL NOTES

1. THIS PRODUCT IS DESIGNED TO COMPLY WITH THE FLORIDA BUILDING CODE.
2. PRODUCT ANCHORS SHALL BE AS LISTED AND SPACED AS SHOWN ON DETAILS.
3. WHEN THIS PRODUCT IS USED IN AN AREA REQUIRING WINDBORNE DEBRIS PROTECTION, FLORIDA BUILDING CODE APPROVED IMPACT RESISTANT SHUTTERS ARE REQUIRED.
4. ANCHORING FOR A 2x BUCK TO MASONRY WITH NAILING FIN INSTALLATION SEE SHEET 2 OF 3.
5. ANCHORING FOR WOOD STUD CONSTRUCTION WITH NAILING FIN INSTALLATION SEE SHEET 3 OF 3.

PRODUCT DESCRIPTION

1. ALUMINUM CLAD WINDOW WITH SASH CORNERS MORTISE AND TENON CONSTRUCTION.
2. THE WOOD FRAME IS LAMINATED VENEER LUMBER WITH SQUARE CUT CORNERS AND CLADDING CORNERS ARE MITER CUT.
3. ALL UNITS UTILIZE AN EXTRUDED PVC NAILING FIN WHICH IS PRESS FIT INTO THE FRAME.

September 24, 2002

Lyndon F. Schmidt
Florida P. E. No. 43409
19506 French Lace Drive Lutz, FL 33558

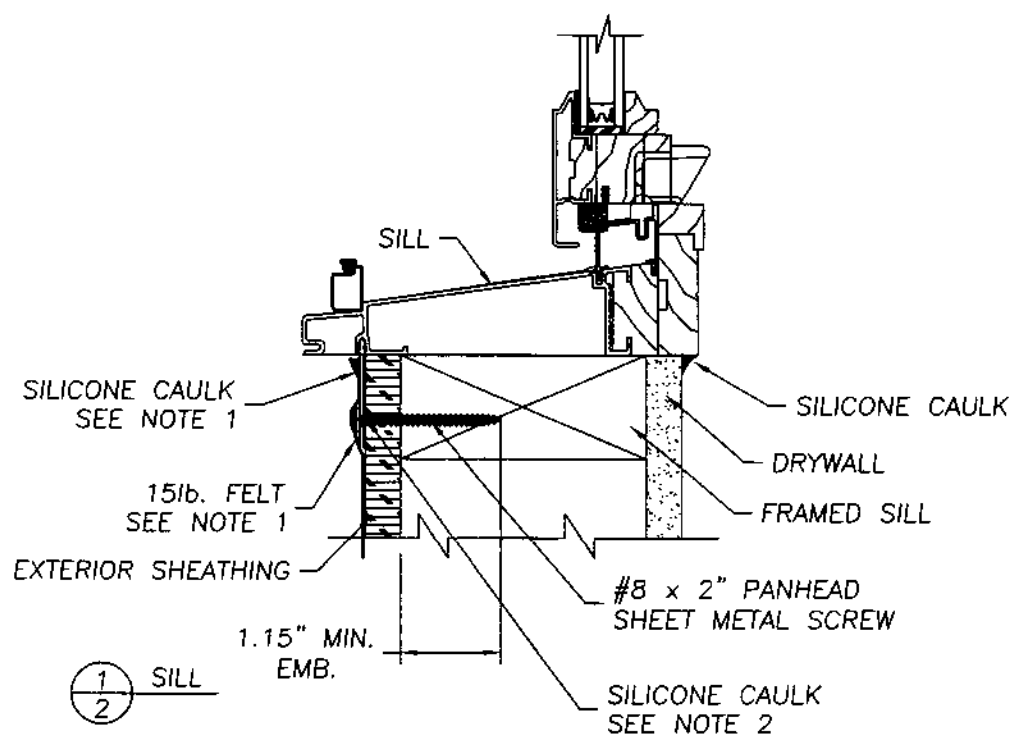
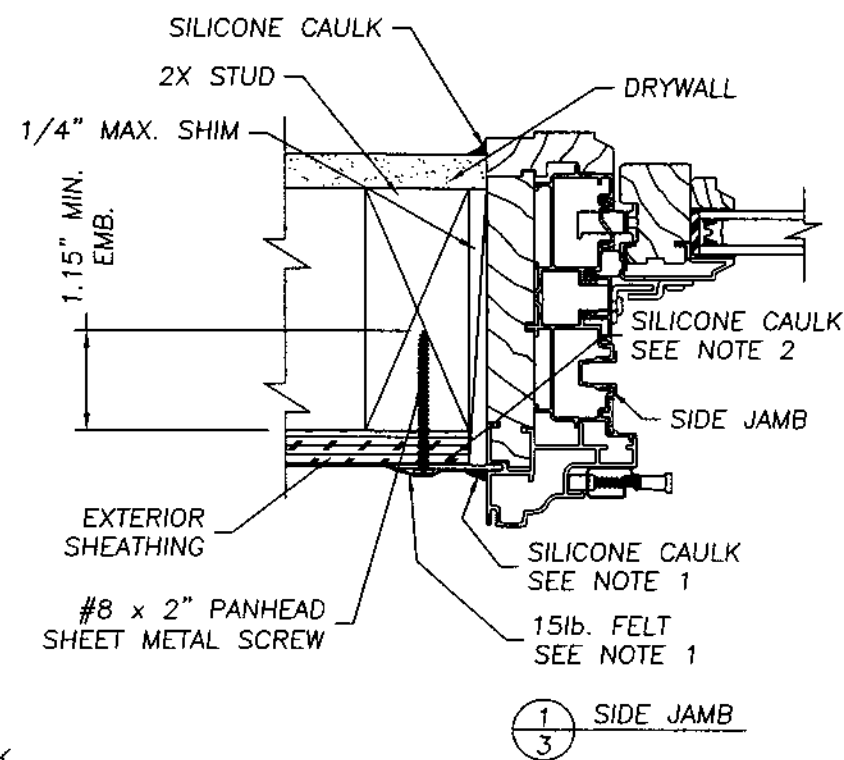
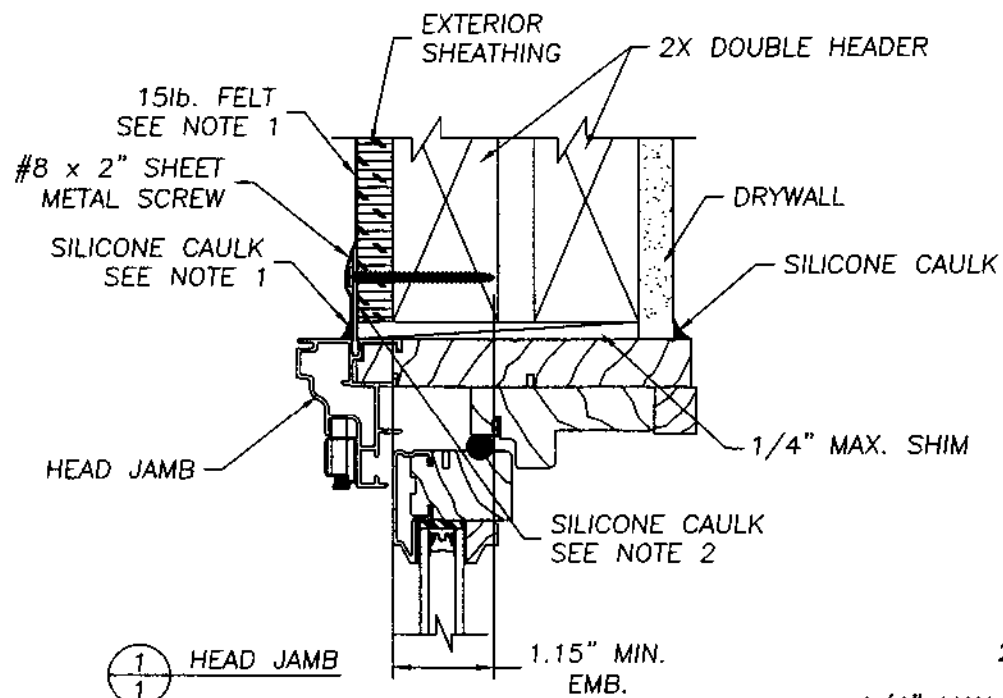
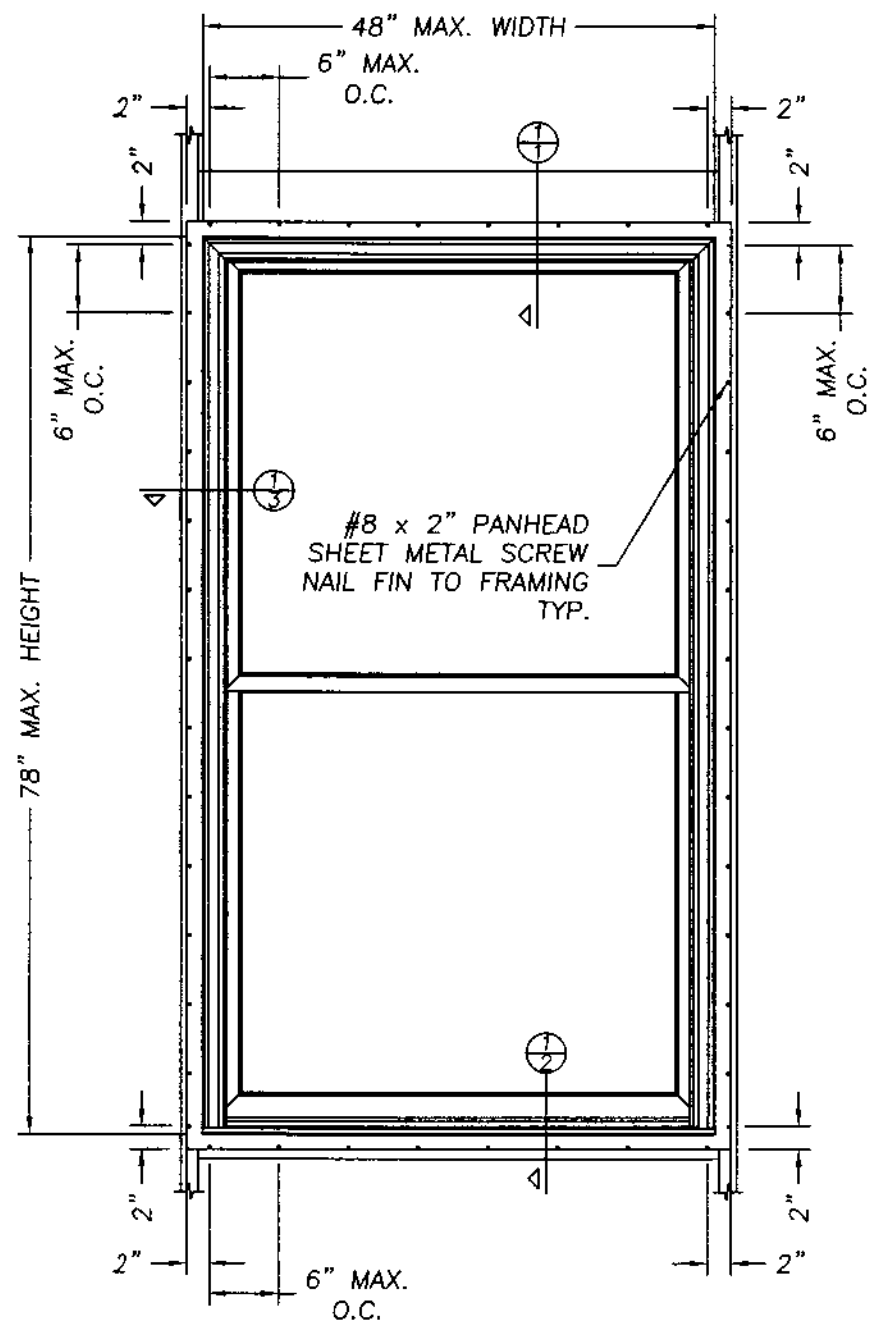
EAGLE WINDOW & DOOR, INC.
2045 KERPER BOULEVARD
DUBUQUE, IA 52004-1072
PH. 319.556.4408

PRODUCT:
EAGLE WINDOW & DOOR
ALUMINUM CLAD DOUBLE HUNG
TILT WOOD WINDOW
PART OR ASSEMBLY:
GENERAL NOTES &
TYPICAL ELEVATIONS

NO.	DATE	BY	REVISIONS

RW BUILDING
CONSULTANTS, INC.
813.659.9197

DATE: 9/23/02
SCALE: N.T.S.
DWG. BY: WLN
CHK. BY: RW
DRAWING NO.:
EGL-101-OCF
SHEET 1 OF 3



NOTE:

1. 15lbs. felt must be used as a water barrier. The felt must cover the nailing fin and anchor screw heads. All loose edges of the felt paper must be sealed with silicone caulk.
2. The full perimeter of the window nailing fin must have a heavy bead of caulk applied to the building side before the window is placed in the opening.

September 24, 2002
Lyndon F. Schmidt
Florida P. E. No. 43409
19506 French Lace Drive
Lutz, FL 33558

EAGLE WINDOW & DOOR, INC.
2045 KERPER BOULEVARD
DUBUQUE, IA 52004-1072
PH. 319.556.4408

ANCHORING CROSS SECTIONS
FOR WOOD CONSTRUCTION
DOUBLE HUNGE E-TILT SERIES
ALUMINUM CLAD WINDOW

RW BUILDING
CONSULTANTS, INC.
813.659.9197

DATE: 09/23/02

SCALE: N.T.S.

DWG. BY: WLN

CHK. BY: RW

DRAWING NO.:
EGL-101-OCF

SHEET 3 OF 3