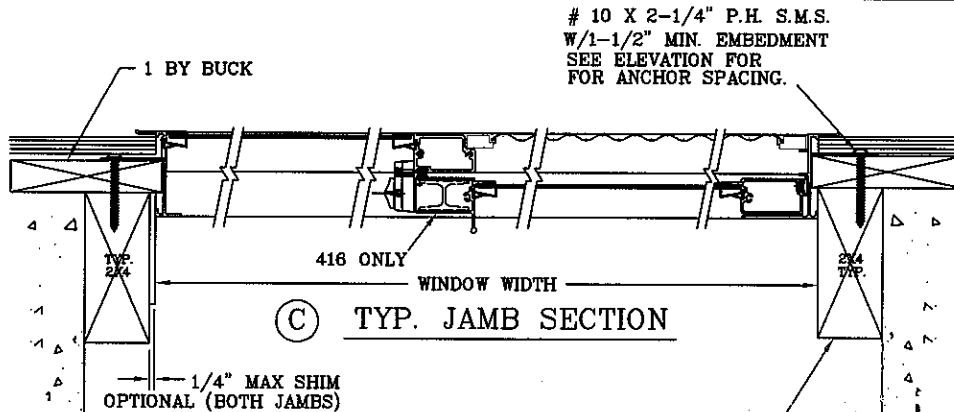


# 10 X 2-1/4" P.H. S.M.S.  
W/1-1/2" MIN. EMBEDMENT  
SEE ELEVATION FOR  
ANCHOR SPACING.

**NOTES:**

- 1) SHIMS ARE OPTIONAL, MAX SHIM STACK 1/4".
- 2) ALL ALUMINUM EXTRUSIONS ARE ALLOY 6063-T5 OR T6 WITH TYPICAL WALL THICKNESS OF 0.062".
- 3) USE HIGH QUALITY CAULK BEHIND WINDOW FIN.
- 4) GLASS THICKNESS BASED ON ASTM E 1300 GLASS CHARTS, AND MAY VARY DEPENDING ON SIZE.
- 5) THE RESPONSIBILITY FOR SELECTION OF NORANDEX PRODUCTS TO MEET ANY APPLICABLE LOCAL LAWS, BUILDING CODES, ORDINANCES OR OTHER SAFETY REQUIREMENTS REST SOLELY WITH THE ARCHITECT, BUILDING OWNER OR CONTRACTOR.
- 6) EQUAL FASTENERS AT HEAD AND SILL ARE REQUIRED.
- 7) WOOD BUCKS NOT BY NORANDEX MUST SUSTAIN IMPOSED LOADS. CONTRACTOR IS RESPONSIBLE FOR MAINTAINING STRUCTURAL INTEGRITY OF THE WINDOW OPENING AND ANY WOOD FRAMING AROUND WINDOW HEADER.



2 BY BUCK SHALL BE  
SECURELY FASTENED TO  
TRANSFER LOAD TO  
STRUCTURAL SUBSTRATE.

*W.A. Davis Jr.*  
9/3/02

W.A. DAVIS JR. P.E.  
FL. REG. ENG. # 25539  
DATE: 9/3/02

WINDOW DIMENSIONS		FASTENER SCHEDULE			
WIDTH (INCHES)	HEIGHT (INCHES)	NO. ANCHORS HEAD/SILL SEE NOTE 6		NO. ANCHORS JAMB	
		±35 (PSF)	±45 (PSF)	±35 (PSF)	±45 (PSF)
26-1/2"	26"	2	2	2	2
37"		2	2	2	2
53-1/8"		3	3	2	2
74"		3	4	2	2
26-1/2"	38-1/4"	2	2	3	3
37"		2	2	3	3
53-1/8"		3	3	3	3
74"		3	4	3	3
26-1/2"	50-5/8"	2	2	3	3
37"		2	2	3	3
53-1/8"		3	3	3	3
74"		3	4	3	3
26-1/2"	63"	2	2	3	4
37"		2	2	3	4
53-1/8"		3	3	3	4
74"		3	4	3	4

**438/416 GLIDER**  
**FOR SIDING APPLICATION**  
**INST DETAIL OX/XO AND**  
**FASTENER SCHEDULE**

**SERIES: 438/416**  
**ALUMINUM GLIDER**  
**NORANDEX**  
 4506 30th STREET WEST  
 BRADENTON, FL 34207  
 PHONE: (841) 766-1691

NO.	DATE	REVISIONS DESCRIPTION

DATE: 7/31/02  
 SCALE: N.T.S.  
 D.W.C. BY: R.A.F.  
 C.H.K. BY:

DWG. NO.: MAR-013