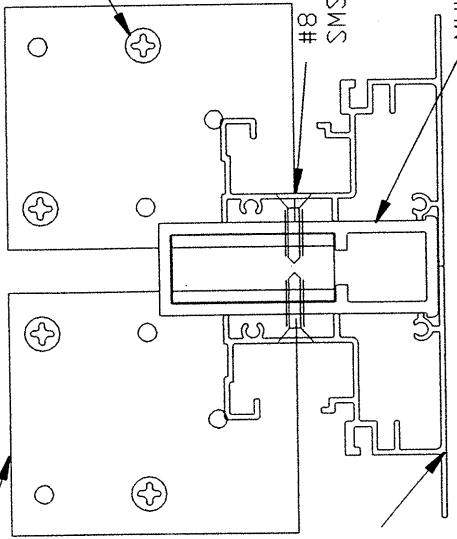


DWG NO: KJAX0064

MULLION ANCHOR BRACKET



SECTION A-A

INSTALLATION ANCHOR (TYP.)

#8 SELF TAPPING SMS (TYP.)

MULLION DIE NO. KCO-248

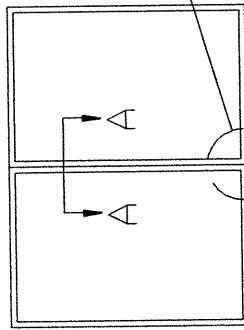
MULLION ANCHOR BRACKET

SUBSTRATE

MULLION DIE NO. KCO-248

INSTALLATION ANCHOR (TYP.)

SEE NOTES #2 & #3



DETAIL B-B

EXTERIOR ELEVATION

- NOTES:
- 1) MULLION INSTALLATION DETAILS APPLY TO ALUMINUM TUBE MULLION, DIE NO. KCO-248, WHEN USED TO MULL TW SERIES SINGLE HUNG WINDOWS SIDE BY SIDE.
  - 2) IN MASONRY CONSTRUCTION, ATTACH MULLION TO SUBSTRATE WITH FOUR (4) 3/16" DIA. CONCRETE SCREW ANCHORS OF SUFFICIENT LTH. TO ACHIEVE 1-1/4" MIN. EMBEDMENT INTO CONCRETE OR MASONRY.
  - 3) IN WOOD FRAME CONSTRUCTION, ATTACH MULLION TO SUBSTRATE USING FOUR (4) #10 SCREWS OF SUFFICIENT LTH. TO ACHIEVE 1-3/8" MIN. EMBEDMENT INTO WOOD FRAMING.
  - 4) MULLION AND ATTACHMENT ARE IN COMPLIANCE WITH THE REQUIREMENTS OF THE FLORIDA BUILDING CODE AT THE DESIGN PRESSURES SHOWN ON CHART ON BACK OF THIS SHT.

KINCO, LTD.  
JACKSONVILLE, FLORIDA

TITLE: INSTALLATION DETAIL  
TW SERIES FLANGE VERTICAL MULLION

AREA: -----	DRN: JS	APRVD: -----	DATE: 3/24/02
VT/FT: -----	SCALE: HALF	MATL: -----	DWG NO: KJAX0064

# KINCO, LTD.

## ALUMINUM MULLION, DIE #KCO-248

### TW SERIES FLANGE SINGLE HUNG WINDOW

#### COMPARATIVE CHART IN DESIGN PRESSURE - PSF

WDW. WTH. > WDW. HGT. V	19.125	26.500	37.000	53.125
26.000	467	435	435	435
38.375	267	221	200	199
50.625	187	148	124	115
63.000	144	111	89	76
72.000	123	94	74	61
76.750	109	83	65	53
84.000	82	62	48	38
96.000	54	41	31	24

CHART APPLIES ONLY TO MULLION KCO-248 WHEN USED TO MULL TW SERIES FLANGE SINGLE HUNG WINDOWS.

READ WINDOW WIDTH AND HEIGHT IN INCHES

DESIGN PRESSURE VALUES ON THIS CHART ARE IN PSF

WINDOW WIDTHS AND HEIGHTS LISTED ABOVE ARE SINGLE WINDOW SIZES

DESIGN PRESSURE VALUES APPLY TO MULLION WHERE TWO OR MORE WINDOWS ARE INSTALLED IN A SINGLE OPENING.

ATTACH MULLION TO SUBSTRATE AS FOLLOWS:

CONCRETE OR MASONRY SUBSTRATE - ATTACH EACH END OF MULLION TO STRUCTURE USING FOUR 3/16 IN. DIA. TAPCON TYPE ANCHORS OF SUFFICIENT LENGTH TO ACHIEVE 1-1/4 IN. MIN. EMBEDMENT.

WOOD FRAME SUBSTRATE - ATTACH EACH END OF MULLION TO STRUCTURE USING FOUR #10 SCREWS OF SUFFICIENT LENGTH TO ACHIEVE 1-3/8 IN. MIN. EMBEDMENT.

PREPARED BY:

**PRODUCT TECHNOLOGY CORPORATION**

250 INTERNATIONAL PARKWAY

SUITE 250

HEATHROW, FLORIDA 32746

PHONE 407 805-0365 / FAX 407 805-0366

CA010456

24-Mar-2002

01-0920