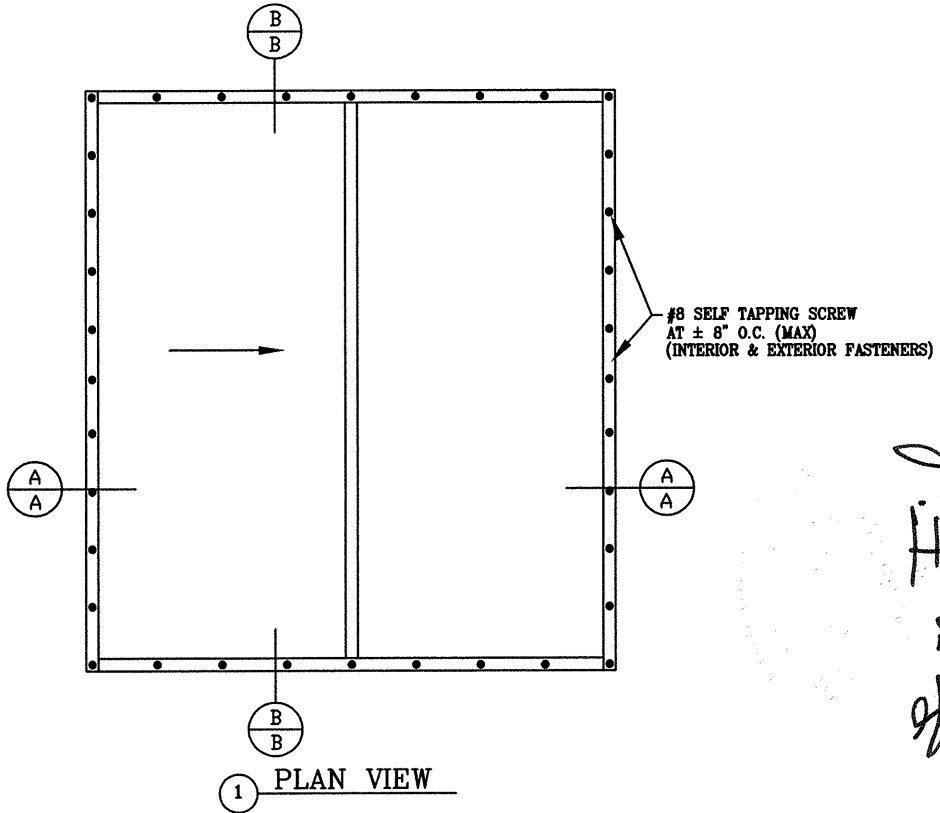
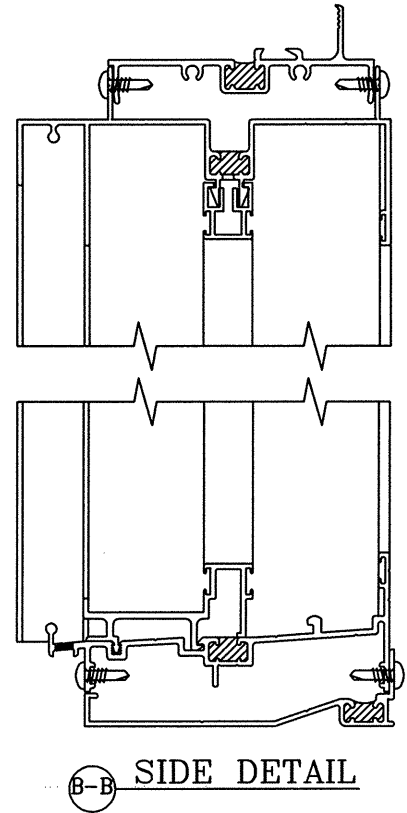
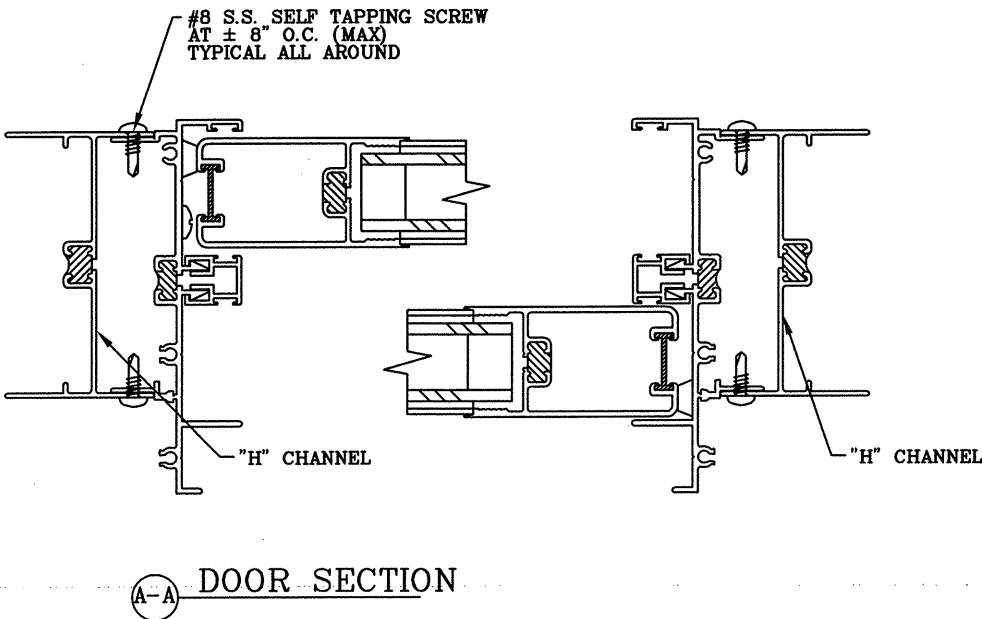


**FOUR SEASONS THERMAL DOOR  
(ALUMINUM PATIO DOOR)**



*Lawrence Fisher*  
5/2/02



STRUCTURAL TEST PRESSURE ±52.5 psf

DRAWN BY: TW

SCALE: NTS

CHECKED BY:

DWG. #:

DATE: 05-01-02

PAGE OF



**FOUR SEASONS SOLAR PRODUCTS, LLC.**

5005 VETERANS MEMORIAL HIGHWAY  
HOLBROOK, NEW YORK 11741

DESIGNERS AND MANUFACTURERS OF FOUR SEASONS SUNROOMS

REVISION

BY

REVISION	BY