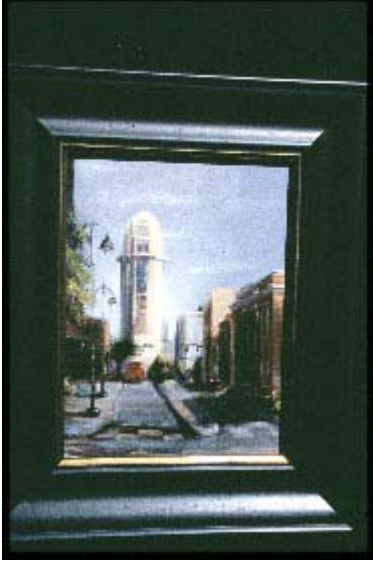


Orange County Registry of Florida Artists

Patricia McCrudden Shistle

Painting / Drawing



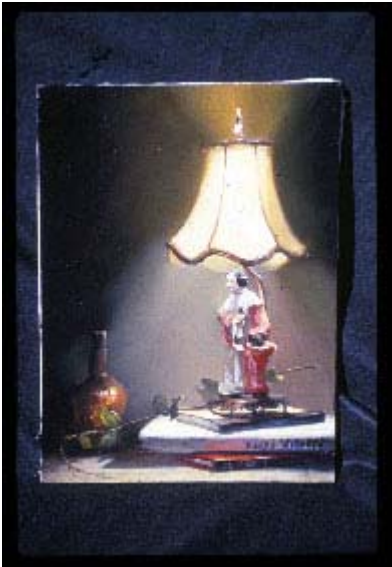
"Orange County Court House" 2001 oil
10" x 14"

Artist's Statement:

I passionately search for truth and the profound essence of each of my subjects. I paint in the luminous medium of oils, as did the masters of old, because of its versatility and permanence. The flow and movement of light, its glow and beauty are what make us stop and see beyond the mundane and into the spiritual reality that is all around us. As an artist I am inspired to create such beauty in an attempt to share my vision, one of joy and awe at the quiet beauty and bold contrast of life. My life is a constant study and refinement of both my painting and vision. To quote the master Bouguereau: "to know how to see and how to seize what one sees- there in is all the secret to the imagination."

Patricia McCrudden Shistle

1300 Palmer St.
Orlando, FL 32801
Telephone: (407) 894-5340
Email: SHISTLEORIGINALS@aol.com



"Illumination" 2001 oil 18" x 24"

ALL ORIGINAL WORKS OF ART ARE PROTECTED BY COPYRIGHT AND
MAY NOT BE REPRODUCED WITHOUT WRITTEN CONSENT OF THE
ARTIST.