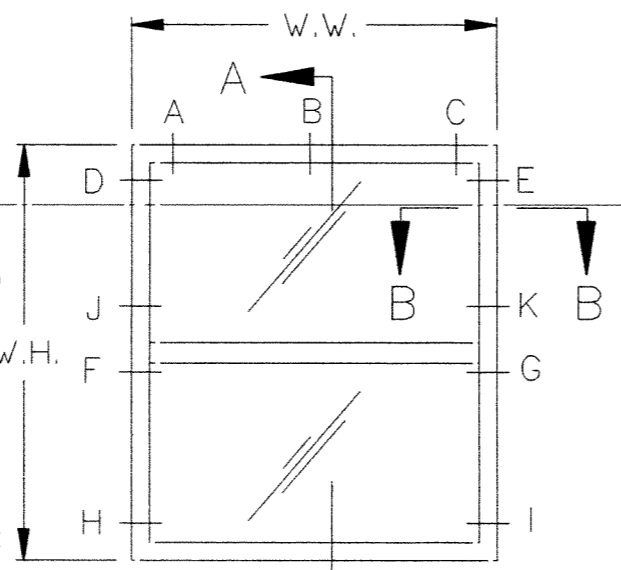


TAPCON LOCATION CHART

CALL SIZE	BUCK SIZE	LOCATIONS IN HEAD		LOCATIONS IN JAMB	
		30psf TO 40psf	41psf TO 70psf	30psf TO 40psf	41psf TO 70psf
12	18 1/8 x 25	B	B	F,G	F,G
13	18 1/8 x 37 3/8	B	B	F,G	F,G
14	18 1/8 x 49 5/8	B	B	F,G	F,G
145	18 1/8 x 55 1/4	B	B	F,G	F,G
15	18 1/8 x 62	B	B	F,G	F,G,H,I
16	18 1/8 x 71	B	B	F,G	F,G,H,I
17	18 1/8 x 83	B	B	F,G	F,G,H,I
1H2	25 1/2 x 25	B	B	F,G	F,G
1H3	25 1/2 x 37 3/8	B	B	F,G	F,G,H,I
1H4	25 1/2 x 49 5/8	B	B	F,G	F,G,H,I
1H45	25 1/2 x 55 1/4	B	B	F,G	F,G,H,I
1H5	25 1/2 x 62	B	B	F,G	F,G,H,I
1H6	25 1/2 x 71	B	B	F,G	F,G,H,I
1H7	25 1/2 x 83	B	B	F,G,J,K	F,G,J,K
30 1/2 x 26	29 1/2 x 25	B	B	F,G	F,G
30 1/2 x 38 3/8	29 1/2 x 37 3/8	B	B	F,G	F,G,H,I
30 1/2 x 50 5/8	29 1/2 x 49 5/8	B	B	F,G	F,G,H,I
30 1/2 x 56 1/4	29 1/2 x 55 1/4	B	B	F,G	F,G,H,I
30 1/2 x 63	29 1/2 x 62	B	B	F,G	F,G,H,I
30 1/2 x 72	29 1/2 x 71	B	B	F,G,H,I	F,G,H,I
30 1/2 x 84	29 1/2 x 83	B	B	F,G,J,K	F,G,J,K
22	36 x 25	B	B	F,G	F,G
23	36 x 37 3/8	B	B	F,G	F,G,H,I
24	36 x 49 5/8	B	B	F,G	F,G,H,I
245	36 x 55 1/4	B	B	F,G	F,G,H,I
25	36 x 62	B	B	F,G,H,I	F,G,H,I
26	36 x 71	B	B	F,G,H,I	D,E,F,G,H,I
27	36 x 83	B	B	F,G,J,K	F,G,H,I,J,K
42 x 26	41 x 25	B	B	F,G	F,G
42 x 38 3/8	41 x 37 3/8	B	B	F,G	F,G,H,I
42 x 50 5/8	41 x 49 5/8	B	B	F,G	F,G,H,I
42 x 56 1/4	41 x 55 1/4	B	B	F,G,H,I	F,G,H,I
42 x 63	41 x 62	B	B	F,G,H,I	D,E,F,G,H,I
42 x 72	41 x 71	B	B	F,G,H,I	D,E,F,G,H,I
42 x 84	41 x 83	B	B	F,G,J,K	F,G,H,I,J,K
48 x 26	47 x 25	B	A,C	F,G	F,G
48 x 38 3/8	47 x 37 3/8	B	A,C	F,G	F,G,H,I
48 x 50 5/8	47 x 49 5/8	B	A,C	F,G	F,G,H,I
48 x 56 1/4	47 x 55 1/4	B	A,C	F,G,H,I	F,G,H,I
48 x 63	47 x 62	B	A,C	F,G,H,I	D,E,F,G,H,I
48 x 72	47 x 71	B	A,C	F,G,H,I	D,E,F,G,H,I
48 x 84	47 x 83	B	A,C	F,G,J,K	D,E,F,G,H,I,J,K
32	52 1/8 x 25	B	A,C	F,G	F,G
33	52 1/8 x 37 3/8	B	A,C	F,G	F,G,H,I
34	52 1/8 x 49 5/8	B	A,C	F,G,H,I	F,G,H,I
345	52 1/8 x 55 1/4	B	A,C	F,G,H,I	D,E,F,G,H,I
35	52 1/8 x 62	B	A,C	F,G,H,I	D,E,F,G,H,I
36	52 1/8 x 71	B	A,C	F,G,H,I	D,E,F,G,H,I
* 37	52 1/8 x 83	B	A,C	F,G,J,K	D,E,F,G,H,I,J,K

- NOTES:**
- 1) SHIM AS REQ'D. AT EACH INSTALLATION ANCHOR. MAX. ALLOWABLE SHIM STACK TO BE 1/4".
 - 2) WINDOW FRAME MATERIAL: ALUMINUM ALLOY 6063.
 - 3) INSTALLATION ANCHOR MUST BE OF SUFFICIENT LTH. TO ACHIEVE MIN. EMBEDMENT OF 1-1/4" INTO MASONRY OR CONCRETE.
 - 4) USE SILICONIZED ACRYLIC CAULK BEHIND WINDOW FLANGE AT HEAD & JAMBS. SILL MUST BE ATTACHED TO THE SUBSTRATE WITH VULKEM 116 ADHESIVE CAULK OR APPROVED EQUAL.
 - 5) USE SILICONIZED ACRYLIC CAULK FOR PERIMETER SEAL AROUND EXTERIOR OF WINDOW FLANGE.
 - 6) IF EXACT WINDOW SIZE IS NOT LISTED IN ANCHOR CHART, USE ANCHOR QUANTITY LISTED WITH NEXT LARGER SIZE, FOR THE APPROPRIATE DESIGN PRESSURE REQ'D.
 - 7) GLASS THICKNESS MAY VARY PER THE REQUIREMENTS OF ASTM E1300 GLASS CHARTS.
 - 8) LETTER DESIGNATIONS ON THE TAPCON LOCATION CHART INDICATE WHERE TAPCON ANCHORS ARE TO BE INSTALLED WHEN USING THE EXTERIOR ELEVATION AS A KEY.
 - 9) ALL FACTORY APPLIED HOLES NOT DESIGNATED FOR TAPCON ANCHOR SHOULD BE FILLED WITH #8 SCREWS OF SUFFICIENT LTH. TO PROVIDE MIN. 5/8 IN. EMBEDMENT INTO WOOD BUCK.
 - 10) FLORIDA EXTRUDERS 1000 SERIES SINGLE HUNG IS SHOWN. THIS PRINT ALSO APPLIES TO THE FLORIDA EXTRUDERS 1500 AND 2000 SERIES SINGLE HUNGS.
 - 11) WHERE WINDOW IS INSTALLED IN MASONRY OPENING WITH A STRUCTURAL TWO BY WOOD BUCK, USE #10 SCREWS OF SUFFICIENT LENGTH TO ACHIEVE 1-3/8" MIN. EMBEDMENT AT ALL INSTALLATION FASTENER LOCATIONS.



ELEVATION
VIEWED FROM EXTERIOR

[Signature]
FEB 21 2002

* 37 SIZE NOT AVAILABLE IN 1000 OR 1500 SERIES.

FLORIDA EXTRUDERS INTERNATIONAL, INC.
SANFORD, FLORIDA

TITLE: INSTALLATION DETAIL
 SGL. HUNG FLANGE WINDOWS - SERIES 1000, 1500 & 2000
 DRAWN BY: BB APPROVED BY:
 DATE: 10/09/01 SCALE: NTS DWG.: FLEX0016

