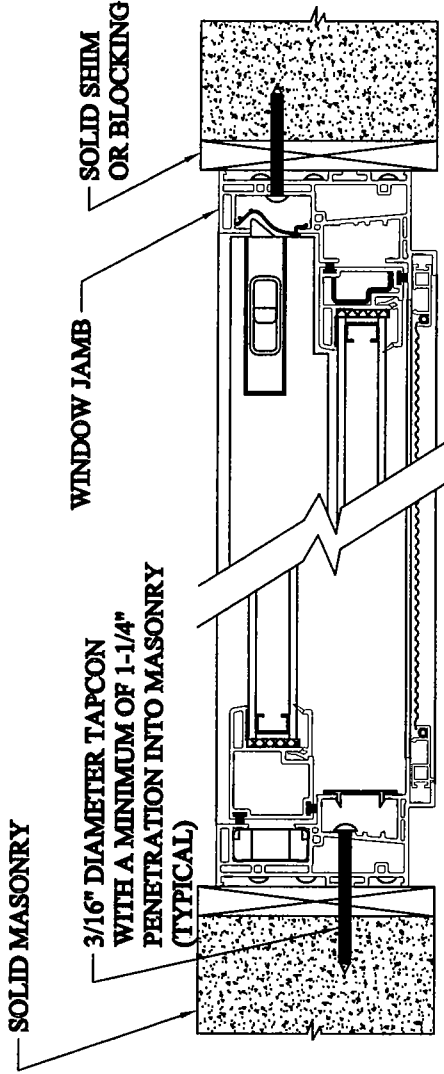
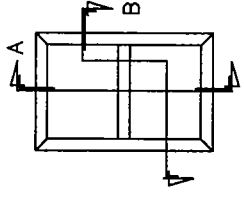


REV	DATE	DESCRIPTION	BY



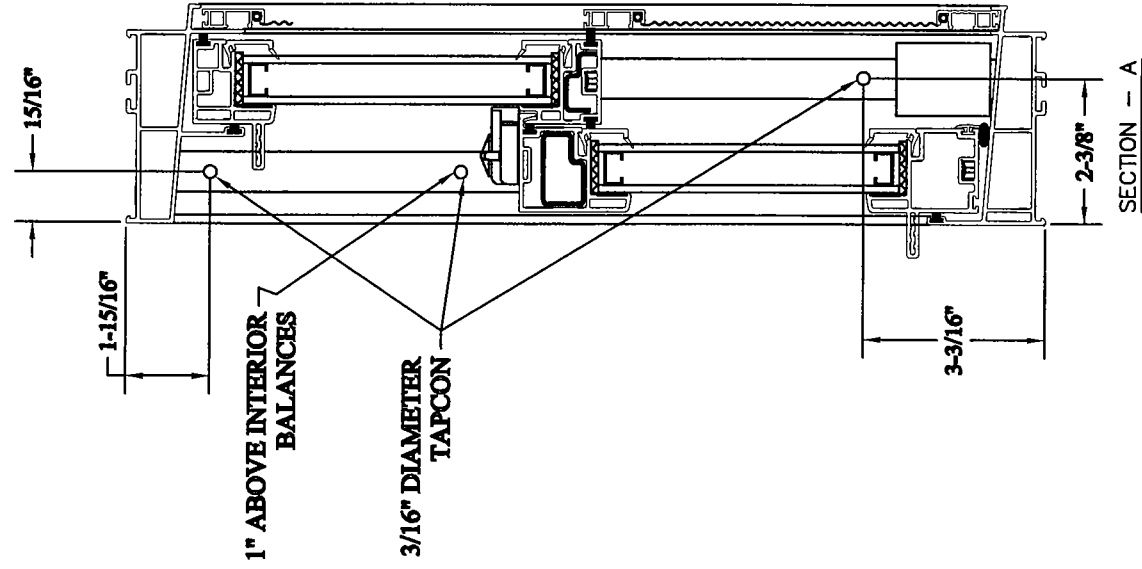
SECTION - B

ATI Test Report #	Model 0401 Double Hung Window Size	Allowable Design Wind Pressure (D.P.)
05-30311.02	48" x 78"	+/- 25.0 psf
05-30311.02	44" x 77"	+/- 30.0 psf
05-30311.02	44" x 60"	+/- 40.0 psf
05-30311.02	36" x 72"	+/- 35.0 psf
05-30311.02	36" x 60"	+ 55.0 & - 60.0 psf



EXTERIOR ELEVATION

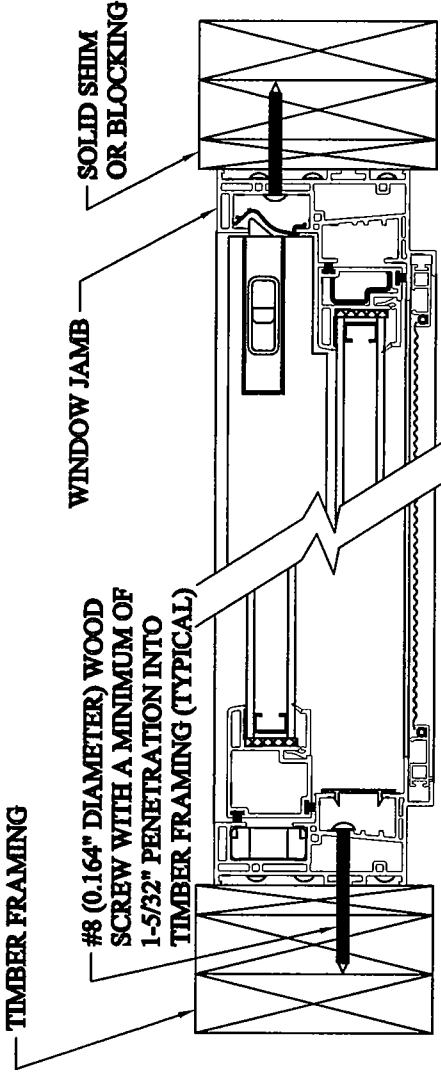
NOTE: THE FASTENERS SHOWN IN SECTIONS A AND B (6 TOTAL PER WINDOW) ARE CAPABLE OF WITHSTANDING THE WIND PRESSURES IN THE TABLE WITH APPROPRIATE FACTORS OF SAFETY.



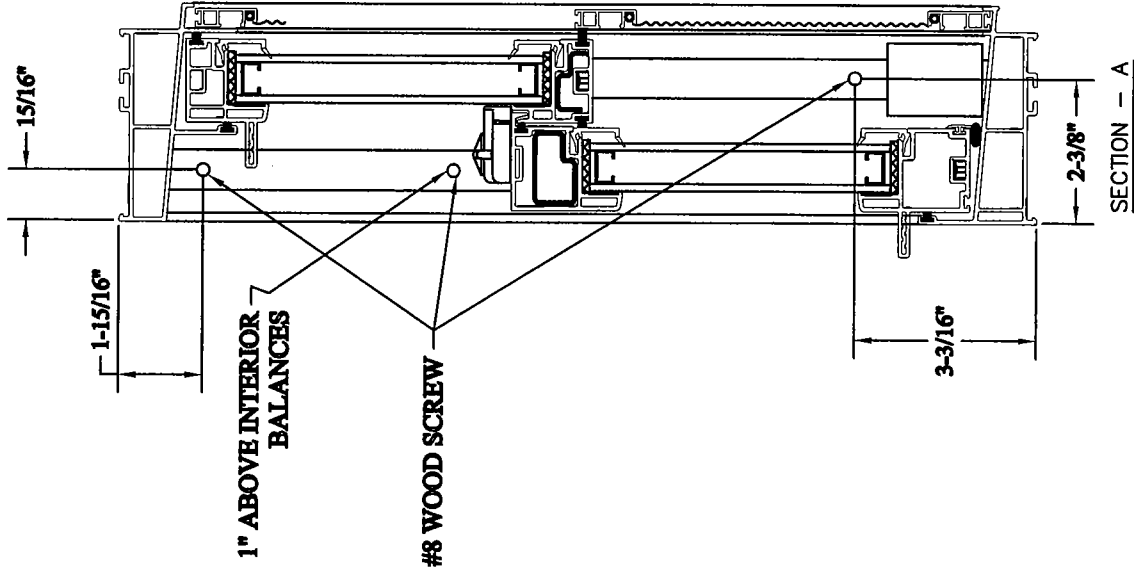
SECTION - A

PROJECT NO. 01-41462.02 115-34	PROJECT NAME: MODEL 0401 WINDOW INSTALLATION CLIENT: ALSIDE WINDOW COMPANY		DRAWING MASONRY WALL INSTALLATION FASTENERS	DWG. BY: JAH DATE: 12/23/02 SHEET 1 OF 1
--------------------------------------	---	--	--	--

Allen M. Reum
23 DECEMBER 2002

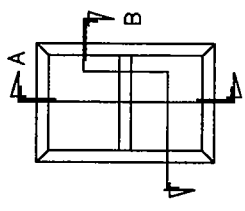


SECTION - B



SECTION - A

ATI Test Report #	Model 0401 Double Hung Window Size	Allowable Design Wind Pressure (D.P.)
05-30311.02	48" x 78"	+/- 25.0 psf
05-30311.02	44" x 77"	+/- 30.0 psf
05-30311.02	44" x 60"	+/- 40.0 psf
05-30311.02	36" x 72"	+/- 35.0 psf
05-30311.02	36" x 60"	+ 55.0 & - 60.0 psf



EXTERIOR ELEVATION

NOTE: THE FASTENERS SHOWN IN SECTIONS A AND B (6 TOTAL PER WINDOW) ARE CAPABLE OF WITHSTANDING THE WIND PRESSURES IN THE TABLE WITH APPROPRIATE FACTORS OF SAFETY.

Allen D. Rivers
23 DECEMBER 2002