

# West Orange County by the Numbers

	West Orange	Orange County	West Orange as % of County	Florida	United States
<b>Population:</b>					
Population 2000	200,739	896,344	22%	15,982,378	281,421,906
Population 2010	264,506	1,118,349	24%	18,917,612	311,212,863
Population 2015	280,673	1,172,473	24%	19,720,776	323,209,391
Average Annual Percent Increase 2000-2010	3.2%	2.5%		1.8%	1.1%
Average Annual Percent Increase 2010-2015	1.2%	1.0%		0.8%	0.8%
<b>Income 2010:</b>					
Median Household Income	\$62,255	\$53,545	116%	\$49,910	\$54,442
Average Household Income	\$82,578	\$67,530	122%	\$64,516	\$70,173
Per Capital Income	\$28,758	\$25,257	114%	\$25,768	\$26,739
Median Household Disposable Income (after taxes)	\$50,754	\$43,255	117%	\$40,123	\$43,033
Average Household Disposable Income (after taxes)	\$68,021	\$56,382	121%	\$54,113	\$56,638
<b>Businesses &amp; Jobs 2010:</b>					
Total Number of Businesses (including Gov and Educ.)	10,001	50,408	20%		
Total Number of Jobs (located within the area)	129,205	652,507	20%		
<b>Occupations of People Living within the Area 2010:</b>					
Total Employed Population 16+	120,582	513,577			
White Collar (mgt, professional, sales, administrative)	63.2%	62.2%			
Services	18.6%	20.6%			
Blue Collar (farm., const., install/repair, prod., transp.)	18.2%	17.2%			
<b>Jobs Located within the Area (NAICS Codes):</b>					
Total Jobs Located within Area	129,205	652,507			
Agriculture, Forestry, Fishing, Hunting, Mining	0.4%	0.1%			
Utilities	0.1%	0.2%			
Construction	6.1%	5.3%			
Manufacturing	3.4%	4.1%			
Wholesale Trade	4.6%	4.4%			
Retail Trade	9.7%	11.0%			
Transportation & Warehousing	1.4%	3.8%			
Information (includes software, telecom, publishing)	0.7%	2.7%			
Finance & Insurance	1.1%	3.2%			
Real Estate, Rental & Leasing	2.7%	3.3%			
Professional, Scientific & Tech Services	2.4%	7.5%			
Management of Companies & Enterprises	0.0%	0.2%			
Administrative & Support & Waste Mgt/Remediation	2.9%	4.6%			
Educational Services	6.7%	6.9%			
Health Care & Social Assistance	6.6%	11.6%			
Arts, Entertainment & Recreation	10.3%	3.7%			
Accommodation & Food Services	33.1%	17.2%			
Other Services	3.5%	4.7%			
Public Administration	3.4%	4.5%			
Unclassified Establishments	0.7%	0.9%			
<b>Average Travel Time to Work 2000 (minutes)</b>	28.0	26.6			
<b>At least high school graduate 2010 (population 25+)</b>	86.5%	86.9%			
<b>Unemployment Rate 2010</b>	10.8%	12.5%			

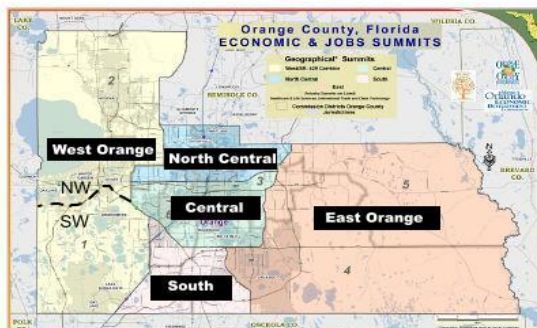
**Note:** People in the area may work outside the area. People may travel from outside the area to jobs in the area.

### Northwest Orange County (map on other side)

Rock Springs Run State Reserve  
 Wekiwa State Park  
 Lake Apopka  
 Apopka  
 Zellwood, Tangerine, Plymouth  
 Winter Garden, Oakland, Ocoee, Clarcona  
 Part of Pine Hills  
 Apopka Senior High School  
 West Orange High School  
 Killarney, Tildenville

### Southwest Orange County (map on other side)

Orange County National Golf Course  
 Lake Butler  
 Gotha  
 Walt Disney World  
 Magic Kingdom  
 Disney Animal Kingdom  
 Disney Resorts  
 Epcot Center  
 Windermere, Isleworth  
 Lake Buena Vista  
 Doctor Phillips area  
 Dr Phillips High School  
 Bay Hill



### West Orange County Area:

Northern Border: Lake County Line  
 Southern Border: Osceola County Line  
 Western Border: Lake County line.

Eastern Border Going North to South: Seminole County Line, down Pine Hills Rd, west on Silver Star Rd, south on Good Holmes Rd and Turnpike, south on Turkey Lake Rd to I-4 and Osceola County line.

Prepared by  
**Orange County Office of  
 Economic, Trade & Tourism**



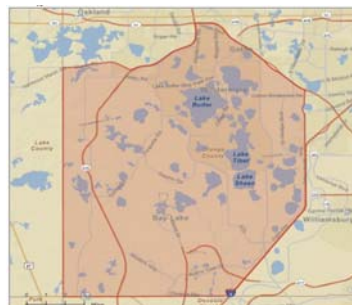
# Northwest & Southwest Orange County by the Numbers

	Northwest Orange County		Southwest Orange County		Orange County
	Number	% of County	Number	% of County	
<b>Population:</b>					
Population 2000	151,579	16.9%	48,997	5.5%	896,344
Population 2010	184,761	16.5%	79,549	7.1%	1,118,349
Population 2015	192,132	16.4%	88,345	7.5%	1,172,473
Average Annual Percent Increase 2000-2010	2.2%		6.2%		2.5%
Average Annual Percent Increase 2010-2015	0.8%		2.2%		1.0%
<b>Income 2010:</b>					
Median Household Income	\$54,839	102%	\$87,491	163%	\$53,545
Average Household Income	\$66,082	98%	\$121,070	179%	\$67,530
Per Capital Income	\$23,009	91%	\$42,113	167%	\$25,257
Median Household Disposable Income (after taxes)	\$44,246	102%	\$70,446	163%	\$43,255
Average Household Disposable Income (after taxes)	\$55,456	98%	\$97,360	173%	\$56,382
<b>Businesses &amp; Jobs 2010:</b>					
Total Number of Businesses (including Gov. and Educ.)	6,686	13.3%	3,314	6.6%	50,408
Total Number of Jobs (located within the area)	60,092	9.2%	68,992	10.6%	652,507
<b>Occupations of People Living within the Area 2010:</b>					
Total Employed Population 16+	82,802	16.1%	37,673	7.3%	513,577
White Collar (mgt, professional, sales, administrative)	57.8%		75.1%		62.2%
Services	19.7%		16.2%		20.6%
Blue Collar (farm., const., install/repair, prod., transp.)	22.5%		8.7%		17.2%
<b>Jobs Located within the Area (NAICS Codes):</b>					
Total Jobs Located within Area	60,092	9.2%	68,992	10.6%	652,507
Agriculture, Forestry, Fishing, Hunting, Mining	0.8%		0.1%		0.1%
Utilities	0.1%		0.1%		0.2%
Construction	10.1%		2.7%		5.3%
Manufacturing	7.3%		0.1%		4.1%
Wholesale Trade	9.0%		0.8%		4.4%
Retail Trade	16.3%		4.0%		11.0%
Transportation & Warehousing	2.6%		0.4%		3.8%
Information (includes software, telecom, publishing)	0.7%		0.8%		2.7%
Finance & Insurance	1.5%		0.8%		3.2%
Real Estate, Rental & Leasing	2.5%		3.0%		3.3%
Professional, Scientific & Tech Services	3.5%		1.4%		7.5%
Management of Companies & Enterprises	0.0%		0.0%		0.2%
Administrative & Support & Waste Mgt/Remediation	4.2%		1.8%		4.6%
Educational Services	10.6%		3.3%		6.9%
Health Care & Social Assistance	9.6%		4.1%		11.6%
Arts, Entertainment & Recreation	1.4%		18.1%		3.7%
Accommodation & Food Services	9.3%		53.6%		17.2%
Other Services	4.9%		2.2%		4.7%
Public Administration	5.5%		1.6%		4.5%
Unclassified Establishments	0.3%		1.1%		0.9%
<b>Average Travel Time to Work Year 2000 (minutes)</b>					
	29.0		24.8		26.6
<b>At least high school graduate 2010 (population 25+)</b>					
	82.9%		94.5%		86.9%
<b>Unemployment Rate 2010</b>					
	12.0%		9.5%		12.5%



### Northwest Orange County

Southern Border going from east to west: Florida Turnpike, 429, Marsh Road.



### Southwest Orange County

Northern Border going from east to west: Florida Turnpike, 429, Marsh Road.